



CFE PRODUCTS

MODEL : JK-DKS-W & JK-DKK-W

JK WRANGLER RADIO INSTALL KIT for SYSTEM WITH FACTORY SUB WOOFER 2007 & UP

SPECIAL NOTE

While the installation instructions below show a **Sony Radio**, the installation procedure is still the same for a **Kenwood Radio**.

Radio Prep

1. Remove the Sleeve from the New Radio as shown in picture #1. This can be done by using the removal tool that come with the Radio. Additional Sleeve removal instructions are available with the Radio Instructions.

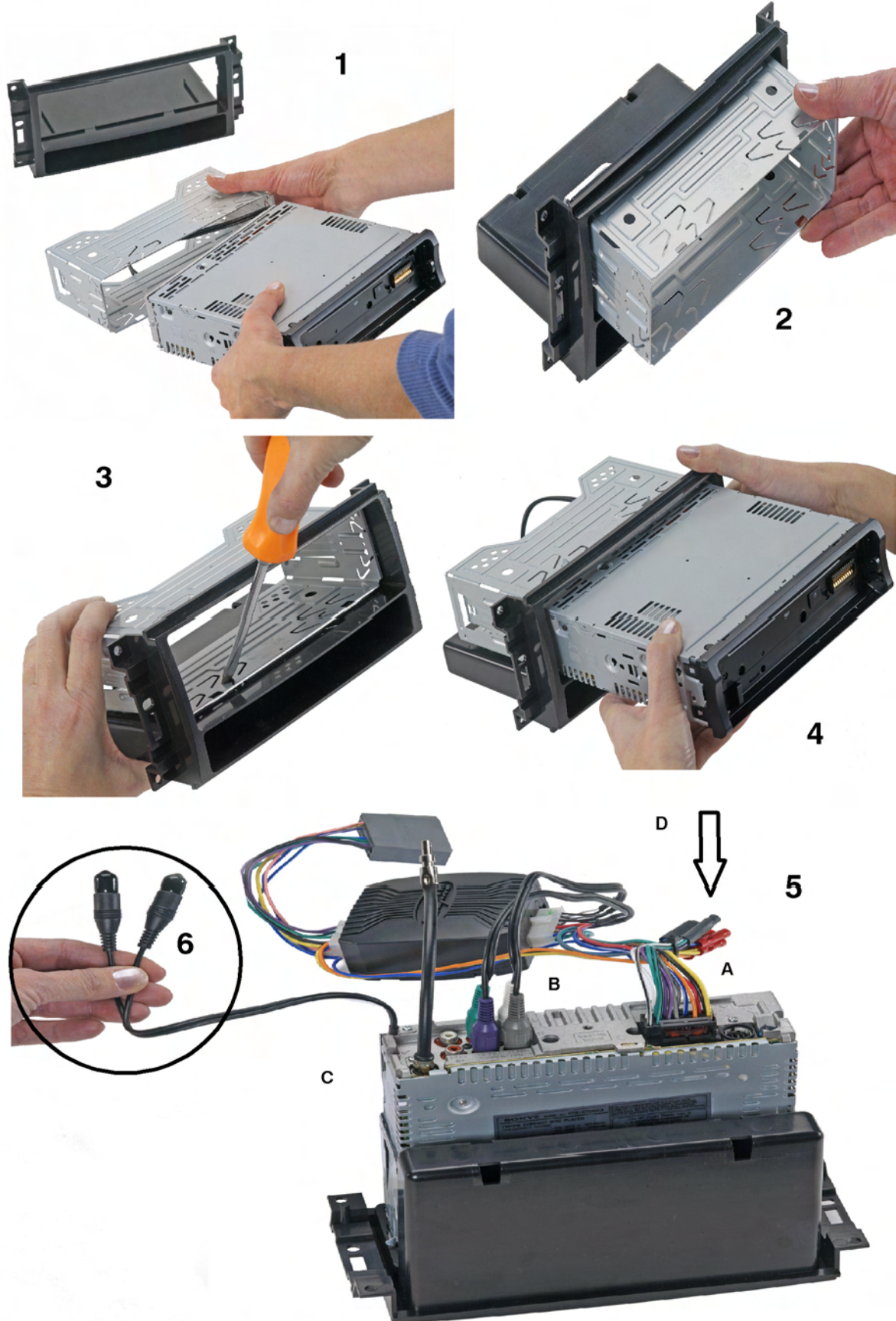
2. Install the Sleeve into the Dash Kit and using a flat screwdriver bend at least 4 of the tabs on the Sleeve to secure the Radio to the Dash Kit as shown in pictures 2 & 3.

3. Slide the Radio into the Dash Kit as shown in picture #4. Do Not Install the Face of the Radio until the installation is complete.

4. This step is **EXTREMELY IMPORTANT**. Attach the Wiring Harness to the Radio in the following order as shown in picture #5:

- A. Attach the Sony Plug into the Radio.
- B. Install color-coded RCA Plugs:
 - White RCA goes to the left front RCA output of the radio.
 - Gray RCA goes to the right front RCA output of the radio.
 - Green RCA goes to the left rear RCA output of the radio
 - Purple RCA goes to the right rear RCA output of the radio.
- C. Attach Antenna Adaptor to Radio.

5. Some Radios have separate RCA Sub Woofer Output Leads as shown in picture #6. These Leads will not be needed to run your Factory Installed Sub Woofer. They will only be used if you decide to add an after market Sub Woofer at a later date. Picture D shows the Blue Connector which is the Remote Turn On Lead from the Radio. This connection will only be used if you decide to add an After Market Sub Woofer.





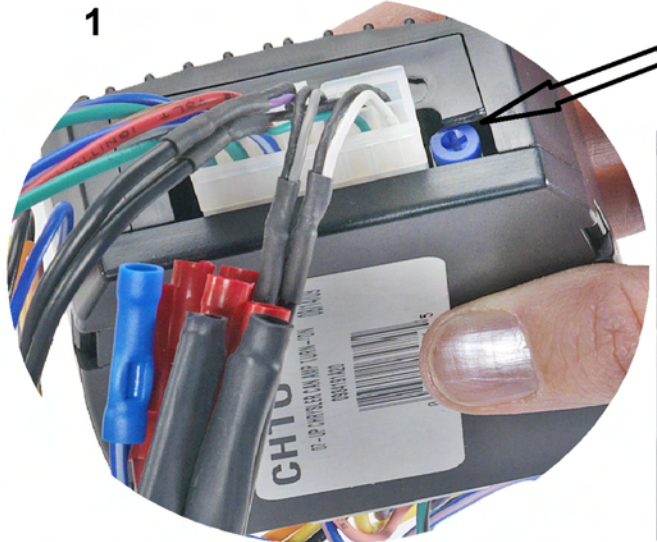
CFE PRODUCTS

MODEL : JK-DKS-W & JK-DKK-W

JK WRANGLER RADIO INSTALL KIT for SYSTEM WITH FACTORY SUB WOOFER 2007 & UP

Radio Installation

1. The Digital Level Control is shown in picture #1. It is located on the side of Adapter Box on the Wiring Harness. This control is pre-set and is adjusted fully clockwise. For most installations no adjustment will be needed. Possible adjustments will be discussed later in the instructions.



Digital Level Control

2. Carefully Lift up Dash Trim Cover using a small flat edge tool. (Do not pull away from the Dash. A wire will stay connected under the Cover) Lift up the back of the Dash Trim as shown in picture #2. Pull forward and rest the Cover as shown in picture #3.



3. Remove the Upper Two Screws on the Dash Panel as shown in picture #4.



4. Using a flat edge tool, remove the Lower Trim Panel as shown in picture #5.



5. Remove the two Lower Screws on the Dash Panel as shown in picture #6.



Go to Page 3 and skip the Special Note Below at this time.

Special Note

If the Audio Signal is distorted, remove Radio from Dash and locate the the Digital Level Control as shown in picture #1. With the Radio turned off, turn the control 1/4 turn COUNTERCLOCKWISE. Then turn the radio back on and listen to the sound. If it is not distorted finish the install and reassemble the Dash. If it is still distorted, repeat the above turning 1/8 turn at a time until the distortion clears up.



CFE PRODUCTS

MODEL : JK-DKS-W & JK-DKK-W

JK WRANGLER RADIO INSTALL KIT for SYSTEM WITH
FACTORY SUB WOOFER 2007 & UP

Radio Installation Continued



6. Starting at the top and working your way down, pull the Dash Panel forward releasing the clips that hold it in place. (The Panel will not be removed and the wires will not be disconnected) as shown in picture #7. Pull the Panel back far enough to remove the Factory Radio.
7. Using a 7mm socket remove the 4 screws and slide the Factory Radio out as shown in picture #8.
8. Remove the Factory Antenna Connector(s). You will only have the Yellow Connector if you have Factory Satellite Radio. Squeeze the side of the plug to release the Plug and remove as shown in picture #9. Repeat the same procedure for the White Plug (am/fm antenna).
9. Remove the Gray Factory Radio Plug by Squeezing the bottom to release the Plug as shown in picture #10.



CFE PRODUCTS

MODEL : JK-DKS-W & JK-DKK-W

JK WRANGLER RADIO INSTALL KIT for SYSTEM WITH
FACTORY SUB WOOFER 2007 & UP

Radio Installation Continued

10. Rest the New Radio/Dash Kit on the heater vents between the Dash and the Dash Trim Panel.
11. Plug the Gray 22 Pin Connector to the Jeeps corresponding Wiring Harness as shown in picture #11.
12. Tuck the Digital Adaptor Box into the Left Corner of the Dash cavity as shown in picture #12. This will allow room for the New Radio to slide into the Dash.
13. Slide New Radio into the Dash making sure that all Antenna Cables are accessible on top of the Radio as shown in picture #13. Partially install one of the screws to hold Radio in place
14. Connect the White Antenna Plug into the Black Antenna Cable coming from the New Radio as shown in picture #14. If you also have a Yellow Connector it will not be used.
15. Carefully tuck the Antenna Wires back into the Dash as shown in picture #15.
16. Before going any further, test the New Radio.
 - A. Install Radio Faceplate.
 - B. Turn on ignition key and verify that the Radio lights up.
 - C. Turn Radio on and tune in a station.
 - D. Adjust the volume up and down and check Radio for proper operation.
 - E. If the Radio operates properly and there is no distortion, install the remaining 3 screws for the Radio and reinstall the Dash. **However**, if the Audio Signal is distorted, refer back to the Special Note on page 2 of the Instructions.

