



CFE PRODUCTS

MODEL : JK-DKNAV-B (BASIC SYSTEM)

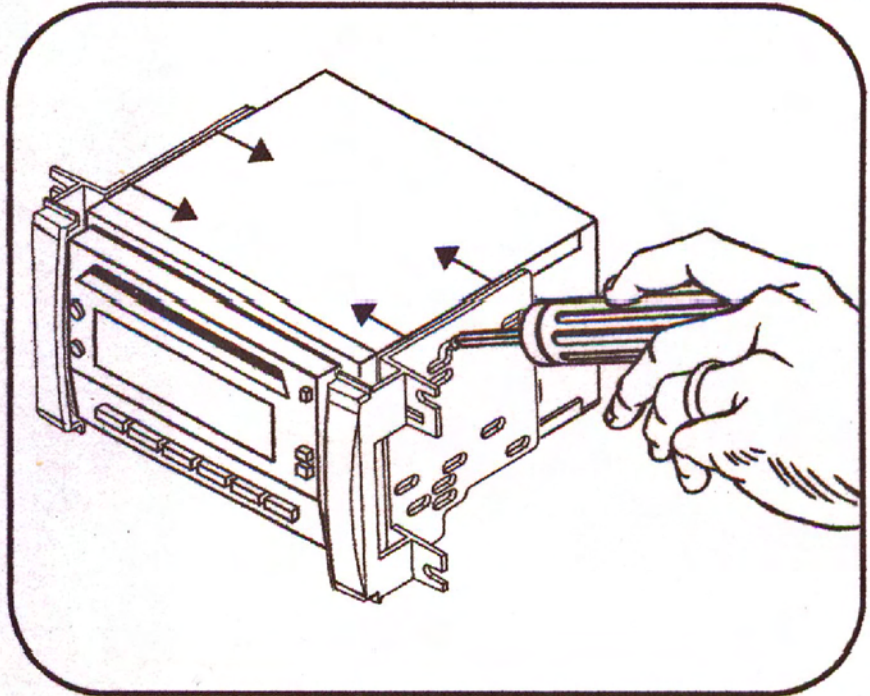
JK WRANGLER RADIO INSTALL KIT for SYSTEM WITHOUT FACTORY
SUB WOOFER 2007 & UP

Radio Prep

Special Note - While this installation kit is mostly plug & play, we strongly advise that you thoroughly read the instructions that came with your new radio before proceeding.

There are some wires that do not connect to the factory harness. These are the long Green Wire labeled "PKR SW" and the long Purple Wire with White Stripe labeled "REVERSE." These need to be connected in accordance with your radio instructions.

1



1. Attach the Double DIN Brackets/ Trim Plates to the side of the Double DIN Radio using the Screws supplied with the Radio as shown in picture #1.

While picture # 2 below is not the exact radio that you are installing, the procedure is the same.

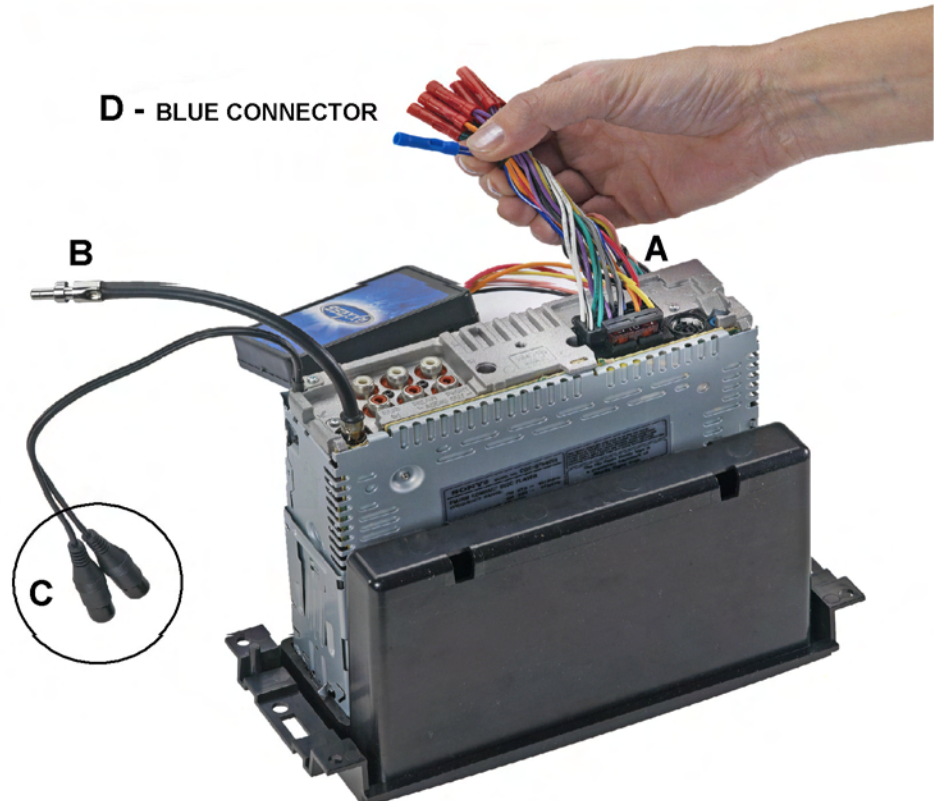
2. Plug the Adaptor Harness into the New Radio as shown in picture # 2 A.

3. Attach Antenna Adaptor to Radio as shown in picture #2 B.

4. Some Radios have separate RCA Sub Woofer Output Leads as shown in picture #2 C. These Leads will not be needed. They will only be used if you decide to add an after market Sub Woofer at a later date. Picture 2-D shows the Blue Connector, which is labeled "P.CONT." This is the Remote Turn On Lead from the Radio. This connection will only be used if you decide to add an After Market Sub Woofer.

2

D - BLUE CONNECTOR





CFE PRODUCTS

MODEL : JK-DKNAV-B

JK WRANGLER RADIO INSTALL KIT for SYSTEM WITH
FACTORY SUB WOOFER 2007 & UP

Radio Installation

1. Carefully Lift up Dash Trim Cover using a small flat edge tool. (Do not pull away from the Dash. A wire will stay connected under the Cover) Lift up the back of the Dash Trim as shown in picture #1. Pull forward and rest the Cover as shown in picture #2.
2. Remove the Upper Two Screws on the Dash Panel as shown in picture #3.
3. Using a flat edge tool, remove the Lower Trim Panel as shown in picture #4.
4. Remove the two Lower Screws on the Dash Panel as shown in picture #5.





CFE PRODUCTS

MODEL : JK-DKNAV-B

JK WRANGLER RADIO INSTALL KIT for SYSTEM WITH
FACTORY SUB WOOFER 2007 & UP

Radio Installation Continued



5. Starting at the top and working your way down, pull the Dash Panel forward releasing the clips that hold it in place. (The Panel will not be removed and the wires will not be disconnected) as shown in picture #6. Pull the Panel back far enough to remove the Factory Radio.

6. Using a 7mm socket remove the 4 screws and slide the Factory Radio out as shown in picture #7.

7. Remove the Factory Antenna Connector(s). You will only have the Yellow Connector if you have Factory Satellite Radio. Squeeze the side of the plug to release the Plug and remove as shown in picture #8. Repeat the same procedure for the White Plug (am/fm antenna).

8. Remove the Gray Factory Radio Plug by Squeezing the bottom to release the Plug as shown in picture #9.



CFE PRODUCTS

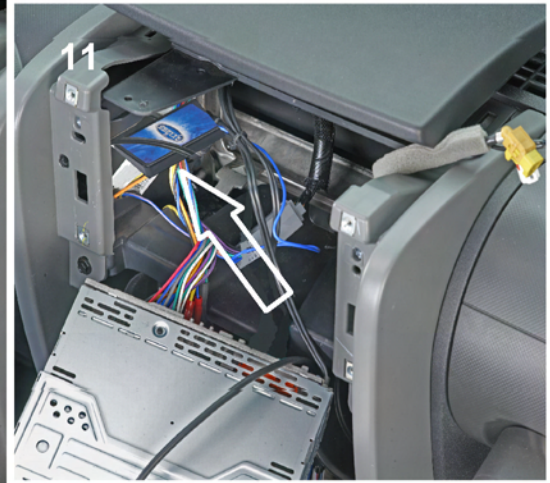
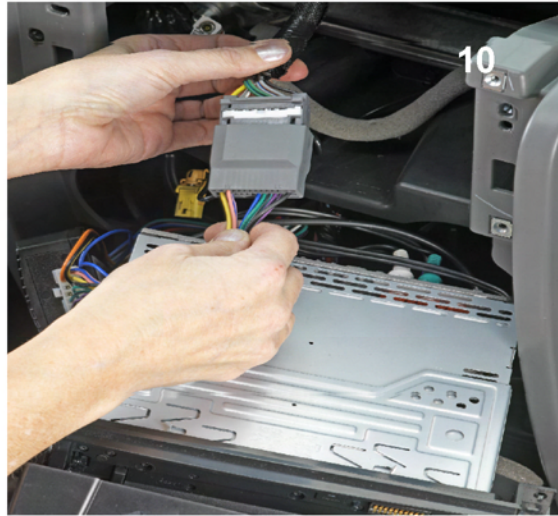
MODEL : JK-DKNAV-B

JK WRANGLER RADIO INSTALL KIT for SYSTEM WITH
FACTORY SUB WOOFER 2007 & UP

Radio Installation Continued

NOTE: The top of the metal bracket in the sub dash may need to be cut to allow for the clearance of the Double DIN Radio's chassis.

(While the Radio in the picture may not look like the Radio you are installing, the procedure is the same.)

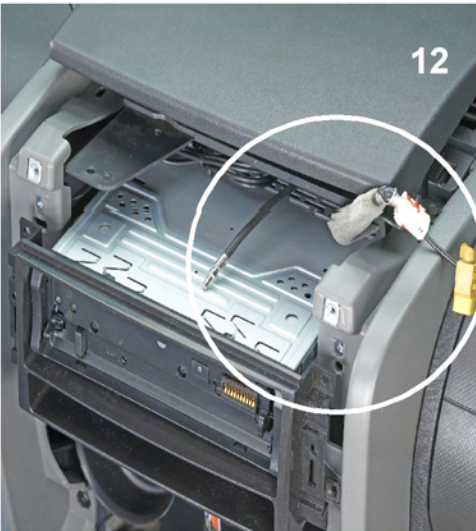


9. Rest the New Radio/Dash Kit on the heater vents between the Dash and the Dash Trim Panel.

10. Plug the Gray 22 Pin Connector to the Jeeps corresponding Wiring Harness as shown in picture #10.

11. Tuck the Digital Adaptor Box into the Left Corner of the Dash cavity as shown in picture #11. This will allow room for the New Radio to slide into the Dash.

12. Slide New Radio into the Dash making sure that all Antenna Cables are accessible on top of the Radio as shown in picture #12. Partially install one of the screws to hold Radio in place

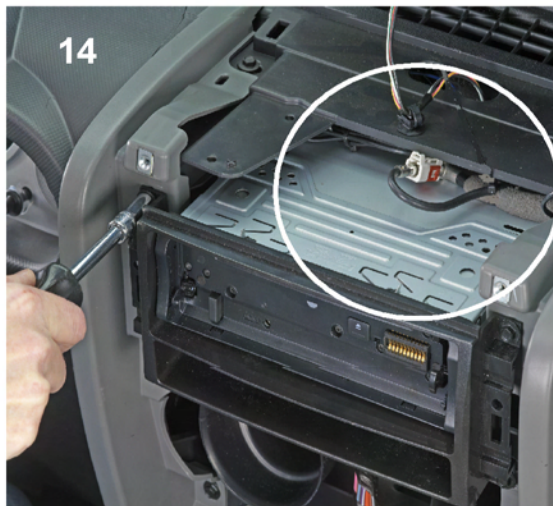


13. Connect the White Antenna Plug into the Black Antenna Cable coming from the New Radio as shown in picture #13. If you also have a Yellow Connector it will not be used.

14. Carefully tuck the Antenna Wires back into the Dash as shown in picture #14.

15. Before going any further, test the New Radio.

- A. Install Radio Faceplate.
- B. Turn on ignition key and verify that the Radio lights up.
- C. Turn Radio on and tune in a station.
- D. Adjust the volume up and down and check Radio for proper operation.



16. Install the remaining 3 screws for the Radio and reinstall the Dash.