

907 - Mountaineer Rack compartmentalizes your jeeps back seat compartment, enabling you to carry twice the load, and makes it easy to get at what you need during a days off road adventure while safely storing camping necessitates below. The Wrangler TJ design bolts on to the roll bar with out drilling utilizing U bolts and a clamp to snugly secure against roll bar. **For assistance please call (800) 777-0878.**

Mountaineer Rack instructions for Wrangler TJ 1997-current and Wrangler YJ 1993-1995 with roll bar mount. Wrangler YJ 1988-1996 and ALL CJ7's and CJ5's, with wheel well mount.

Mountaineer Rack can be install with or with out a hard top or a soft top in place.

Dimensions: 4" X 22" X 44.5"

Please read ALL directions before starting on Mountaineer Rack.



Mountaineer rack on TJ Wrangler with roll bar mount

Tools needed

- 3/8" or 1/2" drive ratchet wrenches
- Socket wrench sizes: 1/2", 9/16"
- Open end/ combination wrench sizes: 1/2", 9/16"
- 1/8" Allen wrench
- Silicon sealer

Optional tools (Depends on application)

- Drill motor
- 3/8" Drill bit
- 5/16" Drill bit
- Level

Note:

- 5/16" bolts use 1/2" wrench
- 5/16" nuts use 1/2" wrench
- 3/8" bolts use 9/16" wrench
- 3/8" nuts use 9/16" wrench

Hardware

Qty Description

907-12X-11X

- 4 5/16" x 2 1/4" Hex head bolts
- 8 5/16" x 1 1/2" Hex head bolts
- 24 5/16" Flat washers
- 12 5/16" Ny Lock nuts
- 6 3/8" Eyebolts
- 24 3/8" Flat washers
- 6 3/8" Ny Lock nuts
- 8 1/4" x 3/4" Allen set screws
- 4 R- Plastic caps
- 4 C- Brackets

CJ wheel well mounting hardware

907-10X-13X

- 4 R- Plastic caps
- 8 1/4" x 3/4" Allen set screws
- 2 3/8" Threaded knobs
- 16 3/8" Ny Lock nuts
- 46 3/8" Flat washers
- 6 3/8" X 1 1/4" Hex head bolts
- 6 3/8" Eyebolts
- 2 5/16" Ny Lock nut
- 2 5/16" x 1/2" shoulder bolt
- 2 5/16" flat washers

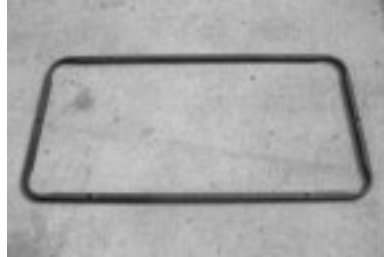
Parts list

- 4 Sliding support crossbeams
- 1 Super structure
- 1 Crossbar rack
- 1 Top rack loop
- 6 Spacer tubes
- 2 Roll bar mounts (For TJ and YJ with roll bar mounts) 12X & 11X
- 4 Mounting brackets (For CJ and vehicles with wheel well mounts) 10X & 13X

Contents photos



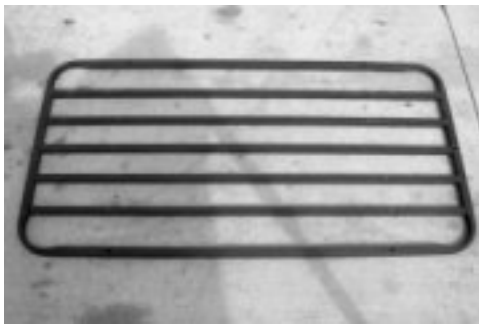
(1) Super structure



(1) Top rack loop



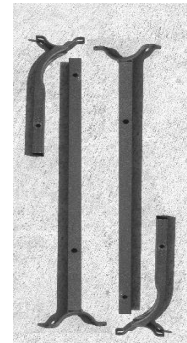
(4) Sliding support crossbeams



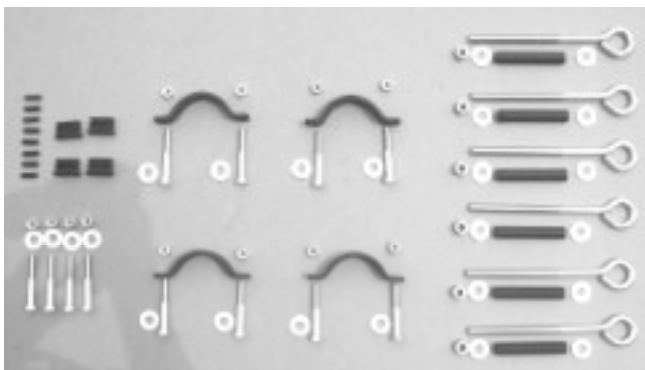
(1) Crossbar rack



(4) Plastic caps



Roll bar mounts
12X & 11X



TJ & YJ roll bar mounting hardware 12X & 11X

All vehicles complete Steps 1- 4.


Photo 1



Photo 2



Photo 3

Step 1. Lay the center super structure down with flat braces pointing up. Install $\frac{1}{4}$ " x $\frac{3}{4}$ " Allen head set screws loosely. Sliding support crossbeams will be slid into place at this time. Install sliding support crossbeams with the flat part facing up and the dimpled part facing down. Install the plastic caps in the sliding support cross beams. We recommend sealing all eyebolt assemblies with a silicon sealer along with all joints. See photos 1,2,3

Step 2. Place crossbar rack on top of super structure and align mounting holes in the square tube with the holes in the super structure.

Note: You may want to use an eyebolt to align the super structure with the crossbar rack.

Step 3. Place $\frac{1}{2}$ "x 3" tube spacers on top of the holes in the crossbar rack.

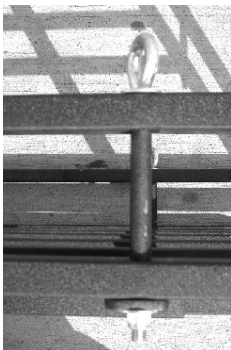


Photo 4



Photo 5

Step 4. Place top rack loop on top of spacer tubes and secure with $\frac{3}{8}$ " eyebolts, flat washer, and $\frac{3}{8}$ " NyLock nuts. Do this by installing a flat washer on eyebolt, slide eyebolt through top rack loop, through 3" spacer tube, through crossbar rack, through super structure, and then install a flat washer and NyLock nut. Securely tighten bolts at this time. Place completed rack to the side. See photos 4 & 5.

Installation for Wrangler TJ 1997-current and Wrangler 1993-1996 with roll bar mount. For installation on Wrangler YJ 1988-1996 and ALL CJ7's and CJ5's, wheel well mount, skip steps 5-10 and go to step 11.

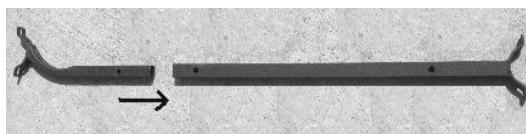


Photo 6

Step 5. Install the front roll bar mounts inside the rear roll bar mounts by sliding the front angled roll bar mount inside the rear straight roll bar mount until the holes line up. Place a $\frac{5}{16}$ " x 2" bolt in the hole to keep the holes lined up until the roll bar mounts are securely attached to the roll bar. See photo 6.

Note: The angled ends of the roll bar mount go towards the front of the jeep pointing out and the straight ends of the roll bar mount go towards the rear of the jeep.



Photo 7



Photo 8

Step 6. Bolt roll bar clamps around roll bar using 5/16" x 1 1/2" bolts, flat washers, and a 5/16" NyLock nut. Make sure the roll bar mounts are level from front to rear. Tighten down all bolts evenly. See photo 7&8. Remove the 5/16" x 2" bolts you used in step 5 to keep the holes lined up.

CAUTION: Some roll bars have wiring for the sound bar or lights under roll bar padding and care is required not to short these wires. If you have any wires that run along your roll bar, make sure they are routed on the outside of the roll bar mounts to avoid pinching and shorting of the wires.



Photo 9

Step 7. Carefully set the completed rack on the roll bar mount. The support crossbeams will then be bolted to the roll bar mount using 5/16" x 2" hex head bolts, flat washers and a 5/16" NyLock nut. See photo 9.

Step 8. Center completed rack and tighten down Allen head set screws.

Step 9. Re-check tightness on ALL nuts and bolts.

Step 10. After 500 miles or first off-road trip, whichever comes first, re-check tightness on ALL nuts and bolts.

Installation for Wrangler YJ 1988-1996 and ALL CJ7's and CJ5's, with wheel well mount. Steps 11-15.

Step 11. With the completed rack on top of wheel well adjust sliding support beams so the bracket seats tightly against interior sides of wheel wells. Drill 3/8" holes through the brackets closest to the front seats in the sides of the wheel wells and insert 5/16" shoulder bolts with flat washers from inside the wheel wells through the mounting bracket, fasten with 5/16" NyLock nuts and flat washers.

Step 12. Drill 3/8" holes on top of the rear brackets on the wheel well and insert 3/8" shoulder bolt with a flat washer from under the wheel well and fasten with 3/8" Ny Lock nuts and flat washers. This will secure the rear wheel well mount (closest to rear tail gate). Finger tighten bolts at this time. When securing the rack on the rear mounting brackets place a flat washer on first then slide the rack onto the rear mounting brackets and secure rack with 3/8" threaded knobs.

Note: If you would like to be able to pivot the mountaineer rack on the front mounts do not install the 3/8" hardware that goes through the top of the wheel well on the front mounts (closest to the front seat). This will allow you to remove the threaded knobs from the rear mounts and allow you to pivot the rack towards the front seat to gain easier access to items under the rack.

Step 13. Center completed rack and tighten down Allen head set screws and all other nuts and bolts.

Step 14. Re-check tightness on ALL nuts and bolts.

Step 15. After 500 miles or first off-road trip, whichever comes first, re-check tightness on ALL nuts and bolts.