

560- Rock Nerf Bar for Wrangler

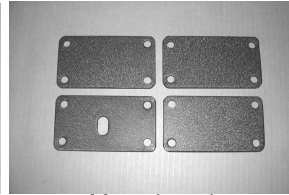
Olympic 4x4 Products are serviced by our factory. We provide answers to installation questions. We ship parts ASAP.

Try us before the hassle of returning Olympic 4x4 Products to your retailer or mail order specialist.

For assistance please call (800) 777-0878.



Rectangular nerf bar



Mounting plates



Sliding mounts

Hardware list

Qty	Description
16	3/8" X 4" hex head bolts
32	3/8" flat washers
16	3/8" Nylock nuts
2	5/16" X 2" hex head bolts
4	5/16" flat washers
2	5/16" Nylock nuts
16	Spacer tubes 2 1/2" long

Parts list

Rectangular nerf bars (2)
Mounting plate (4)
Sliding mounts (2)

Tools needed

3/8" or 1/2" drive ratchet wrenches
 Socket wrench sizes: 1/2", 9/16"
 Open end/ combination wrench sizes: 1/2", 9/16"

Note:

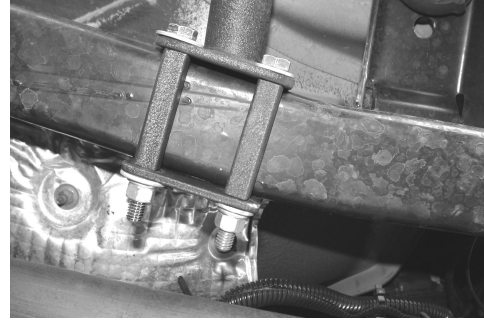
3/8" bolts use 9/16" wrench 3/8" nuts use 9/16" wrench
 5/16" bolts use a 1/2" wrench 5/16" nuts use 9/16" wrench

Step 1. If you have a 1997-2002 TJ wrangler or earlier YJ, slide the front leg of the nerf bar so that the front leg is in the shorter position and secure with the 5/16" X 2" hex head bolt, flat washers, lock washer, and 5/16" hex head nut. For 2003 and newer TJ Wranglers, slide the front leg of the nerf bar so that it is positioned in the second hole, in the longer position. Directions for the YJ Wranglers are the same as the TJ Wrangler. Wrangler unlimited (LJ) will mount similar to the TJ wrangler.

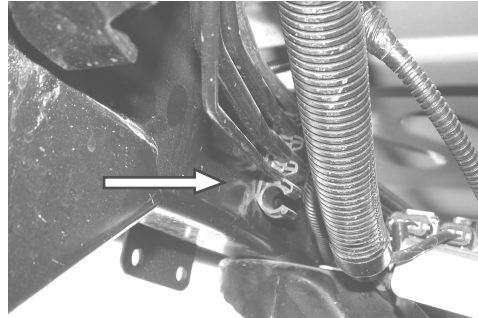
Step 2. Position the rectangular nerf bar so that the mounting bracket sits flush against the vehicle frame. Align the mounting bracket with your jeeps frame. Make sure both mounting brackets are flush

against the frame, if not adjust the sliding leg so that the mounting brackets are flush against the frame.

Note: You will find that you have a small amount of adjustment so you can decide the exact position you prefer.



Step 3. Place one of the four mounting plates on the inside of the vehicle frame and pass a 3/8" X 4" hex head bolt through the bracket on the outside of the vehicle frame, across the vehicle frame, through tubular spacer, and through the flat bracket on the inside of the vehicle frame. Secure the 3/8" hex head bolt with flat washers, and a 3/8" Nylock nut. Finger tighten bolts at this time. Repeat this for all mounting holes. See photos above.



Note: On 2003 and newer Wranglers, the rear mounting plate on the drivers side must be installed between the vehicle frame and the tubes that run along the frame rails. To do this you must first remove the snap-in holder with a flat head screw driver, place the mounting plate in place then the snap-in holder will fit inside the hole in the mounting plate.

Step 4. Place a second mounting plate on the inside of the vehicle frame and pass a 3/8" X 4" hex head bolt through the bracket on the outside of the vehicle frame, across the vehicle frame, through tubular spacer and through the mounting plate on the inside of the vehicle frame. Secure the 3/8" hex head bolt with flat washers, and a 3/8" Nylock nut. Finger tighten all bolts, then securely tight all bolts once everything is in place.

Step 5. Repeat steps 2-4 for the opposite side of your jeep.

Step 6. Re-check tightness on ALL nuts and bolts.