



dB Performance Exhaust System Installation
Axle-Back Exhaust System
1996-99 Jeep Wrangler (TJ)
Single Rear Exit- Part # 24414
2000-06 Jeep Wrangler (TJ)
Single Rear Exit- Part # 24415

Please take time to read and understand these installation instructions.

We recommend that the installation of this system be performed by a qualified service center or professional muffler installer who has the necessary equipment, tools and experienced personnel. However, if you decide to perform this install, the use of a hoist and an additional person will be required.

CAUTION: Never work on a hot exhaust system. Allow time for the vehicle to cool. Always wear eye protection when working under a vehicle.

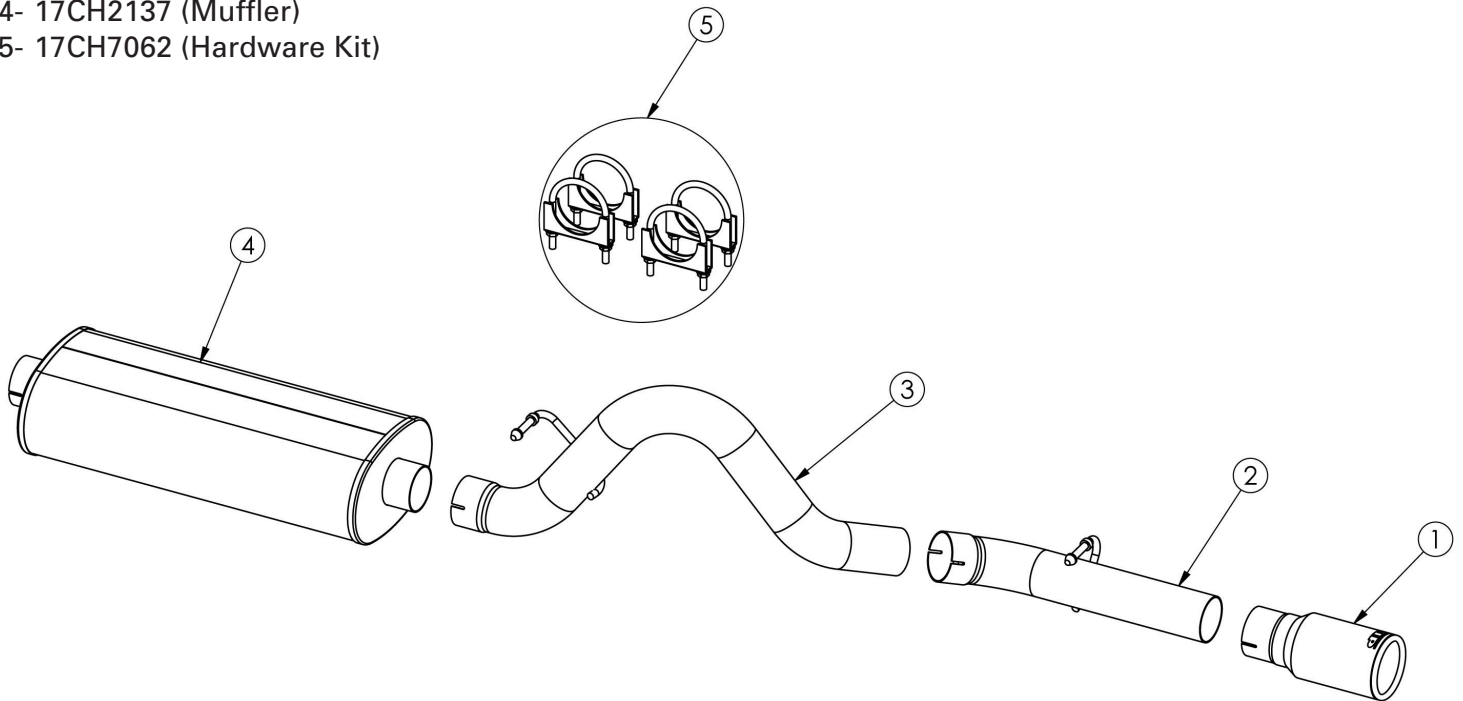
Recommended Tools:

• Safety Glasses • 13mm, 15mm, 17mm, & 18mm Wrench or Deep socket • Torque Wrench • Grommet Pullers • Chain Style Pipe Cutter • Soap & Water Solution

Please confirm that all parts are present before beginning the factory exhaust system removal and dB Performance Exhaust system installation.

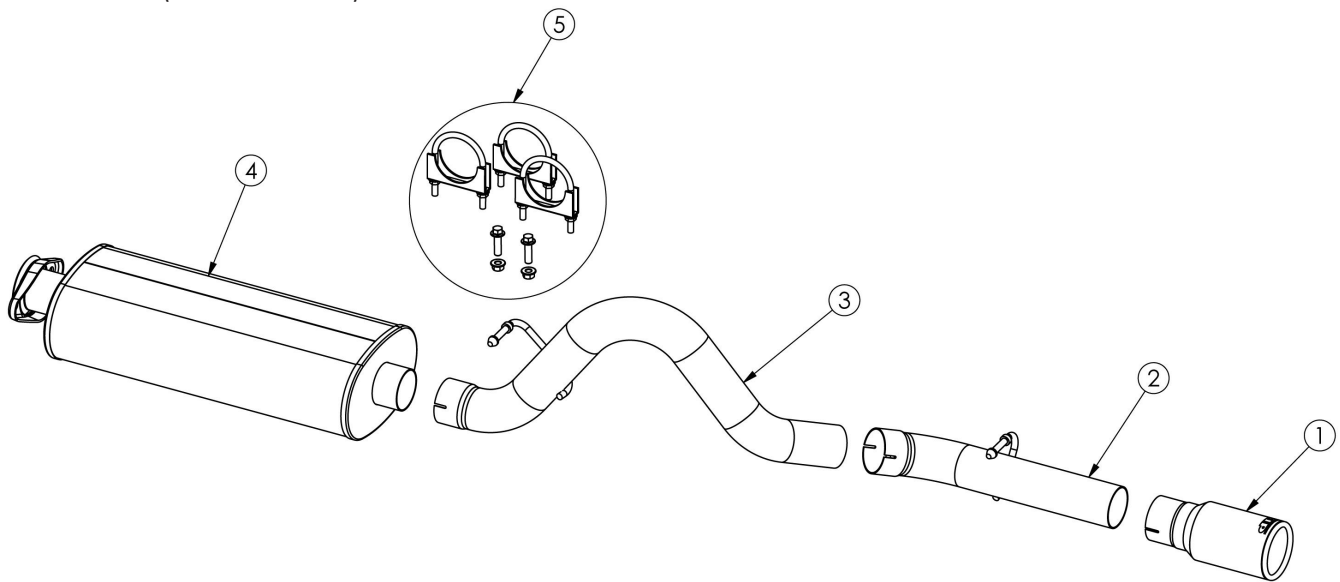
Part # 24414 Bill of Materials:

- 1- 17CH3018 (Tip Assembly)
- 2- 17CH4198 (Tailpipe Assembly)
- 3- 17CH4199(Intermediate Tailpipe Assembly)
- 4- 17CH2137 (Muffler)
- 5- 17CH7062 (Hardware Kit)



Part # 24415 Bill of Materials:

- 1- 17CH3018 (Tip Assembly)
- 2- 17CH4198 (Tailpipe Assembly)
- 3- 17CH4199 (Intermediate Tailpipe Assembly)
- 4- 17CH2136 (Muffler)
- 5- 17CH7066 (Hardware Kit)



Removal of Stock System:

NOTE: If the vehicle has a hitch, it needs to be removed before removing the stock exhaust.

For part number 24414, skip to step 3.

- 1) Using a 13mm socket, remove the 2 hex nuts from the front skid plate. Using an 18mm socket remove the remaining 2 hex nuts. (See Fig. A, B)

NOTE: Once the skid plate is removed, make sure to support the transmission before moving on to step 2.

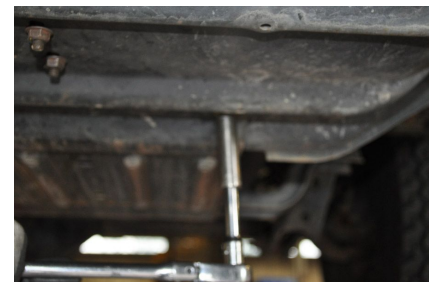


FIG. A



FIG. B

- 2) Using an 18mm socket, remove the 6 hex bolts from the transmission support plate. Using a 13mm socket, remove the remaining 4 hex nuts. (See Figs.C,D)
- 3) Place a chain style cutter around the outlet pipe slightly forward of the rear most hanger and cut the exhaust pipe. Using grommet pullers or similar device, remove the rear hanger from the rubber grommet to remove the tailpipe. (See Figs. E,F)

NOTE: Using a soapy water solution on the grommet hole will make removal easier.

- 4) **For part number 24414:** Using a 15mm socket, loosen the factory clamp at the inlet of the muffler. (See Fig. G)

For part number 24415: Using a 17mm socket, remove the 2 hex nuts from the flange bolts. (See Fig. H)

- 5) Carefully slide the muffler and tailpipe from the clamped or flanged location. This completes the removal of the stock system.



FIG. C



FIG. D



FIG. E



FIG. F



FIG. G



FIG. H

Installation of dB Performance Exhaust System:

NOTE: The supplied double edge clamps in this system will crush and permanently deform the exhaust piping as they are tightened. **DO NOT** tighten these clamps any more than is necessary to lightly hold the exhaust components in place, until the very end of this installation process. It will be difficult or impossible to make any positional or rotational adjustments to the exhaust system after these clamps have been tightened down.

VERY IMPORTANT: Align all clamps so that the open edge of the clamp bracket is parallel and aligned with the notch in the pipe, and the outside edge of the clamp bracket is approximately 1/8" from the end of the pipe expansion. (See Fig. 1) Failure to properly position or orient the clamps could result in a weak clamping load, or even a potential leak at the clamp joints.

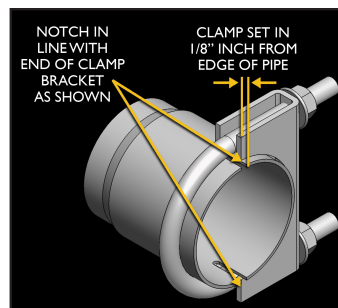


FIG. 1



FIG. 2

IMPORTANT: Make sure that the small drain holes in the muffler are facing down when the muffler is installed. (See Fig. 2)

- 1) **For part number 24414:** Locate the dB muffler and slide the expanded inlet end onto the factory pipe, making sure weep hole is facing down. Slide a 2.5" clamp over the expanded end of the muffler. Pre-tighten the clamp at this time. **(See Fig. I)**

For part number 24415: Locate the dB muffler and line-up the flange with the stock flange, making sure weep hole is facing down. Insert the bolts through both flanges with the head of the bolt facing the rear and place a nut on each, using a 10mm wrench to tighten the nuts. **(See Fig. J)**

- 2) Locate the over the axle pipe and slide the expanded end onto the factory pipe. Next, slide the hanger through the rubber grommet. Slide a 2.5" clamp over the expanded end of the pipe. Pre-tighten the clamp at this time. **(See Figs. K,L,M)**

- 3) Locate the tailpipe and slide the expanded end onto the axle pipe. Next, slide the hanger through the rubber grommet. Slide a 2.5" clamp over the expanded end of the pipe. Pre-tighten the clamp at this time. **(See Figs. N,O)**

- 4) Locate the tip and slide it onto the rear tailpipe. Slide a 2.5" clamp over the notched end of the tip. Align the tip so that there is about a one-half to one inch gap between the top of the tip and the bottom of the body panel with the logo facing up. Pre-tighten the clamp at this time. **(See Fig. P)**



FIG. I



FIG. J



FIG. K



FIG. L



FIG. M



FIG. N



FIG. O

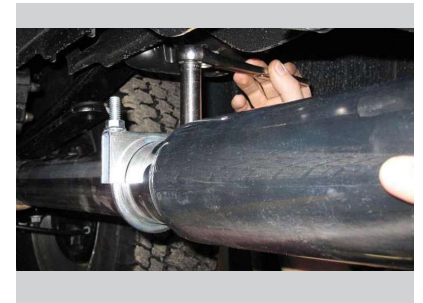


FIG. P



dB Performance Exhaust System Installation
Axle-Back Exhaust System
2007-2010 Jeep Wrangler
Single Rear Exit- Part # 24411
Dual Rear Exit- Part # 24412
Off-Road- Part # 24413

- 5) Make sure to adjust the break line away from the exhaust pipe.
- 6) Starting from the front of the vehicle and working back, tighten all clamps and the flange nuts to 35 ft-lbs.
- 7) It is **strongly recommended** that all clamps be checked and tightened after road testing the vehicle once the system has cooled.

NOTE: During cold weather start-ups, you may experience an exhaust sound that is deeper and louder in tone than usual. This is temporary and will diminish to normal levels once your engine has reached its normal operating temperature.

NOTE: Immediately following the installation of your exhaust system, you may experience a trace of smoke after initial start-up. DO NOT be alarmed. The smoke is caused by the burning of a small amount of forming oil residue used in the manufacturing process.