

**Please take time to read and understand these installation instructions.**

CORSA recommends that installation of this system be performed by a qualified service center or professional muffler installer who has the necessary equipment, tools and experienced personnel. However, if you decide to perform this install, the use of a hoist and an additional person will be required.

**CAUTION:** Never work on a hot exhaust system. Allow time for the vehicle to cool. Always wear eye protection when working under a vehicle.

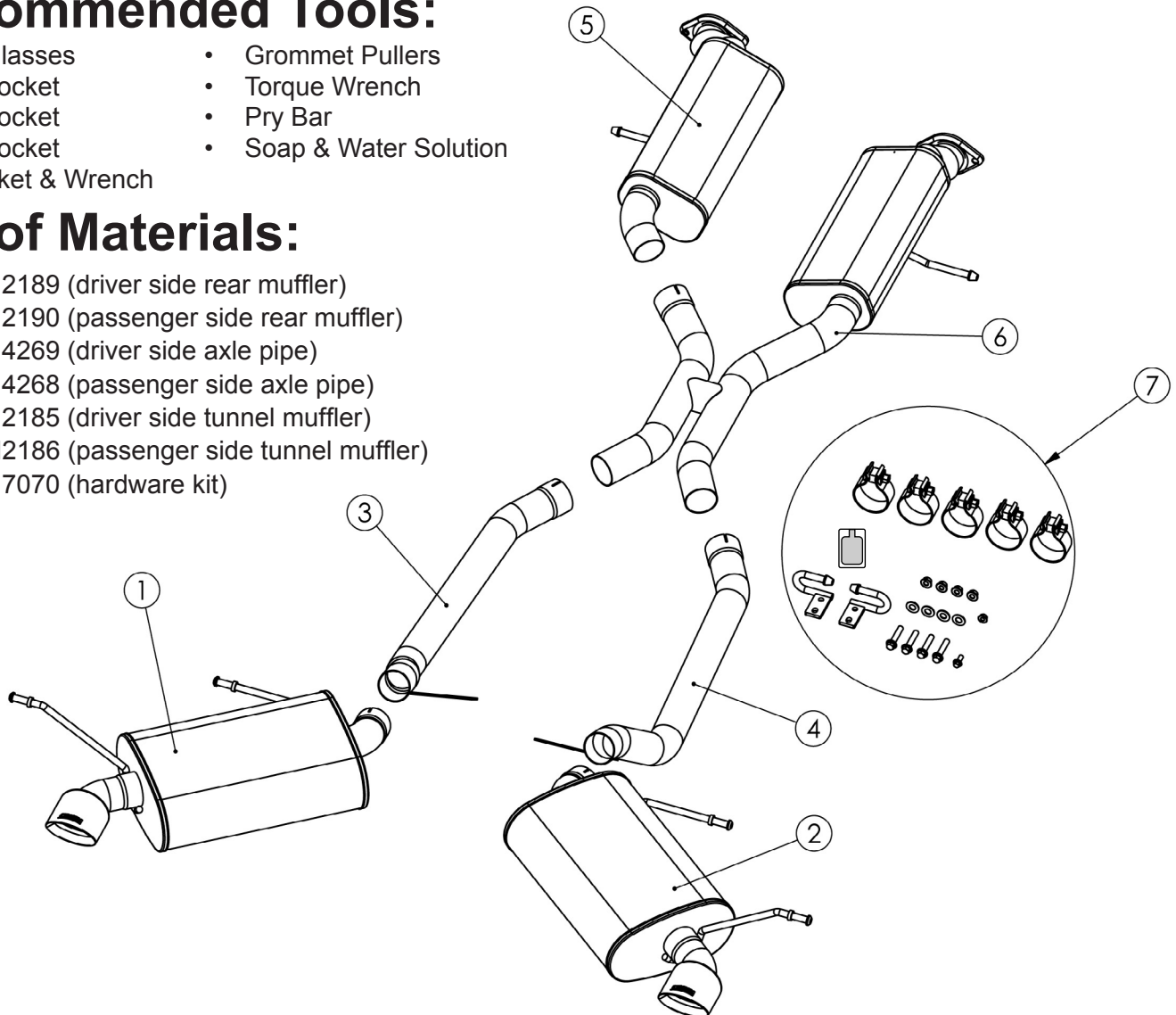
**Please confirm that all parts are present before beginning the factory exhaust system removal and CORSA exhaust system installation.**

## Recommended Tools:

- Safety Glasses
- 13mm Socket
- 14mm Socket
- 15mm Socket
- 1/2" Socket & Wrench
- Grommet Pullers
- Torque Wrench
- Pry Bar
- Soap & Water Solution

## Bill of Materials:

- 1 - 17CH2189 (driver side rear muffler)
- 2 - 17CH2190 (passenger side rear muffler)
- 3 - 17CH4269 (driver side axle pipe)
- 4 - 17CH4268 (passenger side axle pipe)
- 5 - 17CH2185 (driver side tunnel muffler)
- 6 - 17CH2186 (passenger side tunnel muffler)
- 7 - 17CH7070 (hardware kit)



## Removal of Stock System:

**Note:** If vehicle is equipped with a rear tow hook, this must be removed before installation.

1) Using a 15mm socket and ratchet, loosen the flange bolts on the driver side rear muffler connection. Pull the rear muffler flange studs out away from the axle pipe flange (See Fig. A & B).



Fig. A

2) Next, remove the rear muffler hanger from the factory rubber grommet. The rear muffler hanger is above the muffler body towards the driver side of the car. This grommet can be removed by hand if grommet pullers will not fit into the cavity around the hanger (See Fig. C).



Fig. B

3) After the hanger is free from the rubber grommet, remove the driver side muffler from the car and set aside.

**Note:** A soapy water solution will aid in the removal of all hangers from factory rubber grommets.

4) Remove the driver side axle pipe hanger from the factory grommet (See Fig. D).

5) Now remove the passenger side axle pipe hanger from the factory grommet. Removing the axle pipe hanger will make removing the rear muffler grommet on the passenger side easier (See Fig. E).

6) Repeat step #2 on the passenger side.

7) Using a stand or the help of another person, support the rear of the system after removing from the rear factory grommets.

8) Next, using a 13mm socket and ratchet, remove the two bolts holding the front driver side hanger to the frame of the vehicle. Set the bolts aside as they will be used later for the installation of the CORSA system. Repeat this on the passenger side as well (See Fig. F).

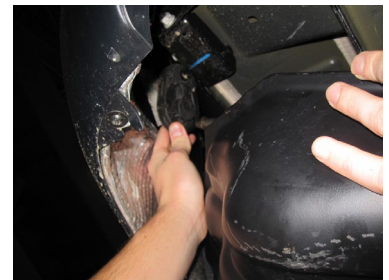


Fig. C

9) Using a 14mm socket and ratchet, remove the spring nuts from the factory studs at the flange connections on both driver and passenger sides of the tunnel muffler (See Fig. G).

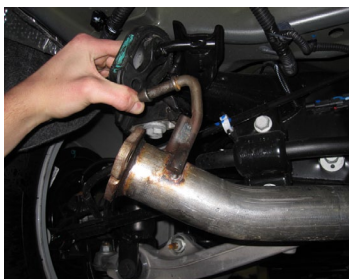


Fig. D

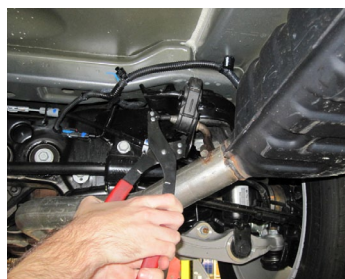


Fig. E



Fig. F

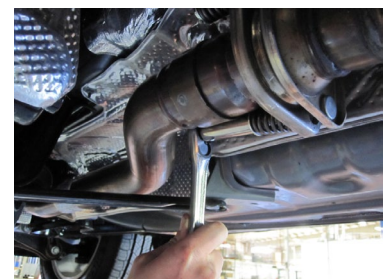


Fig. G

10) Now that all hangers and flange nuts have been removed, the system will be free from the car. Remove what remains of the factory system by pulling towards the rear of the car and then lowering from the vehicle. Set the factory system aside.

11) Remove the orange factory grommets from the system. They will be used for the installation of the CORSA system (See Fig. H & I).

12) Stock removal is now complete.



**Fig. H**

## Installation of CORSA Exhaust System:

**NOTE:** Apply the anti-seize lubricant (supplied) to the threads **ONLY** of all the clamps and flange bolts. Failure to follow this procedure can cause nuts to seize on clamps and potentially destroy threads. After applying anti-seize lubricant, be sure to thoroughly clean hands as lubricant will tarnish stainless steel.

**NOTE:** Align all clamps so that the center of the clamp bolt is 90 degrees from the notch in the pipe (See Fig. 1, CLAMP to the right.)

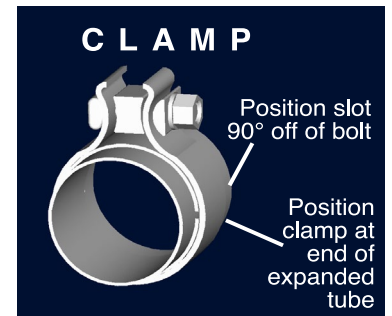
All clamps should be tightened using a properly calibrated Torque Wrench. Using an air impact gun will damage the clamp and reduce its ability to effectively seal the joint. It may also cause the joint to separate thereby causing damage to your exhaust system and your vehicle.

1) Locate the supplied hanger brackets. Slide the orange colored factory hangers onto the supplied hangers. Then reusing the factory bolts, bolt the hangers to the vehicle with the hanger rod towards the front of the vehicle as shown (See Fig. J & K). Snug the hanger bolts at this time and torque the bolts to 18 ft-lbs.

2) Locate the CORSA H-Pipe driver and passenger assemblies, and fit together with clamp in place. The use of a stand or help of another person is recommended for this step. Align the H-pipe assembly flanges with the factory flanges, and using the supplied hardware, hand thread the flange nuts onto the flange bolts (See Fig. L). Using a 15mm socket and ratchet, loosely snug the clamp (See Fig. M).



**Fig. I**



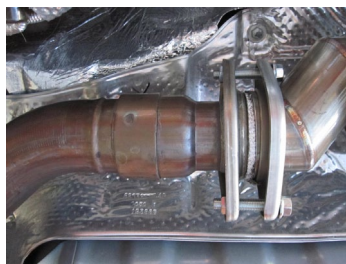
**Fig. 1**



**Fig. J**



**Fig. K**



**Fig. L**



**Fig. M**



- 3) Insert the H-Pipe assembly hangers into the orange factory grommets (See Fig. N).
- 4) Locate the CORSA driver side axle pipe and a supplied 2.5" clamp. Slide the clamp over the expanded side of the axle pipe. Slide the axle pipe onto the driver side outlet of the H-Pipe. Using a 15mm socket and ratchet, loosely snug the clamp at this time (See Fig. O).
- 5) Locate the CORSA passenger side axle pipe and a supplied 2.5" clamp. Repeat step #4.
- 6) Locate the CORSA driver side rear muffler. Slide a supplied 2.5" clamp over the expanded end of the muffler. Insert the muffler hangers into the factory grommets. It will be easier to insert the rear most hanger into the factory grommet first (See Fig. P), followed by the hanger nearest the sway bar (See Fig. Q). Then slide the expanded end of the muffler over the outlet of the driver axle pipe. Using a 15mm socket and ratchet, loosely snug the clamp at this time (See Fig. R).
- 7) Locate the CORSA passenger side rear muffler. Slide a supplied 2.5" clamp over the expanded end of the muffler and repeat step #6.
- 8) Using the supplied bolt and nut, use a 1/2" socket and wrench to join the braces on the axle pipe (See Fig. S). Hold tips in position while tightening to 20 ft.-lbs.
- 9) Visually inspect the exhaust system position, tip alignment, clamp orientation, and exhaust system clearances. Make any necessary adjustments at the clamp joints (See Fig. T).
- 10) After the exhaust system is in the desired location, tighten all flange bolts and clamps starting at the front of the system and moving rearward. **Torque all flange bolts to 30 ft-lbs and all clamps to 45 ft-lbs.**
- 11) It is strongly suggested that all clamps and flange bolts be re-checked and re-tightened (if necessary) to the recommended torque after initial road testing of the vehicle as thermal cycling has occurred. Please wait until the system has fully cooled before performing this step.



**Fig. N**



**Fig. O**



**Fig. P**



**Fig. Q**



**Fig. R**



**Fig. S**



**Fig. T**

**NOTE:** During cold weather start-ups, you may experience an exhaust sound that is deeper and louder in tone than usual. This is temporary and will diminish to normal levels once your engine has reached its normal operating temperature.

**NOTE:** Immediately following the installation of your exhaust system, you may experience a trace of smoke after initial start-up. DO NOT be alarmed. The smoke is caused by the burning of a small amount of forming oil residue used in the manufacturing process.