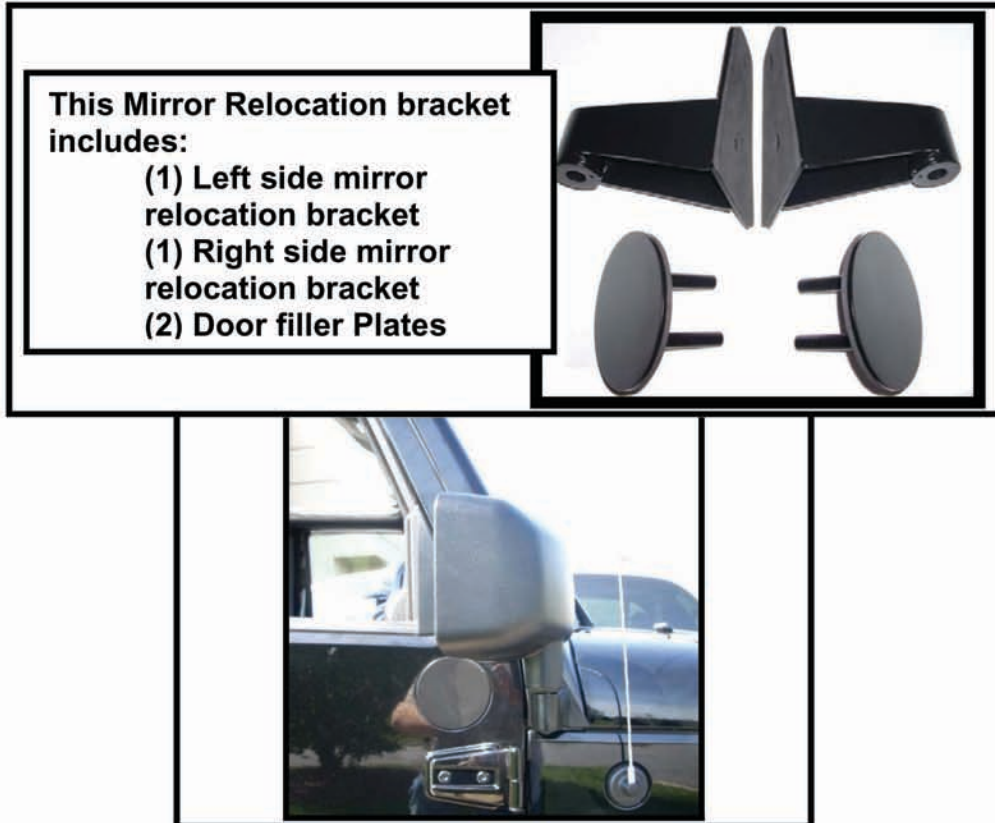


2007 JK Wrangler Mirror Relocation Kit
P/N:13125.0004 (Black) –13125.0014 (Stainless)
Applications: 2007-11 Wrangler 4dr and 2dr

PLEASE READ THESE INSTRUCTIONS prior to installing.

This kit requires you to remove your factory mirror from your 2007-2008 Wrangler front doors. In most states it is required to maintain at least two rear facing mirrors at all time on any motor vehicle. With your new Rugged Ridge mirror relocation kit the location of your factory mirror head is moved forward, off the door, to the front A-pillar (windshield frame). Once relocated a special door filler plate is supplied to cover the opening left on the factory half, or full doors. This plate will allow you remove your doors at anytime for open air driving.

PLEASE NOTE: Due to the placement of the new mirror brackets, the passenger side mirror will be partially blocked with full doors reinstalled. **This is normal** and is an unfortunate side effect of the new mirror placement. With doors removed or the installation of factory half doors visibility will **NOT** be blocked and function as intended.



Installation Instructions

Step 1: Using a #40 torx head bit or socket, unscrew the torx head bolt located under the head of the factory mirror.

DO NOT DISCARD THIS BOLT

It will be reused later for reassembly. Remove the mirror head.

NOTE: Some force may be needed to remove the mirror head from the bracket. Carefully work the mirror head from side to side until it is free.

Step 2: With the mirror head removed, open the front door and lower the window. Working through the window using the same #40 torx, remove the 2 bolts located on the inside in front of the door panel. Hold the mirror bracket to keep it from falling and damaging the door or paint.

DO NOT DISCARD THESE BOLTS These will be reused for installation of the door filler plates.



Step 3: Remove the front 2 torx head bolts from the windshield retainer bracket.

(DO NOT DISCARD THESE BOLTS) Both these bolts will be reused to install the mirror relocation bracket in step 4.

Installation Instructions

Step 4: Install the mirror relocation bracket using the 2 torx head bolts removed in step 3. Alternate tightening of the upper and lower bolts until secure.

NOTE: Adjust the bracket as you tighten to properly align it to the top fender and door line.



Step 5: Install the door filler plate, again working through the open window.

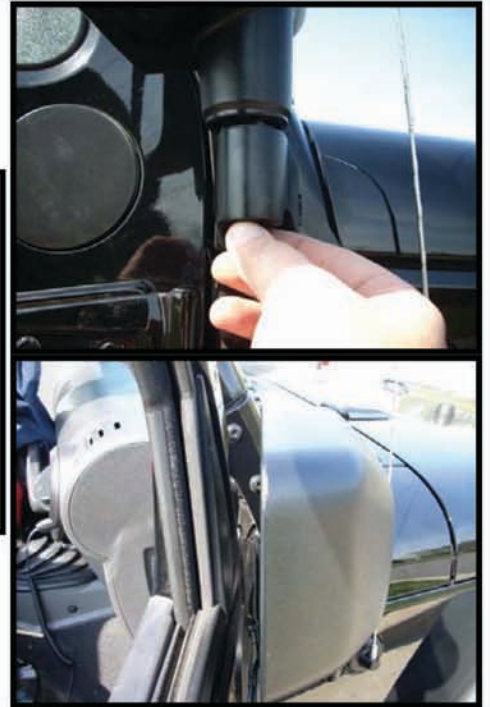
The Longer mounting tube needs to be placed at the bottom and the shorter tube to the top. Alternate from top to bottom while tightening to secure the door filler plate.



Installation Instructions

Step 6: Insert the mirror into the new relocation bracket as shown in . Start the torx head bolt that was removed in step 1. Tighten the bolt so that the mirror is snug but still movable inside of the mirror relocation bracket. Open the door and adjust the mirror parallel to the door or when there is no contact with the door. After the mirror has been repositioned, tighten the bolt until the breakaway feature works.

Caution: DO NOT OVERTIGHTEN The mirror head base is made of aluminum and can easily be stripped.



Please note: Due to production changes made in late 2008 it is required that a plastic insert be used when installing the mirror head into the mirror relocation bracket. The plastic inserts account for a reduction made in the mirror head mounting shaft taper size. Late 2008 shafts are 2mm smaller than earlier 2007-2008 Jeep® JK Wranglers. Inserts are required for proper fitment and operation of mirrors. After insertion of the insert, refer to step 6 for proper installation of the mirror head.

NOTE: To ease installation of the mirror head the insert can be cut into two separate halves.



Step 7: Repeat steps 1-6 for the opposite side.