



MOUNTAIN OFF ROAD ENTERPRISES, LLC.  
P.O. BOX 690 DELTA COLORADO 81416  
970-625-0500  
Toll Free: 877-533-7229  
970-625-3747 FAX  
E-mail: info@mountainoffroad.com  
www.mountainoffroad.com

## INSTALLATION INSTRUCTIONS for JKFTR Freedom top rack



### HARDWARE KIT:

- |                        |                            |
|------------------------|----------------------------|
| 1- freedom top rack    | 4- 1/4 loc-nuts            |
| 2- angle brackets      | 6- 1/4 flat washers        |
| 1- padded spreader bar | 2- 1/4 round steel spacers |
| 4- 3/8x1 Bolts         | 2- 3/16 oval steel spacers |
| 4- 3/8 loc-nuts        | 4- plastic spacers         |
| 8- 3/8 flat washers    | 1- wrench                  |
| 2- 1/4x.75 Bolts       |                            |
| 2- 1/4x1 Bolts         |                            |



Please read and understand all instructions before beginning the installation of the Freedom Top Rack. Please read the terms and policies on the back of these instructions.

The JKFTR Freedom top rack is designed to fit the following Jeep® vehicles: 2007 to 2010 Four door JK Unlimited Wranglers® equipped with the removable factory freedom top system.

**STEP 1:** Position the 2 angle brackets next to the freedom top rack and attach with 1/4"x1" and 3/8"x1" bolts and nuts. Place a flat washer on each end of the bolt with a plastic spacer in between the rack and the angle bracket. (see figure 1) Do not over tighten nuts.

**STEP 2:** Install padded spreader bar using 3/8"x1" bolts, nuts, and washers. Tighten nuts such that the bar will stay in the upright position. (see figure 2)

**STEP 3:** Remove and save the nuts holding the back of the rear seat brackets. Install 1/4" round spacers over bolt. (see figure 3)

**STEP 4:** Remove the cover for the jack storage compartment and lift the carpet flaps, place a 3/16" oval spacer under the flap paying attention to align the holes. (see figure 4)

**STEP 5:** Place assembled rack into the rear of the Jeep®. Insert the 2 seat bolts through the larger slotted holes in the angle brackets and install the nuts that were removed earlier. (see figure 5). Carefully punch or drill through the carpet flaps and install 1/4"x.75" bolts with washers. Install 1/4" nuts under the brackets using supplied wrench. (see figure 6)

**STEP 6:** Place passenger side freedom top into rack as shown and lower spreader bar. (see figure 7)

**STEP 7:** Place drivers side freedom top into rack as shown, pay close attention to the position of the latches on the top panels. (see figure 8)

**STEP 9:** Verify smooth operation of the range of motion and all latches. Latches should be tight to insure rattle free protection of your freedom tops. Your rack can be laid down or latched up to best suit your needs.



FIGURE 1

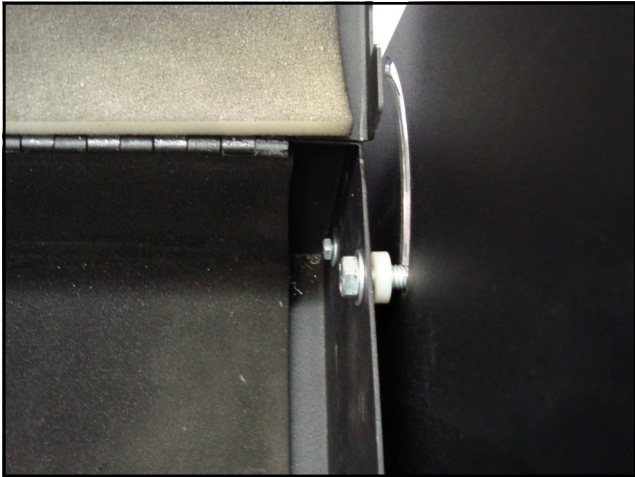


FIGURE 2

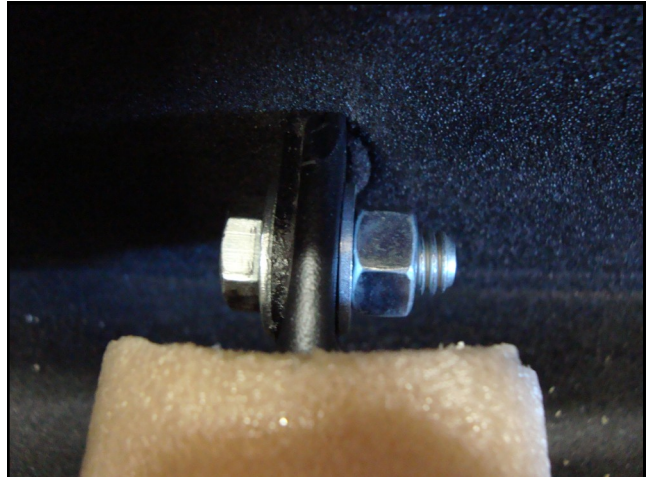
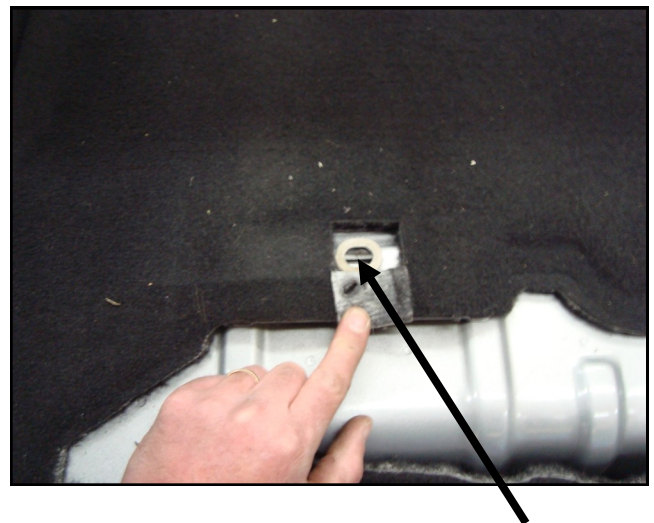


FIGURE 3



FIGURE 4



3/16" thick oval spacer



FIGURE 5

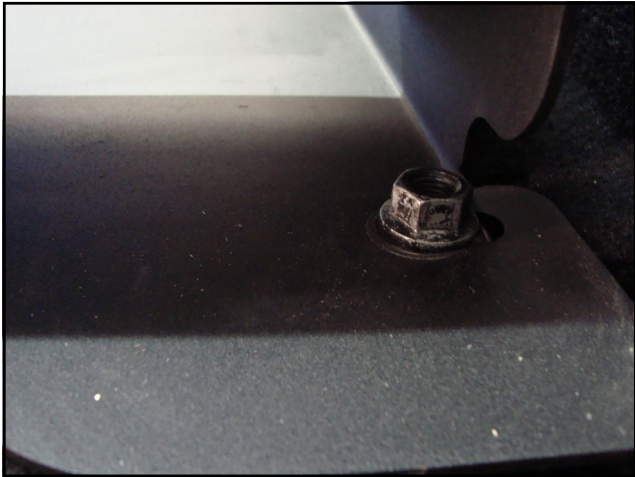


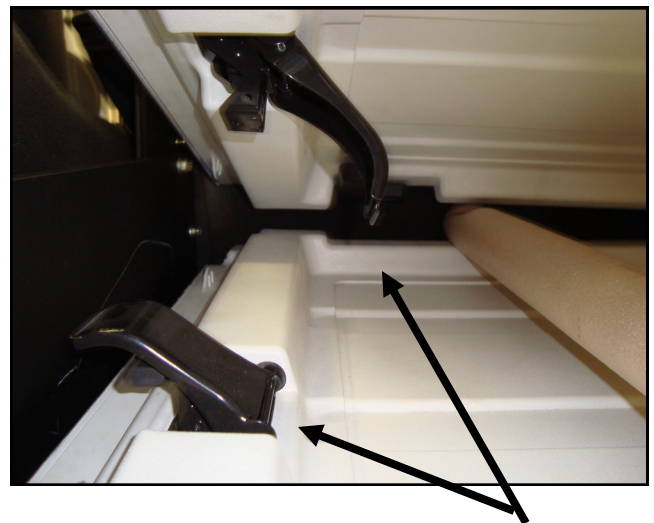
FIGURE 6



FIGURE 7



FIGURE 8



**Position latches as shown!**



TERMS-POLICIES:

**FIT and TOLERANCES:** This storage box is the result of countless hours of research, testing, fitting and refining. Jeep's® have a wide tolerance on bolt hole centers from frame to frame. This is why M.O.R.E.™ has installed “slots” in which to mount them. In addition to the factory tolerances, most people install other than factory equipment such as suspension lift kits, bumpers, etc. M.O.R.E.™ has done the best job we can to insure that our parts fit with all of the possibilities. However, you may find it necessary to grind, elongate, bend, or force these parts to fit on your rig. Please use common sense when installing these parts and let us know how we can improve them.

**DAMAGE CLAIMS:** All orders are carefully packed, however, mishandling by the carrier can result in damage. The carrier has the responsibility for the shipment from the time it leaves our warehouse until it is delivered to you. All claims for lost or damaged goods should be reported to the carrier, not to **M.O.R.E.™** LLC.

**RETURNS:** No returns will be accepted without prior permission from **M.O.R.E.™** LLC. After you receive a Return Goods Authorization (RGA) number, merchandise must be returned prepaid and insured. A claim must be made within 30 days from receipt of merchandise. The original invoice or a copy with the RGA number written on must accompany all returns. A 20% restocking fee will be charged on all parts returned for credit or refund unless merchandise is proven to be defective or was shipped wrong by **M.O.R.E.™** LLC. No merchandise will be issued credit or refund if it has been installed, modified, used in any way or is in unsalable condition.

**WARRANTY:** All merchandise is warranted to be free from defects in materials and workmanship prior to installation. Any alteration or improper use will void this warranty. Because all parts we sell are intended for use in heavy-duty applications it is not possible to warrantee or guarantee the performance of any items. **M.O.R.E.™** LLC. products and the products manufactured by others, which we sell may be subject to an infinite variety of conditions due to the manner in which they are used, serviced and/or installed. Purchasers and users of such products rely upon their own judgment as to the suitable use selection, service and installation of such products.

**PRODUCT DISCLAIMER:** Modification of your vehicle to enhance performance with parts sold by **M.O.R.E.™** LLC. may create a dangerous condition which could cause serious bodily injury, and the buyer hereby expressly assumes all risks associated with any such modifications. All parts sold by **M.O.R.E.™** LLC. are for racing or off road use only. Mountain Off Road Enterprises LLC. will not accept responsibility for personal injury or property damage arising from the failure of any parts manufactured or sold by **M.O.R.E.™** LLC.

**Specifications are subject to change without notice.**

**Jeep®**, **AMC®**, **CJ®**, **YJ®**, **TJ®**, **LJ®**, **JK®**, **Wrangler®**, are registered trademarks of DaimlerChrysler. **M.O.R.E.™** is not affiliated with DaimlerChrysler.

**M.O.R.E.™**, **BombProof™**, **S.R.S.™**, **SlipLoc™**, **DoubleJointed™**, **RockProof™**, are trademarks used by **Mountain Off Road Enterprises, LLC**. These instructions and the M.O.R.E.™ logo are copyright©, 1999-2009.