

INSTALLATION MANUAL

FOR

ROCK KRAWLER SUSPENSION, INC.

Heavy Duty Transmission Pan for 42RLE

FIRST EDITION

03/01/10

ROCK KRAWLER

S U S P E N S I O N

Dear customer: Thank you for purchasing the best upgrades on the market for your Jeep Vehicle. We are sure you will be happy with the product after your installation is complete. Please take your time during the installation and be sure to do it correctly. Completely read the directions before starting your installation so you know what to expect. Remember, your vehicle depends on it. Should you have any questions during this installation feel free to give our tech line a call (518-270-9822) and we will be happy to help you.

Note: BE SURE TO CHECK ALL FASTENERS FOR PROPER TORQUE BEFORE TEST DRIVE. RECHECK AFTER 500 MILES AND BE SURE TO CHECK PERIODICALLY.

Warning

Read and understand all instructions, warnings and safety precautions in these instructions and your owner's manual before attempting to install these components.

Caution

Proper installation of Rock Krawler Suspension, Inc. Products requires knowledge of recommended procedures for disassembly/assembly of OE vehicles and components. Access to OE shop manuals and special tools are required. Attempting to install this kit without knowledge of these procedures may affect the safety of your vehicle and or the performance of these components. Rock Krawler Suspension, Inc. strongly recommends that this system be installed by a certified mechanic with off road experience.

ROCK KRAWLER

S U S P E N S I O N

Caution

Rock Krawler Suspension Inc. recommends the use of locktite on all hardware, unless noted otherwise.

Warning

Properly block and secure vehicle prior to installation.

Warning

Always wear safety glasses when using power tools

Warning

Rock Krawler Suspension Inc. does not condone or authorize the use of any other suspension components with its products. Should Rock Krawler Systems or components be installed in junction with other products or not per the provided instructions Rock Krawler Suspension Inc.'s warranty is void and is not to be held accountable for any resulting actions.

Items you will also need other than standard tools:

Automatic Transmission RTV Sealant, possibly a Lube Locker Gasket for your Transmission Pan if you do not feel comfortable using RTV, sand paper and proper transmission fluid for your application.

Helpful hint:

Do not tighten connections until assemblies are installed in entirety.

ROCK KRAWLER

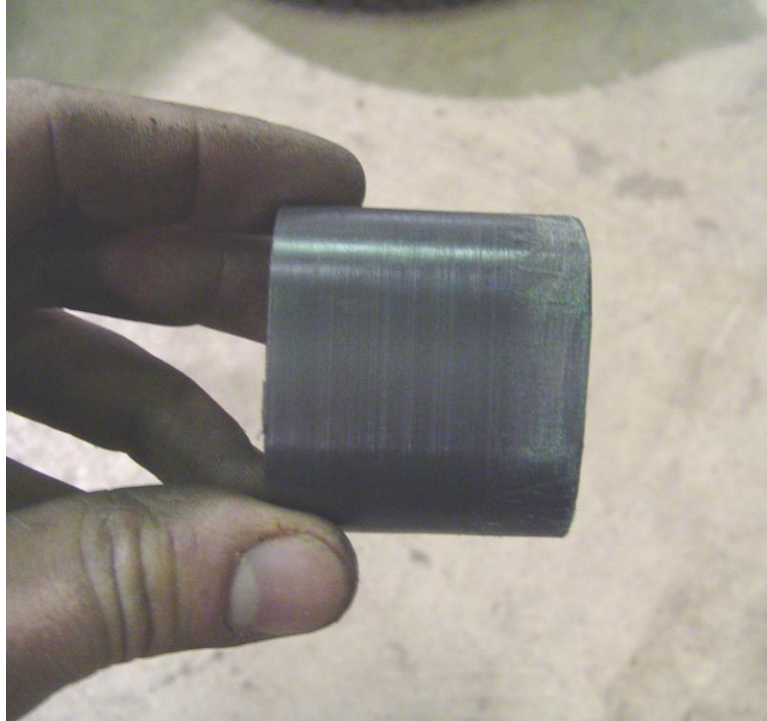
S U S P E N S I O N

Follow These Simple Steps and This will be a Snap!

- 1) Make sure vehicle is still on a level hard, working surface. Block the rear wheels so the vehicle cannot move and make sure the emergency brake is applied.
- 2) Have a large capacity catch pan ready before removing the hardware, this will make a mess.
- 3) Use a 10mm socket and any combination of universal extensions to remove all the bolts for the transmission pan. It may be useful to manipulate the exhaust to get easy access to the back set of bolts by unbolting it from the manifolds or headers.
- 4) It may be helpful to leave one or two bolts still loosely installed so minimize the mess. Tap the side of the pan with a rubber mallet to break the seal and drain all the fluid out of the pan.
- 5) Remove the filter. Now is a good time to replace it prior to putting everything back together!
- 6) Grab the supplied pick up extension and rough up the outer surface using some sand paper. This will ensure better adhesion for the silicon sealant.

ROCK KRAWLER

S U S P E N S I O N



Roughed Up Pick Up Extension

- 7) Rough up the filter where the pick up extension is going to attach using the same sand paper as shown below.

ROCK KRAWLER

S U S P E N S I O N



Roughed Up Filter Pick Up

- 8) Push the extended pick over the original pick up lip with the roughed up side toward the filter and apply a bead of silicon sealant all the way around as shown below.



Silicon Applied to Joint Area

ROCK KRAWLER

S U S P E N S I O N

- 9) Smooth the sealant as shown below, wipe away any excess and allow for it to cure prior to exposing to transmission fluid.



- 10) Install the filter back into the transmission using the original hardware.

- 11) Now it is time to install the HD Tranny Pan.

- A) If you are using a Lube Locker gasket, then go ahead and secure the pan with the Lube Locker Gasket between the pan and transmission using the OEM hardware. Be sure to tighten up the hardware evenly and do not tighten over 15 ft-lbs of torque.
- B) If you are using the recommended grade of silicon sealant from above, put a nice consistent ring around the seal surface and around the bolt holes prior to putting it in place! Be sure to follow the cure procedure for the silicon sealant and tighten as suggested in step 11A.

ROCK KRAWLER

S U S P E N S I O N



Installed Rock Krawler HD Tranny Pan

- 12) Be sure the drain plug is properly installed and once everything is set up, you can then fill the transmission with fluid to the proper level marked on the stick using the recommended transmission fluid only!
- 13) Nice work. Now that your installation is complete go out and enjoy your Jeep!