

Jeep Wrangler TJ Bedrug/BedTred Interior Installation Instructions



Congratulations on choosing the finest interior flooring kit available for your Jeep. The Bedrug/Bedtred material is mold and mildew resistant, easily cleaned with water & household cleaning chemicals and extremely resistant to most chemicals.

- **Kit Contents:** Driver side front floor, passenger side front floor, rear passenger floor, heat shield material, hook fasteners, and instruction sheet.
- **Tools needed:** Phillips screwdriver, utility knife, soap, water, and rubbing alcohol.



PREPARATION

1. Read all instructions before beginning installation.
2. Remove old Jeep flooring material (if equipped).
3. Wash and dry the floor pan areas thoroughly.
4. Place the hook fasteners on each piece of loop sewn on the back side of the Bedrug. For BedTred installation, place the hook fasteners to the loop surface on the underside of the BedTred. Use drawing on **Page 4** for proper location.
5. Pre-install provided heat shields on underside of the two front pieces in areas shown below, using the locator marks. (**Fig. 1** thru **Fig. 4**) Note: Passenger side heat shield is the larger of the two pieces.

IMPORTANT: Jeep floor should be at least 68°F (20°C) for maximum adhesion. Clean all areas with rubbing alcohol before applying tape. When removing backing, do not touch adhesive. If both front and rear kits were purchased be sure to install the rear cargo area first.



FIGURE 1: PASSENGERS SIDE



FIGURE 2: PASSENGERS SIDE



FIGURE 3: DRIVERS SIDE



FIGURE 4: DRIVERS SIDE

INSTALLING FRONT FLOOR PIECES

6. Adjust the front seats to the rear most position to allow maximum clearance for installation. Place front floor pieces into place. **(Fig. 5)** Tuck under console and around seat brackets as shown. **(Fig. 6)** **(Tip:** removing bolts from rear and/or front cup holders will allow console to lift up and position liner underneath easily – Reference picture 9)
7. Once properly aligned, pull back part to access the two pieces of hook fastener **(Fig. 7)**. Clean surface with alcohol then remove the film backing and roll the part back into place. Firmly press the top surface to ensure adhesive attachment. **(Fig. 8)** Repeat for other front floor piece.



FIGURE 5:



FIGURE 6:



FIGURE 7:



FIGURE 8:

INSTALLING REAR FLOOR PIECE

8. Adjust the front seats to the fully forward and tilted up (passenger entry) position. Loosen the two screws located in the bottom of the cup holders on the rear of the console if equipped. **(Fig. 9)** Next place the rear floor piece into place. **(Fig. 10)**



FIGURE 9:



FIGURE 10:

9. Tuck the part under the console and around the front seat brackets as shown. (**Fig. 11** and **Fig.12**)



FIGURE 11:



FIGURE 12:

10. Next lift the floor piece from the outside of the vehicle toward the center to access the hook fastener. (**Fig. 13**) Clean surface with alcohol then remove the film backing from both pieces and roll the floor back into place. Firmly press the top surface to ensure adhesive attachment.
11. Now fit and tuck part around seat brackets, roll bar, and seat belt mounts. (**Fig. 14**) Repeat for opposite side of vehicle.
12. Retighten the two console screws located in the bottom of the cup holder.

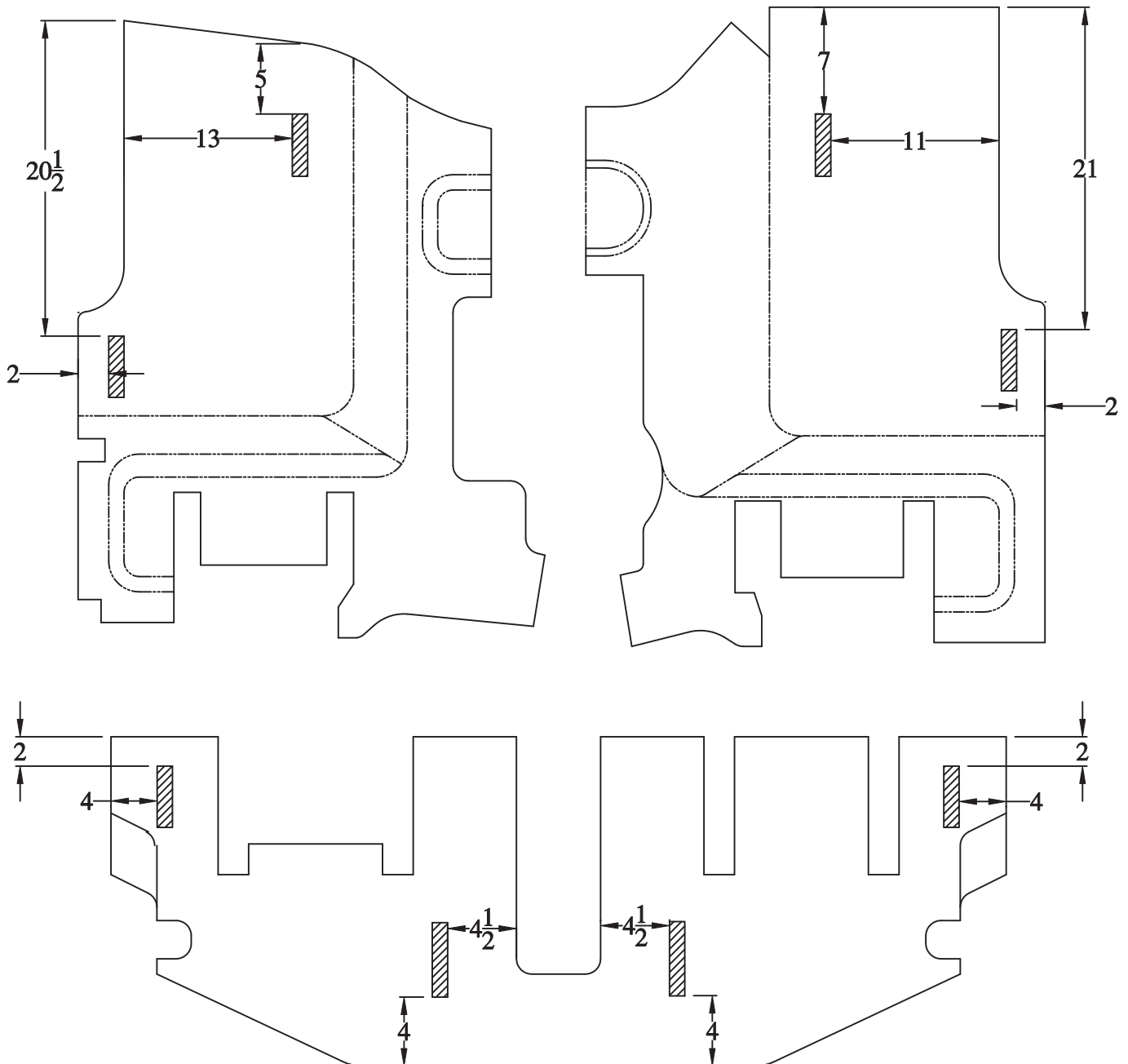


FIGURE 13:



FIGURE 14:

BEDTRED HOOK & LOOP PLACEMENT



BEDRUG® CLEANING INFORMATION

The mildew resistant BedRug foam will not absorb liquids. The engineered polypropylene fiber top surface resists stains and deterioration from most acids, chemicals, gas and oils, etc. Therefore, by following the cleaning instructions below, your BedRug will remain serviceable for as long as you own your vehicle.

Cleaning your BedRug is easy:

1. A vacuum, broom, brush or compressed air can be used to remove dirt, grime, sand, mulch etc. Due to the fact that water will not harm the BedRug, pressure washing is also an effective way to clean a soiled BedRug.
2. Although most acids will not harm the BedRug, baking soda should be applied immediately to neutralize the acid to ensure the safety of the paint on the vehicle.
3. To clean tougher jobs such as gasoline, oil, chemicals, acid spills or leaks from your BedRug use detergent soap with degreaser and water, then rinse thoroughly. This detergent soap is used in most car wash locations with pressure washing equipment. The BedRug polypropylene closed-cell foam will not absorb water and the polypropylene fiber dries in minutes.

If you have additional questions, call BedRug Inc. customer service at 800-462-8435.

Retain this cleaning information with your vehicle owner's manual for future reference.

LIMITED WARRANTY

BedRug Inc. warrants BedRug® and BedTred™ products for Jeep vehicles for three years from the original date of purchase. Warranty is limited to the original purchaser and is not transferable. Product is warranted to be free from defects in materials and workmanship. The warranty is void if the product has been damaged by accident, unreasonable use, neglect, improper service/installation/removal, modifications, acts of God, normal wear and tear, or other causes not arising out of defective materials or workmanship. Consequential and incidental damages are not covered under this warranty. Warranty does not cover labor, the cost of shipping, or cost of returning the product for warranty service or inspection. The terms of this warranty may vary from state to state. You may have rights under specific state laws that differ from the terms of this warranty. Proof of purchase will be required for warranty service. Product should be cleaned before return. A return authorization number must be obtained prior to returning any product. For warranty instructions, returns, and packaging contact BedRug Inc. Customer Service at 800-462-8435.

Retain this warranty information with your vehicle owner's manual for future reference

PRODUCT REGISTRATION

Thank you for purchasing your BedRug product! We would appreciate it if you would take a few minutes to register your purchase. Registration allows us to provide, with your permission, important updates, service information, helpful hints or warranty service should you ever require technical support. BedRug offers the option of returning product registration forms electronically, rather than having to fill them out by hand. You can be assured that BedRug does not share or sell the information you provide. Save a copy of your sales receipt. Activate your warranty by registering your product online at <http://www.bedrug.com/customer-service/product-registration.html> or by scanning the QR code. You will need the 6-digit lot and date code found on the underside of the tailgate, see label example below.



Jeep Wrangler TJ Bedrug/BedTred Interior Installation Instructions



Congratulations on choosing the finest interior flooring kit available for your Jeep. The Bedrug/Bedtred material is mold and mildew resistant, easily cleaned with water & household cleaning chemicals and extremely resistant to most chemicals.

- **Kit Contents:** Driver side wheel well, passenger side wheel well, rear cargo area floor, tailgate piece, hook fasteners, and instruction sheet.
- **Tools needed:** Utility knife, soap, water, rubbing alcohol, and a T-30 torx bit.



PREPARATION

1. Read all instructions before beginning installation.
2. Remove old Jeep flooring material (if equipped).
3. Wash and dry the floor pan and wheel well areas thoroughly.
4. Cut the hook fasteners with tape backing to match the length of loop sewn on the underside of each BedRug piece. Place the hook onto each location. Do not remove the tape backing at this time. (Note: Cut the longest pieces first.) Refer to drawing on **Page 5**. For BedTred hook fastener installation; cut hook fasteners to length and install in locations notated on **Page 5**.

IMPORTANT: Jeep floor should be at least 68°F (20°C) for maximum adhesion. Clean all areas with rubbing alcohol before applying tape. When removing backing, do not touch adhesive. If both front and rear kits were purchased be sure to install the rear cargo area first.

INSTALLING CARGO AREA WHEEL WELLS

5. Tilt rear seat into up/forward position. Fit driver side wheel well piece into place, fitting around seat belt mount, roll bar, wiring, and rear door latch. **Note:** Like the factory carpet kit, there is a flap at the bottom of both wheel well pieces designed to roll onto the cargo floor. Cargo floor piece will overlap flap. See **Fig. 3**. Markings on back of the part indicate where slits or cutouts need to be made. Be sure to cut only markings necessary for your Jeep. (**Fig. 1** and **Fig. 2**) **Tip:** Removing the rear seat will make installing cargo area easier.



FIGURE 1:



FIGURE 2:

6. Next pull up bottom of side piece behind seat to access hook fastener. Clean surface with alcohol then remove the film backing and roll the part back into place. Firmly press the top surface to ensure adhesive attachment. (**Fig. 3** and **Fig. 4**)

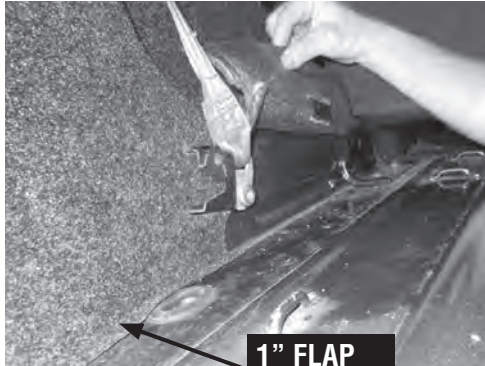


FIGURE 3:



FIGURE 4:

7. Now pull down the top of the wheel well piece to access the hook fastener. (**Fig. 5**) Clean the surface with alcohol then remove the film backing and roll the part back into place making sure to tuck under wiring harness where necessary. (**Fig. 6**) Firmly press the top surface to ensure adhesive attachment.



FIGURE 5:



FIGURE 6:

8. Now lift up on the front of the wheel well piece, clean surface with alcohol remove the tape backing and press firmly back into place. (**Fig. 7**) Repeat steps for the rear door opening. (**Fig. 8**)



FIGURE 7:



FIGURE 8:

9. Repeat steps 5 thru 8 for the passenger side wheel well. Note the cutout necessary on the passenger side only for the rear door sensor. (Fig. 9)



FIGURE 9:

INSTALLING CARGO AREA FLOOR

Note: For jeeps with a rear seat, trimming will be necessary to fit around seat mount and seat belt attachment points. There are score lines on the back of the part to use as a guide.

10. With the rear seat in the up position, or removed, place the floor piece into position. (Fig. 10)
Cut holes in center of floor piece if seat belts are present. Lift the floor piece from the rear and pull the seat belts thru the holes. (Fig. 11)



FIGURE 10:



FIGURE 11:

11. If tie downs are preferred to be accessible, cut holes and slits as desired using score lines on the underside of floor or cut out using your tie downs as a guide. (Fig. 12)
12. Now pull up floor piece from rear of vehicle to access the hook fastener. Clean surface with alcohol then remove the film backing from all of the locations behind the rear seat and roll the floor back into place. Firmly press the top surface to ensure adhesive attachment. (Fig. 13 and Fig. 14)

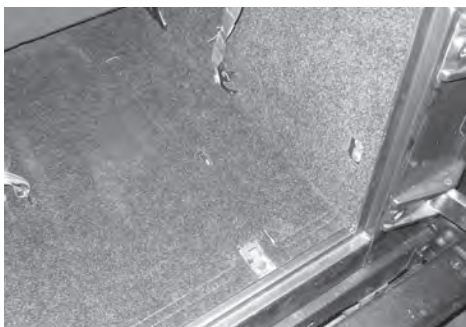


FIGURE 12:



FIGURE 13:



FIGURE 14:

13. Now repeat the process for the hook fastener in front of the rear seat where the two floor pieces meet. (Fig. 15)

Note: If both front and rear kits are being installed the floor piece in the rear passenger area should overlap the wheel well pieces and the rear floor piece.



FIGURE 15:

INSTALLING TAILGATE PIECE

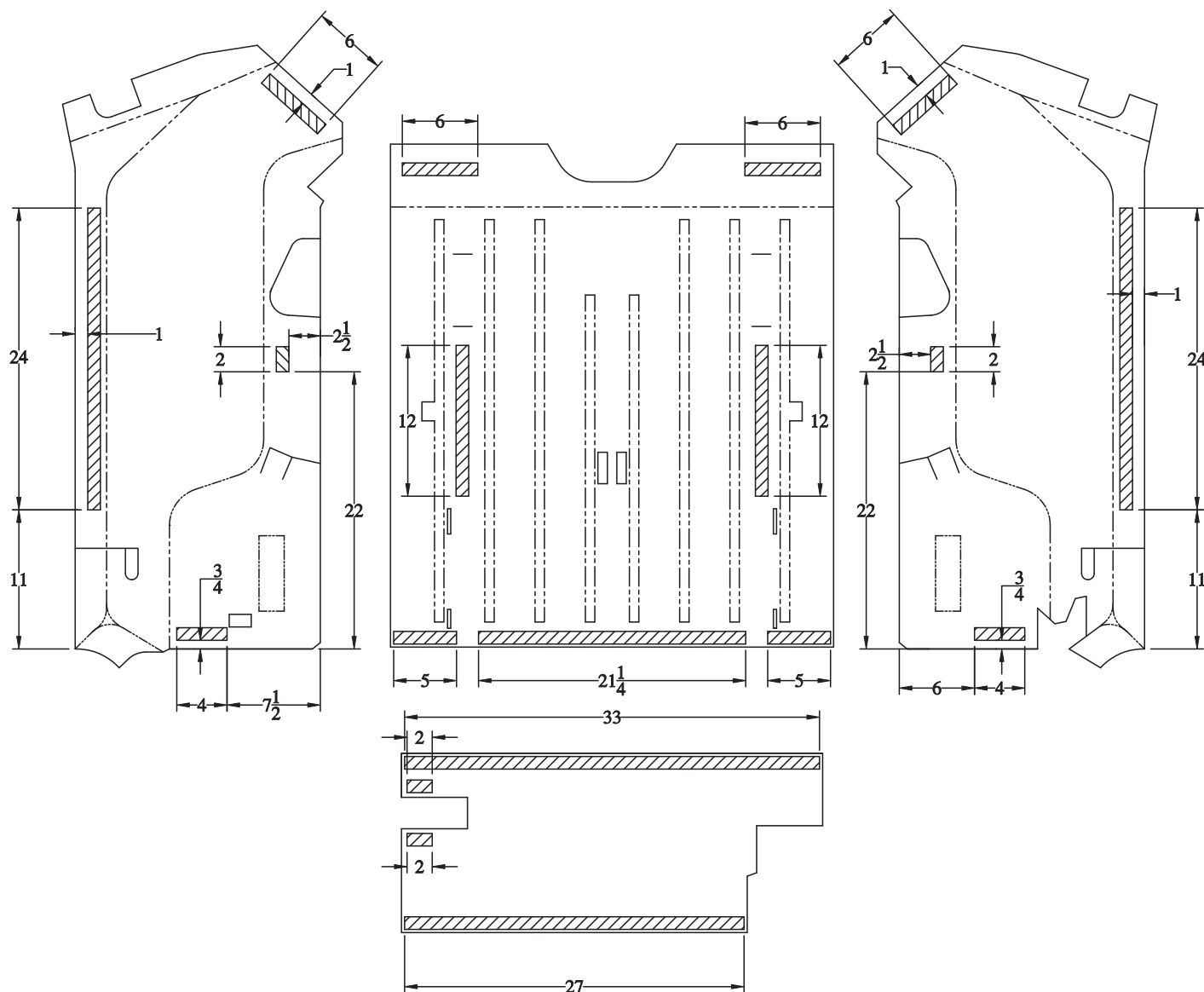
14. Remove the metal or plastic cap covering the door latch. Clean surface with alcohol then remove film backing from the tailgate piece and attach to the tailgate. Firmly rub entire surface to ensure good attachment. (Fig. 16) Reinstall the cap over the latch and the tailgate piece in the latch area.

Note: If the tailgate piece covers any screw holes, you will need to puncture holes thru the piece in order to reinstall screws for the latch cover.



FIGURE 16:

BEDTRED HOOK & LOOP PLACEMENT



Note: Cargo floor has high cycle loop fasteners pre-installed at the factory in locations noted on the drawing. Apply hook fasteners to these pre-installed loop fasteners.

BEDRUG® CLEANING INFORMATION

The mildew resistant BedRug foam will not absorb liquids. The engineered polypropylene fiber top surface resists stains and deterioration from most acids, chemicals, gas and oils, etc. Therefore, by following the cleaning instructions below, your BedRug will remain serviceable for as long as you own your vehicle.

Cleaning your BedRug is easy:

1. A vacuum, broom, brush or compressed air can be used to remove dirt, grime, sand, mulch etc. Due to the fact that water will not harm the BedRug, pressure washing is also an effective way to clean a soiled BedRug.
2. Although most acids will not harm the BedRug, baking soda should be applied immediately to neutralize the acid to ensure the safety of the paint on the vehicle.
3. To clean tougher jobs such as gasoline, oil, chemicals, acid spills or leaks from your BedRug use detergent soap with degreaser and water, then rinse thoroughly. This detergent soap is used in most car wash locations with pressure washing equipment. The BedRug polypropylene closed-cell foam will not absorb water and the polypropylene fiber dries in minutes.

If you have additional questions, call BedRug Inc. customer service at 800-462-8435.

Retain this cleaning information with your vehicle owner's manual for future reference.

LIMITED WARRANTY

BedRug Inc. warrants BedRug® and BedTred™ products for Jeep vehicles for three years from the original date of purchase. Warranty is limited to the original purchaser and is not transferable. Product is warranted to be free from defects in materials and workmanship. The warranty is void if the product has been damaged by accident, unreasonable use, neglect, improper service/installation/removal, modifications, acts of God, normal wear and tear, or other causes not arising out of defective materials or workmanship. Consequential and incidental damages are not covered under this warranty. Warranty does not cover labor, the cost of shipping, or cost of returning the product for warranty service or inspection. The terms of this warranty may vary from state to state. You may have rights under specific state laws that differ from the terms of this warranty. Proof of purchase will be required for warranty service. Product should be cleaned before return. A return authorization number must be obtained prior to returning any product. For warranty instructions, returns, and packaging contact BedRug Inc. Customer Service at 800-462-8435.

Retain this warranty information with your vehicle owner's manual for future reference

PRODUCT REGISTRATION

Thank you for purchasing your BedRug product! We would appreciate it if you would take a few minutes to register your purchase. Registration allows us to provide, with your permission, important updates, service information, helpful hints or warranty service should you ever require technical support. BedRug offers the option of returning product registration forms electronically, rather than having to fill them out by hand. You can be assured that BedRug does not share or sell the information you provide. Save a copy of your sales receipt. Activate your warranty by registering your product online at <http://www.bedrug.com/customer-service/product-registration.html> or by scanning the QR code. You will need the 6-digit lot and date code found on the underside of the tailgate, see label example below.

