



Installation Instructions

61098 Door Surrounds

4 Door Jeep JK - All

Included:
left upright
Right upright
Left front section
Right front section

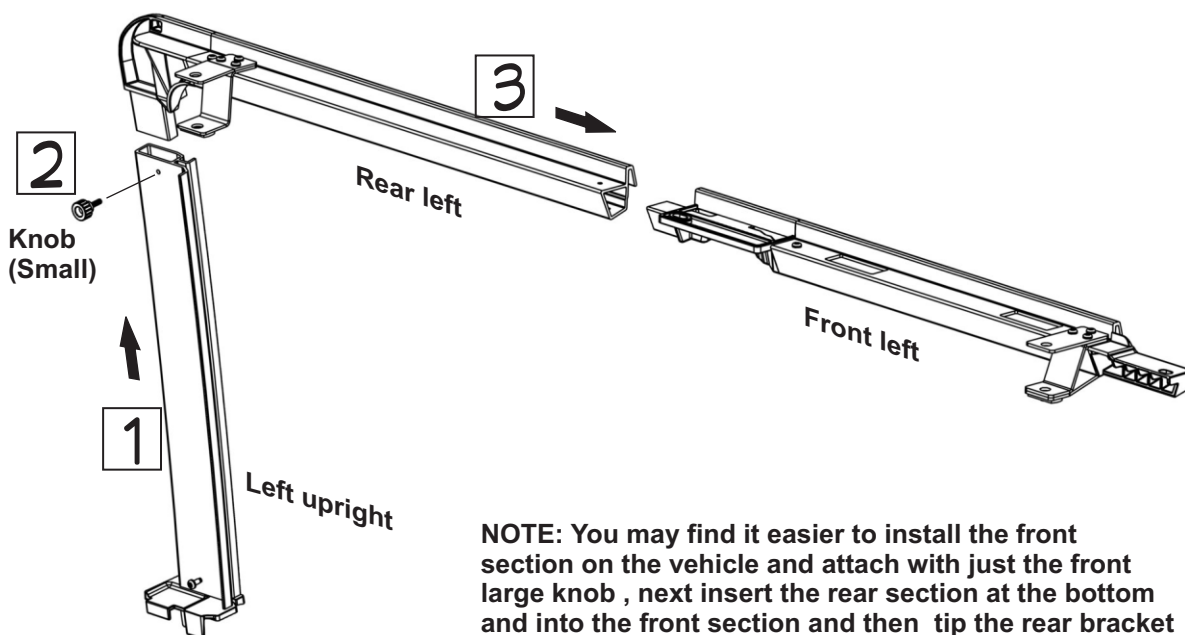
Left rear section
Right rear section
2 x large knob (short shaft)
4 x large knob (long shaft)
2 x small knob

PLEASE READ ALL INSTRUCTIONS AND BE SURE YOU HAVE A CLEAR UNDERSTANDING BEFORE BEGINNING THIS INSTALLATION

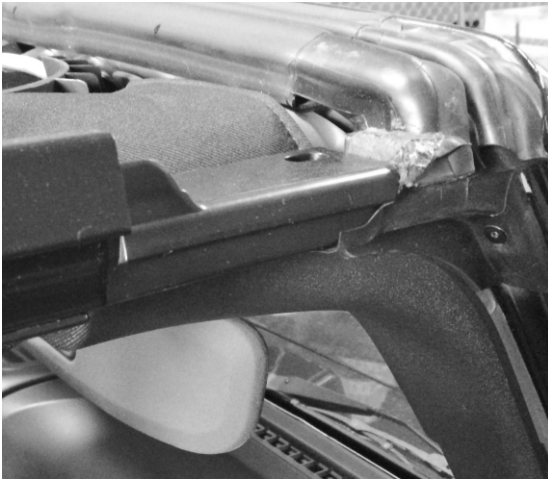
Overview

The door surrounds are intended to be used with the Rampage Frameless Top and Factory Replacement Tops in place of the factory door surrounds. They can be used with factory tops but may limit the functionality of some factory top features such as the folding front mechanisms. They have been designed to strengthen some of the weak areas of the factory door surrounds and provide a simple and sturdy mount specifically for our Rampage tops.

- 1) Insert left upright into left rear section and use small knob to lock the two parts together.
- 2) Insert the front left section onto the rear assembly from the previous step and install on vehicle.
- 3) Use the large knobs with the long shafts on the front and rear locations and the large knob with the short shaft in the middle to mount point.
- 4) Repeat installation for other side.



NOTE: You may find it easier to install the front section on the vehicle and attach with just the front large knob, next insert the rear section at the bottom and into the front section and then tip the rear bracket onto the roll bar. Now install the last two knobs (one long shaft one short).



NOTE: Pay close attention to the rubber gasket at the top of the windshield and how the front section inserts into it. The picture to the left shows how it should fit.

NOTE: Also be careful in the middle to make sure the rubber is correctly wrapped around the plastic center section before the center knob is installed. See pic to the right.



Warranty Information

Rampage products, Inc. warrants to the original purchaser of any step product it manufactures, that the product will be free of defects in material or workmanship for a period of 1 year from date of purchase. Such obligations under this warranty shall be limited to the repair or replacement, at Rampage products discretion, of any assembly or parts which, upon examination by Rampage products, Inc. proves to be defective. All defective items must be returned with proof of purchase to Rampage products, Inc., freight prepaid. This warranty does not cover damage resulting from abuse, misuse, alteration, accident or damage in transit. Rampage products obligations under this warranty are limited to the aforementioned repair or replacement of warranty defects for which the return authorization has been received during the warranty period, and Rampage products, Inc. shall not be liable for any incidental or consequential damages arising from breach of this or any implied warranty.

**Rampage Products, Corona, CA Phone: (951) 277-4949 Fax: (951) 277-2295
www.rampageproducts.com**