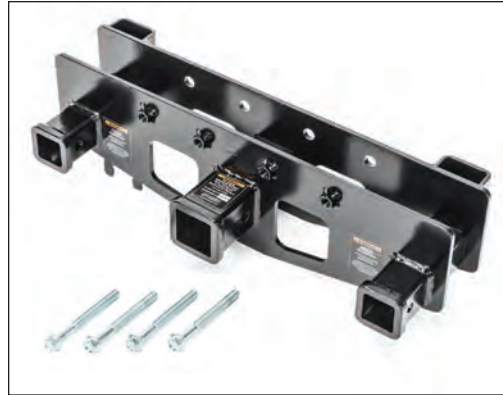


VersaHitch® 2" Receiver Hitch

**Installation Manual: for 2007-Current Jeep
Wrangler (JK) & Wrangler Unlimited (JKU) Vehicles**

#12015.1002



PARTS LIST:

2" VersaHitch® Receiver Hitch - QTY 1
M12 Bolts - QTY 4

REQUIRED TOOLS:

Safety Glasses
18mm Socket
Ratchet Driver
Torque Wrench

⚠ WARNING ⚠

TO REDUCE RISK OF SERIOUS INJURY OR PROPERTY DAMAGE: READ ALL SAFETY MESSAGES AND UNDERSTAND ALL INSTRUCTIONS AND PROCEDURE NOTICES BEFORE ATTEMPTING TO INSTALL OR USE THIS PRODUCT. FOLLOW ALL INSTRUCTIONS AND WARNINGS WITH PRODUCT & VEHICLE OWNERS MANUAL.

⚠ WARNING ⚠

REGARDING RECEIVERS: SEE PAGE 2 FOR URGENT RECEIVER CAPACITY WARNINGS. DO NOT ALLOW RECEIVER MOUNTED ACCESSORIES (BIKES, ETC.) TO BLOCK VEHICLE MIRRORS OR LIGHTS. READ AND UNDERSTAND ALL CAPACITY WARNINGS.

⚠ CAUTION ⚠

RISK OF EYE INJURY! SAFETY GLASSES MUST BE WORN AT ALL TIMES WHILE INSTALLING OR MAINTAINING THIS PRODUCT. TORQUE AND RECHECK FASTENERS AFTER 250 MILES AND FREQUENTLY THEREAFTER. INSPECT BUMPER, WINCH AND MOUNT BEFORE USE. DO NOT USE IF DAMAGED.

NOTICE

CHECK STATE AND LOCAL HIGHWAY SAFETY LAWS REGARDING PERMITTED BUMPER TYPES AND HEIGHTS.



A Few Words About Product Safety:

Your VersaHitch Receiver Hitch is intended to enhance the utility and enjoyment of your off road capable vehicle. Before installation, please take a moment to review the following safety information and installation

instructions. Important safety information is generally preceded by one of three signal words indicating the relative risk of injury.

The signal words mean:

| | |
|--------------------|---|
| ⚠ WARNING ⚠ | a hazardous situation which, if not avoided, could result in death or serious injury. You CAN be KILLED or SERIOUSLY HURT if you don't follow instructions. |
| ⚠ CAUTION ⚠ | a hazardous situation which, if not avoided, could result in minor or moderate injury. You CAN be moderately HURT and also may suffer property damage if you don't follow instructions. |
| NOTICE | Careful attention is required to this instruction or operation but does generally not relate to personal injury. Damage to your product or other property may result if you don't follow instructions. |

Before You Begin Installation:

Congratulations on your purchase of the Premium VersaHitch® for (2007 to current) Wrangler JK Vehicles. This version is specifically designed for this original equipment factory bumper.

at 800-745-6037 as soon as possible.

As tow hitches tend to be heavy, we suggest you get help for steps involving lifting, locating or holding the hitch during installation.

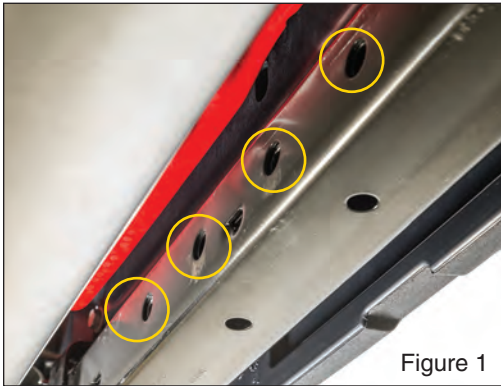
When unpacking, check to make sure all parts are included and not damaged due to shipping. If any part is missing or broken, please call Customer Service

Thank you again for your purchase and let's start the installation process.

| | |
|--------------------|--|
| ⚠ WARNING ⚠ | THIS CLASS II RECEIVER: 4 DOOR JK: MAX TOW WEIGHT 3500 LBS. MAX TONGUE WT. 300 LBS. 2 DOOR JK: MAX TOW WEIGHT 2000 LBS. MAX TONGUE WT. 200 LBS. |
| ⚠ WARNING ⚠ | TO REDUCE RISK OF SERIOUS INJURY OR PROPERTY DAMAGE: INSTALL ACCORDING TO INSTRUCTIONS. TORQUE AND RECHECK FASTENERS AFTER 250 MILES AND ROUTINELY THEREAFTER. INSPECT AND DO NOT USE RECEIVER/BUMPER IF DAMAGED. |
| ⚠ WARNING ⚠ | CONSULT & NEVER EXCEED LESSER OF VEHICLE, RECEIVER OR TRAILER MAXIMUM TOW OR WEIGHT RATINGS. CONSULT AND FOLLOW ALL LIMITATIONS & WARNINGS IN YOUR VEHICLE OWNERS MANUAL AND SAFE TOWING SUPPLEMENT. |
| ⚠ WARNING ⚠ | DO NOT USE VERSAHITCH® OUTBOARD ACCESSORY RECEIVERS FOR TOWING. THE TWO OUTBOARD ACCESSORY RECEIVERS ARE FOR USE ONLY WITH APPROVED VERSAHITCH ACCESSORIES. |
| | CHECK STATE AND LOCAL HIGHWAY SAFETY LAWS REGARDING PERMITTED BUMPER TYPES AND HEIGHTS. |



VersaHitch® Installation:



Put on safety glasses. Locate the four bolt holes in the rear cross member of your vehicle behind the Rear bumper. Install the VersaHitch® over the rear



cross member, then install the 4 supplied bolts through the hitch and rear cross member and thread them into the weld nuts on the VersaHitch®



NOTICE TORQUE BOLTS TO 80 FT. LBS WITH A TORQUE WRENCH

Torque the bolts to 80 ft.lbs. using an 18mm socket and a torque wrench. The Trailing wiring harness of your vehicle (if equipped) can be attached to the hole on the back side of the VersaHitch® using the Factory push pin fastener as shown in FIG4. The harness plug can be attached to the integrated bracket on the left of the VersaHitch® as shown in FIG5. Re-check all fasteners and confirm 80ft. lbs after the first 250 miles and routinely thereafter.



VersaHitch® Exclusive Three Year Limited Warranty

Your VersaHitch® branded accessories are covered by the following **Limited Warranty** provided exclusively by the VersaHitch® Division of Quadratic, Inc. 1028 Saunders Lane, West Chester PA 19380.

This **Limited Warranty** is the only warranty made in connection with your purchase. VersaHitch® neither assumes nor authorizes any vendor, retailer or other person or entity to assume for it any other obligation or liability in connection with this product or **Limited Warranty**.

What is Covered: Subject to the terms, exclusions and limitations herein and with respect only to VersaHitch® branded accessories first sold in the United States, VersaHitch® warrants to the initial retail purchaser only that your VersaHitch® accessory shall be free of defects in material and workmanship: **for a period of three (3) years from date of retail purchase.**

This **Limited Warranty** is not assignable and shall terminate upon sale of the vehicle upon which the VersaHitch® accessory is installed or other transfer third persons.

All other warranties are hereby disclaimed, except to the extent prohibited by applicable law in which case any implied warranty of merchantability or fitness for a particular purpose on this product is limited to 3 year from date of initial retail sale. VersaHitch® reserves the rights to: (a.) require invoice or other proof your accessory is within the terms of this **Limited Warranty** as a condition of warranty service and, (b.) make future revisions to this product and **Limited Warranty** without prior notice or obligation to upgrade your product.

What is Not Covered:

Your VersaHitch® **Limited Warranty** does not cover products or parts VersaHitch® determines to have been damaged by or subjected to: (a.) installation damage, alteration, modification, combination with other parts, failure to

maintain or improper repair or service, (b.) normal wear & tear, cosmetic damage or damage from moisture or water immersion, (c.) Acts of God, accidents, misuse, negligence, inadequate mounting or impact with vehicle(s), obstacles or other aspects of the environment, (d.) theft, vandalism or other intentional damage.

Remedy Limited to Repair/Replacement:
The exclusive remedy provided hereunder shall, upon VersaHitch® inspection and at VersaHitch's option, be either repair or replacement of product or parts (new or refurbished) covered under this Limited Warranty.

Customers requesting warranty consideration should first contact VersaHitch® to obtain a RGA number (610-701-3336). All labor, removal, shipping and installation costs are customer's responsibility.

Other Limitations - Exclusion of Damages - Your Rights Under State Law:

In consideration of the purchase price paid, neither VersaHitch® nor any independent VersaHitch® distributor/licensee are responsible for any time loss, rental costs, or for any incidental, consequential, punitive or other damages you may have or incur in connection with any part or product purchased. Your exclusive remedy hereunder for covered parts is repair/replacement as described above.

This **Limited Warranty** gives you specific rights. You may also have other rights that vary from state to state. For example, some states do not allow limitations of how long an implied warranty lasts and /or do not allow the exclusion or limitation of incidental or consequential damages, so the limitations and exclusions herein may not apply to you.

©VersaHitch® 2015. All Rights Reserved.
6.08.15 LTR Version

Instruction Booklet #12999.3024



US PATENT 8562013