



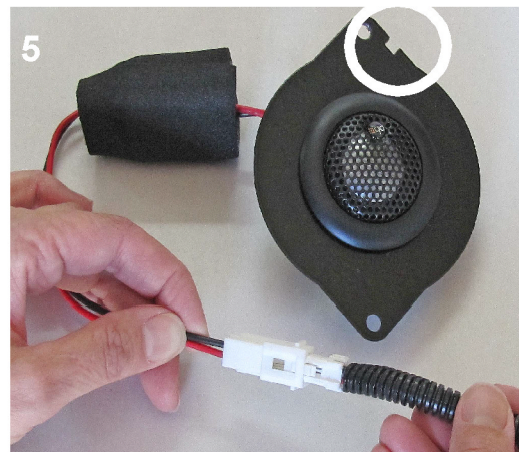
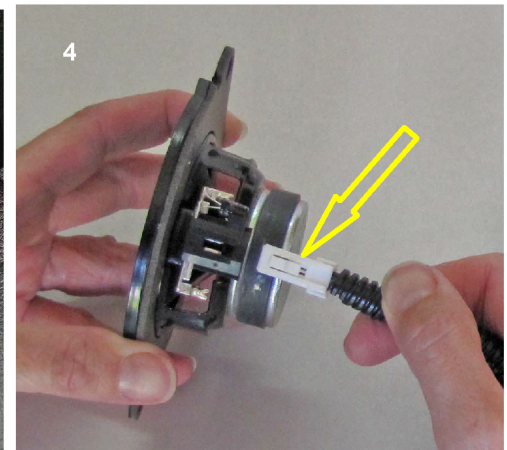
JK CUSTOM TWEETER UPGRADE KIT MODEL #JK-TWEET 2015



INSTALLATION INSTRUCTIONS

The instructions show installation on the passenger side.

1. Using a flat edge gently remove the tweeter cover.(fig. #2)
2. Using a 7mm socket or wrench, remove the two screws that secure the factory tweeter. Pay attention to the keyway location on the tweeter frame as shown by the white circle in fig. 3. The new tweeter frame has a keyway which will be aligned in the same position as shown in fig 5.
3. Press down on the tab to unplug the factory connector as shown by the yellow arrow in fig. 4.
4. Plug the new tweeter in to the factory connector as shown in fig. 5.
5. Carefully tuck the wires back down in the dash and install the new tweeter as shown in fig. 6 paying attention to the keyway.
6. Reinstall screws and cover.
7. Follow the same procedure for the driver side.



Congratulations, the installation is complete.

Questions or comments call
CFE Products and ask for Bob. 610-358-1886.