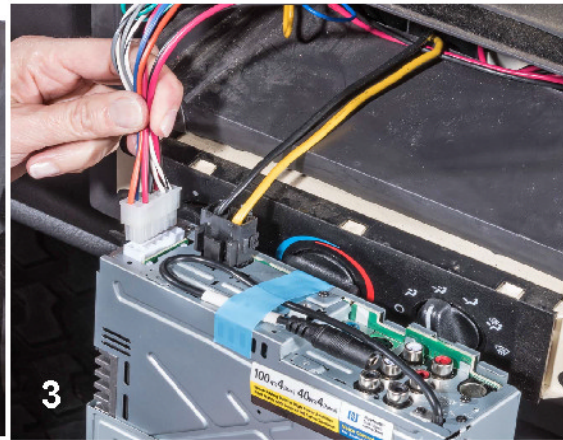
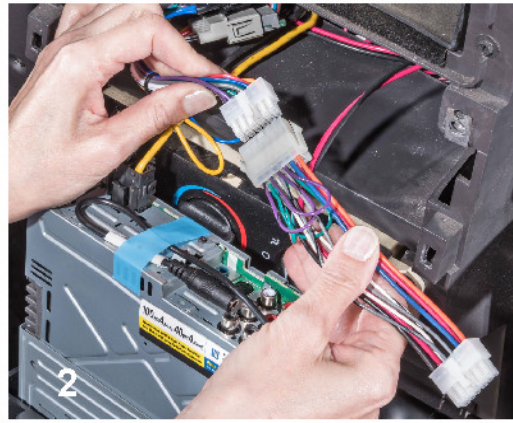
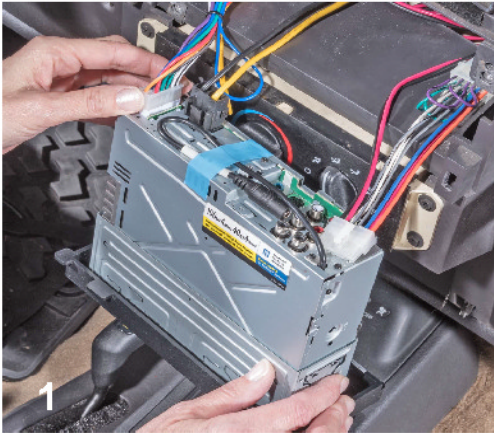


TJ COMP10S SUBWOOFERKIT / 1997 to 2006

with Plug & Play Wiring Harness

for Sony MEX-XB100BT High Power Radio

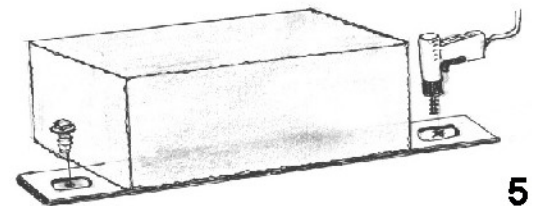


Installation Instructions

1. Remove the New Sony Radio from the Dash.
2. Un-plug the White Speaker Harness from the Radio as shown in pic #1.
3. Plug in the Plug & Play Subwoofer Harness included in the kit as shown in pic #2.
4. Plug the White Plug left back into the Radio as shown in pic #3.
5. Run the Red & Black Wire to the back of the Jeep. Down the Passenger side is the easiest way.
6. Bolt the Sub Box down using the Bolts for the Tie Down Hooks by the Tailgate as shown in pic #4. Or using the self tapping bolts supplied in the kit as shown in pic #5.
7. Connect the Red & Black Wires to the Sub Box
Red to Red Terminal & Black to Black Terminal.
8. Re-install radio.
9. You will need to put the Radio in the **Subwoofer Direct Mode** [see page 2].



NOTE: IF YOUR JEEP DOES NOT HAVE THE TWO BOLTS IN THE FLOOR TO MOUNT THE SUB, USE THE SELF TREADING BOLTS AND DRILL BIT SUPPLIED. YOU WILL HAVE TO MARK THE HOLES FIRST, REMOVE THE SUB AND THEN DRILL THE HOLES.



TJ COMP10S SUBWOOFER DIRECT MODE for Sony MEX-XB100BT

Sub Woofer Direct Mode

Press Menu Button -->

[SET SOUND] -->

[SET SW DIRECT] -->

[SET SW MODE] --> SELECT 1, 2 OR 3

[SET SW PHASE] --> 'IF NECESSARY'

[SET LPF FREQ] --> 'IF NECESSARY'

[SET LPF SLOPE] --> 'IF NECESSARY'

Press Menu Button --> To Exit

SUBW DIRECT (Subwoofer Direct Connection)

You can use the Subwoofer without a Power Amplifier when it is connected with the PLUG & PLAY Harness included with the Sub . The Radio must be in the Subwoofer Direct Mode. The Subwoofer Level Control will **NOT** adjust Subwoofer connected via Subwoofer Direct Mode. However, when you are finished setting up the Subwoofer Direct Mode, if you want more Bass you can use the Fader Control and Fade slightly to the Rear. This will increase the Subwoofer and decrease the other speakers in the Jeep to achieve an increase in Bass.

SUBW MODE (Subwoofer Mode)

Selects the Subwoofer mode: [1] 12dB/oct, [2] 24dB/oct, [3] 36dB/oct, [OFF].

* Recommended

This setting selects the main slope of the Subwoofer.

SUBW PHASE (Subwoofer Phase)

Selects the Subwoofer phase: [NORM], [REV]

* Recommended

SW POSITION (Subwoofer Position)

Selects the Subwoofer Position: [NEAR], [NORMAL], [FAR].

* Recommended

LPF FREQ (Low Pass Filter Frequency)

Selects the Subwoofer cut-off frequency: [50Hz], [60Hz], [80Hz], [100Hz], [120Hz].

Recommended

LPF SLOPE (Low Pass Filter Slope)

Selects the LPF Slope: [1] 12dB/oct, [2] 24dB/oct, [3] 36dB/oct.

