

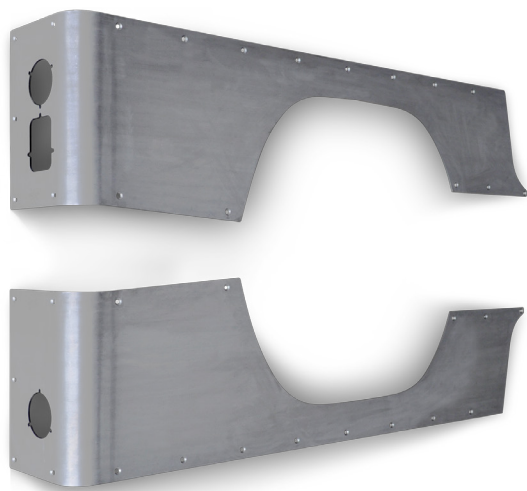


## CJ-8 Crusher Corners

**IMPORTANT:** Thank you for purchasing this Poison Spyder product. Please read through this entire document before proceeding with installation. If you are not confident in your mechanical skills, please seek the help of a professional to perform the installation. Check your packages immediately upon arrival to ensure that everything listed is included, and to check for damage during shipping. If anything is missing or damaged, or if you need technical assistance with any aspect of this installation, call Poison Spyder at (951) 849-5911 as soon as possible. This document last updated February 2016.

### APPLICATIONS

These installation instructions apply to the following Poison Spyder products:



- 12-04-010** CJ-8 Crusher Corners - Stock (Steel)  
**12-04-010-ALUM** CJ-8 Crusher Corners - Stock (Aluminum)  
**12-04-020** CJ-8 Crusher Corners - Standard (Steel)  
**12-04-020-ALUM** CJ-8 Crusher Corners - Standard (Aluminum)

### PARTS LIST

- (1) Driver Side Crusher Corner  
(1) Passenger Side Crusher Corner  
(1) CJ-8 Crusher Corner™ Hardware Kit  
PN: HWKIT-12-04-010 includes:  
(34) 3/8-16 X 1 SS Flat Head Cap Screw  
(34) 3/8-16 Gr8 Nylon Insert Lock Nut  
(34) 3/8 SAE Hardened Flat Washer  
(2) 3/8-16 Nutsert

### TOOLS NEEDED

- Primer & paint (unless Corners have already been painted or powder-coated)
- Fine tip felt marker (Sharpie® or similar)
- 7/32 hex key (Allen wrench) or hex socket
- 9/16 combination open end/box end wrench and/or socket with ratchet
- Drill motor with 3/8" & 17/32" (optional) drill bits

- 1" hole saw (optional) & 4-1/2" hole saw (optional if installing LED taillights)
- Auto-punch or center punch with hammer
- C-Clamps, welding clamps or similar, and/or a helper
- Various hand tools for R&R of fuel filler, license plate frame, taillights, flares, etc. (will vary by vehicle)

### VEHICLE PREPARATION

Do these steps for both sides:

1. **Be sure to start with** a clean vehicle. Installation is easiest with the hard or soft top removed. If there is any carpet along the inside wheel well, remove or pull it out of the way.
2. **Remove any plastic flares on** the rear of the vehicle. Remove the OE taillights.
3. **Remove the gas cap and** plastic gas filler bezel (reinstall gas cap at this time).
4. **If there are any license** plate brackets, remove them at this time.

Notes:

- Some early CJ's with OE roll bars have bolts that run through the side of the tub. These will need to be removed at this time (new holes will need to be re-drilled through the roll bar plate).
- If you are welding the Crusher Flares to the Crusher Corner, weld them PRIOR to painting/powder coating the Crusher Corners or installing them on the vehicle.

### CRUSHER CORNERS INSTALLATION

Do these steps for both sides

1. **Park vehicle on a level** surface and set the emergency brake. Wear eye protection beyond this point.
2. **Position Crusher Corner into place** on the rear corner of the Jeep and check for proper fitment.
3. **Apply masking tape to the** Jeep's body sheet metal around the edges of the area that will be covered by the Crusher Corner. This is simply to protect the paint during these steps and will be removed prior to final installation. It is not necessary to cover the entire area with tape, just the areas around the edges where the edge of the

Crusher Corner is likely to contact the sheet metal either intentionally or accidentally.

4. **Clamp the Crusher Corner** to the body using either a C-clamp or similar device (double check all mounting positions for correct alignment).
5. **Check for proper tailgate clearance** and operation.
6. **Using a sharpie marker, mark** all of the 3/8" mounting holes along the side and back of the Crusher Corner. Mark the LED tail light hole if applicable.
7. **Using a center punch and** a medium sized hammer, punch the center of the marked hole.
8. **Remove the clamps and remove** the Crusher Corner from the Jeep. Paint or powder-coat the Crusher Corner before final installation.
9. **Check carefully for any obstructions/wires** on the inside of the Jeep where the holes are to be drilled.
10. **Use a sharp 3/8" drill** bit to drill out the holes that were previously marked. Be sure to remove any metal debris or burrs from around the holes.
11. **On driver/passenger bottom rear mounting** hole closest to tailgate, an access hole will need to be drilled by drilling all the way through the tub. Then, from inside the tub, use a 1" hole saw centered on the previously drilled through-hole. The resulting 1" hole provides access to the lock nut that will be installed there. Spray exposed bare metal with clear-coat. A CJ7 rubber body plug or generic 1" rubber plug from the hardware store can be used to plug the hole after installation is complete.

*OPTIONAL: If desired, rather than cutting the 1" access hole you may install the supplied 3/8" nut-serts in these locations. Only use the supplied nut-serts if you are familiar with how to properly install them. They will require a 17/32" drill bit and a Nut-Sert Installation Tool. Note that we recommend using a professional Nut-sert install tool such as the "Marson™ Giant Threadsetter", if one is available. If a proper nut-sert install tool is not available, a make-shift one may be fashioned using a hex bolt, oversized nut and washers, as shown in the "Nut-Sert Installation Tool Instructions" PDF file which may be downloaded from the Poison Spyder website Tech Library section.*

12. **If installing the LED taillights,** cut out the hole using a 4.5" hole saw or pneumatic body saw. Be sure to check for wiring behind the sheet metal prior to cutting. On CJ8's with LED's the horizontal portion of the inner wheel well will need to be trimmed. Spray the exposed cut edges with clear-coat to prevent rust.
13. **Using the supplied hardware, re-install** the Crusher Corner into place. Loosely install flat head cap screw, flat washer (on the back side) and lock nut. Do not tighten hardware at this time (allow the Crusher Corner to "float" until all hardware is loosely installed). Once all

hardware is in place, carefully align the Crusher Corner into place, then tighten all hardware using the 7/32 hex key and 9/16 wrench.

14. **If installing LED taillights, continue** with Poison Spyder's separate instruction sheet that came with your LED taillights (if purchased through Poison Spyder) or may be downloaded in PDF form from the Tech Library section of our website.
15. **Remove the protective masking tape** that was applied at the beginning of these steps.
16. **Re-install the now-painted or powder** coated Crusher Corners (make sure paint is dry before installing).
17. **Re-install any OE pieces that** will be re-used (flares, gas filler bezel, license plate bracket or OE taillights).

*Congatulations! You have completed installation of your Poison Spyder Crusher Corners.*