



# Installation Instructions

Part No. **2614**

Product: Running Boards

Application:

Jeep GC 2011 – 2020 all [Except Summit](#)

Dodge Durango 2011+

Level of Difficulty: 1 2 3 4 5

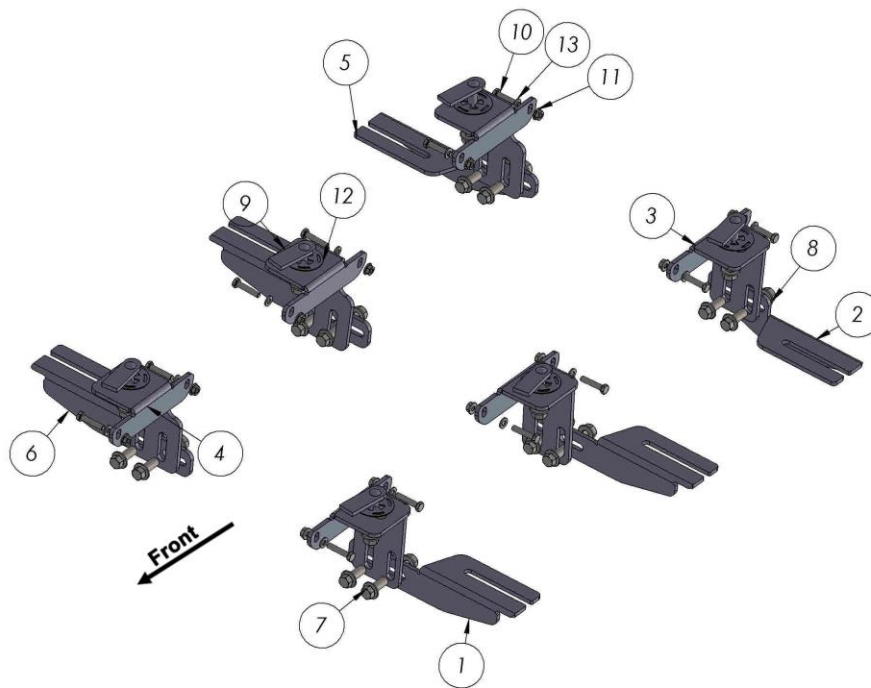
Installation Time: 60 Min

REV 3 01/23/20

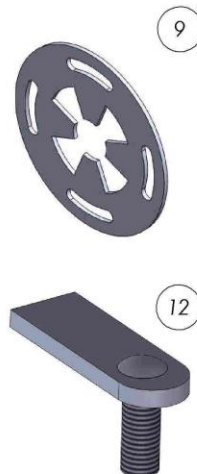
Hardware	Torque Specifications
M6 Bolt	3 ft-lbs.
M8 Bolt	7 ft-lbs.
M10 Bolt	16 ft-lbs.
M12 Bolt	28 ft-lbs.

**ATTENTION:** Use correct torque settings to avoid damaging the running boards and or mounting brackets. Failure to do so will void your warranty.

If you have any questions please contact our technical team at 1-866-717-6645



ITEM	PART NAME	QTY
1	2614850FOC0 DRIVER-PASSENGER	2
2	2614850B0 DRIVER	1
3	2614850FCB0 DRIVER	3
4	2614850FCB0 PASSENGER	3
5	2614850B0 PASSENGER	1
6	2614850FOC0 PASSENGER - DRIVER	2
7	DIN 6921 FLANGEBOLT M10 x 25	12
8	DIN 6923 FLANGE NUT M10	18
9	HTC 230 - M10x25(5x20x60)	6
10	DIN 6921 FLANGE BOLT M6 x 30	12
11	DIN 6923 FLANGE NUT M6	12
12	HTC 269 CLIPS / KLIPS (M10)	6





# Installation Instructions

**Part No. 2614**

**Product: Running Boards**

**Application:**

**Jeep GC 2011 – 2020 Summit**

**Level of Difficulty: 1 2 3 4 5**

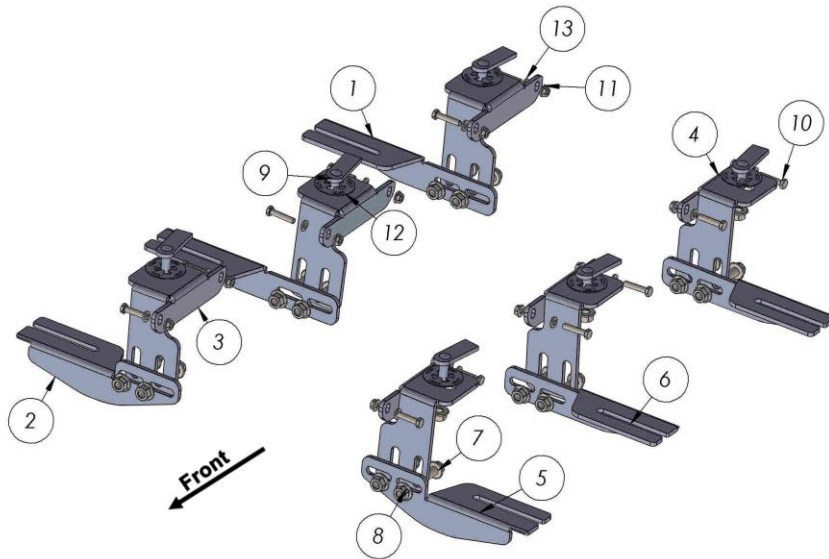
**Installation Time: 60 Min**

REV 3 01/23/20

Hardware	Torque Specifications
M6 Bolt	3 ft-lbs.
M8 Bolt	7 ft-lbs.
M10 Bolt	16 ft-lbs.
M12 Bolt	28 ft-lbs.

**ATTENTION: Use correct torque settings to avoid damaging the running boards and or mounting brackets. Failure to do so will void your warranty.**

**If you have any questions please contact our technical team at 1-866-717-6645**



ITEM	PART NAME	QTY
1	2614850F0C0 PASSENGER	2
2	2614850B0 PASSENGER	1
3	2614850FCB0 PASSENGER	3
4	2614850FCB0 DRIVER	3
5	2614850B0 DRIVER	1
6	2614850F0C0 DRIVER	2
7	DIN 6921 FLANGE BOLT M10 x25	12
8	DIN 6923 FLANGENUT M10	18
9	HTC 230 - M10x25(5x20x60)	6
10	DIN 6921 FLANGE BOLT M6 x 30	12
11	DIN 6923 FLANGE NUT M6	12
12	HTC 269 CLIPS / KLIPS (M10)	6



# Installation Instructions 2614 Bracket Kit

Video  
Installation  
Instruction:



**NOTE:** Jeep Grand Cherokee models visible gap due to body shape of the vehicle, if not sure stop before installing and visit [www.Romik.com](http://www.Romik.com) to review images

**Step 1:** Locate front mounting locations and hardware as per 1<sup>st</sup> page of this installation manual Dodge Durango models and all Jeep GC models. For Summit models please pay attention to step 4

**Step 2:** Remove plug #2 starting from front to back see Figure 1

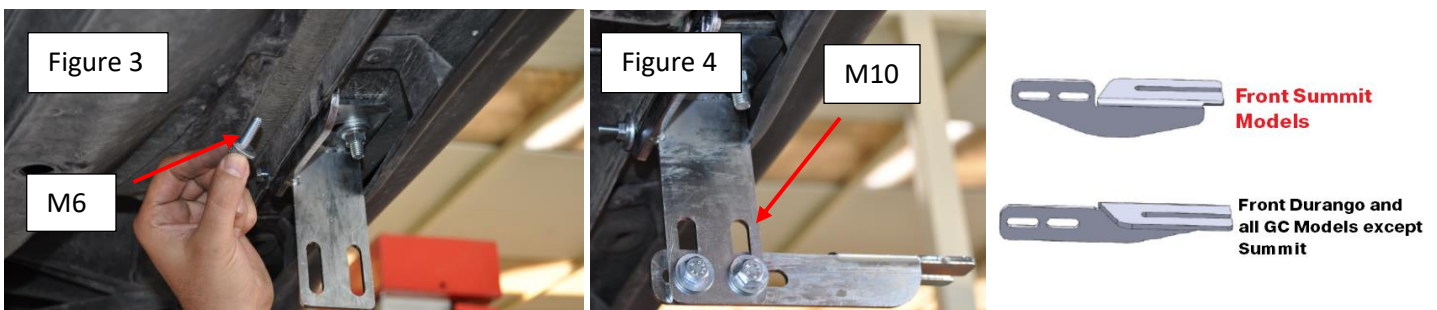


**Step 3:** Install provided HTC 230 as shown Figure 2



**Step 4:** Install bracket top part using supplied M6 hardware Figure 3.

**Step 5:** Install bracket lower portion using supplied M10 hardware Figure 4. **Note for Summit models front bracket position is very important.**



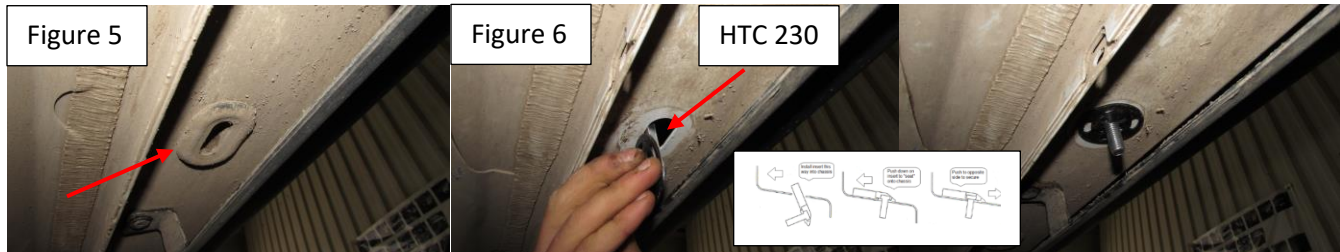
# Installation Instructions 2614 Bracket Kit

Video  
Installation  
Instruction:



**Step 6:** Locate middle bracket install are and remove rubber plug #3 Figure 5.

**Step 7:** Install supplied HTC 230 as shown Figure 6.



**Step 8:** Install bracket top part using supplied M6 hardware Figure 7.

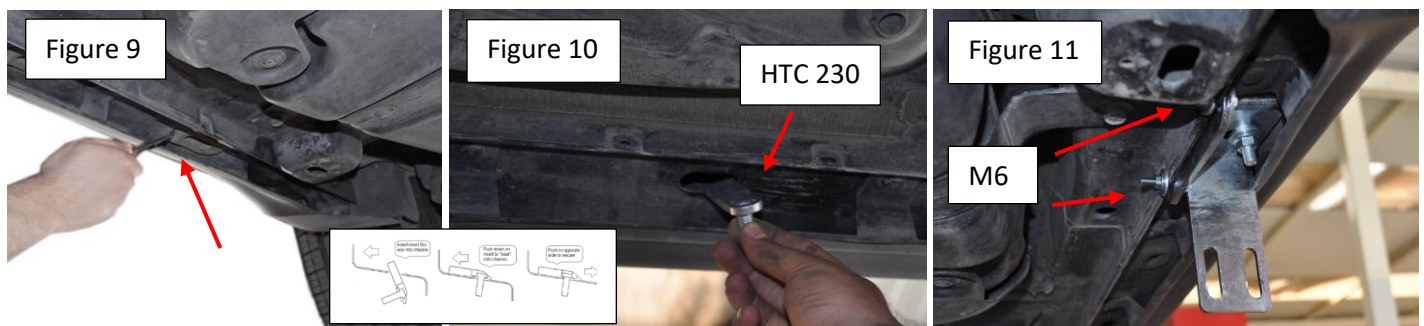
**Step 9:** Install bracket lower portion using supplied M10 hardware Figure 8.



**Step 9:** Locate rear bracket install are and remove rubber plug #5 Figure 9.

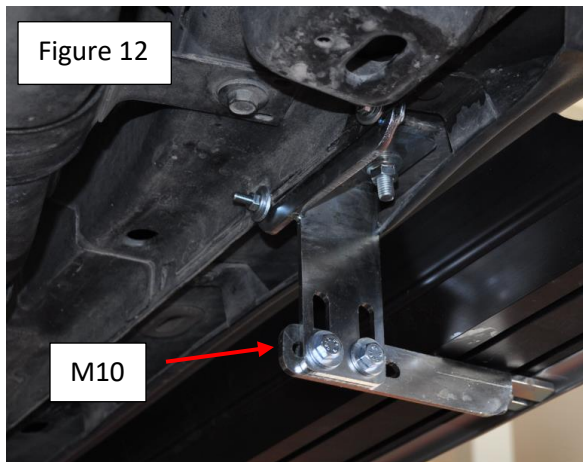
Step 10: Install supplied HTC 230 as shown Figure 10.

**Step 11:** Install bracket top part using supplied M6 hardware Figure 11.

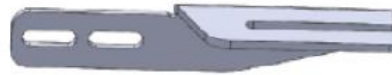


# Installation Instructions 2614 Bracket Kit

**Step 12:** Install bracket lower portion using supplied M10 hardware Figure 12.



**Rear Durango and all  
GC Models except  
Summit.**



**Rear Summit Models**

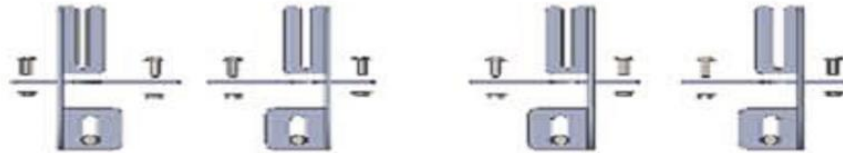
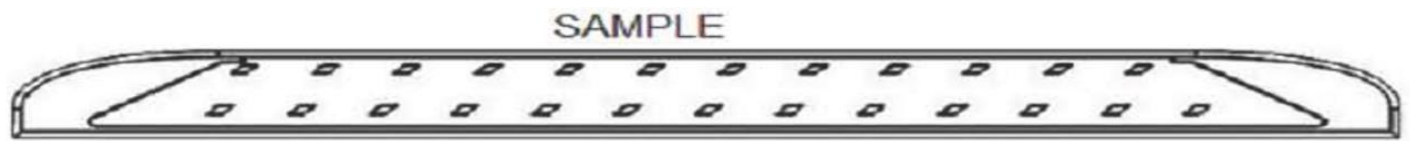
**Step 13:** Proceed to last page of this manual for running board install instructions and torque values

**NOTE: We recommend that you place a level on top of the running boards to assist you before finalizing the installation.**

For Technical support please call our team at 1-866-717-6645 and one of our experts will assist you with this installation.

***Thank you for choosing Romik.***

# Running Board Installation Instructions



**RAL / RB2 / REC / RCV / RZR**



**ROB / ROF / RPD**

- 1) Flip your Romik running boards onto a flat surface, make sure to place the running boards on a towel or cardboard in order to protect the surface Figure 1.
- 2) Loosen the M8 bolts on back of your running boards Figure 2. Depending on your model there will be either 6 or 8 bolts installed per side.
- 3) Once your brackets have been installed, place the running board onto the brackets as shown on Figure 3.
- 4) Adjust running boards, centering on vehicle. Hand tight M8 hardware on running boards.
- 5) Follow the torque procedures, torque M8 hardware to **7 ft-lbs** using a torque wrench.
- 6) Cleaning and maintaining your running boards is important, apply a light coat of a quality carnauba wax at least 2X per year. Wash often with mild soap and make sure to remove all soap residue. Many car automatic carwashes use a strong soap, make sure to use enough water to remove all residue.
- 7) Register your products at [www.Romik.com/contact/productregistration](http://www.Romik.com/contact/productregistration)
- 8) Warranty information at [www.Romik.com/warranty](http://www.Romik.com/warranty)