

INSTALLATION MANUAL

PRODUCT: FRONT ALUMINUM FENDER FLARES

MODEL: JEEP WRANGLER JL (2018 - ON),
GLADIATOR JT (2020 - ON),

PART NO: 2D.2719.1



CAUTION!

To reduce the risk of serious injury or damage, please read and understand all instructions and procedures before attempting to install or use this product.

Safety glasses must be worn at all times during installation or maintenance of this product.

Ensure all mounting bolts are tensioned after 600 miles (1000 kms) and periodically there after.

Do not use damaged product or hardware.

FRONT FENDER FLARES



Part number: 2D.2719.1

Suited to vehicle: JEEP WRANGLER JL (2018 - ON)
GLADIATOR JT (2020 - ON)

Material: Aluminum



Compatibility: 2D.2729.1 RIVAL FRONT ALUMINUM INNER FENDER LINERS FOR
JEEP WRANGLER JL. JT (2018 - ON)

SAFETY NOTICE

- * The RIVAL Fender Flares are designed to complement the use and design of the specified vehicle under conditions specified by the vehicle manufacturer.
- * While driving the vehicle at any speed, collision with any other vehicle, animal or object must always be avoided.
- * Following any collision with any other vehicle, animal or object, the RIVAL Fender Flares and the vehicle must be inspected by a specialized or suitably qualified vehicle repairer for possible damage to the components and assemblies in order to confirm suitability for further use of the vehicle.
- * It is strongly recommended that you do not operate a vehicle with a damaged fender flares or its components. In the case of damage, please contact the nearest RIVAL dealer. Vehicle, or where the fender flares has been damaged, is extremely dangerous and must be avoided at all cost.
- * The operation of a vehicle where the fender flares is not properly attached and fastened to the vehicle, or where the fender flares has been damaged, is extremely dangerous and must be avoided at all cost.
- * It is recommended that you carry out regular inspections of all fender flares elements such as all bolts, wires, connectors.

INSTALLATION NOTICE

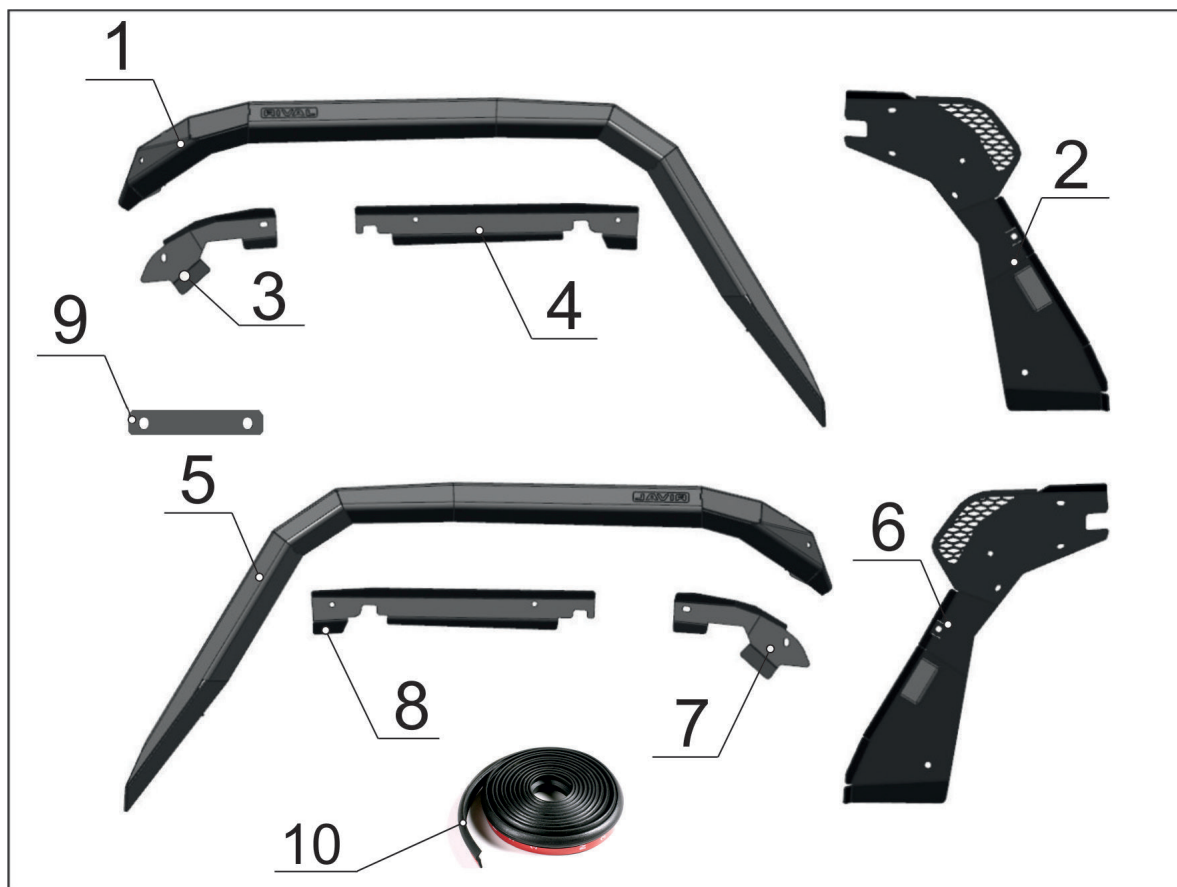
- * The RIVAL Fender Flares must be mounted and affixed to the vehicle according to this installation manual and the use of personal safety equipment is highly recommended.
- * Do not install this fender flares on vehicle models other than those allowed in this manual.
- * Check state and local highway safety laws regarding permitted fender flares types and heights.

REQUIRED TOOLS

- * Basic tool kit
- * Torque wrench
- * Crosspoint and flat head screwdriver

TORQUE SETTING

- * M6 - 9 N·m (6.6 lb/ft)
- * M8 - 18 N·m (13.2 lb/ft)



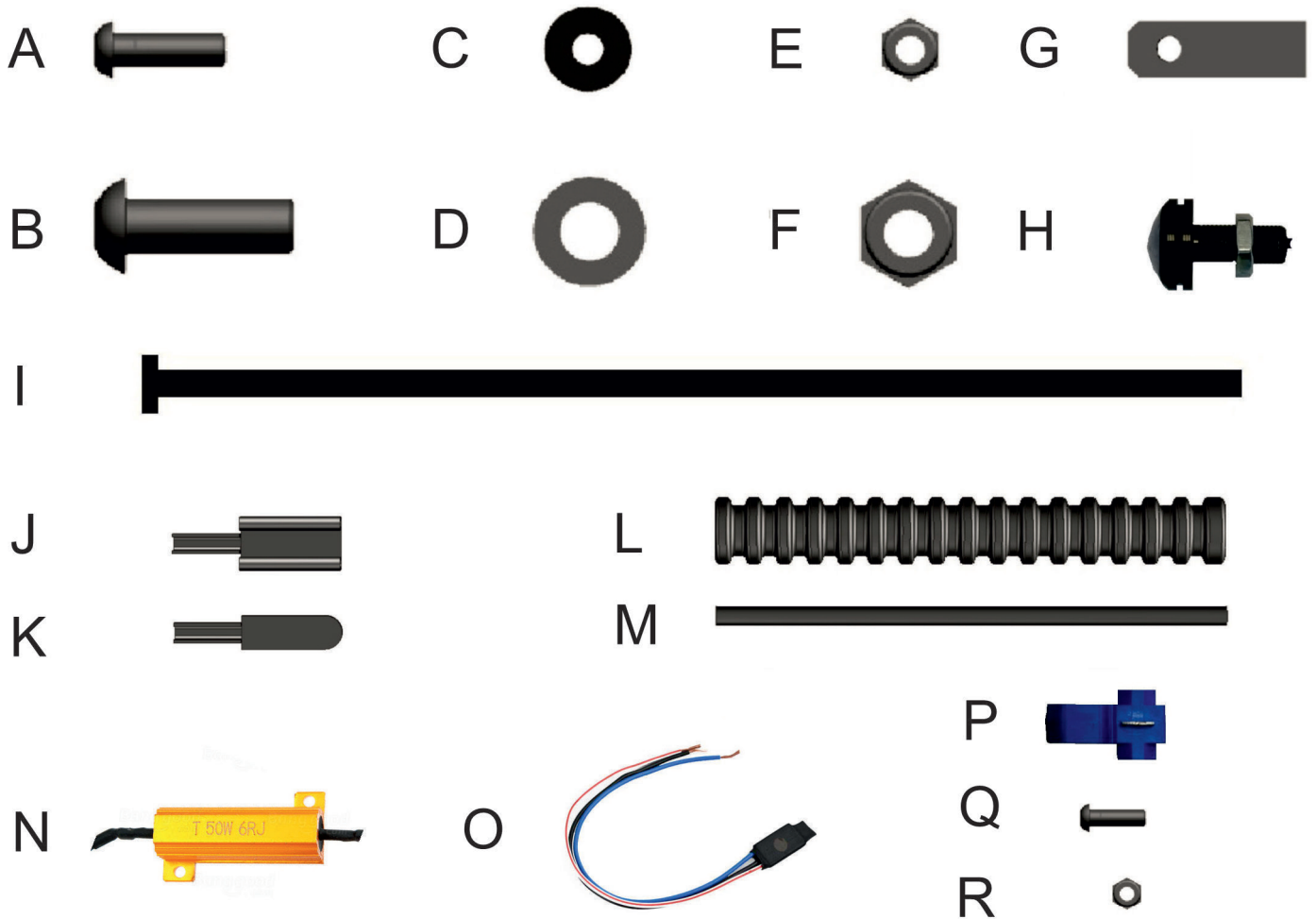
- 1. Left Fender (driver's side)..... Qty 1
- 2. Left fender bracket (driver's side)..... Qty 1
- 3. Left front body bracket (driver's side)..... Qty 1
- 4. Left middle body bracket (driver's side)..... Qty 1
- 5. Right Fender (passenger's side)..... Qty 1
- 6. Right fender bracket (passenger's side)..... Qty 1
- 7. Right front facia bracket (passenger's side)..... Qty 1
- 8. Right middle facia bracket (passenger's side)..... Qty 1
- 9. Insert nut M6..... Qty 2
- 10. Weatherstrip..... Qty 1

PASSENGER'S SIDE



DRIVER'S SIDE

PARTS LISTING



A. Screw M6x20.....	Qty 20	J. Female connector.....	Qty 4
B. Srew M8x20	Qty 6	K. Male connector.....	Qty 4
C. Penny washer 6.....	Qty 24	L. Corrugated pipe.....	Qty 2
D. Washer 8.....	Qty 12	M. Heat shrink tube.....	Qty 10
E. Nut M6.....	Qty 4	N. Resistor.....	Qty 2
F. Nut M8.....	Qty 6	O. Convertor	Qty 2
G. Insert nut M6 with cable.....	Qty 8	P. Wire connector.....	Qty 4
H. Blink light.....	Qty 2	Q . Screw M3.....	Qty 4
I. Cable tie.....	Qty 8	R. Nut M3.....	Qty 4



Fig. 1

1. Open the hood. Disconnect the negative battery terminal cable.



Fig. 2

2. On driver's side, unscrew 4 screws holding OE fender.



Fig. 3

3. Remove plastic push clips.



Fig. 4

4. Carefully push off OE fender by pulling fender.
* Do not remove fender. You have risk to damage wiring harness.



Fig. 5

5. Disconnect the wiring.



Fig. 6

6. Carefully remove OE fender with inner liners.

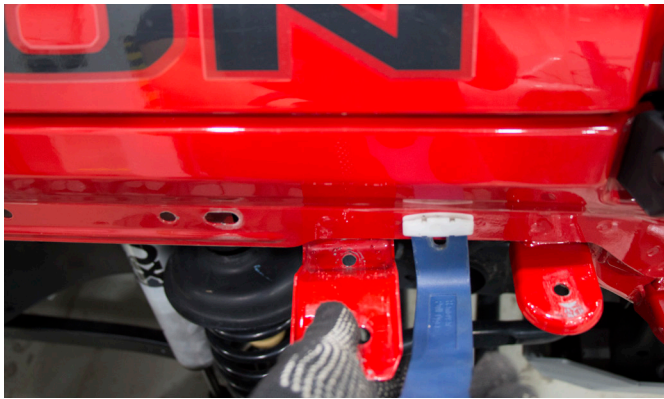


Fig. 7

7. Remove plastic push clips.



Fig. 8

8. Remove plastic overlay.



Fig. 9

9. Dispart OE inner liner and OE fender by unscrewing 1 screw and 7 plastic push clips.

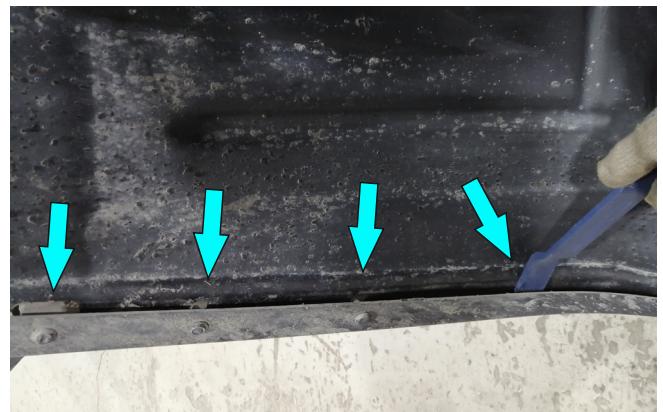


Fig. 10



Fig. 11

10. Remove 2 plastic push clips in the rear part of the vehicles.

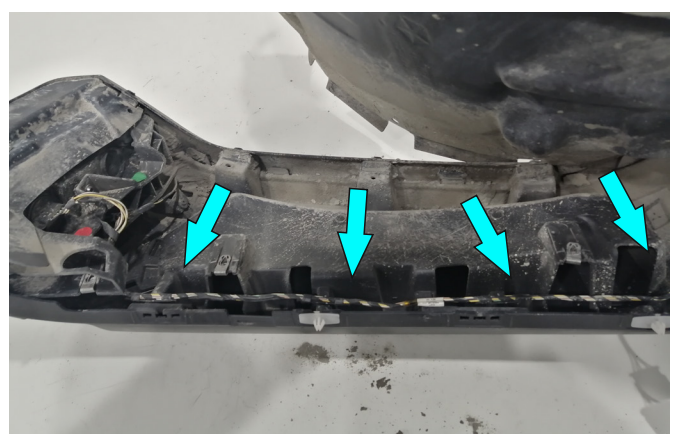


Fig. 12

11. Uninstall wiring by removing 4 plastic push clips.



Fig. 13

12. Remove wiring cup from the blink light. Disconnect wiring plug that connect with light and remove wiring from the light. Disconnect terminal of additional light.



Fig. 14

13. Remove wiring from the OE fender. Cut wiring at 22 inch (550mm) at wiring plug.



Fig. 15

14. Install blink light (item H) onto the fender.

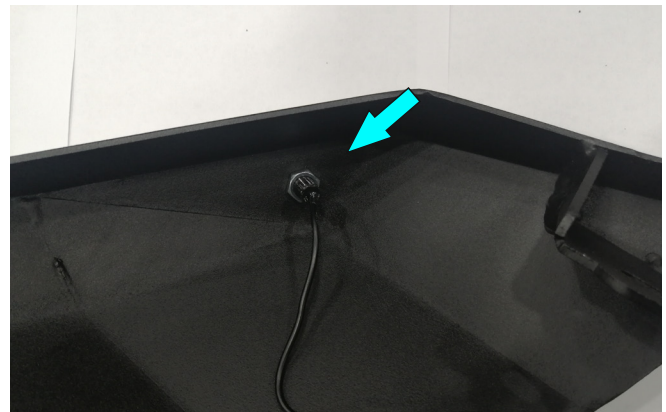


Fig. 16

15. Fix blink lights (item H) using nut M10 included in blink lights hardware.

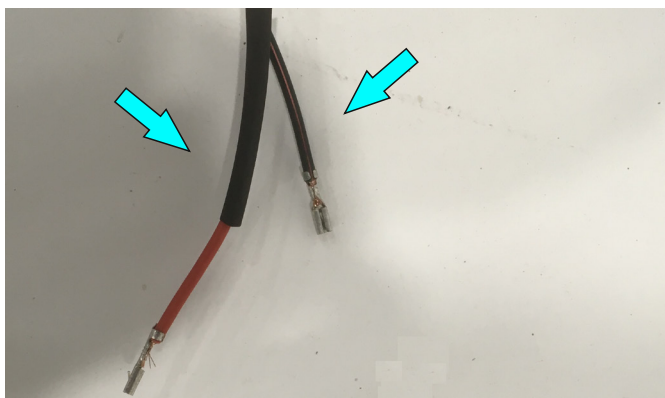


Fig. 17

16. Put heat shrink tube (item M) in blink light wiring.

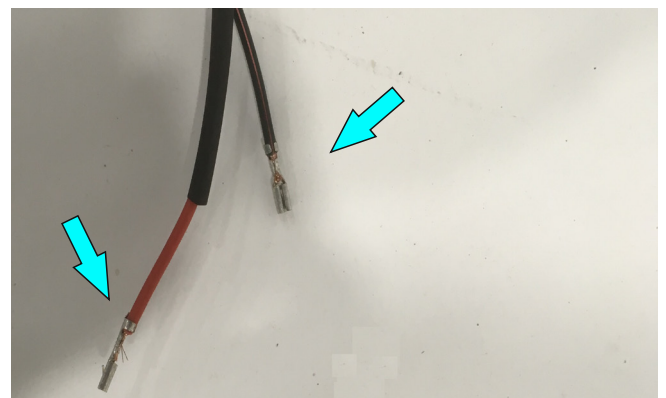


Fig. 18

17. Crimp terminals (item J) on black and red wiring of the blink light.

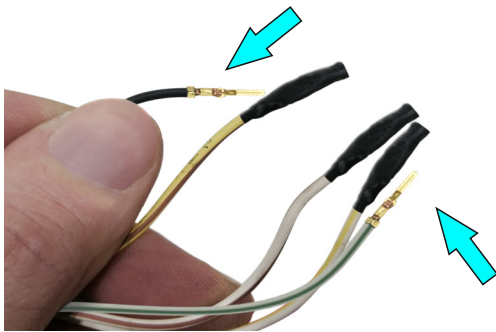


Fig. 19

18. Crimp terminals (item K) on black and white with green line wiring.

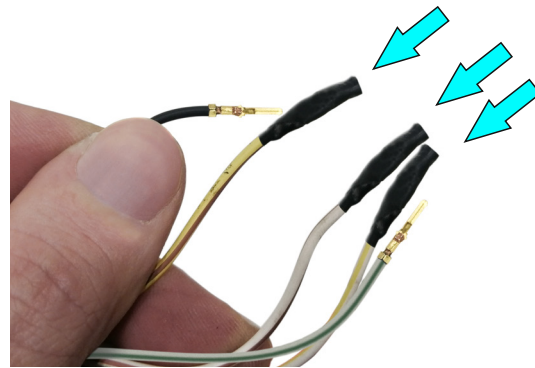


Fig. 20

19. Tape the wiring using heat shrink tube (item M): yellow with brown line, white with brown line, white with yellow line.

If your JL have incandescent lights, then follow steps 20-24, 29. If your JL have LED lights, then follow steps 25-29.

Blink lights installation for incandescent lights



Fig. 21

20. If your Jeep has incandescent lights, then follow steps 21-24.

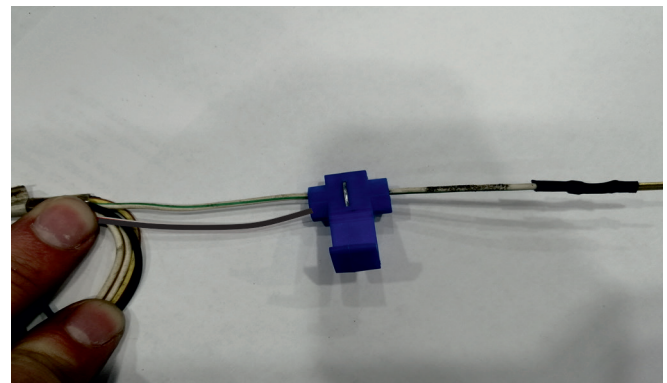


Fig. 22

21. Connect resistor (item N) to OE wiring, using wire connectors (item P) as shown on scheme step 22.

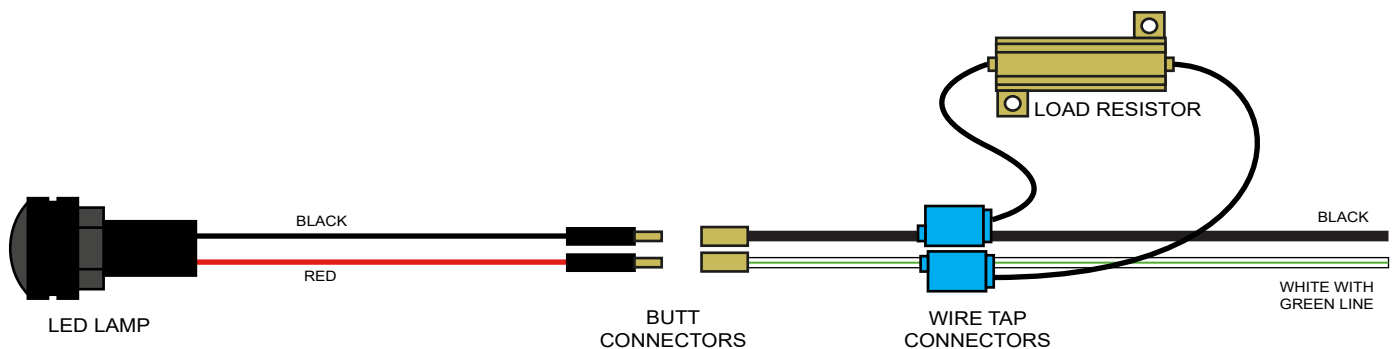


Fig. 23

22. Blink lights connection scheme for incandescent lights (fig.23).



Fig. 24

23. Fix connectors and tape the wiring using heat shrink tube (item M).

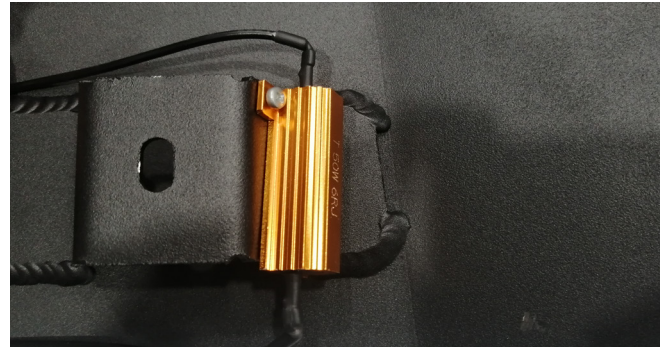


Fig. 25

24. Install resistor on fender, using screws M3 (item Q) and nuts M3 (item R), as shown in fig.25.

***Tighten hardware after that.**

Blink lights installation for LED lights



Fig. 26

25. If your Jeep has LED lights, then follow steps 26-28.

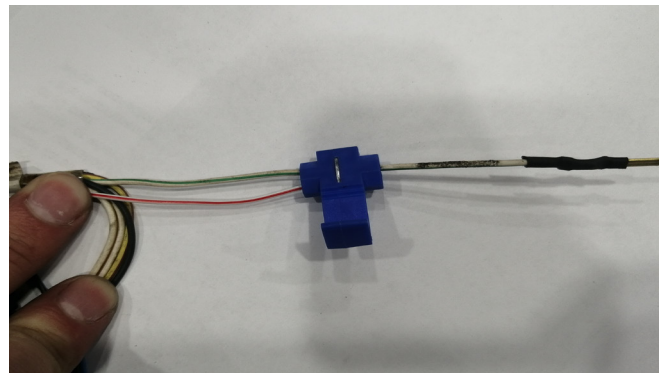


Fig. 27

26. Connect converter (item O) to OE wiring, using wire connectors (item P) as shown on scheme step 27.

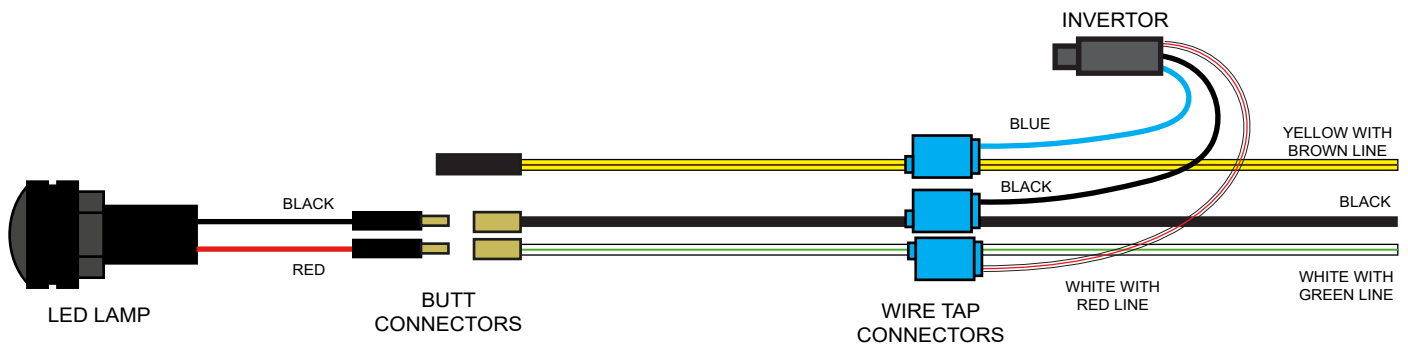


Fig. 28

27. Blink lights connection scheme for LED lights (fig.28).



Fig. 29

28. Fix connectors and tape the wiring using heat shrink tube (item M).



Fig. 30

29. Place wiring into corrugated pipe (item L).

Weatherstrip installation



Fig. 31

30. Cut weatherstrip (item 10) in the middle, on 2 equal parts.

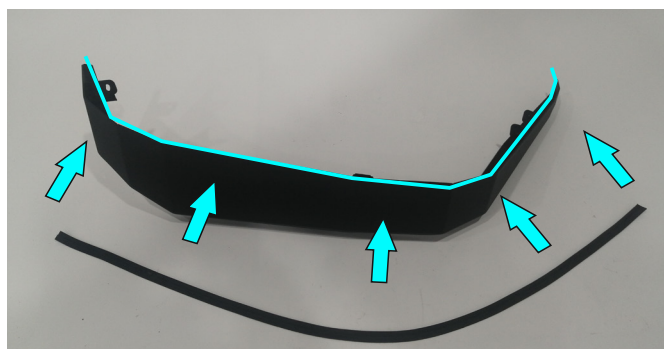


Fig. 33



Fig. 34

31. Stick weatherstrip (item 10) on face side of fender, on the edge of fender, as shown in fig.33-34.

NOTE! Begin by installing RIVAL 2D.2729.1 inner fender liner in case if you plan to install RIVAL 2D.2719.1 Fender Flares with RIVAL 2D.2729.1 inner fender liners.

NOTE! Continue with steps 42-48 in case if you plan to install RIVAL 2D.2719.1 Fender Flares with OE inner fender liners

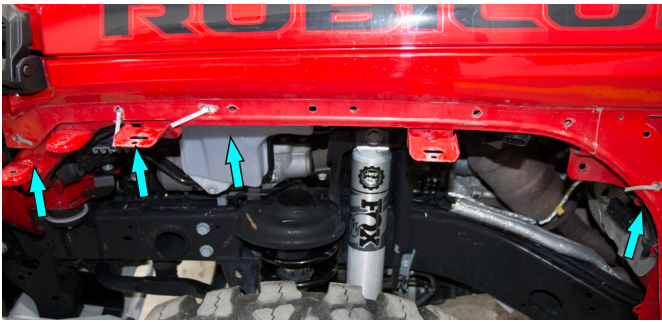


Fig. 35

32. Install insert nuts (item G).

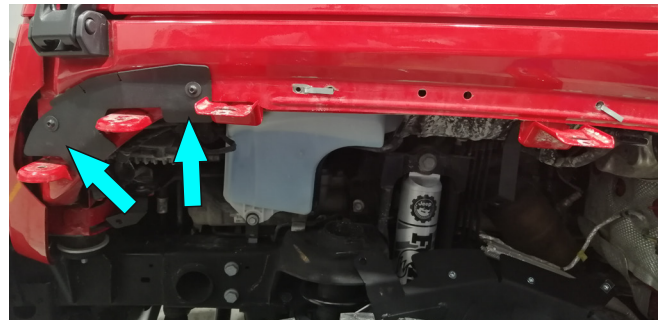


Fig. 36

33. Install front fascia bracket (item 3) onto the vehicle using screws M6 (item A) and washers 6 (item C).

***Do not tighten yet.**



Fig. 37

34. Install middle fascia bracket (item 4) onto the vehicle using screws M6 (item A), washers 6 (item C) and insert nut (item 9).

***Do not tighten yet.**

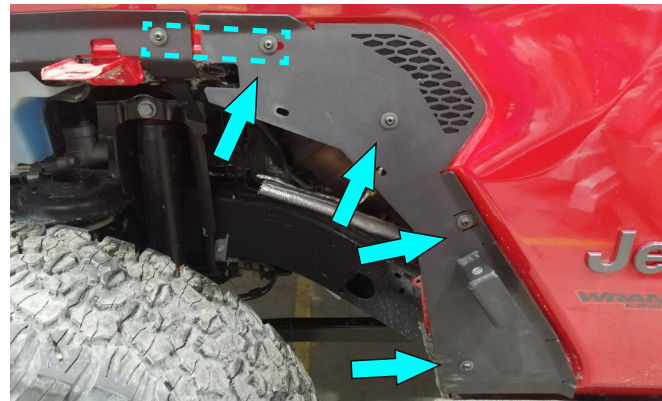


Fig. 38

35. Install fender bracket (item 2) onto the vehicle using screws M6 (item A) washers 6 (item C), insert nut (item 9) and nuts M6 (item E).

***Tighten all hardware after that.**



Fig. 39

36. Install fender (item 1) onto the vehicle. Attach weatherstrip along the outline.

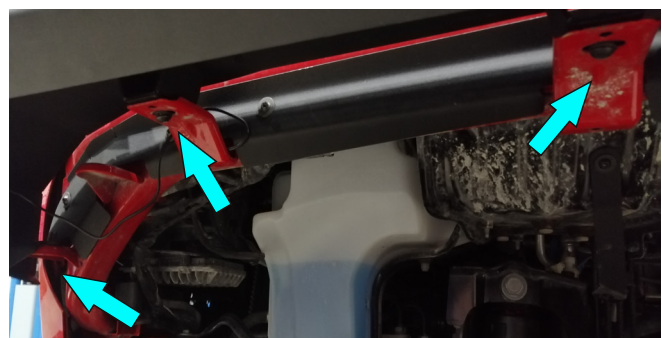


Fig. 40

37. Fix fender using screws M8 (item B), washers 8 (item D) and nuts M8 (item F).

***Do not tighten yet.**

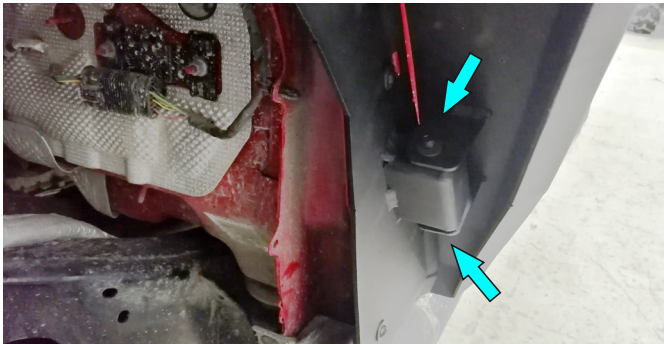


Fig. 41

38. Fix using screws M6 (item A) and washers 6 (item C) to fender bracket.
***Do not tighten yet.**



Fig. 42

39. Push fender to the vehicle body, to align the fender with the vehicle.
***Tighten all hardware after that.**

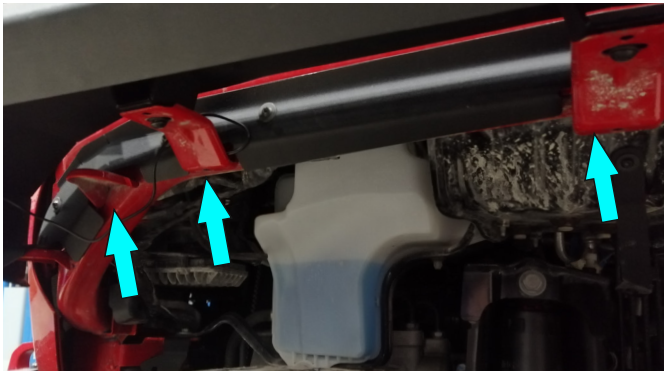


Fig. 43

40. Fix wiring to the brackets using cable ties (item I).



Fig. 44

41. Connect wiring plug. Connect the negative battery terminal cable

Repeat steps 2 - 41 for the other side of the vehicle

RIVAL 2D.2719.1 Fender Flares installation with OE inner fender liners



Fig. 45

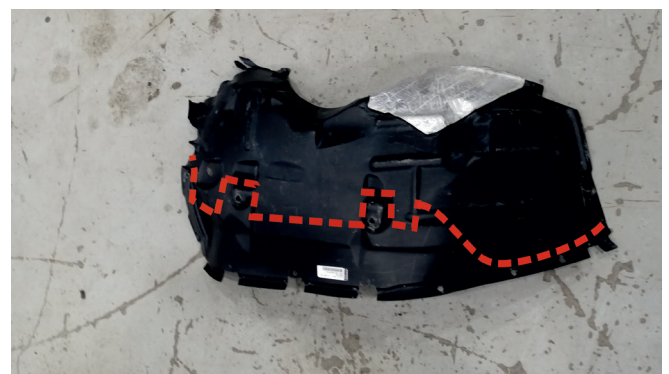


Fig. 46

42. On driver's side, mark cutting line on OE inner fender liners, same as on picture, matching with fender bracket and body of the vehicle. Cut OE inner fender liners after that.

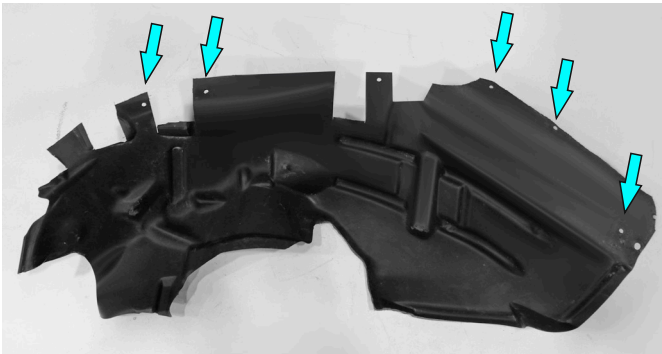


Fig. 47

43. Align OE inner fender liner with body of the vehicle. Mark drilling holes same as on picture and drill after that.

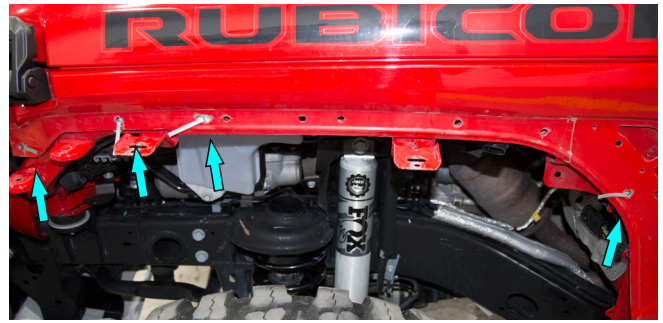


Fig. 48

44. Install insert nuts (item G).



Fig. 49

45. Install OE inner fender liner on the vehicle and fix it using OE plastic clip (fig. 49).

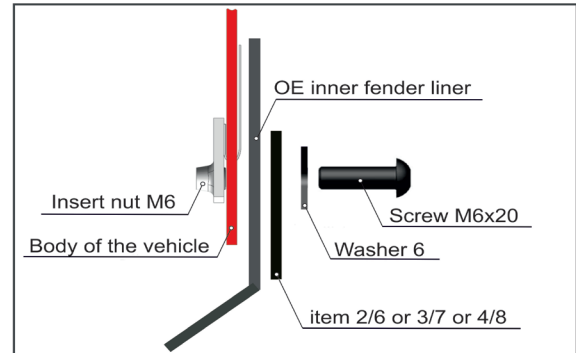


Fig. 50

45. Install OE inner fender liner on the vehicle and fix it using OE plastic clip (fig. 49).



Fig. 51

46. Bend inner fender edges on the rear part of the arc, install left fender bracket (item 2), insert inner fender between left fender bracket (item 2) and body of the vehicle. Fix it using screws M6 (item A), washers 6 (item C), insert nut (item 9) and nuts M6 (item E) (fig.50, 51).
***Do not tighten yet.**



Fig. 52

47. Bend inner fender edges on the front part of the arc, install left front fender bracket (item 3), insert inner fender between left front fender bracket (item 3) and body of the vehicle. Fix it using screws M6 (item A), washers 6 (item C), insert nut (item 9) and nuts M6 (item E) (fig.50, 52).
***Do not tighten yet.**



Fig. 53



Fig. 54

48. Bend inner fender edges on the middle part of the arc, install left middle body bracket (item 4), insert inner fender between left middle body bracket (item 4) and body of the vehicle. Fix it using screws M6 (item A), washers 6 (item C), insert nut (item 9) and nuts M6 (item E).

***Tighten all hardware after that.**

49. Install fender following steps 36-41.

Repeat steps 2-31, 42-49 for the other side of the vehicle

Before operating a vehicle fitted with RIVAL Aluminum Fender Flares 2D.2719.1:

- make sure all fittings are tightened;
- check all electrical wiring attached to lights.

