

INSTALLATION INSTRUCTIONS

****Installation recommendation:** JBA recommends in most cases that the vehicle be taken to a reputable exhaust shop. It is recommended that all slip joints be tack welded after installation.

40-1502 1991-96 Jeep Wrangler 4.0L L6

Tools Required:

9/16" deep socket
3/8" ratchet
3/8" Extension
5/16" allen wrench
13mm socket
21mm socket
21mm combination wrench
channel lock pliers
rubber mallet
anti-seize
spray lubricant or penetrating oil
reciprocating saw or hack saw
pair of channel lock pliers 10"

1. Remove and inventory new JBA exhaust.
2. Disconnect negative battery cable and allow vehicle exhaust to cool.



3. With vehicle raised and properly supported, remove pan bar over rear axle by removing two bolts using a 21mm socket or combination wrench and 5/16" allen-wrench.



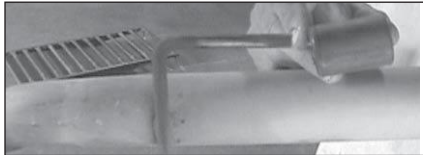
4. Using a reciprocating saw, cut tail pipe off 4" behind rear muffler hanger. See notes #1



5. Remove rear tail pipe hanger using a 13mm socket and extension.



6. Remove tail pipe from rear of vehicle.



7. Remove rubber grommet from tail pipe hanger rod and save, as it will be reused.



8. Remove front muffler clamp using a 15mm socket.



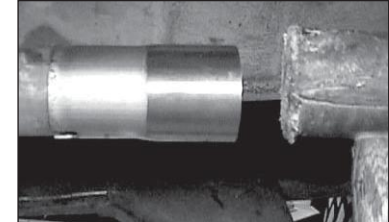
9. Spray lube on two rear muffler hanger rod rubber grommets.



10. Support muffler and remove two rear muffler hangers from rubber grommets using channel lock pliers.



11. Using some form of heat and force remove muffler assembly without damaging stock catalytic converter pipe.



12. Install JBA head pipe, aligning notch with locating pin. Note: you may have to tap on with rubber mallet. See notes #2



13. Install and position 'clamp, over head pipe (A) slip joint and tighten completely using a 9/16" deep wall socket. NOTE: USE ANTI SEIZE ON THREADS OF CLAMP See notes #3



14. Install muffler with offset toward rear and inward.



15. Install rear muffler clamp/hanger into lower holes in rubber grommets, with rods pointing toward passenger side.



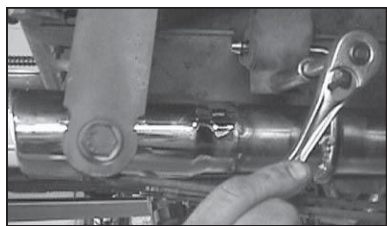
16. Position rear muffler clamp/hanger over rear muffler slip joint and hand tighten only at this time.



17. Install factory rear tail pipe rubber grommet on rear tail pipe hanger rod.



18. Install tail pipe from rear of vehicle. Place rubber grommet in holder and slip tail pipe into rear muffler slip joint 2".



19. Reassemble rear tail pipe hanger assembly, and tighten using a 13mm socket.

Parts List

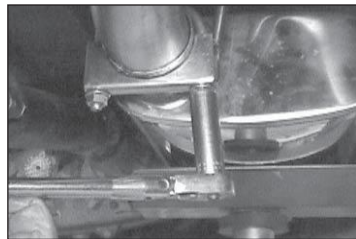
Head pipe	2
Muffler	1
Tail pipe w/tip	1
2-1/4 clamp	1
2-1/2" clamp	1
2-1/2" clamp/hanger	1



20. Position muffler and install 2" clamp over front muffler slip joint. Tighten completely using a 9/16" deep wall sock- et. NOTE: USE ANTI SEIZE ON THREADS OF CLAMP. See notes #3



21. Reinstall pan bar over rear axle. Check for proper clearance on tail pipe.



22. Position tail pipe, checking chrome tip for clearance, and tighten clamp/hanger (E) completely using a 9/16" deep wall socket. NOTE: USE ANTI SEIZE ON THREADS OF CLAMP See notes #3

23. Check exhaust kit for proper clearances, and tack weld all slip joints in three spots.

24. Using a soft cloth, remove all prints from turnout tip.
25. Lower vehicle and reattach the negative battery cable.

NOTES:

1. If vehicle is lifted with proper vehicle lift, step #4 can be eliminated. The muffler assembly can be removed in one piece by removing right rear shock, and raising right rear frame rail.
2. Due to the possibility of stock catalytic converter being changed or altered from stock, JBA has supplied an extra head pipe with a longer length for customer to cut at his discretion for a custom fit. First you must install JBA tail pipe, rear muffler clamp/hanger, and muffler and position for proper clearance, to determine where to cut extra head pipe supplied.
3. If anti seize is not used on threads of clamps before tightening, the nut's will gall, and clamp rod will break.