



www.hylineoffroad.com

1507 C West Park Avenue ~ Perkasie, PA 18944  
 Tel: 1.888.495.4631 ~ Fax: 215.257.4364

## **Proudly Made In USA**

### Installation Instructions:

TJ Rock Slider

Part Number: **300.300.100**

### Vehicle Fitment:

1997 – 2006 Jeep Wrangler

Will Not Fit Unlimited Models

### Parts List

Qty:

- 1 Passenger & Drivers Rock Slider
- 2 Rocker Panel Back Up Strips
- 10 3/8" x 1" Stainless Cap Bolts
- 10 3/8" Flanged Lock Nuts
- 2 Paint Guard Adhesive Foam

### Tools Needed



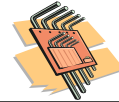
Ratchet  
 9/16" Deep  
 Socket  
 12" Extension



Floor Jack  
 Approx, 18"  
 Block of  
 Wood



Hand Drill  
 25/64" Bit  
 3/8" Transfer  
 Punch  
 C-Clamp or Vise



7/32 Allen  
 Wrench



Safety Glasses

Congratulations on your purchase of the Hyline Offroad Rock Slider. All of our products are completely manufactured in our facility located in Perkasie, PA. They are designed and engineered by Offroad enthusiasts just like you to be rock solid at an affordable price. Hyline Offroad would like to thank you for your recent purchase and look forward to serving you in the future.

**Hyline Offroad Staff**

# PLEASE READ INSTRUCTIONS BEFORE BEGINNING INSTALLATION

**IMPORTANT NOTE:** ANY SAHARA OR ANNIVERSARY MODEL WITH UPGRADED TRIM OPTION MUST REMOVE FACTORY STEPS AND PLASTIC ROCKER PANEL COVER BEFORE INSTALLING HYLINER'S Rock Sliders

**NOTE:** Before starting installation, Park you Jeep on flat, level area and set the parking brake and emergency brake. **INSTALL ONE SIDE AT A TIME!**

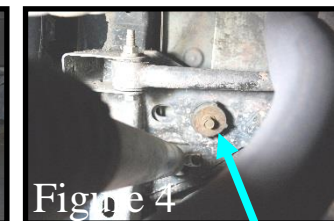
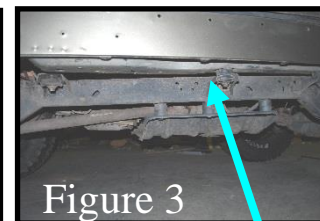
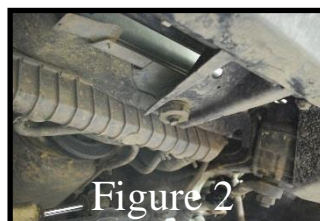
## **Driver Side Rock Slider Installation**

Step 1 – Remove plastic fender flare extensions by using 8mm wrench to remove 3 screws (See Figure 1). You WILL have to drill out the three threaded inserts. Do this by SLOWLY & LIGHTLY drilling with a drill bit about the same size as the diameter of the threaded insert. Drill until the head of the insert is removed, then using a punch you can pop the inserts out of the sheet metal.



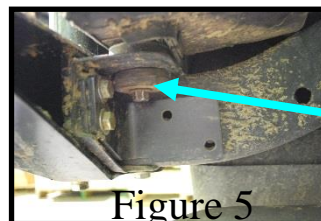
Step 2 – Install Paint Guard Foam onto Rock Slider by peeling back paper to expose adhesive. Cut any excess foam material off and cutout holes.

Step 3 – Thoroughly clean the area of the Jeep body that the Slider will be mounted to both under the door and underneath the body.



Step 4 – Remove the body mount bolts from the following places using 16mm socket:

- 1 – Front Center (Fig. 2)
- 3 – Passenger Side (Fig. 3)
- 1 – Next to the Rear Shock Mount (Fig. 4)
- 1 – Below the Rear Corner Panel (Fig. 5)



Passenger Side Shown. Complete one side installation at a time.

Step 5 - Once the body mount bolts are removed you can use the floor jack and extension board to raise the passenger side first. (See Figure 6 for best jacking location in front of Rear Tire) Raise the body enough so that you're able to remove the body mounts.



Figure 6

Step 6 - Remove the two body mount bushings that are shown in Figure 7. Remove the metal cap washer from bushing before trimming. You will need to trim about 1/8" off the top of the rubber body mount bushings, to allow for the steel thickness of the Rock Slider. (See Figure 8: Trimmed rubber bushing)

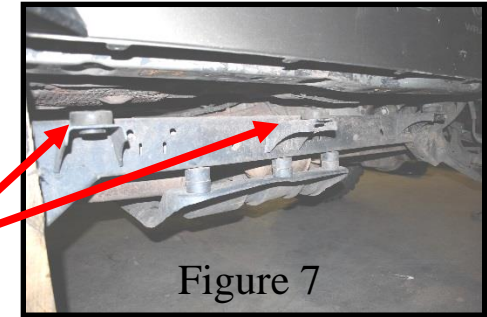


Figure 7

The other bushing that is closer to the front DOES NOT have to be trimmed and will remain in place.

Step 7 - Place the two metal cap washers from the bushings into the two holes on the Rock Slider as shown in (Figure 9). Then, place the trimmed rubber bushings back into the body mount brackets on the Jeep. Then slide the Rock Slider into place onto the Jeep while positioning the stem of the metal cap washers through the hole in the rubber bushings. Gently lower the body back down.

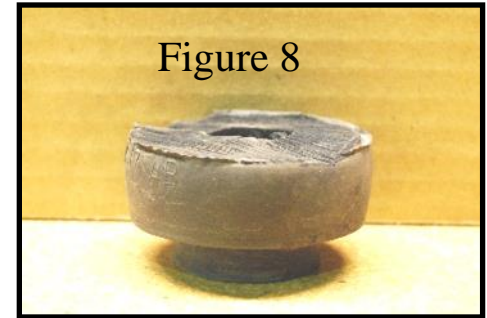


Figure 8

Step 8 - Make sure the Rock Slider is located exactly where you want it before continuing. If you need to tweak it's location, simply raise the body slightly and nudge the Slider whichever way necessary.

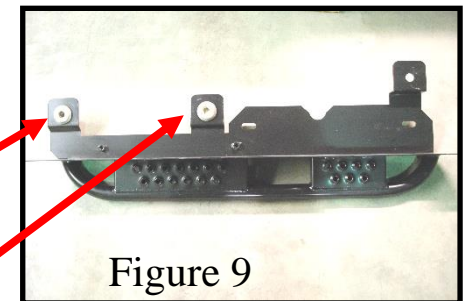


Figure 9

Step 9 - Re-install the 3 Body Mount Bolts and Hand Tighten Only

Place metal cap washer into these two location on Rock Slider Panel before installing onto Jeep.

Step 10 - Using a C-Clamp or Vise Clamp, clamp the Rock Slider to the body. Then using the 3/8” Transfer Punch and hammer locate each of the 5 Holes. Carefully remove the Rock Slider from the Jeep and set to the side until drilling is complete.

Step 11 - Check for and move Wires, Carpet or other obstructions before drilling. Use the 25/64” Bit to drill the 5 holes that were located in Step 10. After drilling, remove all sharp burrs, wipe out all metal Shavings and touch up bare metal with clear aerosol spray or similar rust inhibitor.

Step 12 - Re-Install the Rock Slider onto the Jeep the same way you did in Step 7. Align the holes in the Rock Slider with the holes you just drilled and install the 3/8” x 1” Stainless Bolts with 3/8” Nuts. Use the Rocker Panel Backup Strip behind the 4 Bolts under the door. (See Figure 10)



Back Up Strip Behind Door Panel. Chamfered Edge is Located Toward Rear.

Figure 10

Step 13 - Re-Install all Body Mount Bolts that were Previously removed. The very front body Mount near the radiator will be kept off until the opposite Rock Slider is installed. Tighten to Factory Specs.

Step 11 - Repeat Steps 1 – 13 on the opposite side. Re-check to make sure all bolts have been tightened. Check again after about 50 driven miles.

Send your OFFROAD pictures to [pics@HylineOffroad.com](mailto:pics@HylineOffroad.com) . If we choose any one of your pictures to be used on our website, We send you a FREE Hyline Offroad T-Shirt.

**! Attention**

Installation instructions provided must be read and followed exactly when installing product. Failure to do so could potentially result in injury or death of any occupants in the vehicle. WEAR SEAT BELTS AT ALL TIMES WHEN DRIVING!

Though our products are rugged, they are primarily designed and built to enhance the appearance of the vehicle and will not protect from death or injury in the event of an accident. Adhere to all vehicle manufacturers specifications