

## 700-Tire Swing

Holds up to a 36" Spare, Swings clear of rear tailgate for easy access. One-piece construction creates a clean professional appearance. 2 1/2" O.D. heavy-duty tubing pivots on a unique mounting bracket that can be installed to any flat-topped bumper with a 3" surface. Requires original tire mounting hardware to be removed from tailgate and to be easily bolted onto your 700-Tire swing. The 700-Tire Swing can be installed on any bumper that is 4 3/8" wide and 3" deep. You will find that the OEM TJ Wrangler bumper is not very strong and you will need to reinforce it to mount the 700-Tire Swing. For quick and easy installation we suggest you buy Olympic 4x4's 550, 505, or 553 Rock rear bumpers and install the tire swing on the bumper when the bumper is not on the vehicle. Olympic 4x4 Products are serviced by our factory. We provide answers to installation questions. We ship parts ASAP. Try us before the hassle of returning Olympic 4x4 Products to your retailer or mail order specialist.

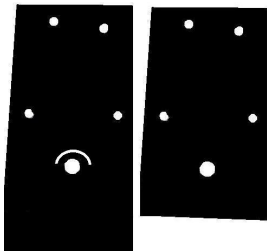
### **For assistance please call (800) 777-0878.**

**Note:** CJ owners will need to purchase a tire carrier to mount their spare tire to the 700-Tire Swing (Jeep part #55175913AC). YJ and TJ owners will be required to remove their OEM tire mount from their tailgate and install it on their 700-Tire Swing.

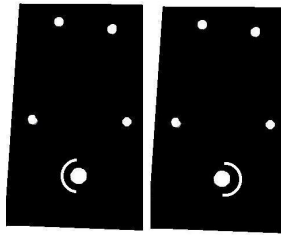
**Note:** TJ owners with a fiberglass hard top will not be able to open their rear hatch with 700-Tire Swing. Tail gate opening will be limited down to 85%



### Contents photos



Driver side mounting plates



Passenger side mounting plates  
Bottom plate is threaded.



Holding pin



Tire swing



Bumper reinforcement plate

### Hardware list

<u>Qty</u>	<u>Description</u>
8	7/16" X 1 1/4" hex head bolts
16	7/16" flat washers
8	7/16" lock washers
8	7/16" hex head nuts
4	1/4" X 1" hex head bolts
8	1/4" flat washers
4	1/4" lock washers
4	1/4" hex head nuts
1	1/2" X 6" Shoulder bolt
1	Spacer

### Parts list

Tire swing  
Driver side upper and lower mounting plates  
Passenger side upper and lower mounting plates  
Holding pin  
Bumper reinforcement plate

### Optional parts (not included)

Wheel lock (keyed lug nut)

**Tools required**

3/8" or 1/2" drive ratchet wrench

Socket sizes: 1/2", 5/8", and 11/16"

Open-end wrench sizes: 1/2", 5/8", and 11/16"

3/8" Allen wrench

**Optional tools** for installing on bumpers other than an Olympic 4x4 bumper:

Drill motor

1/2" drill bit

Instructions are written for installation on Olympic 4x4's 550, 505, or 553 Rock rear bumpers.

- Step 1. Remove the OEM tailgate mounted spare tire carrier. Set it aside since it will be used later on.
- Step 2. Remove the bolts that secure your bumper to the bumper mounting brackets. Then remove bumper.

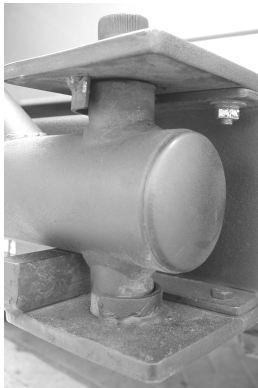


Photo 1



Photo 2

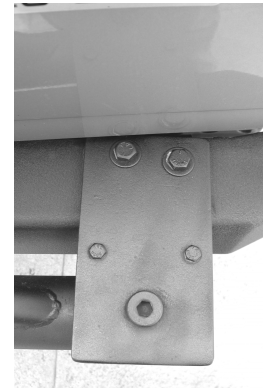


Photo 3

- Step 3. Install the passenger side brackets by placing the top passenger side bracket on top of the bumper and secure it with 7/16" X 1 1/4" hex head bolt, flat washers, lock washer, and 7/16" nut. The passenger side top bracket has a non-threaded hole. Install the passenger side bottom bracket on the bottom of the bumper and secure it with 7/16" X 1 1/4" hex head bolt, flat washers, lock washer, and 7/16" nut. The passenger side bottom bracket has a threaded hole. To ease the installation of the bottom mounting bracket, install the 7/16" X 1 1/4" hex head bolt through the inside of the bumper with the threads pointing downward, that way it is easier to install the mounting bracket, flat washer, lock washer, and 7/16" nut. See photos 1, 2, & 3. Photos show a completed view of the tire swing.

**Note:** In step 3 you are going to mount the mounting brackets so that they are bolted in a way that they sandwich your bumper. The bolts go through the tire swing mounting brackets, through your bumper and bumper-mounting bracket. To install the 700-Tire Swing on other manufactures bumpers, you will be required to drill 1/2" mounting holes or weld the mounting brackets to your bumper 33" apart so that the tire swing bushings will slip right in.

- Step 4. Install the reinforcement plate against your rear bumper between the passenger side mounting brackets with the flat part flush against your bumper. Secure the reinforcement plate using (4) 1/4" X 1" hex head bolts, flat washers, lock washer, and 1/4" nut. There are 4 holes in which you line up and install the 1/4" hardware.



Photo 4

- Step 5. Install the driver side brackets by placing the top driver side bracket on top of the bumper and secure it with 7/16" X 1 1/4" hex head bolt, flat washers, lock washer, and 7/16" nut. The driver side top bracket has a non-threaded hole on it. Install the driver side bottom bracket on the bottom of the bumper and secure it with 7/16" X 1 1/4" hex head bolt, flat washers, lock washer, and 7/16" nut. The driver side bottom bracket is longer than the other brackets and has a bend that will point downward and it also has tire swing stops welded on it. To ease the installation of the bottom mounting bracket, install the 7/16" X 1 1/4" hex head bolt through the inside of the bumper with the threads pointing downward, that way it is easier to install the mounting bracket, flat washer, lock washer, and 7/16" nut. See photos 1, 2, &3. Photos show a completed view of the tire swing.



Photo 5

- Step 6. Slide the tire swing between the mounting brackets and align the holes in the tire swing bushings so they line up with the holes in the mounting bracket. Secure the driver side with the holding pin and secure the passenger side with the 1/2" X 6" shoulder bolt. To secure the shoulder bolt in place you must first install the metal spacer on the shoulder bolt, and then insert the shoulder bolt through the top mounting plate, through the bumper, through the tire swing, and then it will thread into the bottom mounting plate. Tighten with a 3/8" Allen wrench. **Re-install bumper with tire swing attached onto vehicle.**



Photo 6

Step 7. Install your spare tire carrier onto the tire swing using 5/16" X 1 1/4" hex head bolts, flat washers, lock washer, and 5/16" nut. See photo 6.

Step 8. Install your spare tire on the spare tire carrier and secure in place with lug nuts that work with your spare tire carrier. Stock jeep lug nuts are 1/2"-20RH thread type.

**Note:** You may want to purchase a wheel lock to ensure the security of your spare tire.

Step 9. Check tightness of all nuts and bolts.

Step 10. After 500 miles or first off-road trip, re-check tightness of all nuts and bolts.

**Note:** This is also a good time to purchase and install Olympic 4x4 Products 904-Sierra Rack. Pictured below. Holds up to 50 lbs. on stock tailgate mounted tire carrier and up to 250 lbs. on Olympic 4x4's tire swing. Perfect for carrying that ice chest that just doesn't seem to fit anywhere in your jeep. Sierra rack is designed to work with the stock Jeep bolt pattern (5 on 4.5")

