



INSTALLATION INSTRUCTIONS

EXPANDABLE REAR SECURITY LOCKBOX #071

Please read and fill out the enclosed warranty registration card to activate your warranty.

PARTS CHECKLIST



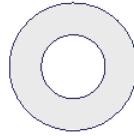
(2) 5/16 x 3" BOLTS



(4) 5/16 NYLOCK NUTS



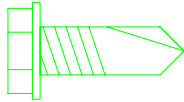
(4) 5/16 X 2 1/2" BOLTS



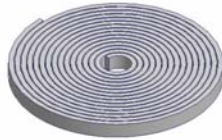
(8) 5/16" WASHERS



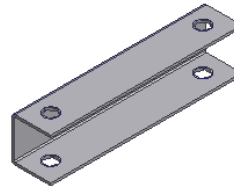
(6) 10-32 NUTS



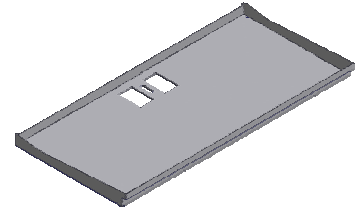
(2) 1/4" SELF TAPPING SCREWS



RUBBER SEAL



(2) MOUNTING BRACKETS



FLOOR TRAY

For office use only

- Pushbutton w/ finger pull
- (2) Latches
- (1) 2 point latch cover
- (1) 2 point rod
- (3) 12" - 1/4" thick rubber seal
- Door Guard 27,27,20.5.,13,13
- (6) "T" Latches mounted
- Floor Tray
- Door Guard for tray 28",13 3/8",13 3/8"
- 28" - 1/8" thick rubber seal for tray
- Shipping package
- (2) Mounting Brackets
- Rubber seal package
- Warranty card
- Key for lock
- Keyed alike
- Color code
- Checked by _____

TOOLS NEEDED

- Electric drill
- 3/8" Drill bit
- Marker or pencil
- Knife
- 1/2" Socket and ratchet
- Long extension for ratchet
- Universal joint for ratchet
- 1/2" Wrench
- Silicone sealant (Recommended)

PLEASE READ ALL INSTRUCTIONS THOROUGHLY BEFORE STARTING INSTALLATION.

1. Install rubber seal on lid and check lock operation. (SEE FIGURE 1)
2. Place the Tuffy box in the vehicle and center it making sure that it is as close to the tail gate as possible while ensuring the tailgate will latch shut, and the seat will fold and tumble.
3. Using a marker or pencil, mark (4) spots through the 3/8" mounting holes in the trunk.

WARNING!

Make sure that there is nothing under the vehicle that will be damaged by the drill bit when drilling. IN MOST VEHICLES THERE IS A GAS TANK UNDERNEATH THE REAR OF THE VEHICLE.

4. Remove the trunk. Cut the carpet at the (4) marked spots. Using a 3/8" drill bit, drill out the (4) marked spots in the floor. Wrangler TJ and YJ have a body brace that will also have to be drilled through under holes 2 and 4. (SEE FIGURE 2)

5. Remove the original seat belt bolt holding down the seat belt bracket in the center of the floor, you will reuse this bolt. (SEE FIGURE 3)
6. Cut the carpet directly on top of the holes for the seat belt bolt and fold it out of the way.
7. Place the Floor tray in the back of the vehicle. The original seat belt bracket will remain under the floor tray while the seat belt straps will have to be maneuvered through the slots in the tray. (SEE FIGURE 3)
8. Fasten the Floor tray down by inserting the original seat belt bolt through the hole in the Floor tray then through the hole in the original Seat Belt Bracket and into the floor making sure the tray is aligned with the Tuffy box. **Do not tighten all the way, leave about 1/16"**. (SEE FIGURE 3)
9. Place the trunk back in the vehicle with the mounting brackets under the holes in the trunk and aligned it with the (4) drill holes. It will make alignment easier using a bolt temporarily to align holes (SEE FIGURE 2)
10. Position the floor tray by sliding the side of the tray with the notched flange about 1/16" under the back bottom of the Tuffy box. Make sure the Tuffy box is resting between the (2) notches in the tray, this will ensure the proper alignment. (SEE FIGURE 3)

NOTE: It is recommended to use silicone sealant in any holes drilled in the vehicle to prevent rusting.

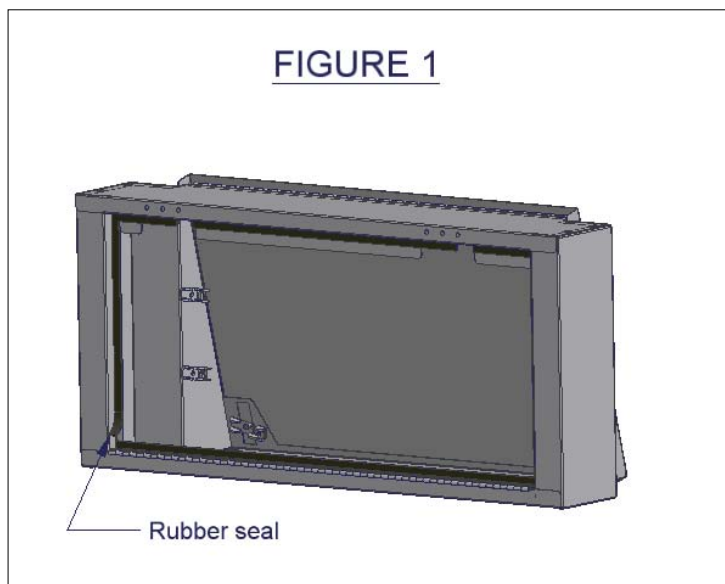
FOR INSTALLATION IN JEEP WRANGLER TJ, YJ, AND CJ-7

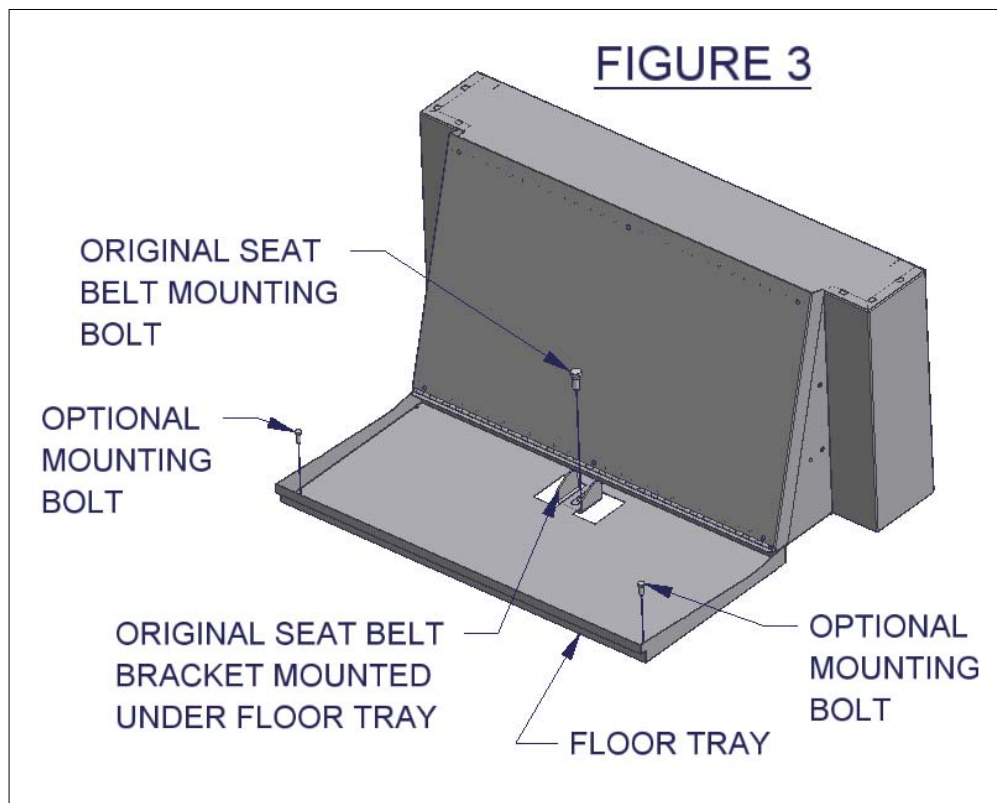
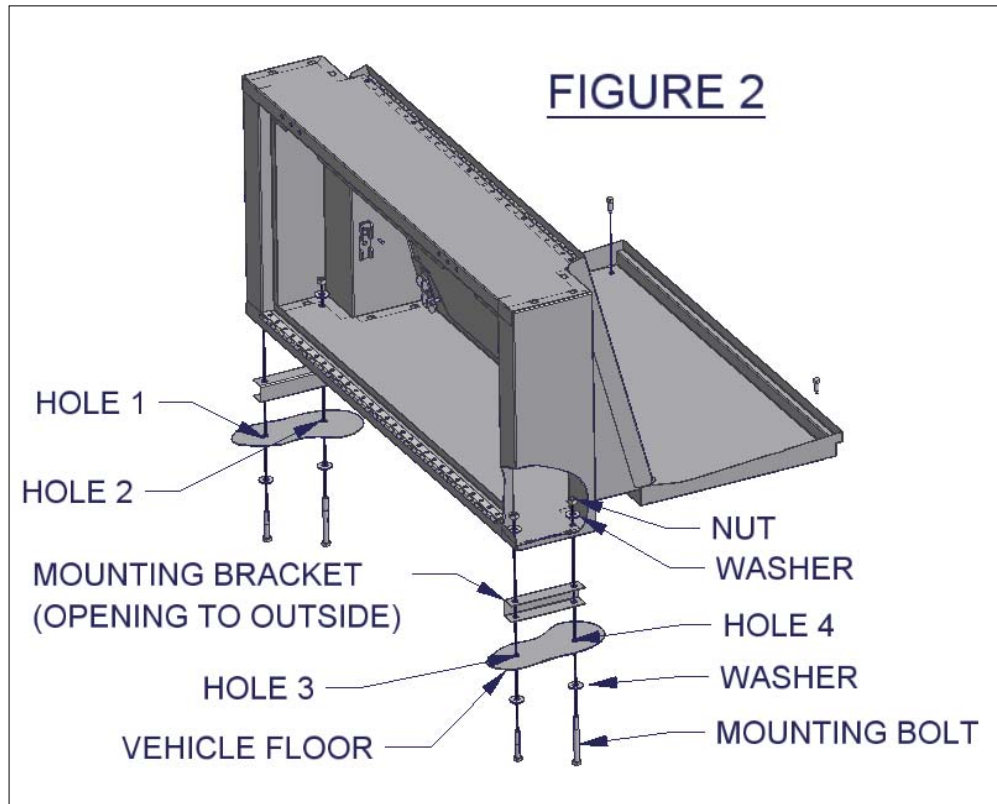
NOTE: THE UNDERSIDE OF THE MOUNTING HOLES ARE DIFFICULT TO ACCESS. DROPPING THE GAS TANK IS NOT NECESSARY BUT MAKES ACCESS EASIER. CONSULT JEEP MANUAL FOR INSTRUCTIONS.

11. Install (2) 5/16 x 2 1/2" bolts with (2) 5/16" washers up from underneath in the two rear holes (1 and 3) drilled in the vehicle then through the mounting brackets into the Tuffy box. Fasten with (2) 5/16" washers and (2) 5/16" nylock nuts. **Do not tighten all the way, leave about 1/16"**. (HOLES 1 AND 3 IN FIGURE 2)
12. Install (2) 5/16 x 3" bolts with (2) 5/16" washers down from the top into the Tuffy box then through the mounting brackets into the two front holes (2 and 4) drilled in the vehicle. Fasten with (2) 5/16" washers and (2) 5/16" nylock nuts. **Do not tighten all the way, leave about 1/16"**. (HOLES 2 AND 4 IN FIGURE 2)

FOR ALL OTHER APPLICATIONS

13. Install (4) 5/16 x 2 1/2" bolts with (4) 5/16" washers up from underneath into the holes drilled in the vehicle then through the mounting brackets into the Tuffy box. Fasten down with (4) 5/16" washers and (4) 5/16" nylock nuts. **Do not tighten all the way, leave about 1/16"**. (HOLES 1, 2, 3, AND 4 IN FIGURE 2)
14. Expand the Tuffy box following the instruction in this manual. The process will be awkward because the box is not fastened down at this point. (SEE STEPS 1-5)
15. Make sure that the expanded part of the box fits inside the tray. When expanded the back panel should be resting on the flange 1" up from the bottom of the tray and the side panels should be inside the tray flanges.
16. Some adjustments may be necessary. After the desired alignment and fit have been accomplished tighten all the mounting bolts. Do not overtighten the bolts and nuts in the Tuffy box. **BE SURE TO TORQUE THE SEAT BELT BRACKET BOLT TO JEEP'S SPECIFICATIONS.**
17. Optional 1/4" self-tapping screws have been provided to fasten down the tray if needed. (SEE FIGURE 3)
18. Check the lid operation on the Tuffy box, check to make sure the rear Jeep door closes, and the rear seat folds and tumbles.





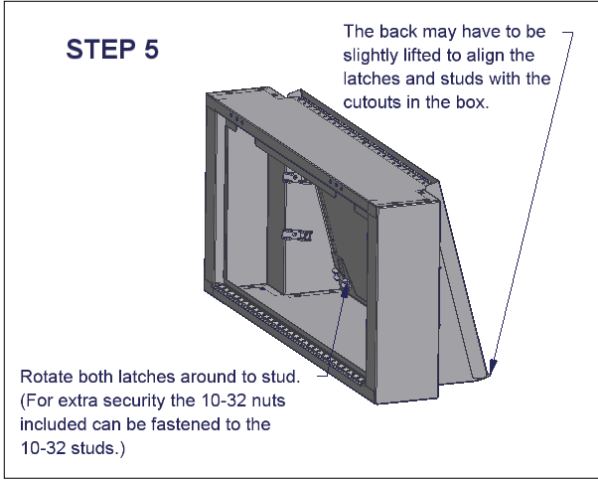
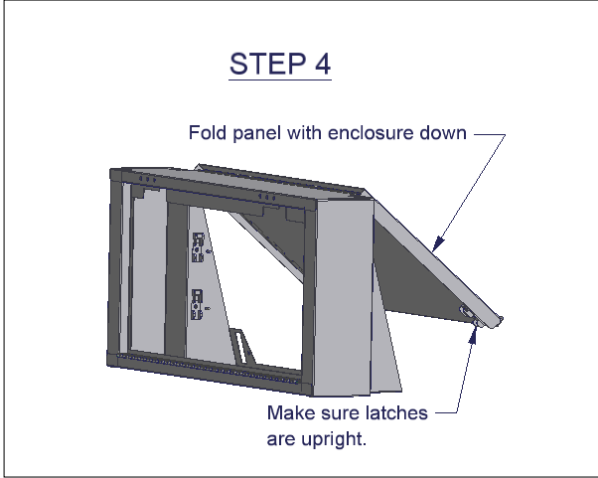
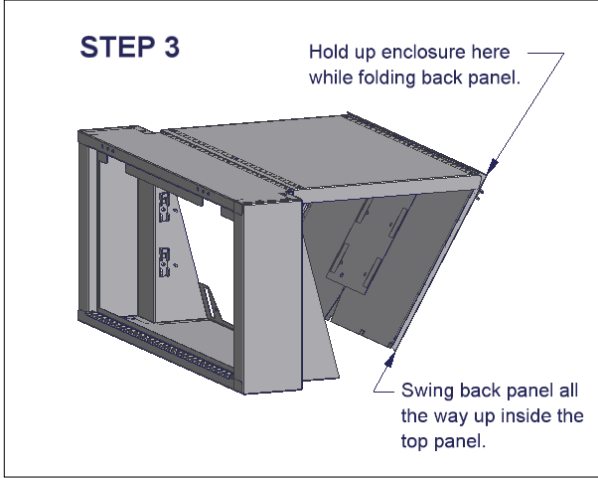
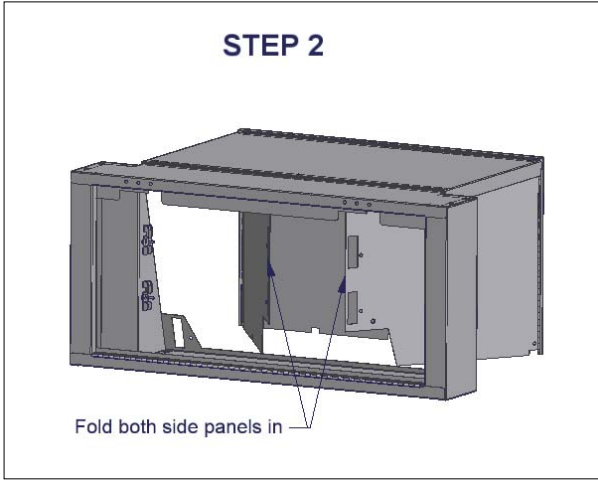
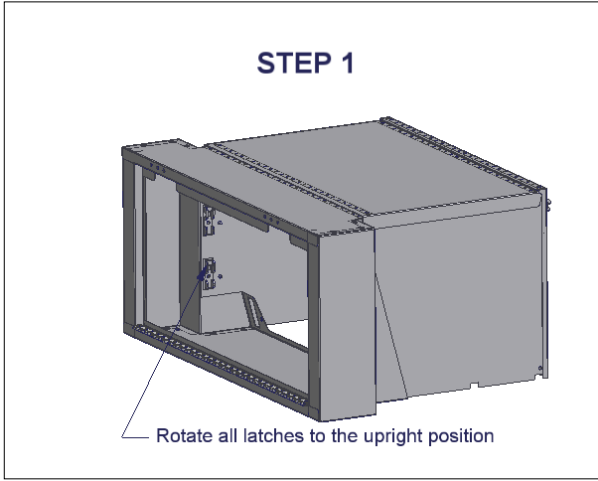
FREQUENT LUBRICATION IS NECESSARY ON THE LOCKING SYSTEM

The pushbutton lock contains an “O” ring seal to protect the interior from dust and water. If this mechanism is not lubricated regularly it will become difficult to operate and it may not return to its home position preventing the key from operating the lock. If this happens simply pull up on the pushbutton to manually bring it back to its home position. Lubricate the pushbutton with a light lubricant such as silicone spray. The pushbutton may have to be periodically disassembled and cleaned.

INSTRUCTIONS FOR FOLDING ENCLOSURE

WARNING – Be careful when folding enclosure, pinch points exist. Incorrectly following instructions or forcing the assembly into position can damage the enclosure.

NOTE – Reverse steps 1 - 5 to expand enclosure.



For Technical support call 970-564-1762