



Brute Force Intake System

Installation Instructions for:
Part Number 21-8300
1997-2002 Jeep Wrangler 4.0L I6

ADVANCED ENGINE MANAGEMENT INC.
2205 126TH Street, Unit A Hawthorne, CA. 90250
Phone: (310) 484-2322 Fax: (310) 484-0152
www.aempower.com

Instructions Part Number: 10-8300
1997-2002 Jeep Wrangler 4.0L I6 C.A.R.B. E.O. #Pending

Brute Force Intake Systems that are pending CARB approval are illegal in California except on racing vehicles which may never be used on public highways.

© Copyright 2002

Congratulations! You have just purchased the finest Air Induction & Filtration system for your car at any price!

The **AEM** Brute Force Intake System is the result of extensive development on a wide variety of cars. It is the most advanced short pipe air intake system on the market. Each system is specifically engineered for its particular application. All **AEM** Brute Force Intake Systems deliver maximum performance gains through the lightweight, all-aluminum, mandrel-bent tubing that is tuned in both length and diameter. The tube length and diameter are matched for each specific engine to give power over a broad RPM range. Every intake is coated with a high-gloss, heat-reducing Zirconia based powder coating. This special blend of powder coating helps reduce heat penetration, which in turn reduces the temperature of the inlet air charge. The cooler inlet air temperature translates to more power during the combustion process because cool air is denser than warm air. The air mass flow to the engine is increased because of the increased airflow and reduced inlet temperature, which translates to more power.

Bill of Materials for: Part #21-8300

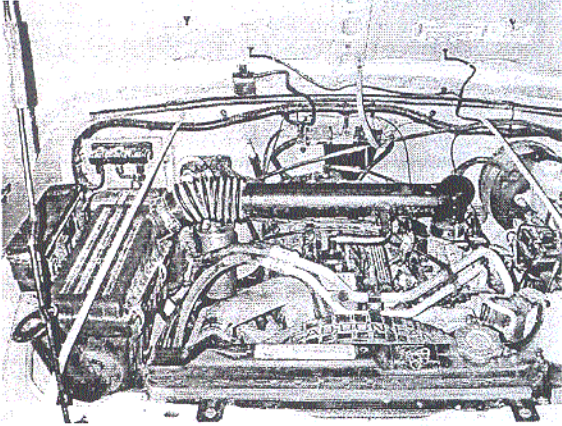
1	2-83001	Performance Air Inlet Pipe
1	21-2039	3.00" ID x 9.00" Long AEM Filter
1	5-273	3.00" to 2.75" Reducer Hose
1	103-BLO-4420	2.75" Hose Clamp
1	103-BLO-4820	3.00" Hose Clamp
11"	65004	5/8" Breather Hose
2	99024.032	1" Hose Clamps
2	444.460.04	6mm nut
2	559999	6mm X 25mm X 1mm Washer
1	1228599	Rubber Mount
1	20-8300	Heat Shield
1	1-2067	3/8"-16 X 3/4" Hex Head Bolt
1	1-2068	3/8"-16 Nut
2	1-3026	3/8" Washer
1	1-127	Mounting Nylon Cable Ties
18"	8-119	Sponge Rubber Gasket
1	2-9000	TB Spacer
2	2-9200	TB spacer Gasket
4	1-2070	Hex Flange Bolt, M6 X 1 X 50
2	2-671	Spacer
2	1-2075	Bolt
1	10-8300	Instructions
2	10-922S	AEM Large Decal - Silver
1	10-400W	Lic Plate Frame - White

Read and understand these instructions BEFORE attempting to install this product.

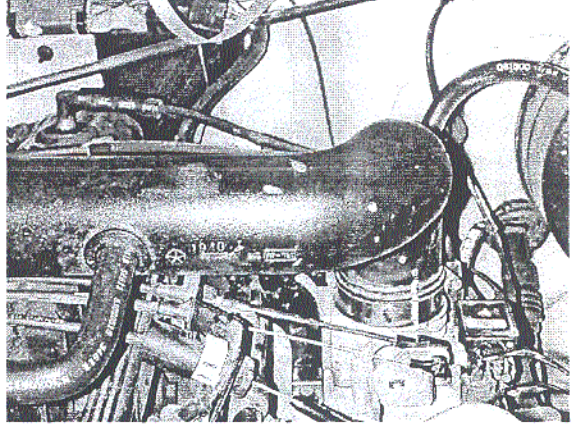
1) Getting Started

- a) Make sure vehicle is parked on a level surface.
- b) Set parking brake.
- c) If engine has run with in the past two hours let it cool down.

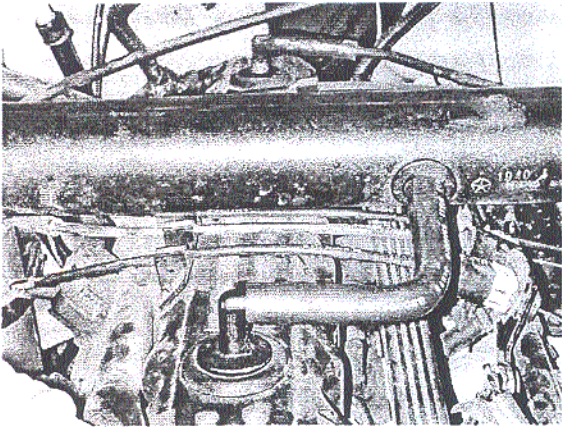
2) Removal of the stock intake system.



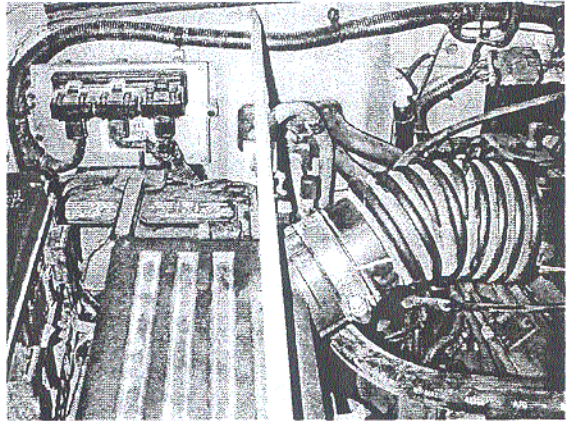
a) Stock system installed on vehicle.



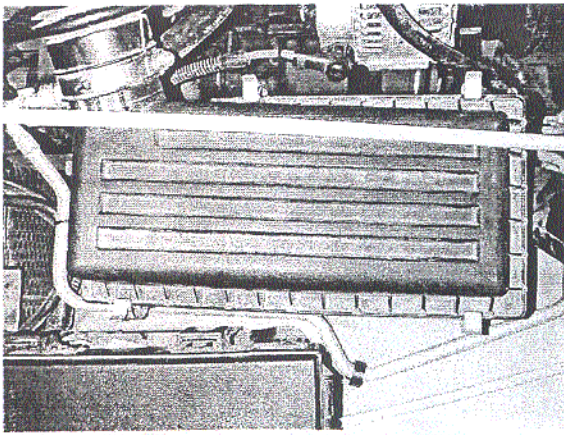
b) Remove the hose clamp securing the stock inlet tube to the throttle body.



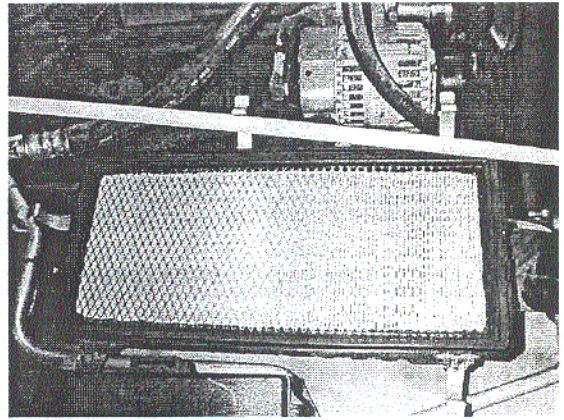
c) Remove the breather tube from the valve cover to the stock inlet tube.



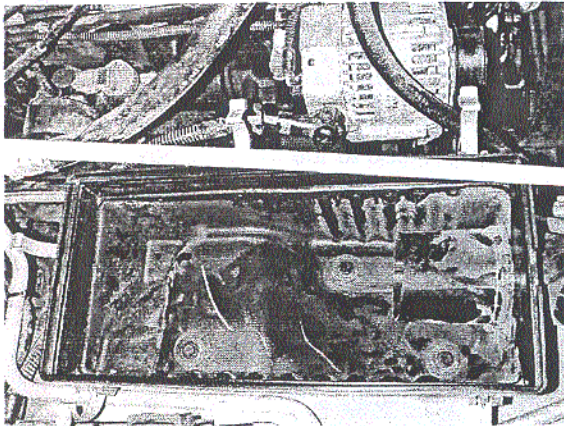
d) Remove the hose clamp securing the inlet tube to the filter box. Remove the inlet tube.



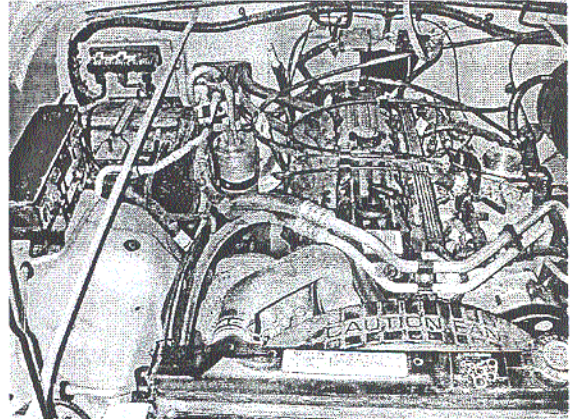
e) Remove five metal clips securing the top of the filter box to the lower filter box. Remove the filter box top from the vehicle.



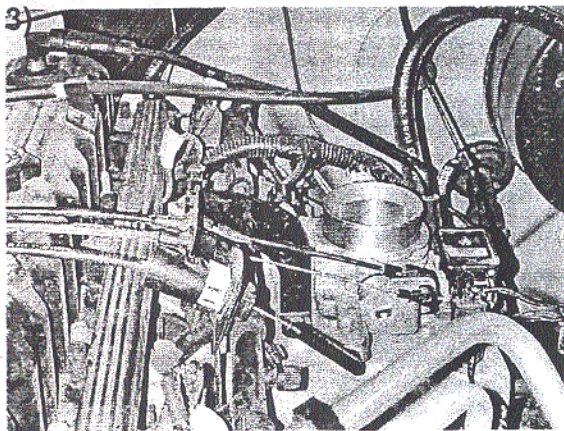
f) Remove the air filter from the lower filter box.



g) Remove the three bolts securing the lower filter box. Remove the lower filter box from vehicle.



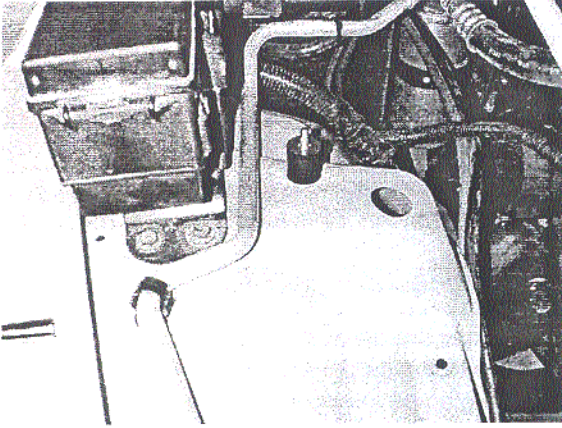
h) Stock system removed from the vehicle.



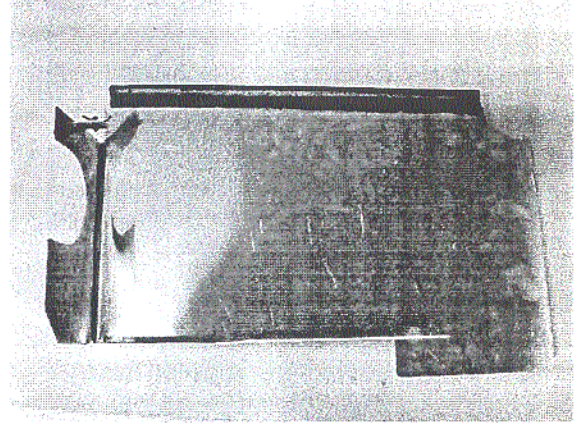
i) Remove the four bolts securing the throttle body to the intake manifold. Remove the two bolts securing the throttle linkage to the intake manifold.

Installation of the AEM Brute Force Intake System.

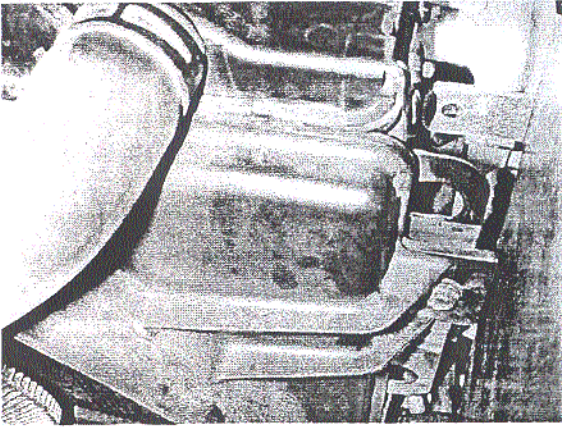
a) When installing the Brute Force Intake System, DO NOT completely tighten the hose clamps or mounting tab hardware until instructed to do so later in these instructions.



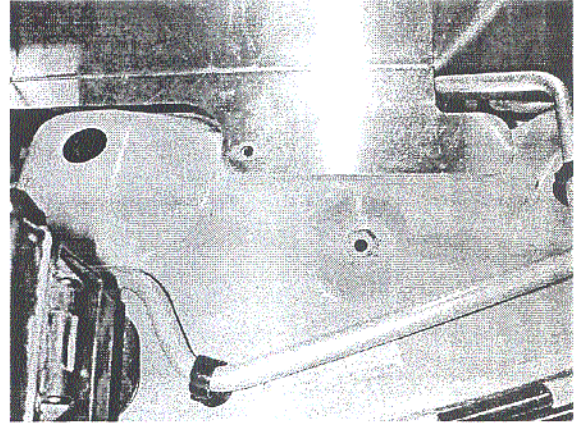
b) Install the rubber soft mount in the fender well using the supplied washer and nyloc nut.



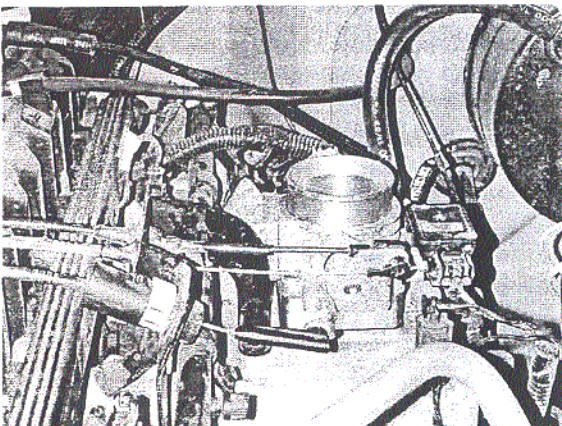
c) Install the foam rubber gasket to the top of the heat shield. Install the mounting zip tie into the hole on the heat shield.



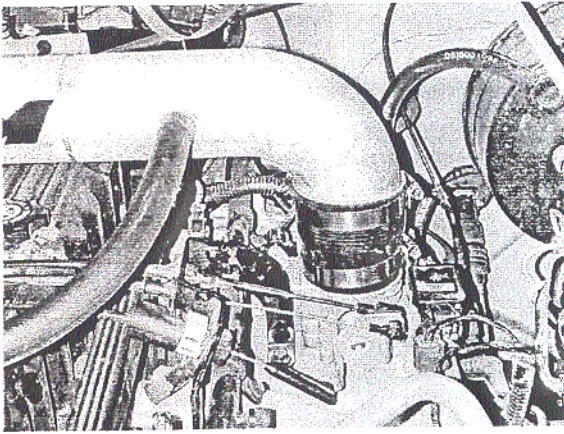
d) Install the heat shield in the vehicle. The front mounting tab will line up with one of the radiator mounting bolts. Remove this bolt and use to secure heat shield in place.



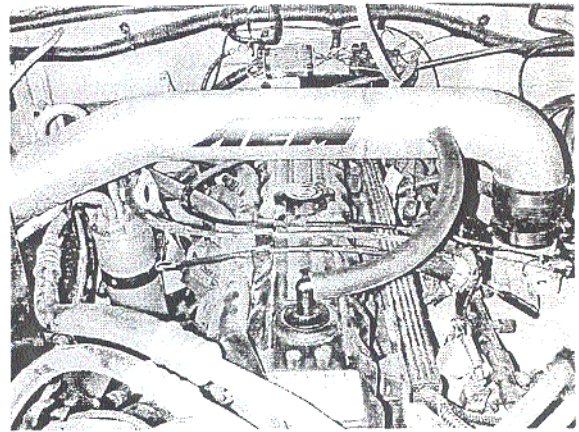
e) Use the supplied 3/8" bolts, nuts and washers to secure the heat shield in place. Use the zip tie to secure the heat shield in place with the hood support. Make sure the locking end of the zip tie is on the passenger side of the support bar.



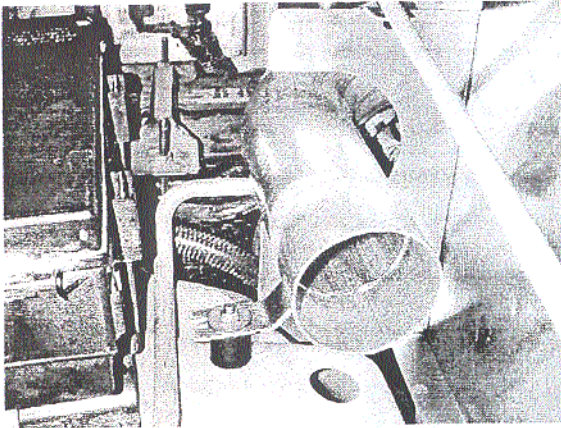
f) Install the throttle body spacer and the two new gaskets supplied in the kit. One gasket between the spacer and the intake manifold. The second gasket between the spacer and the throttle body. Secure in place using the supplied four new bolts. Install the two spacers in between the throttle linkage and intake manifold. Secure in place using the supplied bolts.



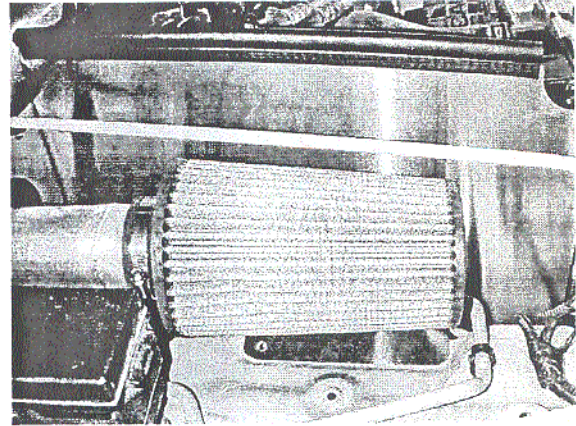
g) Install the rubber reducer onto the throttle body and use the supplied hose clamps to secure in place. Install the inlet pipe in the vehicle. The mounting tab will line up with the rubber mount.



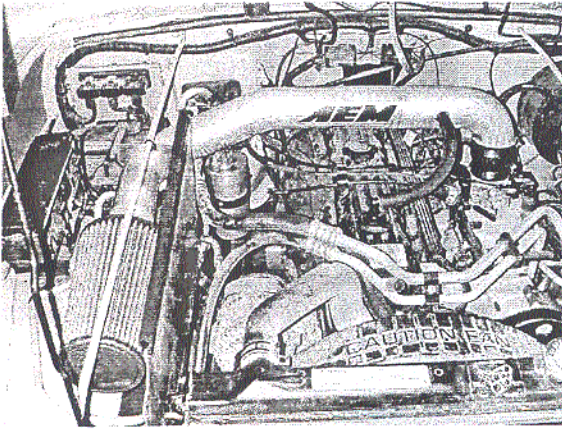
h) Install the breather hose from the valve cover to the intake pipe. Use the supplied hose clamps to secure in place.



i) Install the inlet pipe support bracket onto the rubber mount and secure in place using the supplied washer and nyloc nut.



j) Install the filter onto the inlet pipe.



k) AEM intake installed on vehicle.

4) Re-assemble the vehicle

- a) Position the filter for best fitment. Be sure that the filter or any other components do not contact any part of the vehicle.
- b) Tighten all hose clamps.
- c) Tighten the bolts and nuts on the mounting bracket.
- d) **Inspect & test throttle linkage for full open & closed throttle before starting and riving the vehicle. The cruise and kickdown cables may also require adjustment. Please refer to the factory service manual for proper adjustment of cables.**
- e) Inspect the engine bay for any loose tools and check that all fasteners that were moved or removed are tight.
- f) Start engine and perform a final inspection before driving the vehicle.