



FITTING INSTRUCTIONS

Part Number: **3450440** **X-J8001**
Product
Description: **JEEP WRANGLER JL DELUXE BULL BAR**
Suited to
vehicle/s: **JEEP WRANGLER JL MY2018 ON**

Optional Kits: **3550150 WINCH COVER PANEL KIT**
3550230 SUPPLEMENTARY F/KIT 3450440 TO RUBICON

WARNING

REGARDING VEHICLES EQUIPPED WITH SRS AIRBAG:

When installed in accordance with these instructions, the front protection bar does not affect operation of the SRS airbag.

ALSO, NOTE THE FOLLOWING:

- ◆ This product must be installed exactly as per these instructions using only the hardware supplied.
- ◆ In the event of damage to any bull bar component, contact your nearest authorised ARB stockist. Repairs or modifications to the impact absorption system must not be attempted.
- ◆ Do not use this product for any vehicle make or model, other than those specified by ARB.
- ◆ Do not remove labels from this bull bar.
- ◆ This product or its fixing must not be modified in any way.
- ◆ The installation of this product may require the use of specialized tools and/or techniques
- ◆ It is recommended that this product is only installed by trained personnel
- ◆ These instructions are correct as at the publication date. ARB Corporation Ltd. cannot be held responsible for the impact of any changes subsequently made by the vehicle manufacturer
- ◆ During installation, it is the duty of the installer to check correct operation/clearances of all components
- ◆ Work safely at all times
- ◆ Unless otherwise instructed, tighten fasteners to specified torque

ARB 4x4 ACCESSORIES

Corporate Head Office

42-44 Garden St
Kilsyth, Victoria
AUSTRALIA 3137

Tel: +61 (3) 9761 6622
Fax: +61 (3) 9761 6807

Australian enquiries
North & South American enquiries
Other international enquiries

sales@arb.com.au
sales@arb.com.au
exports@arb.com.au

GENERAL CARE AND MAINTENANCE

By choosing an ARB Bar, you have bought a product that is one of the most sought after 4WD products in the world. Your bar is a properly engineered, reliable, quality accessory that represents excellent value. To keep your bar in original condition it is important to care and maintain it following these recommendations:



Prior to exposure to the weather your bar should be treated to a Carnauba based polish on all exposed surfaces. It is recommended that this is performed on a six monthly basis or following exposure to salt, mud, sand or other contaminants.

As part of any Pre Trip Preparation, or on an annual basis, it is recommended that a thorough visual inspection of the bar is carried out, making sure that all bolts and other components are torqued to the correct specification. Also check that all wiring sheaths, connectors, and fittings are free of damage. Replace any components as necessary. This service can be performed by your local authorized ARB Stockist.

REQUIRED TOOLS FOR FITMENT OF PRODUCT:

Metric socket and spanner sets 8-25mm range	External Circlip pliers
Screwdrivers, Philips and Flat blade	Paint black fast drying
Torque Wrench	Tape Measure
Half round file	Soft Hammer
Metric hex & torx key set	Loctite© 262 or equiv.
Wide masking tape (low tack)	Angle Grinder with Disc for metal cutting
Small Spirit Level	300mm rule

HAVE AVAILABLE THESE SAFETY ITEMS WHEN FITTING PRODUCT:

Protective eyewear		Hearing protection	
--------------------	---	--------------------	---

NOTE: 'WARNING' notes in the fitting procedure relate to OHS situations, where to avoid a potentially hazardous situation it is suggested that protective safety gear be worn or a safe work procedure be employed. If these notes and warnings are not heeded, injury may result.

FASTENER TORQUE SETTINGS:

	SIZE	Torque Nm	Torque lbft
	M4	2.5Nm	1.8lbft
	M6	9Nm	7lbft
For plastic buffers	M6 (trilobial)	6Nm	4.4lbft
	M8	22Nm	16lbft
	M10	44Nm	32lbft
	M12	77Nm	57lbft
	3/8"	44Nm	32lbft

PARTS LISTING

APPLICATION.	PART NO.	QTY	DESCRIPTION
WINCH FITMENT KIT	6151357	2	BOLT SEMS M10 X 30 ZP GRADE 8.8
	180302	10	CABLE TIE 4.8 X 180MM BLACK
	6151073	4	BOLT HX HD 3/8" x 1.5 GR8.8 TZP480
	4581040	4	WASHER FLAT M10 X 25 X 3 ZP
	6151321	2	NUT FLANGE M10
CHASSIS MOUNTING KIT	6151357	8	BOLT SEMS M10 X 30 ZP GRADE 8.8
	6151768	2	BOLT M12 X 1.75 X 170MM
	5818167	2	CRUSH TUBE 17X12.5X82
	4581049	4	WASHER FLAT 1/2"
	5848346	2	PACKER JEEP
	6151574	2	NUT NYLOC M12X1.75 PC8
CONTROL BOX BRACKET KIT	6151262	2	BOLT M8 X 20MM BLACK
	4581075	2	WASHER FLAT M8 BLACK
	3756262	1	CONTROL BOX BRACKET
	6151132	2	NUT FLANGE M8
LIGHT BRACKET KIT	3759320	2	BRACKETS LIGHTS BOLT ON
	4581075	8	WASHER FLAT M8 BLK ZN
	6151547	4	NUT HEX NYLOC M8 x 1.25 GR8.8 ZP
	6151234	4	BOLT M8 x 1.25 x 25 Gd 8.8 BP
BUFFER KIT	3163008	2	BUFFER JEEP WRANGLER
	6151372	8	SCREW PLASTITE, TRILOBIAL 14-10X1
CRUSH CAN EXTENDER KIT	3759295	2	CRUSH CAN EXTENSION
	6151143	6	SCREW WAFER HD 10-32 SELF DRILL
FOG LIGHT FITTING KIT	6151262	4	BOLT M8 X 1.25 X 20 Gd 8.8 BZ
	4581075	4	WASHER FLAT, M8 BLK ZN
	4584294	8	WASHER FLAT M4X9X0.85 TZP 480
	6151132	4	FLANGE NUT M8
	3750391L	1	BRKT FOG LAMP MNT JEEP LH
	3750391R	1	BRKT FOG LAMP MNT JEEP RH
	3750394L	1	BRKT LED FOG MOUNT JL LH
	3750394R	1	BRKT LED FOG MOUNT JL RH
	6151404	8	NUT FLANGE M4
6151254	8	SCREW PAN HD M4X20	
NON-WINCH PAN COVER KIT (ACCESSORY Part No 3550150)	6151132	4	FLANGE NUT M8
	3314940	1	PAN COVER
	6151021	4	BOLT M10 X 1.5 X 20 HEX HD GR8.8 ZP
	4581307	4	WASHER FLAT, M8 X 20 X 2 BLK ZN
NUMBER PLATE BRACKET ASSEMBLY	3757049	1	BRACKET NUMBER PLATE PIVOT
	3757048	1	BRACKET NUMBER PLATE MOUNT
	5848302	2	PACKER RB NYLON
	6151128	4	NUT FLANGE M6 X 1.0 XP
	6151223	2	NUT NYLOC M6 X 1.0 BZ
	6151256	2	SCREW BUTTON HD M6 X 16 SS
	4584327	8	WASHER F M6 X 16 X 1.2 BTZP 480
	6151213	4	BOLT M6 X 1.0 X 20 GD 8.8 ZP

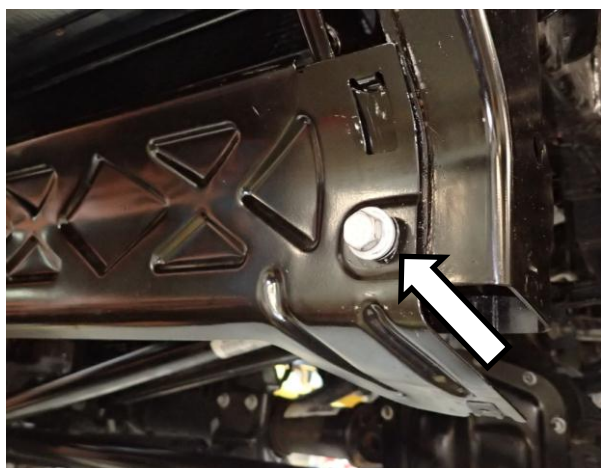
FITTING PROCEDURE



1. Remove plastic splash panel from underneath bumper by removing 2 lower screws and prying apart 8 plastic grommets,



For Rubicon vehicles fitted with steel under panel, remove by unbolting from chassis brackets and lower edge of steel bumper.



2. Remove front steel panel by removing both mounting bolts.

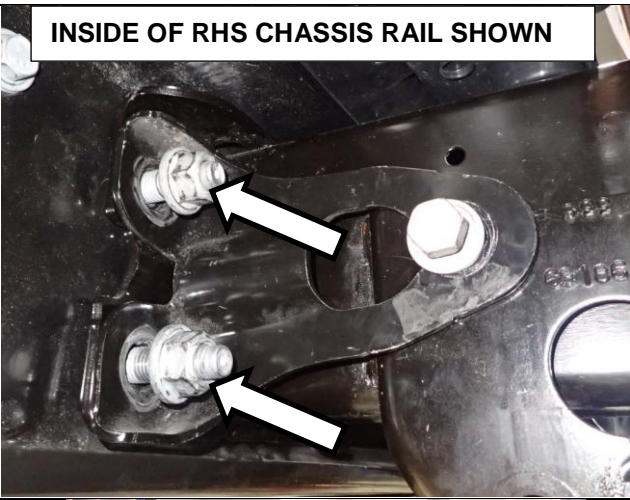


3. Disconnect fog light harness, located on the RHS chassis rail, access from wheel arch.



4. Remove 2 plastic grommets from top of bumper with flat bladed screw driver.

INSIDE OF RHS CHASSIS RAIL SHOWN



5. Undo 8 flange nuts from behind front bumper.



OUTSIDE OF LHS CHASSIS RAIL SHOWN



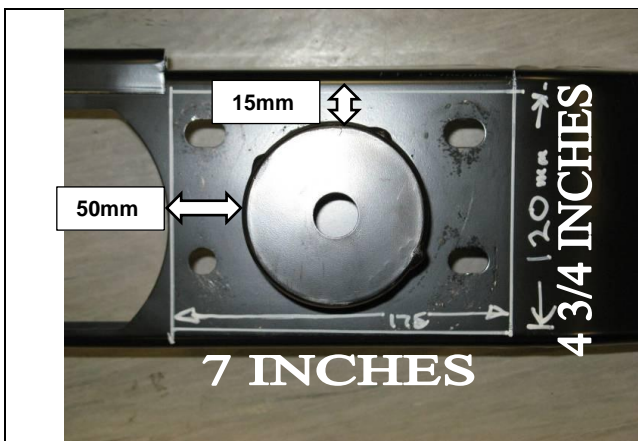
6. Remove OEM bumper from vehicle.



7. Remove steel impact beam from bumper.



5. For Rubicon vehicles fitted with steel bumper, impact beam is a two piece design; use a chisel to remove lock washers to disassemble from bumper.



- Once impact beam is removed, mark out a 175x120mm section onto the impact beam on both sides.



- Carefully cut marked section using an angle grinder fitted with a cutting disc.

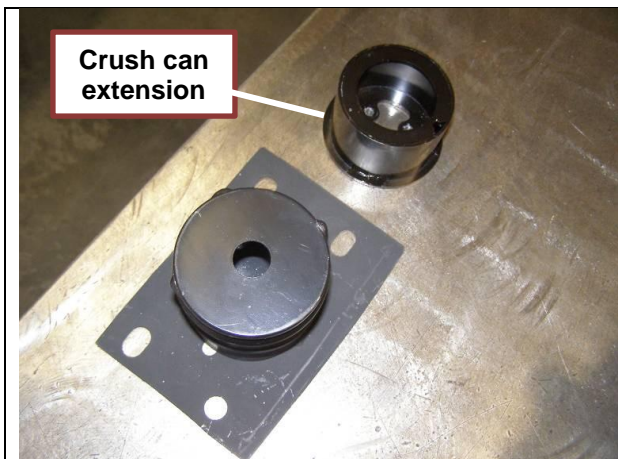


Warning: Grinding operations can result in flying metal debris, safety glasses should be worn.



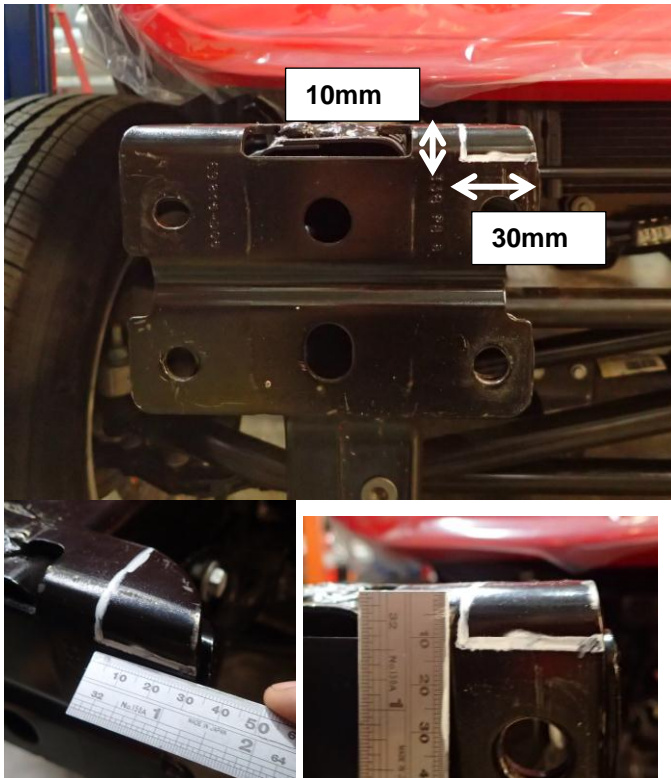
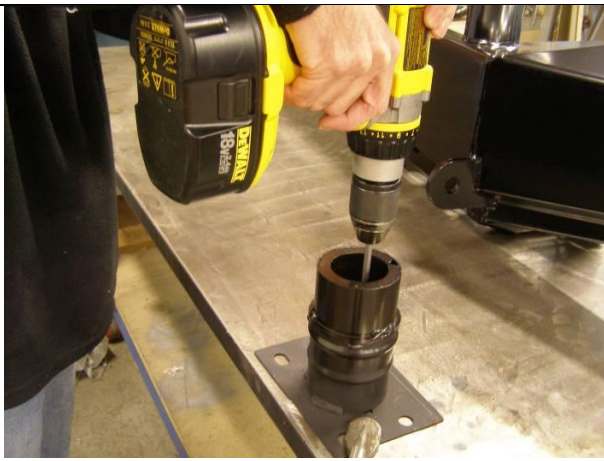
- Retain crush cans and dispose of the Impact beam.

Clean up any sharp edges or burs with a file. Apply black spray paint to cut edges to Prevent corrosion.



- Attach crush can extensions supplied with bull bar to crush cans using 6x self-drilling screws supplied with fitting kit.

Note: When attaching crush can extensions to crush cans, ensure both parts are concentric to one another.



If fitting a Warn Zeon or 9.5XP winch continue to step 12, for all other winches skip to step 13 below.

12.

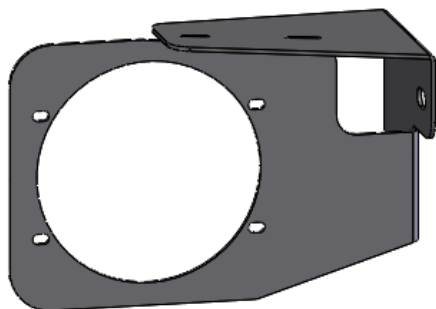
- A) Mark a section on the RHS chassis rail front mounting face 10mm from top edge and 30mm from inside edge. (winch motor side)
- B) Cut away marked section using an angle grinder and cutting disc
- C) Remove any sharp edges with a file.
- D) Apply black spray paint to cut edges to prevent corrosion.
- E) If fitting a Zeon winch, repeat for LHS chassis rail. (NOT REQUIRED FOR 9.5XP)



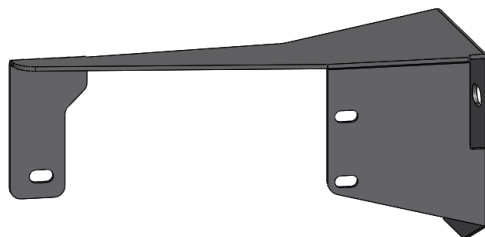
Warning: Grinding operations can result in flying metal debris, safety glasses should be worn.



For Vehicles fitted with LED fog lights, use the following brkts (discard alternative):
(RHS SHOWN)



For Vehicles fitted with halogen fog lights, use the following brkts (discard alternative):
(RHS SHOWN)

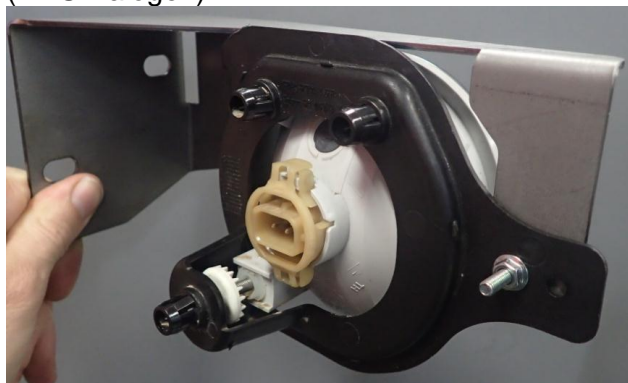


For Rubicon vehicles fitted with steel bumper, supplementary fit kit 3550230 is required for fitment of fog lamps. Refer to instruction number 3783611 supplied in kit.

(RHS LED)



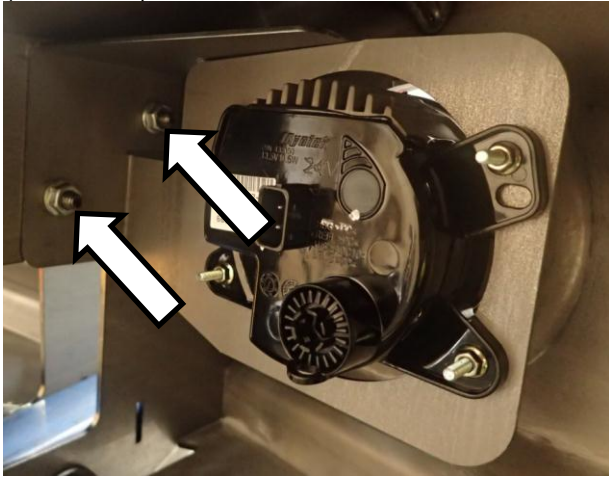
(RHS Halogen)



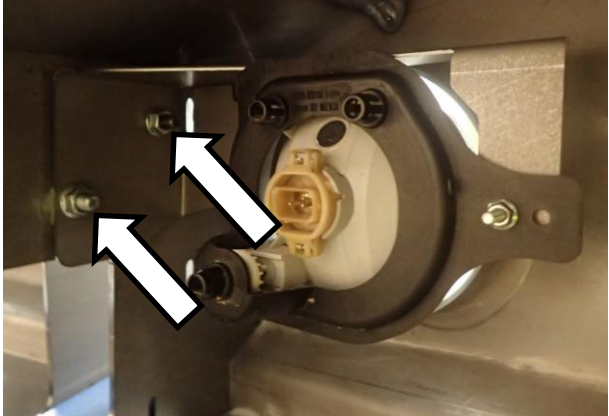
13. Secure front of fog light to rear of mounting bracket using M4 fasteners supplied with fitting kit.

4 fastener sets per LED lamp, 3 sets per halogen lamp.

(RHS LED)



(RHS Halogen)




14. Secure fog light assembly to bull bar using M8 fasteners supplied with fog light fitting kit.

(RHS LED)

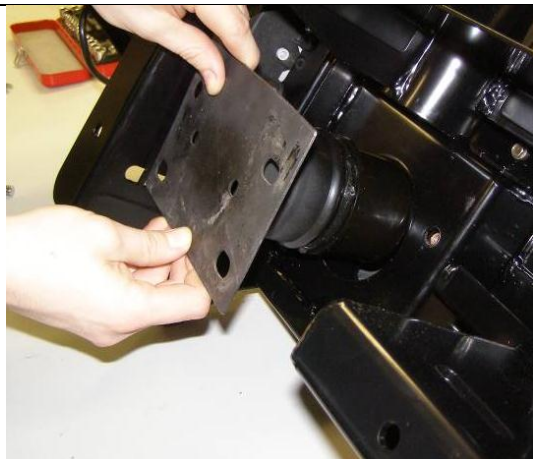
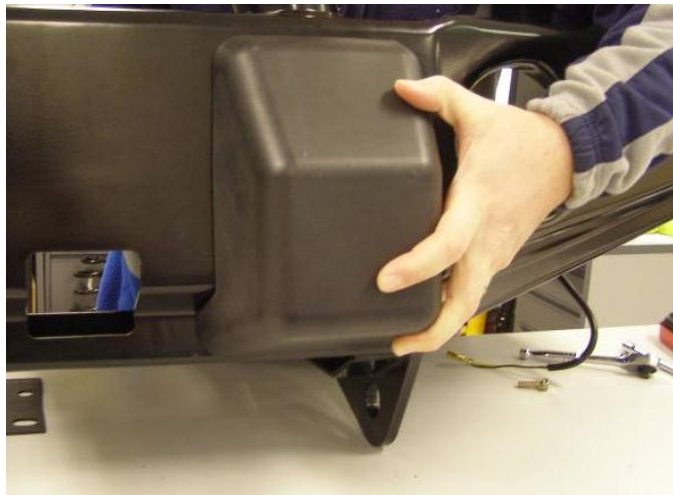


(RHS Halogen)

15. Adjust fog light so that it sits central to the fog light aperture in the bull bar. Tighten both bolts on each side of bar to torque specification.

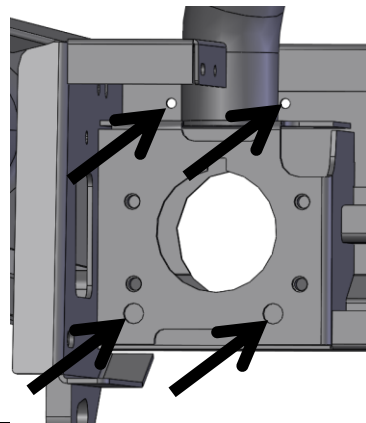
 M8 - 22 Nm.

Note: Final adjustment of the fog light can be carried out once the bull bar is fitted to the vehicle.

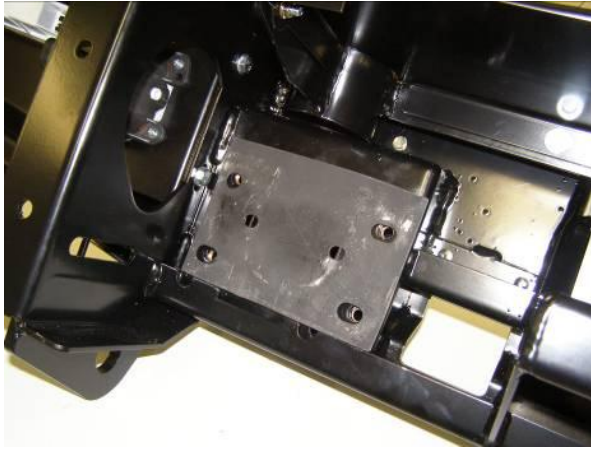


16. Position bar on a flat surface upside down so that you have access to both front and rear sections of the bull bar.

17. Fit buffers to the bar by holding each buffer against the front of the bull bar and securing from the rear using 8x 6mm trilobial screws supplied with buffer kit (4 per buffer).



18. Position crush cans into mounting bracket openings located at the rear of the bar.



Note: To hold crush can plate in position, smear a small amount of silicon onto mounting face.



19. With the assistance of a friend or lifting device, present the deluxe bar to the vehicle.



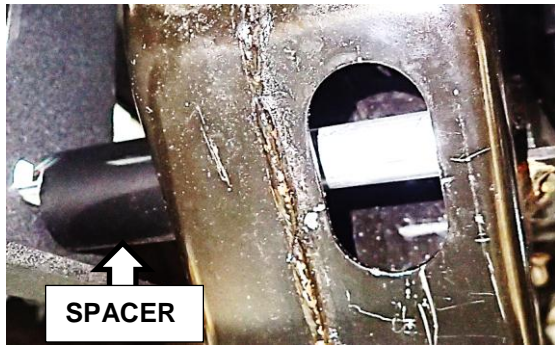
20. Loosely fasten bull bar to vehicle chassis using M10 sems fasteners supplied in chassis mounting kit.

Note: If your vehicle is not going to be fitted with a winch, install pan cover kit ACCESSORY Part No 3550150 to bull bar before mounting bull bar to vehicle chassis. (Refer to Figure below)



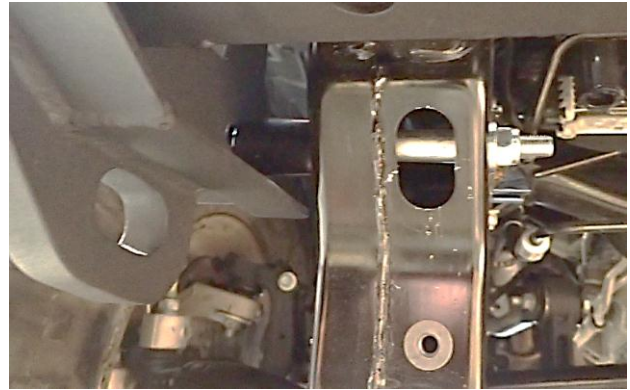
21. Assemble M12x82mm crush tube into lower section of chassis rail via the opening at the front.





22. Position spacer in between bull bar mounting bracket and chassis


Loosely fasten bull bar to chassis using M12 fastener sets supplied.




23. Tighten all chassis mounting fasteners to correct torque specification.

Tighten M10 fasteners first and then proceed to tighten M12 fasteners.



 M10 - 44 Nm.

 M12 - 77 Nm.



24. Assemble number plate components. Ensure assembly is not over tightened so that it may pivot with a reasonable amount of friction.




25. Mount number plate bracket assembly to bull bar using M6 fasteners supplied with number plate fitting kit.

WINCH INSTALLATION – FITTING PROCEDURE

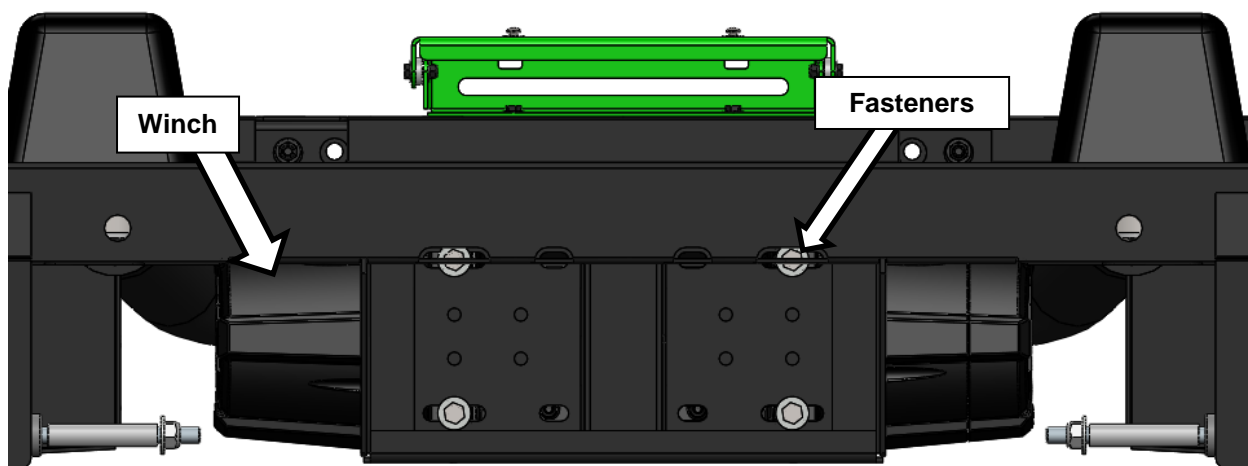
26. Lower winch onto bull bar mounting platform carefully aligning with slots.
Fit 3/8"/M10 nuts into winch retaining cavities if applicable.
Loosely fasten winch into position from underneath the vehicle with 3/8"/M10 bolts.
Check lateral alignment of winch relative to bull bar.

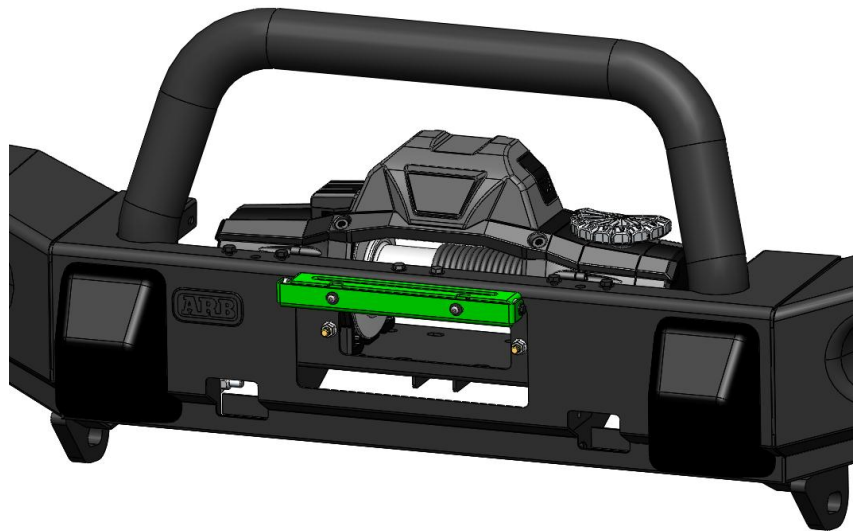
Tighten fasteners to torque specification.

 M10 - 44 Nm.

 3/8" UNC - 44 Nm.


****NOTE: DO NOT INSTALL Roller Fair Lead / Hawse UNTIL AFTER DRIVING LIGHT FITMENT****



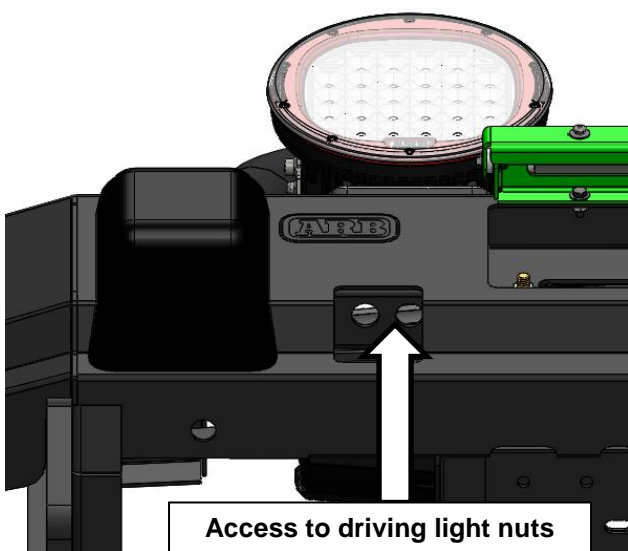


For winch models that come with a control box to be mounted separately to the winch, complete step 27.

27. Fit control box bracket to bar using M8 fasteners supplied with control box bracket kit. Fit control box to control box bracket using fasteners supplied with winch as per winch supplier fitting instructions.

 M8 - 22 Nm.


Note: Use cable ties to keep power cables together and keep clear of all moving components and sharp edges.

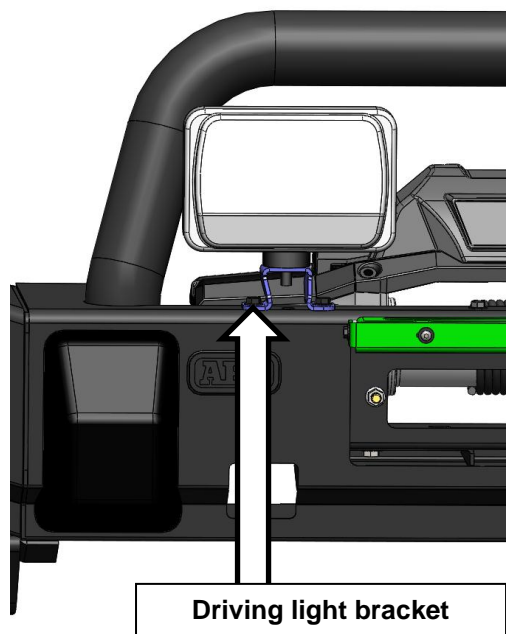


If the vehicle is to be fitted with ARB intensity LED driving lights, refer to step 28.

28. Position driving lights onto bull bar aligning holes in bracket with those on top surface of bull bar. Fasten driving light brackets using M8 fasteners supplied with light bracket kit. A socket extension will be required to fasten M8 nyloc nuts, accessing through the HiLift mount opening. Fasten anti-theft nut and M12 bolt using Intensity pinned socket supplied with ARB Intensity driving light kit.


 M8 - 22 Nm.

 M12 - 77 Nm.




If the vehicle is to be fitted with IPF driving lights, refer to step 29.

29. Fasten driving light brackets to bull bar using M8 fasteners supplied with light bracket kit. Fix driving lights to brackets using fasteners supplied with IPF driving light kit.

 M8 - 22 Nm.



30. Fit the roller fair lead/hawse to the bull bar using M10 or 3/8" fasteners supplied with winch fitment kit.

 M10 - 44 Nm.



31. Refit OEM front stone panel with original fasteners which were removed in step 2.

For Rubicon vehicles fitted with electronic Sway bar disconnect feature, supplementary fit kit 3550230 is required for fitment of sway bar guard. Refer to instruction number 3783611 supplied in kit.

FITTED PRODUCT – Shown with Warn Zeon winch & AR32 driving lights

