



www.hylineoffroad.com

1507 C West Park Avenue ~ Perkasio, PA 18944
Tel: 1.888.495.4631 ~ Fax: 215.257.4364

Proudly Made In USA

Installation Instructions:

JK Recessed Crawler Front Bumper
Part Number: 400.100.190

Vehicle Fitment:

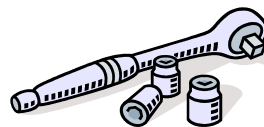
2007 - Present Jeep Wrangler
& Unlimited

Parts List

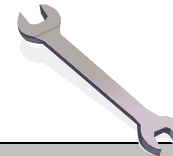
Qty:

- 1 Crawler Front Bumper
- 1 Winch Delete Plate
- 8 7/16-20 Hex Nuts Grade 8
- 10 7/16" Flat Washer Grade 8
- 10 7/16" Lock Washer Grade 8
- 2 7/16-20 x 1-1/2" Hex Bolts Gr8
- 7 1/4-20 x 3/4" Cap Screw SS
- 7 1/4" Lock Washer SS
- 14 1/4" Flat Washer SS
- 7 1/4-20 Hex Nut Stainless
- 2 Weldnut Tabs 7/16-20 Thread

Tools Needed



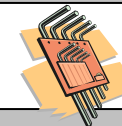
Ratchet
18mm Deep Socket
11/16" Deep Socket
7/16" Socket
5/8" Socket
Torque Wrench



5/8" Wrench



1/2" Drill Bit &
Battery or Electric
Drill



5/32" Hex Key

Congratulations on your purchase of the Hyline Offroad Recessed Crawler Front Bumper. Our Bumpers are completely manufactured in our facility located in Perkasio, PA. They are designed and engineered by Offroad enthusiasts just like you to be rock solid at an affordable price. Hyline Offroad would like to thank you for your recent purchase and look forward to serving you in the future.

Hyline Offroad Staff

PLEASE READ INSTRUCTIONS BEFORE BEGINNING INSTALLATION

Front Bumper Installation

Step 1 – Remove plastic factory frame rail cover by unscrewing two plastic screws. Be careful while unscrewing these. The plastic is very weak and is easy to strip out. You will *NOT* be reusing this cover. Also remove the factory plastic air dam, which is located underneath the bumper.

Step 2 – If your vehicle is equipped with factory fog lights you will need to unplug them. Pull out or cut the plastic wire ties that are holding the wires in place (3-5 Wire Ties) **DO NOT CUT WIRES**. Then, slide stock bumper out far enough to unplug the fog lights.

Step 3 – Remove Stock bumper by unbolting the eight (8) 18mm nuts From backside of bumper. Nuts are located on the inside and outside of frame rails (See Figure 1 - Outside frame rails shown) Say goodbye to that flimsy plastic stock bumper.

Step 4 – You will not be re-using the factory fog lights with this bumper So you can leave them in the stock bumper or remove them.

Step 5 – While bumper is removed, now is a good time to run any auxillary lighting wires.

If Applicable

Disconnect all Aftermarket External Lighting Wiring that is presently attached to existing bumper.

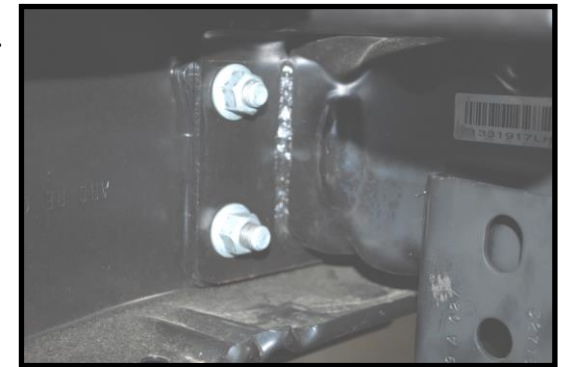
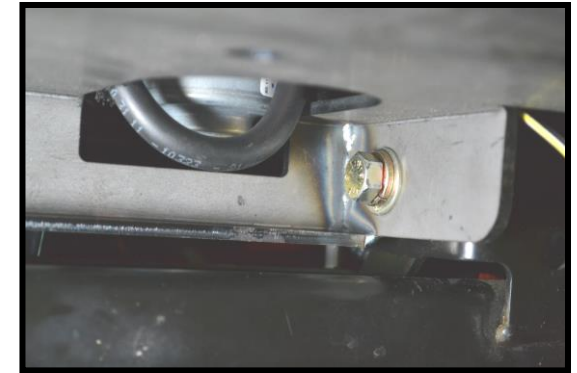


Figure 1

Figure 6

Step 6 – 2012 & Newer Models Only... Using ½” bit, Drill thru slotted hole on drivers side frame mount. The hole on the outside of the frame is round, however the inside hole is slotted. You’ll need clearance in the slotted hole for installing the 7/16-20 bolt into winch plate. (See Figure 6 for reference of hole location)



Step 7 – Now test fit the bumper with your winch to verify clearance of Winch and Vacuum Canister (2012 & Newer Models). If necessary you may need to relocate your vacuum canister by purchasing a relocation kit and cut bracket arms on frame. If your winch fits without contacting anything proceed to Step 8.

Step 8 – Install Hyline Front Bumper onto vehicle. Use supplied 7/16-20 Grade 8 Nuts, Lock Washers and Flat Washers to assemble bumper to frame. **DO NOT TIGHTEN**

Step 9 – Use supplied 7/16-20 Hex Bolts, Lock Washers, Flat Washers and Weldnut Tabs to fasten winch mounting section of bumper. The Weldnut Tab is placed up inside of the frame vertical frame tube directly behind the hex bolt shown in Figure 6. (See Figure 6)

Step 10 – Tighten all 7/16-20 Bolts to 78 ft/lb torque and recheck other bolts for tightness.

Step 11 – If you're not installing a winch you can install the provided winch Delete plate to cover the open area. Use 1/4-20 Stainless Button Head Cap Screws with Lock Washers and Flat Washers to fasten to bumper.

Figure 7



Optional Winch Installation

Step 1 – Bolt on Fairlead, supplied with winch, to the bumper and tighten.

Step 2 – Mount Winch onto Bumper using supplied hardware with winch.

Step 3 – Tighten all Winch Bolts to manufacturers torque specifications.

Now you're ready for the ROCKS!!

Send your OFFROAD pictures to pics@HylineOffroad.com . If we choose any one of your pictures to be used on our website, We send you a FREE Hyline Offroad T-Shirt.



Attention

Installation instructions provided must be read and followed exactly when installing product. Failure to do so could potentially result in injury or death of any occupants in the vehicle. **WEAR SEAT BELTS AT ALL TIMES WHEN DRIVING!**

Though our products are rugged, they are primarily designed and built to enhance the appearance of the vehicle and will not protect from death or injury in the event of an accident. Adhere to all vehicle manufacturers specifications.