



## INSTALLATION INSTRUCTIONS

# 2007-2018 JEEP® WRANGLER JK® REFLECT DOOR MOUNT



PRODUCT INCLUDES:

- (2) Mount #41646
- (2) REFLECT Puck Mounts

\* LIGHTS SOLD SEPARATELY

**\*THIS MOUNT FITS THE FOLLOWING LIGHTS:  
(2) REFLECT®**

### **IMPORTANT**

**THANK YOU FOR PURCHASING RIGID PRODUCTS FOR YOUR VEHICLE.**

Please read through all of these Instructions and tips before proceeding with the installation.

We do our best to provide a simple installation process for all applications however a professional installation is always recommended.

**Always disconnect any power sources connected to your vehicle  
before servicing fuses or electrical systems.**

## STEP 1

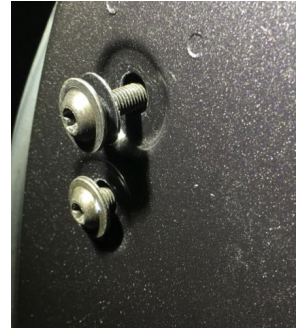
Begin by removing the factory mirrors. If the mirrors are remotely adjustable or contain a defogger, it is advisable to remove the door panels first to gain access to the electrical connections within the door to unplug the mirror. The factory mirror can be removed by the two Torx bolts on the interior of the door.

See Figures 1 & 1.1

FIGURE 1



FIGURE 1.1



## STEP 2

Begin installation of the new Reflect mount brackets by installing the two coupling nuts, along with the two shorter 5/16"-18 button-head cap screws and washers as shown in Figures 2 and 2.1, with the coupler inside the door. Tighten the couplers utilizing a 1/2 deep socket. Note: In Figure 2.1, the wire is shown looped through the door to power the Reflect lights. In some earlier JK models without power accessories to the mirror, this hole may have to be drilled. Utilize the RIGID REFLECT door mount gasket/mounting plates for a template to drill this minor hole if necessary.

See Figures 2 & 2.1

FIGURE 2



FIGURE 2.1



## STEP 3

Utilizing a 7/32" hex bit, remove the pre-installed mounting clamp bases from the Reflect mirror assemblies.

See Figure 3

FIGURE 3



## STEP 4

The Reflect flat mount base kit includes all necessary hardware for installation, including a longer flat head socket cap screw to attach the new puck. Retain the unique washer for re-installation. See Figure 2.

See Figure 4

FIGURE 4



## STEP 5

Install new base as shown in Figure 5. This bolt may have to be loosened to allow rotation and clocking of the base and angle ring to allow the desired angles side to side, and relative to the vehicle for optimal appearance.

See Figure 5

FIGURE 5



## STEP 6

Attach the mirror assembly to the Reflect mount plate as shown in Figure 6 utilizing the provided 1/4-20 button head screws. Route the wiring through the center hole and install the two mounting bumpers as well.

See Figure 6

FIGURE 6



## STEP 7

Press in the rubber grommet into the backing plate. Feed thru the wire as shown in Figure 7. Soapy water can be helpful in allowing the wire to pass through easier.

See Figure 7

FIGURE 7



## STEP 8

Attach the other 5/16"-18 bolt to the outside of the mount as shown in Figures 8 and 8.1. Be sure to place the trim plate on the outside to cover the wire routing, and place the gasket on the inside mounting surface to mate against the body.

See Figures 8 & 8.1

FIGURE 8



FIGURE 8.1



## STEP 9

Tighten any remaining hardware and replace interior panels. Installation is now complete.

See Figure 9

FIGURE 9



**Wiring: Wire your lights according to the instructions included with the light. Take care to avoid any heat sources and sharp or abrasive surfaces.**

**Your installation is now complete.  
Welcome to the Rigid Nation!**

## WARRANTY INFORMATION

For warranty information, visit [www.rigidindustries.com/about/warranty](http://www.rigidindustries.com/about/warranty)

779 N Colorado St, Gilbert, AZ 85233 • 855-760-5337  
[www.rigidindustries.com](http://www.rigidindustries.com)

REFLECT, RIGID, and Rigid Industries are registered and/or common law marks owned by JST Performance, LLC, a Delaware limited liability company d/b/a Rigid Industries.

11-12823-A