



www.hylineoffroad.com

1507 C West Park Avenue ~ Perkasio, PA 18944

Tel: 1.888.495.4631 ~ Fax: 215.257.4364

## Proudly Made In USA

**Installation Instructions:**  
 XJ Standard Front Bumper  
 Part Number: **500.100.100**

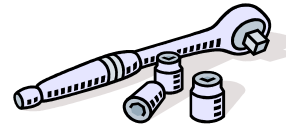
**Vehicle Fitment:**  
 1984 – 2001 Jeep Cherokee

### Parts List

Qty:

- 1 Standard Front Bumper
- 1 Right Mtg. Bracket
- 1 Left Mtg. Bracket
- 4 7/16-14 x 1" Gr. 8 Hex Bolts
- 3 7/16-14 x 3.5" Gr. 8 Hex Bolts
- 24 7/16" USS Flat Washer Gr. 8
- 15 7/16" Split Lock Washer Gr. 8
- 8 7/16-20 Hex Nuts Gr. 8
- 7 7/16-14 Hex Nuts Gr. 8
- 2 1/4-20 x 1" Gr. 5 Hex Head Bolts
- 2 1/4" Gr. 5 Lock Washers
- 4 1/4" Gr. 5 SAE Flat Washers

### Tools Needed



Ratchet  
 7/16", 5/8", 8, 10, 15 & 17 mm  
 Sockets  
 10mm Wrench  
 T-25/30 & T-55 Torx Socket



Drill  
 9/32 Bit



Safety  
 Glasses

Congratulations on your purchase of the Hyline Offroad Standard Front Bumper. Our Bumpers are completely manufactured in our facility located in Perkasio, PA. They are designed and engineered by Offroad enthusiasts just like you to be rock solid at an affordable price. Hyline Offroad would like to thank you for your recent purchase and look forward to serving you in the future.

*Hyline Offroad Staff*

**\*\*\*IMPORTANT\*\*\***

Unlike many other designs, Our ORIGINAL design allows you to install your winch AFTER installing the bumper. So if you wanted to add a winch down the road our design allows you to do so without removing your bumper. To install your winch after mounting the bumper follow the instructions starting on Page 5.

**Front Bumper Installation**

**If Applicable**  
Disconnect all External Lighting Wiring that is presently attached to existing bumper.

**Step 1** – Slightly pull away stock inner wheel well plastic to gain access to unbolt the factory plastic end caps. Using a 10mm socket remove the 4 bolts from each of the end caps on each side. The end caps are also held onto some bumpers with a rivet that you Do Not have to remove. You can simply let the end caps hang as seen in Figure 1.

**Step 2** – Unbolt the factory Vacuum pump using the T-25 or 30 Torx socket.

**Step 3** – Using a 15mm socket remove the bumper Bolts (three per side) from the brackets on the uni-body. See Figure 2 which already shows the bumper brackets removed, but points out the bolt locations. We provide replacement hardware for front two bolts in case the stock threaded clips break. Save rear most bolt for re-installation.

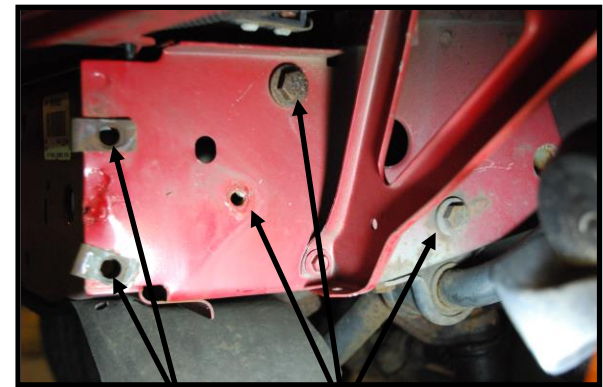
**Step 4** – On some vehicles with factory tow hooks you may need to Use a T55 Torx Socket to remove a mounting bolt further back On the brackets. The bumper should now be free to remove.

**Figure 1**



Remove 2 Screws For Vacuum Canister Here

**Figure 2**



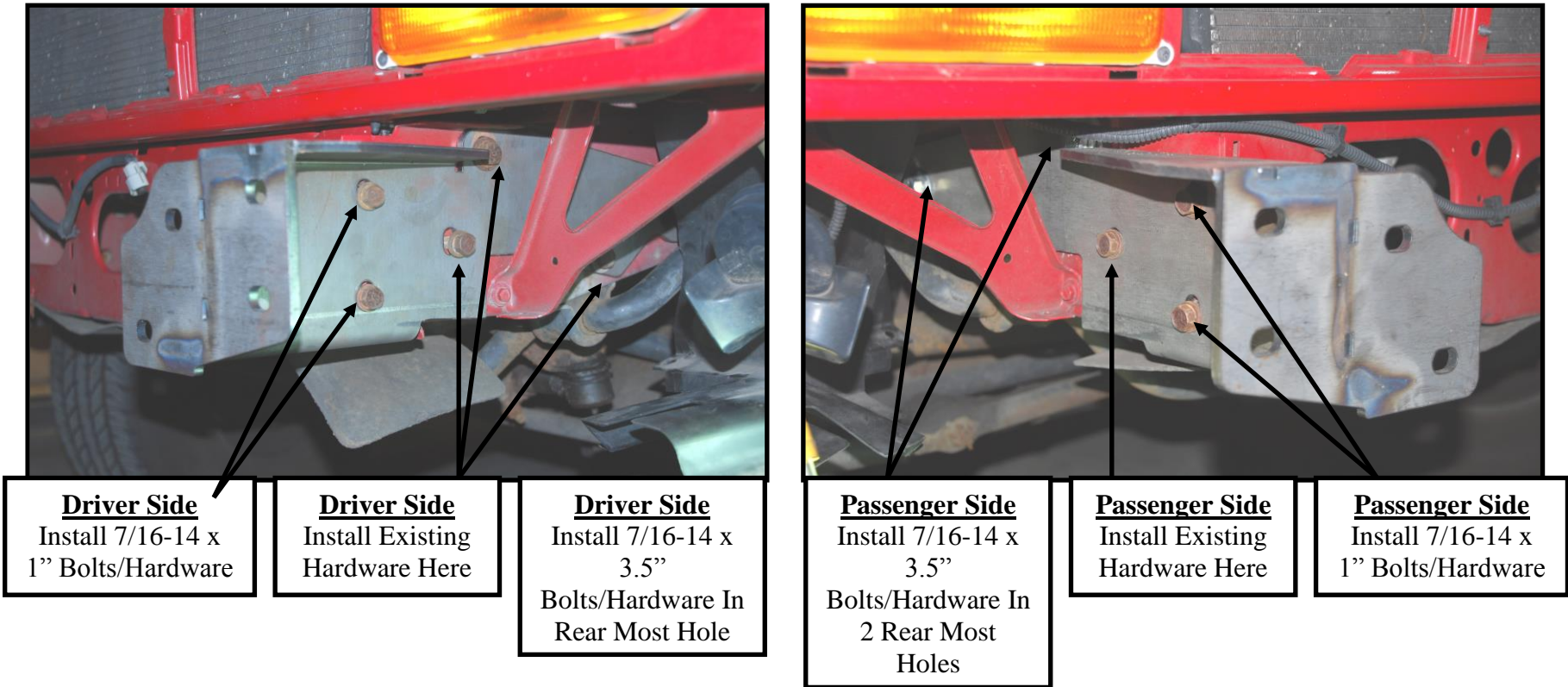
Remove 3 Bolts From Uni-Body

Save These Bolts

**Step 6** – Using a 17mm Socket remove the two bolts on drivers side and save for re-installation (See Figure 2)

**Step 7** – Install the Driver & Passenger Side Brackets as shown in Figure 3. Do NOT Tighten bolts at this time.

**Figure 3**



**Step 8** – Using two people (For Easier Install) slide front bumper in place by guiding the welded studs through slotted holes on the mounting brackets you just installed. Hold the bumper in place and install supplied 7/16-20 (Fine Thread) Hex Nuts with Flat Washer and Lock Washer (8x). Do NOT Tighten nuts yet.

**Step 9** – Center the bumper from left to right on the Jeep. Once centered tighten all 8 hex nuts at this time. Now locate the bumper so it's setting level from top to bottom. Once level you can tighten all Bolts and Hardware installed in Step 7 on mounting brackets.

**Step 10** – Relocate the Vacuum Canister

(Black Ball Shaped Part) onto the body support bracket.

See Figure 4. To do this you'll need to drill two 9/32" Holes into the support bracket where you want to mount the canister. Then using the supplied 1/4-20 x 1" bolts and hardware affix the canister to the support bracket.

**Step 11** – Reattach your plastic inner wheel well if necessary.

Some trimming of the plastic may be desired to eliminate excess areas. We've found a dremel tool with cutoff wheel to be the easiest tool to use for cutting contour shapes in plastic.

**Figure 4**



**Drill Holes and Fasten In  
These Locations**

### **Optional Winch Installation**

Step 1 – Bolt on Fairlead supplied with winch, to the Fairlead Mount welded onto bumper. Tighten Bolts

Step 2 – Mount Winch onto Bumper using supplied hardware with winch. Install the two bolts closest to the grille first. You may have to tip the winch forward slightly to get bolts started in the winch feet holes. Then install remaining two bolts.

Step 3 – Tighten all Winch Bolts to manufacturers torque specifications.

**Now you're ready for the ROCKS!!**