

CFE PRODUCTS
1485 WILMINGTON PIKE
WEST CHESTER PA. 19382
610-358-1886

JEEP CJ & WRANGLER
HARD TOP LIFTGATE LOCKING
ROD
MODEL: JW - HTWR



CAREFULLY READ ALL INSTRUCTIONS
BEFORE PROCEEDING WITH ASSEMBLY AND
OPERATION!

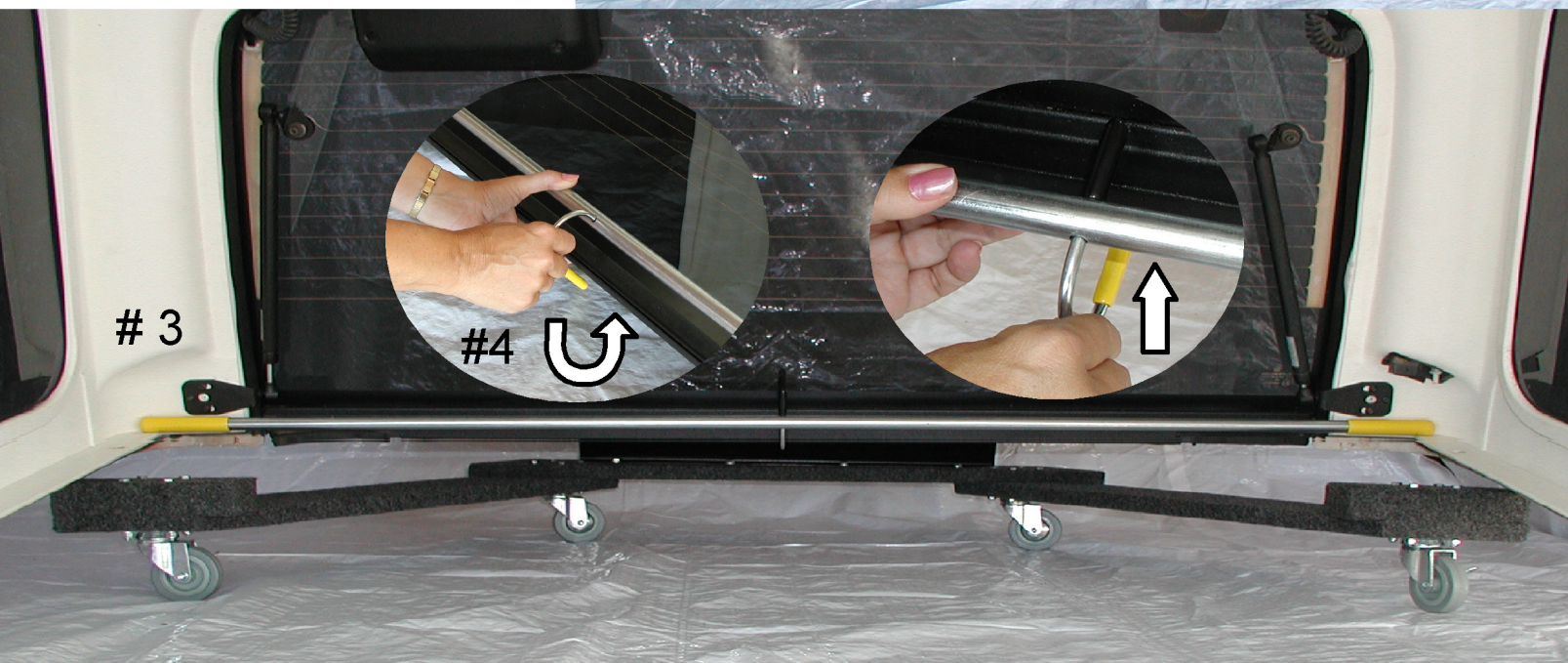
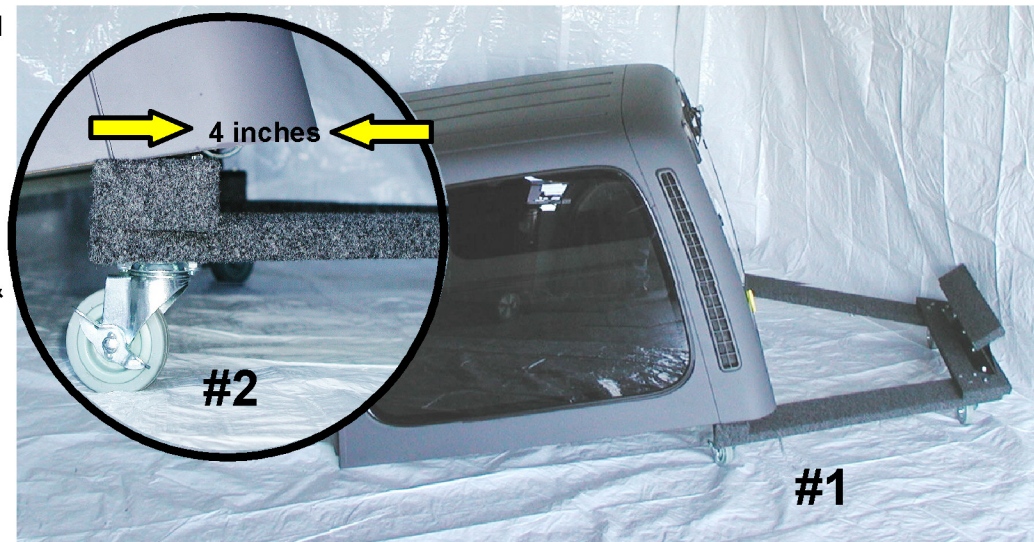
The rear window liftgate MUST be secured in the closed position or damage to top may occur while positioning the hard top onto the cart. This is a mandatory procedure. It is highly recommended to purchase the Liftgate Locking Rod #12020.350 to secure the rear window.

1. Make sure to **LOCK** the front casters before placing hard top on cart. Place the hard top on the floor with the back end resting on the end blocks.

[The rear window must not contact the end blocks.] BEFORE PROCEEDING the rear window MUST be locked or clamped before placing the top into position. YOU CAN PURCHASE THE OPTIONAL LIFTGATE LOCKING ROD FROM QUADRATEC MODEL # 12020.350

LIFTGATE LOCKING ROD INSTALLATION INSTRUCTIONS

Rest the hard top on the cart end blocks. Allow 4 inches between the back of the top and the back of the end block.[fig#2]. Install the locking rod from under the hardtop. Position the locking rod as shown in fig. # 3 & 4 squeezing the rod and the rear window together , rotate the rod so the yellow end cap ends up on the outside of the window .



ANY COMMENTS OR QUESTIONS ? CALL BOB 610-358-1886