

# Installation Instructions

**FITS:**  
**18-20 Jeep Wrangler JL**  
**20 Jeep Gladiator JT**

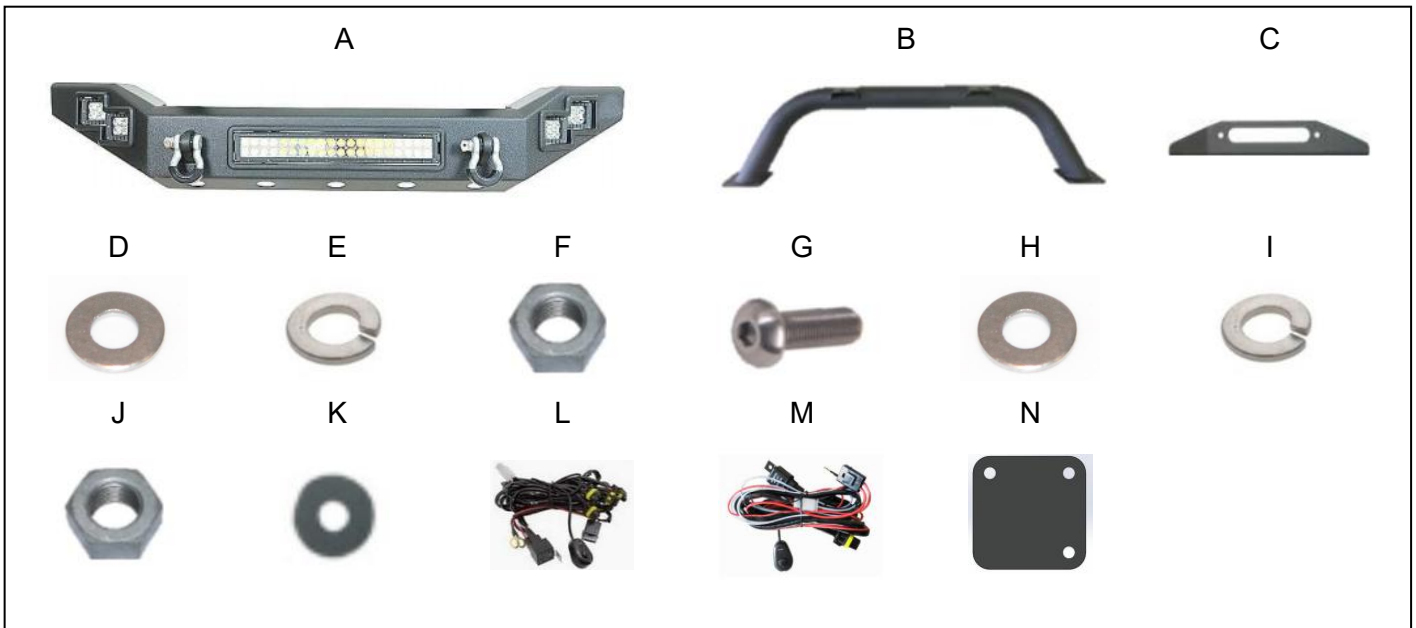
**Front Bumper**

## TOOLS NEEDED

Ratchet	13mm Wrench	5/8mm Wrench
Fastener Pry Tool	18mm Deep Socket	#2 Phillips Driver

## COMPONENTS & HARDWARE

#	QTY		#	QTY	
A	1	Front Bumper	B	1	Bumper Cross Bar
C	1	Fairlead	D	8	M12 Flat Washer
E	8	M12 Split Washer	F	8	M12x1.75 Hex Head Nut
G	9	M8x1.25 Button Head Bolt	H	9	M8 Flat Washer
I	9	M8 Split Washer	J	9	M8x1.25 Hex Head Nut
K	9	M8 Nylon Flat washer	L	1	1 to 4 Wire Harness
M	1	1 to 1 Wire Harness	N	2	Protection Pads



Please take a few minutes to read and thoroughly familiarize yourself with the installation procedures outlined in this manual. Following the steps as outlined will save you time and help reduce mistakes. Once the instructions are reviewed, if you feel that you are not capable of safely installing the parts seek the help of a qualified installation expert to help you complete the job. The manufacture is in no way responsible for any personal injury or vehicle damage that may occur during the installation.

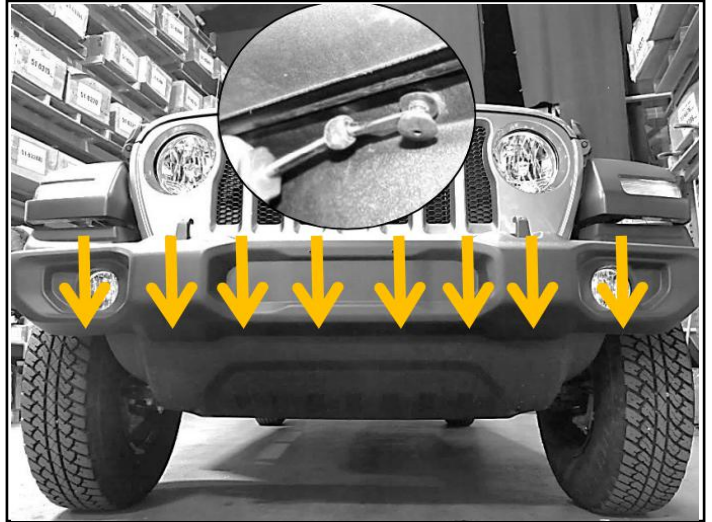
### California Proposition 65 Warning!

This product may contain one or more chemicals known to the State of California to cause cancer and birth defects or other reproductive harm. For more information go to [www.P65Warnings.ca.gov](http://www.P65Warnings.ca.gov).

## Removing Factory Bumper



**Step 1.**  
Using a plastic clip removal tool or similar tool locate and remove two factory clips shown above. Discard factory clips.



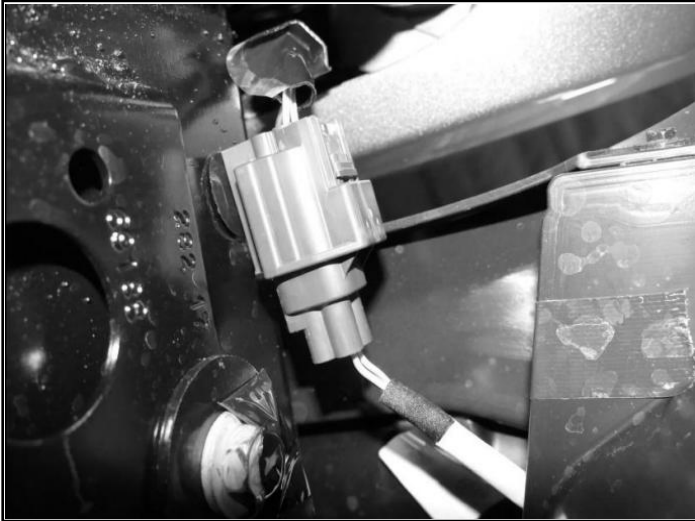
**Step 2.**  
Working under the Jeep locate and 8 plastic fasteners along the bottom front edge. Use a fastener pry tool to remove them. Set fasteners aside in a protected area.



**Step 3.**  
Using a 8mm socket locate and remove 2 factory bolts holding the factory skid plate onto the bumper. Remove factory skid plate from vehicle. Discard factory hardware and skid plate.



**Step 4.**  
Using an 18mm deep socket, remove the 4 factory mounting nuts (2 on each side of the frame) located next to the outside of your JL's frame rails. Discard factory hardware. Repeat process for the other side of the Jeep.



**Step 5.**  
Locate and disconnect factory fog light harness.



**Step 6.**  
With help from an assistant firmly pull the front bumper off the frame rails and set it aside in a protected area.

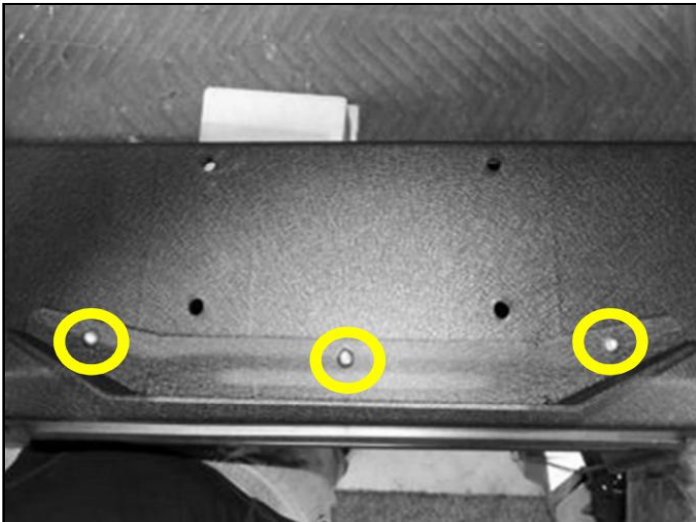
## Installing Front Bumper



**Step 1.**  
Working on work bench.  
Install supplied bumper hoop onto bumper as shown. Line up the holes in the hoop with the holes in the bumper.



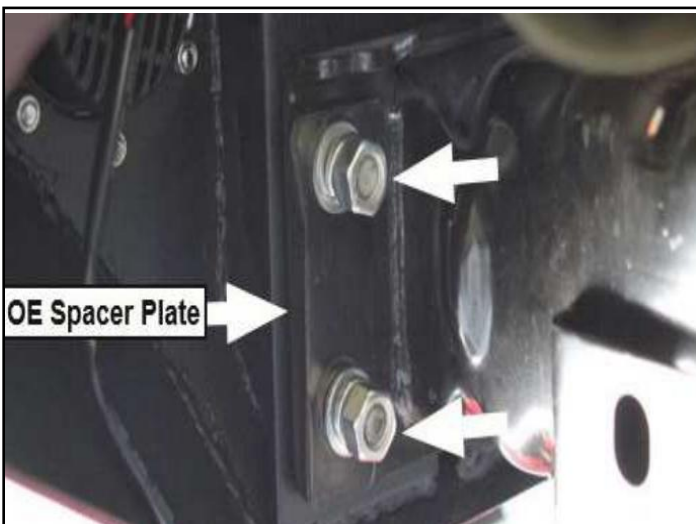
**Step 2.**  
Place allen head bolt M8x1.25x25mm and nylon washer through the holes in the bumper cross bar and through the bumper holes. Place a supplied M8 flat washer with supplied M8 split washer onto the end of bolt.  
Start a supplied M8x1.25 hex head nut at the end of bolt. Tighten down using a 5/32 allen wrench. Repeat step for remaining bolts. Repeat step for other side.



**Step 3.**  
Place supplied fairlead onto bumper. Line up the holes in the fairlead with the holes in the bumper. While holding the fairlead into position place a supplied allen head bolt M8 and nylon washer through the holes in the fairlead and through the bumper holes. Place a supplied M8 flat washer and supplied M8 split washer at the end of bolt. Start a supplied M8x1.25 hex head nut at the end of bolt. Tighten down using a 5/ 32 allen wrench.



**Step 4.**  
Install supplied bumper onto vehicle as shown. Line up bumper holes with OE frame holes. Note: You will need help from an assistant to hold bumper in place while the nuts are installed.



**Step 5.**  
Install the factory spacer plates onto bumper bolt. Place supplied M12 flat washer and M12 split washer onto bolt. Start a supplied M12x1.75 hex head nut at the end of the bolt. Repeat step for remaining nuts. Tighten down using 18mm socket. Repeat step for other side of bumper.



**Step 6.**  
Proceed to make electrical connections for the LED lights. If you are not qualified to make the proper connections, we highly recommend that you contact an installation expert to complete the connections.