

Jeep TJ 97-Up Trail Armor Pocket Style Rocker Panels Set Part # 14008

Rev A 10-05

Prior to Installation:

- A) **Fit:** Verify you have ordered the correct Body Cladding for your vehicle make and model and check their fit.
- B) **Painting:** (Optional) if paint is desired it must be done prior to installing parts on the vehicle. Clean outer surface with a good grade degreaser. **DO NOT USE LACQUER THINNER OR ENAMEL REDUCER AS A DEGREASER.** Wipe outer surface thoroughly with a tack rag prior to paint. Paint parts using a high quality enamel, or polyurethane automotive paint. (Application of a primer coat is optional)
- C) **Remove Factory Stone Guard:** Remove the factory stone guard using an 8mm socket and ratchet. Discard.

TOOLS FOR EASY INSTALLATION

- Utility Knife
- Alcohol Wipe
- Ratchet with 8mm Socket

Kit Supplied Hardware:



Torx Head
Screw
(6 per part)



Washer
(6 per part)



Tuf-Lok
Fastener
(3 per part)



Torx Bit
(1 included)

INSTALLATION PROCEDURES

IMPORTANT NOTE: Ambient Temperature – During installation: the vehicle, the parts, and the tape need to be between 60° and 110°F for proper adhesion. Vehicle surface must also be wiped with alcohol to remove dirt and grease, which may also affect adhesion. Failure to maintain proper installation temperature and surface preparation may result in the part not functioning correctly.



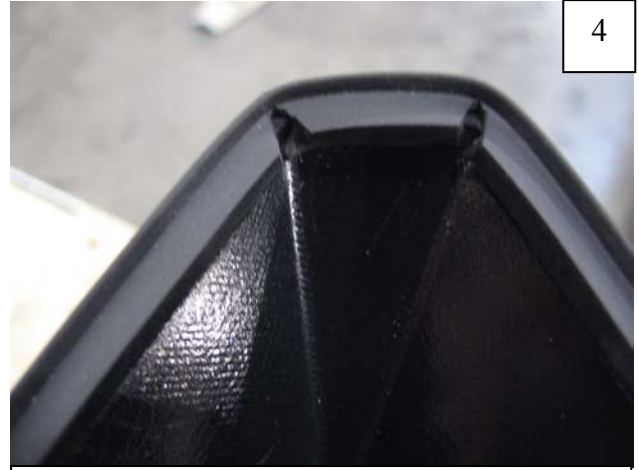
Wipe side of vehicle with alcohol wipe to remove grease and dirt.



Peel two to three inches of red vinyl backing away from edge trim tape.



Applying the adhesive side of the edge trim to the inner side of part, affix edge trim to the top edge of the part (the portion that comes in contact with vehicle).



At sharp corners, use a utility knife to notch a "V" in edge trim, taking care not to cut front face of edge trim (four places each part)



Press edge trim into place along the top edge of the flare in one foot increments, pulling red vinyl backing free as you go.



Slide a supplied washer onto a supplied screw.



Align three indents in each taped inner piece with three holes in parts. Tape attached to inner pieces should be facing away from the inside of the part.



Using supplied Torx bit, start a screw/washer through each pocket into the indent in the inner piece (4-5 turns). Do NOT tighten!



9

Remove red vinyl backing from tape pads.
NOTE: Check part for engraved "14008R" or "14008L" prior to proceeding to the next step. The left part will go on the driver's side.



10

Gently position part on vehicle, centering between fender flares (about 1/4" to 3/8" space on each side). Take care not to press the part onto vehicle until properly positioned.



11

Once part is positioned, press firmly on screw heads to adhere inner pieces to vehicle. Remove screws and remove outer part from vehicle, leaving the inner pieces on the body.



12

Apply 30 pounds of pressure per square inch to the inner pieces to ensure proper tape adhesion.



13

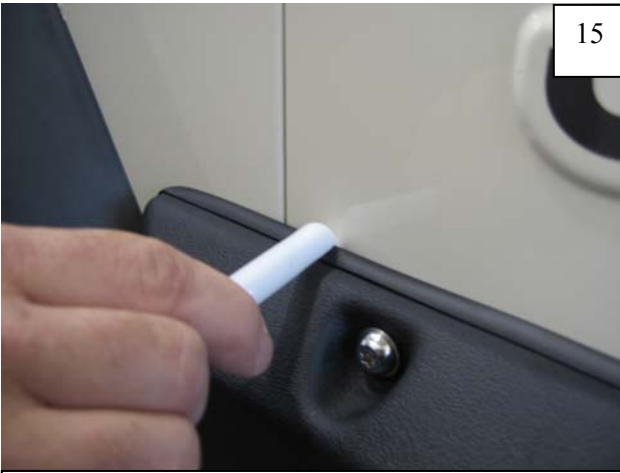
Reinstall part as shown in Step 8, taking care that screws are snug. Do NOT overtighten, as the screws may strip out.



14

Attach underside edge of the Rocker Panel to the vehicle using supplied Tuf-Lok® fasteners, pressing Tuf-Loks through slots and into factory holes.

15



Using supplied Edge Trim Tool, seat top edge of edge trim first by hooking curved end under top edge at one open end and slide over entire top edge to the other end.

16



Using flat end of supplied Edge Trim Tool, seat bottom edge of edge trim first by inserting straight flat end between bottom edge of edge trim and part at one open end and slide over entire top edge to the other end.