



www.hylineoffroad.com

1507 C West Park Avenue ~ Perkasie, PA 18944
 Tel: 1.888.495.4631 ~ Fax: 215.257.4364

Proudly Made In USA

Installation Instructions:

JL Summit Swingout Tire Carrier
 Part Number: 600.200.120

Vehicle Fitment:

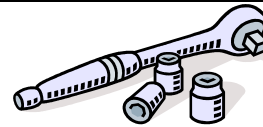
2018 - Present Jeep Wrangler
 & Unlimited

Parts List

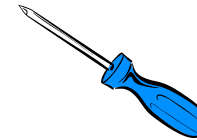
Qty:

- 1 Summit Tire Carrier (600.200.120.V)
- 1 Tailgate Bracket (600.200.120.E)
- 1 Adjustable Tire Bracket (600.200.120.W)
- 1 Tire Mounting Bracket (600.200.120.N)
- 1 Camera Tube Mount (600.200.120.X)
- 1 Camera Mount Bracket (600.200.120.T)
- 1 Camera Shroud/Light Bracket (600.200.120.Y)
- 1 Frame Tie In Bracket (600.200.120.S)
- 1 3" LED Third Brake Light (05044)
- 2 Bronze Bushings (600.200.120.K)
- 1 1/8" Diameter Stainless Slotted Spring Pin
- 4 O-Rings
- 1 Pivot Pin, Zinc Plated (600.200.120.I)
- 1 Pivot Pin with Etched Logo (600.200.120.F)
- 1 Pivot Pin Bottom Washer (400.200.130.U)
- 1 4" Connector Rod (400.200.130.M)
- 1 White Plastic Alignment Block (400.200.130.F)
- 1 Hardware Packet (600.200.120.HARDWARE)
- 1 Black Plastic Tube Plug
- 1 1/4" Ribbed Push Pin for camera shroud
- 2 22-18awg Spade Connector Sets

Tools Needed



Ratchet
 13mm Socket
 5/16" Socket
 3/4" Socket
 .050" Hex Key
 5/32" Hex Key
 5/64" Hex Key
 3/16" Hex Key
 4mm Hex Key
 T9 Torx
 T25 Torx
 T40 Torx



Flat Blade
 Screwdriver



Wire Cutters &
 Crimpers



Steel Hammer &
 Rubber Mallet



Small Amount of
 White Lithium
 Grease

Congratulations on your purchase of the Hyline Offroad JL Summit Series Swingout Tire Carrier. Our products are completely manufactured in our facility located in Perkasie, PA. They are designed and engineered for durability and long product life. We sincerely thank you for your purchase and your support. We look forward to serving you in the future. *Hyline Offroad Staff*

PLEASE READ INSTRUCTIONS BEFORE BEGINNING INSTALLATION

Stock Tire Carrier Removal

Step 1 – Remove camera shroud using T40 torx bit, then remove spare tire.

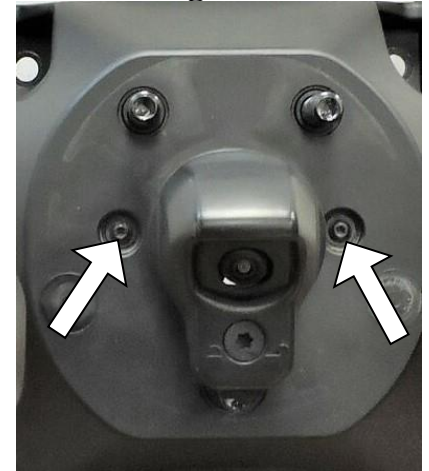
Step 2 – Using a 13mm socket, remove the eight bolts from the stock tire carrier to detach from the tailgate. Use a cart or table to assist in holding the stock tire carrier while doing the next few steps.

Step 3 – Use a T25 torx bit to remove the two screws from the camera mount/wheel stud plate. (See Figure 1) Push the wheel stud plate out along with the plastic camera mount. You may have to gently tap out the plastic camera mount to remove it from the tire carrier.

Step 4 – Once the camera mount is removed use a T9 torx bit to remove the three screws from the camera mount. Disconnect the camera cable by depressing the tab and pulling the connector off. **DO NOT CUT THE CAMERA CABLE!**

Step 5 – Use a T25 torx bit to remove the seven screws on the third brake light housing cover. Expose the wiring and disconnect the wires from the light by depressing the tab and pulling the connector off. Remove wires and camera cable from the housing.

Figure 1

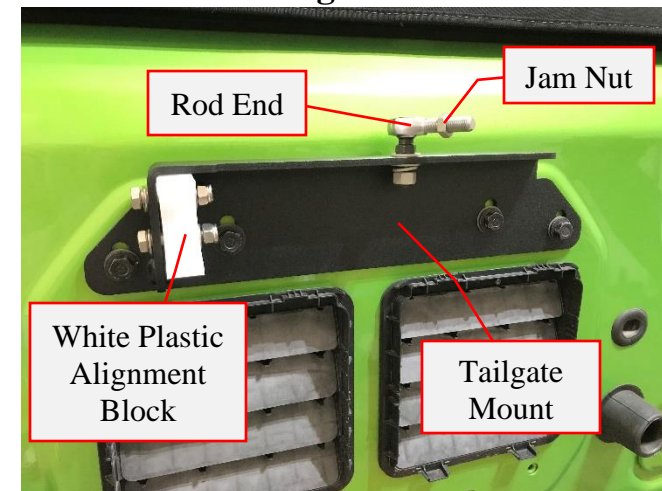


Hyline Tire Carrier Install

Step 6 – Using four of the bolts previously removed in Step 2, install the tailgate mount plate (Leave bolts slightly loose to move plate up and down). You can also reinstall the remaining bolts just so there aren't open holes in the tailgate. (See Figure 2)

Step 7 – Install the white alignment block using two 5/16-18 x 1-1/2" bolts, flat washers and lock washers (Keep Loose). Also install one rod end using the 3/8-24 hex nut, lock washer and flat washer. Install the jamb nut. (Note: One jam nut is left hand thread and one is right hand thread)

Figure 2



Step 8 – Prepare to install the pivot pin by first removing the passenger side tail light housing. This is very easy to do. Use a flat blade screw driver to remove the plastic cover plate inside the Jeep. Then use a T40 torx to remove the plastic spring screw. Once the screw is removed the tail light housing can be safely removed. With the passenger side tail light housing removed it will make it much easier to install the pivot pin and tire carrier. **You can reinstall the tail light after arm is installed.** (See Figure 3)

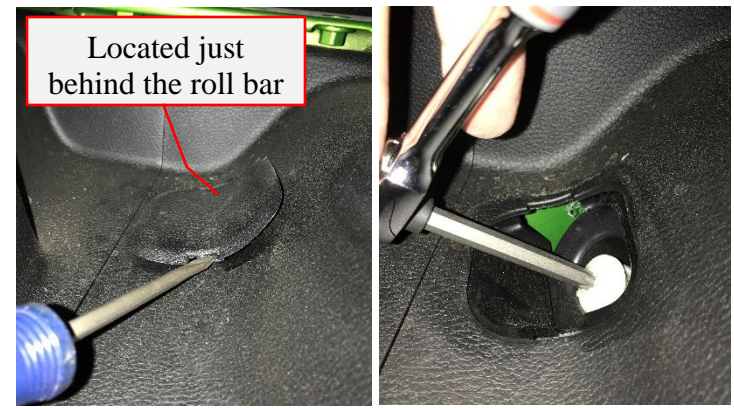


Figure 3

Step 8 – Install two O-Rings into each bronze bushing. One O-Ring will install on the inner cutout and one on the outer cutout. Make sure o-rings are FULLY seated in each cutout. (See Figure 4)



Figure 4

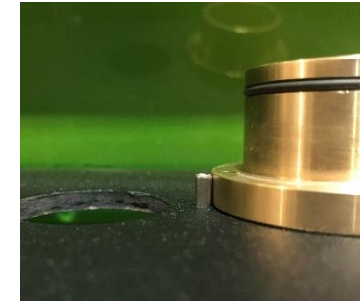


Figure 5

Step 9 – Insert 1/8” Diameter slotted spring pin into small hole next to the larger pivot pin hole on the topside of the bumper. Use a hammer to tap down the pin until it sits just below the height of the bronze bushing collar. (See Figure 5)

Step 10 – Assemble Pivot Pin, Bronze Bushings and Swingout Tire Carrier Arm. See Below images for assembly steps.



Install the pivot pin into the bumper and align into the keyway plate.



Slide bronze bushing over pivot pin and align hole with slotted spring pin.



Grease outside of bronze bushing and inside of arm tube. Install swingout arm.



Grease outside of top bronze bushing and install over pivot pin into the tube.

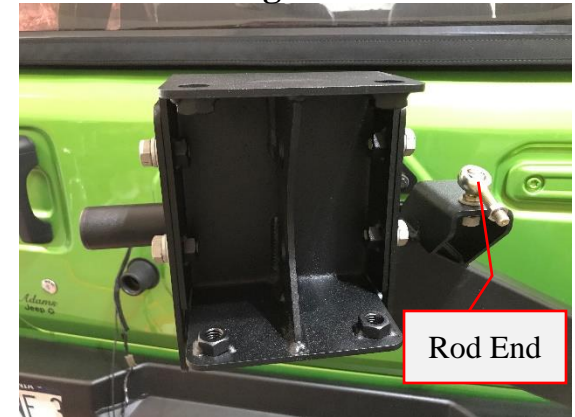


Use 5/16-18 x 1/2” button head screw with tooth lock washer to install cap.



Install bottom washer using 5/16-18 x 1/2” button head screw and tooth lock washer

Figure 6



Step 11 – Install the Adjustable Tire Mount Bracket onto the swingout arm with the four 1/2”-13 x 1” hex bolts, lock washers and flat washers. This bracket is adjustable so that it can accommodate up to a 40” tire and not interfere with the the park assist sensors. If you have park assist sensors it is best to set the bracket at the highest possible point so there is no interference. Once in place tighten the bolts with a 3/4” socket. (See Figure 6)

Step 12 – Install the other rod end onto the swingout arm using the 3/8”-24 hex nut, lock washer and flat washer and tighten. Also install the other jam nut. (See Figure 6)

Step 13 – Assemble the wheel stud plate and camera mount tube to the tire carrier bracket. (See Figure 7) for assembly process. Insert wheel stud plate through the camera mount tube then through the tire carrier bracket. Attach all the part together using the two M6 flat head screws. Tighten using a 4mm hex key. (See Figure 8)

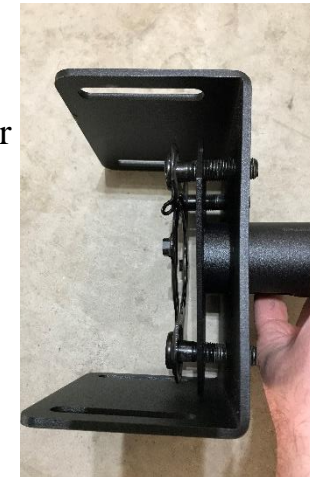


Figure 7



Figure 8

Step 14 – Attach the tire carrier bracket assembly onto the adjustable tire mount bracket using another four 1/2”-13 x 1” hex bolts, lock washers and flat washers. **DO NOT TIGHTEN** these bolts yet. Keep them just loose enough to be able to slide the bracket in and out. (See Figure 9)

Step 15 – Assemble the back up camera to the camera mount bracket with the three supplied 2-56 x 3/16” screws using a .050” hex key. Make sure the camera is placed on the correct side of the bracket as shown in (Figure 10).

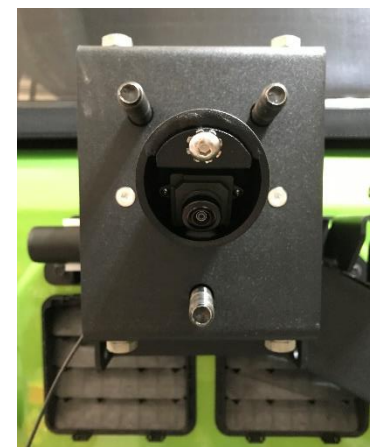


Figure 9



Figure 10

Step 16 – Route camera cable through the backside of the camera tube as shown in (Figure 11). Attach the connector onto the camera, then attach the camera bracket into the tube using the 1/4”-20 x 1/2” button head screw and tooth lock washer. Tighten the screw using a 5/32” hex key. (See Figure 12)



Figure 11



Figure 12

Step 17 – Attach the supplied LED third brake light onto the camera shroud bracket using the two 6-32 x 1/2” flat head screws and nylon locknuts. Make sure wire is fed through the hole in the center of the bracket. Tighten using a 5/64” hex key and 5/16” socket. (Figure 13) shows the camera shroud mounted onto the swingout arm, but DO NOT mount this onto the arm yet. This will be the last step.



Figure 13

Step 18 – Cut the stock third brake light connector off and strip the ends of each wire back about 3/8”. Now crimp on a FEMALE spade connector onto the BLACK wire and a MALE spade connector onto the WHITE/GREEN wire. This will make it easier down the road when the wires are disconnected. You won’t have to remember which connector goes to which wire, since they’ll only attach one way.

Step 19 – Next strip the ends of each wire on the LED third brake light back About 3/8”. Now twist together the bare wire ends of the white and red wires. Crimp a FEMALE spade connector onto the RED/WHITE wires and a MALE spade connector onto the BLACK wire. (See Figure 14)



Figure 14

Wire Connections:

RED/WHITE ----- WHITE/GREEN
BLACK ----- BLACK

Step 20 – **INSTALL YOUR SPARE TIRE ONTO THE SWINGOUT ARM NOW.** The actual weight of the spare will be needed to adjust the brackets properly. Install the lug nuts and tighten.

Step 21 – With the spare tire mounted you can now adjust the tire mount bracket. The four bolts were left loose so you can move the bracket to where the tire is fully in contact with the swingout arm and is straight vertically. When the tire is where you want it go ahead and tighten down the four bolts using a 3/4” socket.

Step 22 – Thread the aluminum connector rod onto the rod ends. Note, the connector rod and rod ends are machined with right and left hand threads. They can only be assembled one way. Must start threading into the connector rod at the same time.

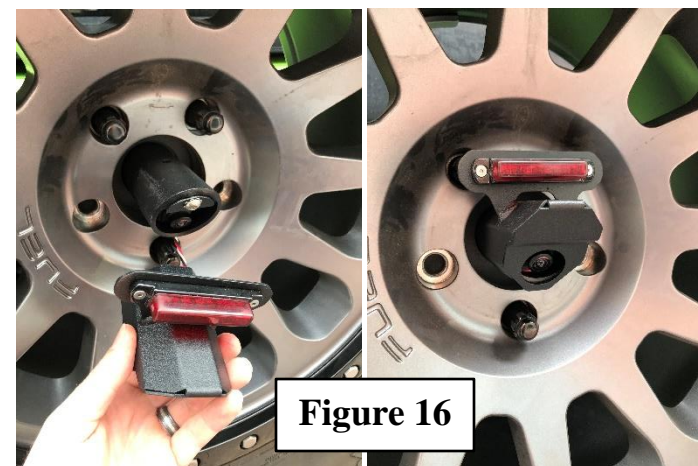
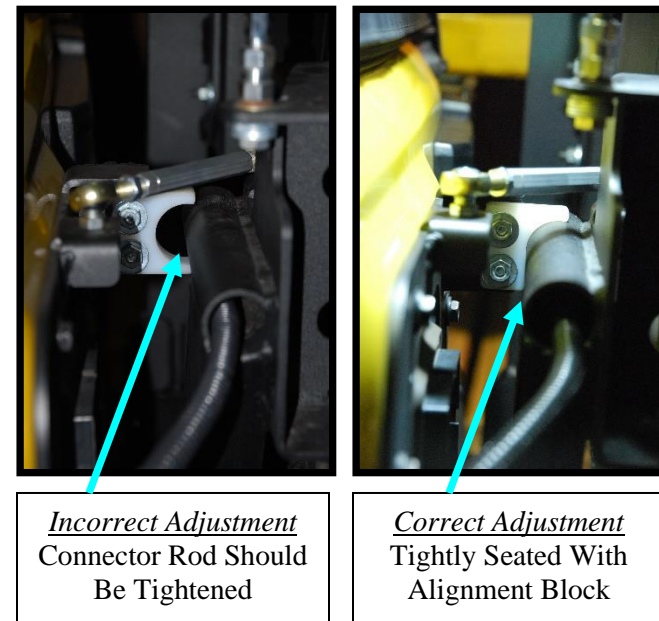
Step 23 – With the tailgate in the closed and latched position, you can turn/tighten the connector rod until the tire carrier arm draws in tight to the plastic alignment block. Adjust so that there is good tension against white block and no rattling or movement with tailgate closed. You can adjust the alignment block and/or the entire tailgate mount plate up or down in order for it to align with the round tube on the Tire Carrier. (See Figure 15 *Note, images are from a JK installation*)

Step 24 – Tighten the bolts in plastic alignment block and the 3/8” jam nuts against the connector rod. This will keep the connector rod from unthreading. You can also tighten the four bolts on the tailgate bracket.

Step 25 – Install the black plastic tube plug into the open end of the tube on the swingout arm. This will give the tube a nice finished look.

Step 26 – Install the camera shroud/third brake light mount. Feed the wire through the slot on the underside of the tube and out the back with camera cable and connect ends. You can tie up all wires and cable as desired. Make sure there are no stress points when the tailgate is fully opened or closed. (See Figure 16)

Figure 15



Step 27 – Insert the ¼” ribbed push pin fastener into the hole to secure the camera shroud/third brake light bracket onto the tube. This can be removed at any time without any tools if/when the tire has to be removed.



! Attention

Installation instructions provided must be read and followed exactly when installing product. Failure to do so could potentially result in injury or death of any occupants in the vehicle. **WEAR SEAT BELTS AT ALL TIMES WHEN DRIVING!**

Though our products are rugged, they are primarily designed and built to enhance the appearance of the vehicle and will not protect from death or injury in the event of an accident. Adhere to all vehicle manufacturers specifications.

Don't forget to follow HYLINE OFFROAD on social media and post pictures of your Jeep!



**** IMPORTANT: PLEASE READ BEFORE INSTALLING**

HYLINE OFFROAD, LLC WARRANTY

HYLINE OFFROAD, LLC. LIMITED WARRANTY Hyline Offroad, LLC, warrants all products against manufacturer's defects in workmanship and material for a period of one (1) year from the date of sale. This warranty applies to manufacturer's defects only and does not cover damage or failure caused by natural causes or third parties.

If product failure does occur within the time period specified according to the provisions of this Warranty, then Hyline Offroad, LLC agrees to provide the replacement product free of charge, F.O.B. factory. This Warranty is valid only so long as the product is installed on the original vehicle. Removal of the product from this vehicle automatically invalidates this Warranty.

As described above, this warranty is expressly limited to the material cost of the product and does not extend to labor costs. Hyline Offroad, LLC will not be responsible for any costs incurred in the removal or reinstallation of the product furnished by manufacturer under this warranty.

CLAIMS PROCEDURE Submit Warranty claim in writing, by certified mail to Hyline Offroad, LLC, 1507 C West Park Avenue, Perkasio, PA 18944. The Claim Notice must state the date of this Notice, the nature of the defect, date of purchase and if already installed, the date of installation, if installed the name of installer and include Proof of Purchase.

This Warranty shall be for the benefit of the original owner only, and is non-transferable. This Warranty is valid in those states where permitted. Some states do not allow limitations on the length of an implied warranty, so the above limitation may not apply to you. Some states do not allow the exclusion or limitation of incidental or consequential damages, so the above limitation or exclusion may not apply to you. You should check your local state laws to determine this. This Warranty gives you specific legal rights, and you may also have other rights, which vary from state to state.

THE WARRANTIES SET FORTH IN THE FOREGOING PROVISIONS ARE LIMITED TO THEIR PRECISE TERMS AND PROVIDE EXCLUSIVE REMEDIES EXPRESSLY IN LIEU OF ALL OTHER WARRANTIES. THERE ARE NO WARRANTIES, EXPRESS OR IMPLIED, WHICH EXTEND BEYOND THE DESCRIPTION IN THE FOREGOING PROVISIONS. HYLINE OFFROAD, LLC EXPRESSLY DISCLAIMS ANY IMPLIED WARRANTY OF MERCHANTABILITY WITH REGARD TO THE PRODUCTS. HYLINE OFFROAD, LLC IS NOT LIABLE TO ANYONE FOR INCIDENTAL OR CONSEQUENTIAL DAMAGES FOR BREACH OF ANY WARRANTY, EXPRESS OR IMPLIED. HYLINE OFFROAD, LLC IS NOT LIABLE FOR DAMAGES TO PERSON OR PROPERTY, CONSEQUENTIAL LOSSES, LOSS OF PROFIT, LOSSES OF PRODUCT IN STORE, OR THE LIKE, UNDER ANY CIRCUMSTANCES AND HYLINE OFFROAD, LLC'S LIABILITY IN ANY CIRCUMSTANCE IS SPECIFICALLY LIMITED BY THE TERMS OF THIS WARRANTY.

HYLINE OFFROAD, LLC HOLD HARMLESS AGREEMENT

1. In purchasing a Hyline Offroad, LLC Product™ I release, waive, discharge and covenant not to sue Hyline Offroad, LLC's officers, servants, agents, or employees (hereinafter referred to as Releasees) from any and all liability, claims, demands, actions and causes of action whatsoever arising out of or related to any loss, damage, or injury, including death, that may be sustained by me (or anyone else), any property belonging to me (or anyone else), whether caused by the negligence of the releasees or otherwise, while working on, using or any activity related to this product.
2. I am fully cognizant of any risks and/or hazards connected with the use of a this product and I elect to willingly engage in such use of this product knowing that the use may be hazardous to me and my property. I willingly assume full responsibility for any risks of loss, property damage or personal injury, including death, that may be sustained by me (or anyone else), or any loss or damage to property owned by me (or anyone else), as a result of using this product, whether caused by the negligence of releasees or otherwise.
3. I further agree to indemnify and hold harmless the releases from any loss, liability, damage or costs, including court cost and attorney fees, that they may incur due to my use of a this product, whether caused by negligence of releasees or otherwise.
4. It is my express intent that this Release and Hold Harmless Agreement shall bind the members of my family and spouse, if I am alive, and my heir's assigns and personal representative, if I am deceased, and shall be deemed as a release, waiver, discharge, and covenant not to sue the above named releasees. I further agree that this Waiver of Liability and Hold Harmless Agreement shall be construed in accordance with the laws of the State of Pennsylvania.

By accepting and installing this product, I acknowledge and represent that I have read the above Warranty and Hold Harmless Agreement, understand it and accept it willingly as my own free act and deed; no oral presentations, statements, or inducements, apart from the foregoing written agreement, have been made; I am at least eighteen (18) years of age and fully competent; and I execute this Release for full, adequate and complete consideration fully intending to be bound by same.

If you do not agree with the preceding Hold Harmless Agreement, you may return the product and receive a full refund. Please, contact a Hyline Offroad sales representative and they will issue a call tag for the product in question. Once the product has been received by Hyline Offroad, inspected and accepted for return, a full refund will be issued.