

Omix-Ada, Inc. - Installation Instructions

1997- 2004 Jeep Wrangler TJ

3" Body Lift Kit

Step 1: Remove the fuel filler neck



Remove all 4 screws from fuel filler neck to get access to the fuel hose (see step 12 "fuel hose extension")

- T-25 Torx
- screws will be reused

Step 2: Remove bolts from 4-wheel drive bracket



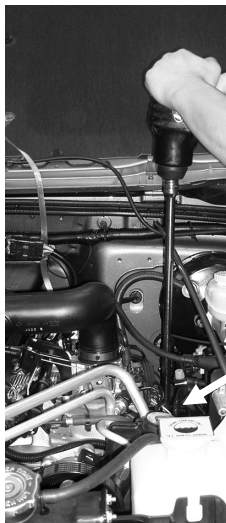
Remove carpet on drivers side to get access to the 4-wheel drive bracket bolts

- 10mm socket
- Bolts will be re-used

Remove bolts using 10 mm socket

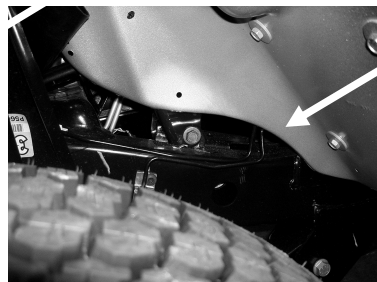
4-wheel drive bracket extension will be installed in step 13

Step 3: Remove steering shaft mount bolts



Loosen 13 mm or ½ bolt on top of steering shaft
← Disassemble steering shaft mount from frame
(Move rubber engine guard aside to get access to 15 mm bolt that mounts in the side.)
Remove this bolt and save it for re-installation of the new bracket.

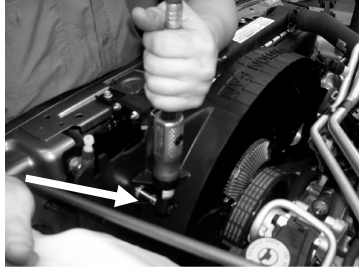
- 13 mm socket
- 15 mm socket



Body Lift

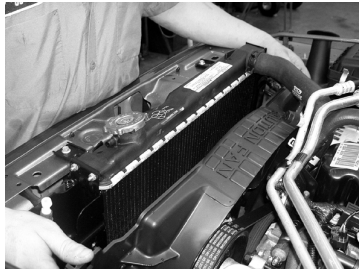
Step 4: Loosen Radiator

Remove coolant overflow bottle to get access to radiator and fan shroud bolts – set aside.



Remove all 4 bolts from fan shroud and keep them for Re-installation.

- 11 mm socket
- Bolts will be re-used



Push back radiator fan shroud



Remove all bolts of radiator (3 on each side), starting with the ones on the drivers side. Repeat on passenger side. Keep at least 4 of the 6 bolts

- 10 mm socket



Radiator is now loose

Step 5: Remove light bezels



Light bezels must be removed to install new bump stops with the 3" body lift - T-15 screw driver

Remove all three screws per headlight

Remove light bezels

Keep all six screws

Note: If vehicle is getting light guards, turn in headlight adjustment screws six full turns. See Chapter Accessories/ Light guards for more information

Step 6: Lift vehicle

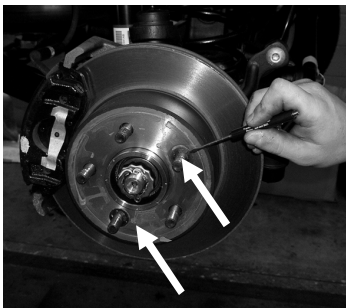


Put Jeep on rack, lift it

Step 7: Remove wheels and tires



Remove all wheels and tires to make body lift installation easier - 19 mm or 3/4socket



TIP: If you install aftermarket wheels, you must remove rotor retainers (2 on each wheel) to allow aftermarket wheel to sit flat on rotor. - Wire snips

Step 8: Remove body bolts



Picture shows positions of the body pucks.
Body pucks 9/10/11 are opposite of 4/3/2.

Please remove the body pucks in the following order:

Remove factory body puck (1) from under the grille - 16 mm socket

None of the factory bolts will be re-used



Remove factory body pucks 2 / 3 / 4 along **one side of the vehicle.** - 16 mm socket

Keep or throw away **all** factory bolts



Remove factory body pucks 5 / 8, on each side in front of gas tank - 16 mm socket

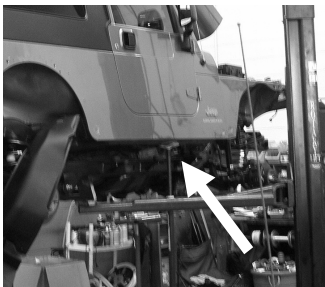
None of the factory bolts will be re-used



Remove factory body pucks 6 / 7, one on each side on rear of vehicle - 16 mm socket

Leave body pucks 9/10/11 on opposite side of Jeep loose but not off!

Step 9: Lift body off the frame on one side

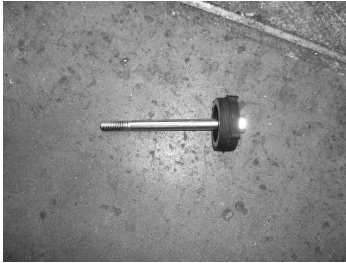


Now, all bolts should be loose on one side. - Screw Jack
Use Screw Jack to push body up on one side (high enough to put body block on top of factory puck in, you might have to adjust the height a few times)



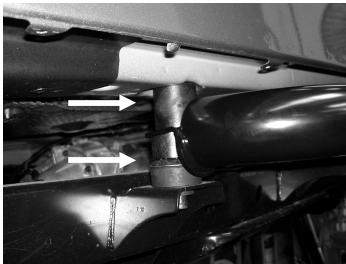
Rear view of raised up body

Step 10: Install body pucks



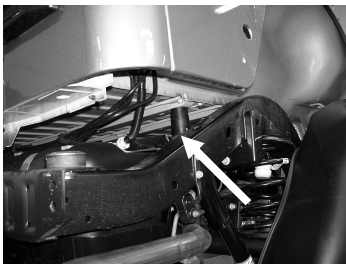
Use body bolts from body lift kit.
Start the bolts, but do not tighten them.

IMPORTANT: Use Locktite for the bolts.



If you install side steps, start with body puck No 4! - hands

Put 1" body puck under rear side step, 2" body puck on top of mounting hole



If you do not install side steps, start with body puck No 5!

Put one body puck in front of gas tank (lifted side)

Please install the rest of the body pucks on top of the factory body pucks in the **following order**:

1. Step:

- No 4 → tighten
- No 5 → start it, do not tighten
- No 3 → tighten
- No 2 → tighten
- No 9 → tighten
- No 8 → start it, do not tighten
- No 10 → tighten
- No 11 → tighten

2. Step:

- No 5 → tighten
- No 8 → tighten
- No 6 → tighten
- No 7 → tighten

No 1 will be tightened in the very last step. Leave it until then.

Step 11: Install fuel extension pipe

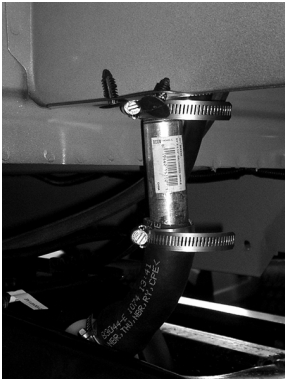


Fuel extension pipe



Cut fuel filler hose 1 ½" below factory clamp.

- razorblade



Insert fuel extension pipe in the hose.
Tighten hose and extension down with hose clamps from
the body lift kit.

- 8 mm socket

Step 12: Four wheel drive linkage extension



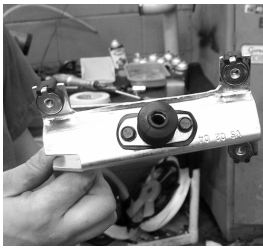
The Four-wheel-drive linkage has to be extended due to the body lift impact on the part.

- 3/8 electric impact

- 10 mm socket

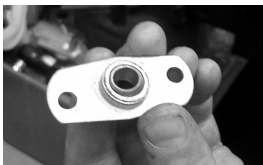
You've already loosened the bolts holding the linkage in step 2

Remove linkage from its original position (below drivers seat)

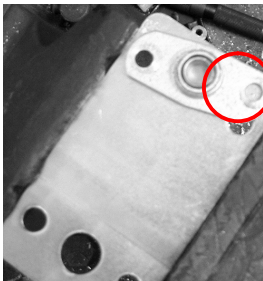


Remove the bolts of the bracket

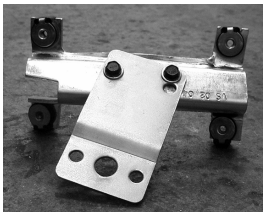
Save the bolts



pivot bracket from the 4-wheel-drive linkage

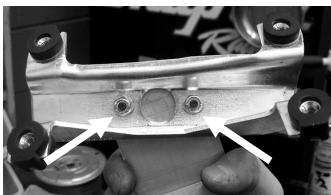


Attach pivot bracket onto relocation bracket
For correct fitment.



Attach drop bracket to 4wd-linkage, using the factory bolts and washers that are included in the body lift kit.

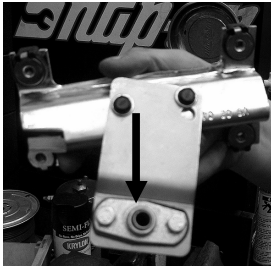
- 10 mm socket



Tighten down factory bolts with lock nuts from body lift kit

- 11 mm socket

Body Lift



Install pivot bracket on drop bracket as shown. - 11 mm socket

Use 11 mm screws / 4 washers (one on each side of bolt) / 2 lock nuts from body lift kit

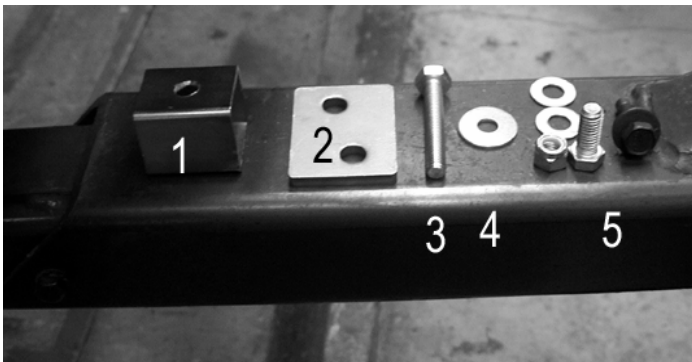
Do not over-tighten pivot bracket, make sure it still rotates



Put 4wd-linkage back in place using factory bolts.

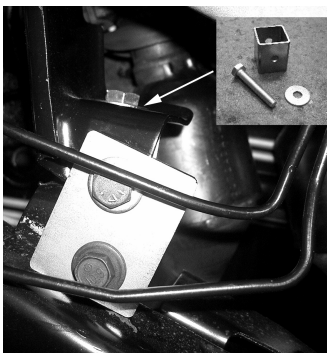
Step 13: Steering bracket lift

To install the steering bracket kit, you need to move rubber engine cover aside



- 1. steering raise cube, goes on top of frame / under steering shaft
- 2. steering raise plate, goes aside of cube
- 3 & 4 bolt and washer, use with 1 (cube)
- 5. 2 washers, lock nut, 1 bolt 1 factory bolt, use with 2 (plate)

USE LOCKTITE!



You've removed the bolts in step 3. Combine items as described above. Place the cube on top first, tighten, (see detailed picture), then tighten the plate aside. Tighten 13mm bolt on top of steering shaft.

- 13mm socket

- 1/2" or 15 mm socket

- 16 mm socket

TIP: After installation, paint the steering bracket kit black with semi – gloss spray paint and replace rubber engine guard.

Step 14: Replace bolts

Lower vehicle down.

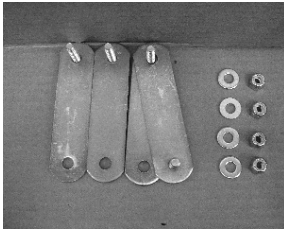
- T-25 socket extension

Put factory bolts back in fuel filler neck, tighten down. (see step 1)

Replace 4-wheel drive bracket bolts and carpet under drivers set that you removed in step 2.

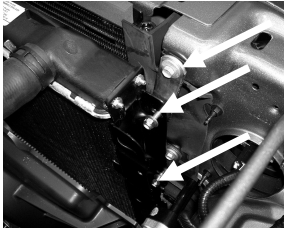
- 10mm socket

Step 15: Radiator lowering extensions



Radiator lowering brackets from Body Lift Kit
- 4 lowering brackets with bolts
- 4 lock nuts
- 4 washers

OMIX-ADA lowering brackets are slightly modified.



Replace bolts and lowering brackets in original positions of the radiator, using 4 radiator mounting points instead of the original 6.
Start all bolts on the radiator, tighten bolts to grille

- 10 mm socket

! C A U T I O N ! For all Jeeps that have A/C, it is extremely important to allow the A/C lines (condenser line) enough space. On some models it might be necessary to cut out a small amount of metal out of the lower part of the radiator. On most newer Jeeps it is enough to simply angle the radiator slightly to allow enough room.

Now, tighten radiator to the grille.

- 11 mm socket

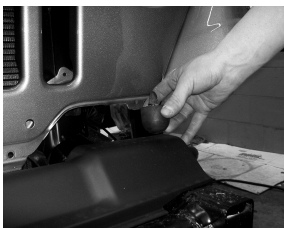
Tighten fan shroud back to radiator, re-using the original bolts.

Re-install coolant overflow bottle

Step 16: Install bump-stops



Bump stop extensions from body lift kit



Remove factory bump stops below head lights, underneath the grille

Hands!

Body Lift



Replace factory bump stops with bumps stops from Body lift kit with the rounded side pointing downwards.

Tighten bolts (you might need to lift the vehicle to get access to the bolts).

Repeat on other side of the vehicle.

- swivel 13mm socket

As the very last step, tighten the extended body puck No 1, underneath the grille.