

610-Front End Guard

and optional 670-Brush Guard

Olympic 4x4 Products are serviced by our factory. We provide answers to installation questions. We ship parts ASAP. Try us before the hassle of returning Olympic 4x4 Products to your retailer or mail order specialist.

For assistance please call (800)777-0878.

Note: Will not work with factory bumperettes. Factory fog lights will need to be relocated. Factory tow hooks can be reused.



610-Front End Guard with optional 670-Brush Guard mounted on 553-Rock Receiver bumper (sold separately)

Hardware list

<u>Qty</u>	<u>Description</u>
4	1/2" X 1 1/2" hex head bolt
6	1/2" Flat washers
8	1/2" Lock washers

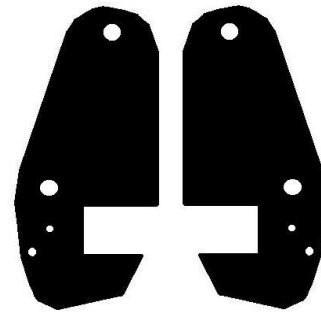
Parts list

<u>Qty</u>	<u>Description</u>	<u>CJ&YJ</u>	<u>TJ</u>
(A). 2	Tube	2 1/2"X29 1/16"	2 1/2"X 24 3/8"
(B). 2	Side plates with 1/2" holes		
	For all Jeeps		

Contents Photos



2 Centertubes (A)
2.5"X 29 1/16" for CJ/YJ (610-11X & 10X)
2.5"X 24 3/8" for TJ (610-12X)



2 Side plates (B)

Tools needed

3/8" or 1/2" drive ratchet wrenches

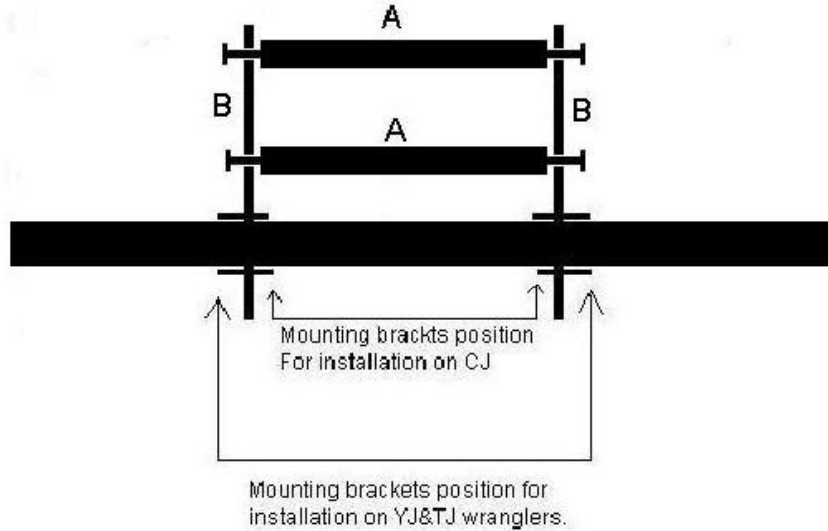
Socket wrench sizes: 3/4", 1/2" (optional depending on application)

Open end/ combination wrench sizes: 3/4", 1/2" (optional depending on application)

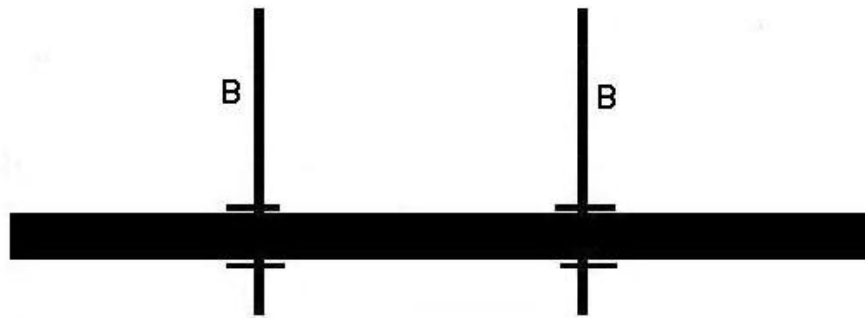
#55 Torx bit

Note:

1/2" bolts use 3/4" wrench

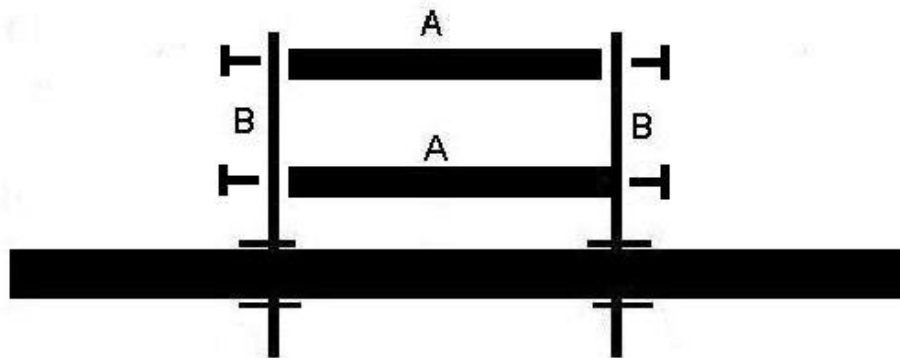


- Step 1. Unbolt bumper from vehicle frame using the #55Torx bit, save original bumper mounting hardware, it will be reused. Some vehicles might have different hardware securing the front bumper.



- Step 2. On 1997-present Wranglers, slip the side plates (B) over the bumper with the mounting brackets that are welded to the side plate pointing towards the outside of the vehicle. On all other wranglers and CJ's install the side plates over the bumper with the mounting brackets that are welded to the side plate pointing towards each other. **Loosely** re-install the OEM bumper mounting bolts.

Note: On 1997-present Wranglers, the front-end guard has been engineered to work with the factory front tow hooks. There are two extra 1/2" flat washers, which will be used as spacers in the rear-mounting hole of the tow hook. Place a flat washer under the rear hole of the tow hook before installing the OEM bumper/tow hook mounting bolt.



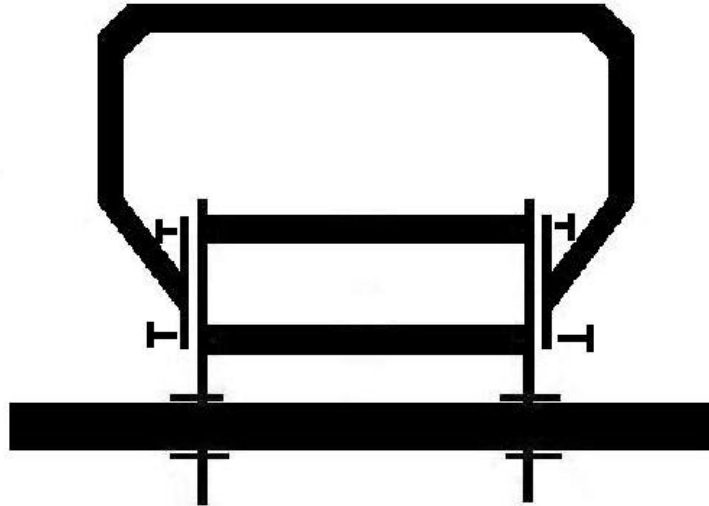
Step 3. Position tube (A) between side plates (B) and fasten with 1/2"X1 1/2" hex head bolts, flat washer, and lock washer. Do this two times since there are two tubes (A). Leave bolts loose till later.

Note: If installing the optional 670-Brush Guard, skip step 4 and continue to step 5.

Step 4. Securely tighten the 1/2" hex head bolts, then tighten OEM bumper mounting bolts. After 500 miles or first off-road trip, whichever comes first, re-check tightness on ALL nuts and bolts.

Note: On some models you will have a gap between the bottom mounting bracket and the bottom of the frame rail. If this is the case, use 1/2" flat washers as spacers. Some gap is normal and the mounting brackets will conform to the frame.

Step 5. Remove the 1/2" hex head bolts, flat washers, and lock washers that are holding the center tubes in place on one side of the front end guard.



Step 6. Position the 670-Brush Guard over the outside of the front end guard side plates and line up the holes in the brush guard with the holes in the side plates and secure half of the brush guard in place by loosely installing the 1/2" hex head bolts you removed.

Note: By leaving the 1/2" hex head bolts loosely in place, you should have enough movement in the brush guard to position the mounting holes with the holes in the side plates.

Step 7. Repeat step 6 for the opposite side of the vehicle, then securely tighten all of the 1/2" hex head bolts, then tighten OEM bumper mounting bolts. After 500 miles or first off-road trip, whichever comes first, re-check tightness on ALL nuts and bolts.

Note: On some early model CJ5's the bumper is bolted to the frame with 5/16" hex head bolts, we recommend that you upgrade to 7/16" nuts, bolts, flat washers and lock washers. Readily available at most hardware stores.

Note: You can install the Olympic Front End Guard with Olympic's heavy duty rock Bumpers. To install the front end guard you will need to drill mounting holes in the rock bumper. For both CJ's and Wranglers order part number 610-11X front end guard.