



Equipped with *AEM DRYFLOW* Filter
No oil required!

Kit Part Number: 21-8312

2007 Jeep Wrangler 3.8L V6

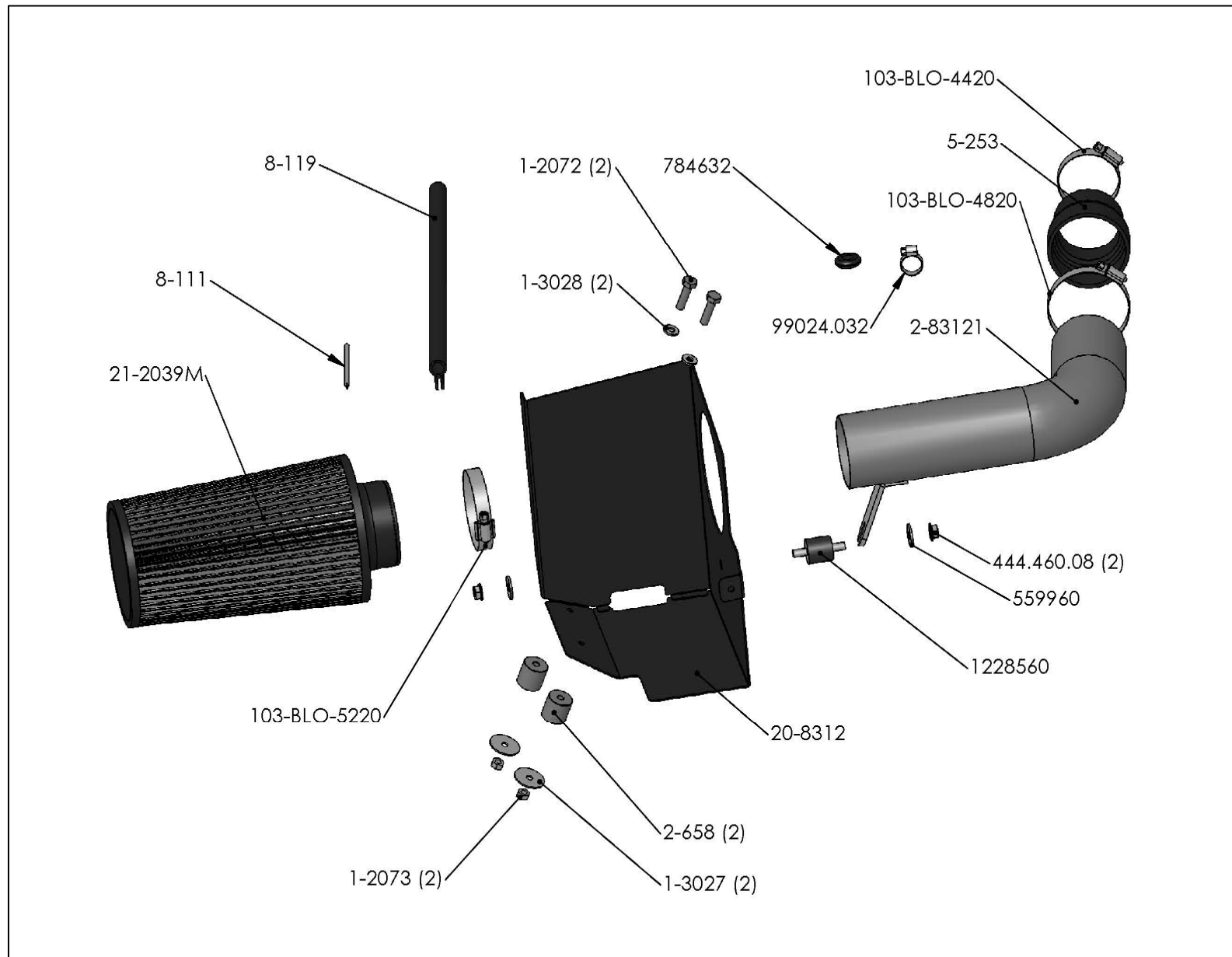
CARB EO # Pending

Brute Force Intake Systems that are pending an Executive Order number (EO#) relating to exemptions under Section 27156 of the Vehicle Code from the California Air Resource Board (CARB) are for off-road use only in California, which may never be used on public highways.

© 2006, Advanced Engine Management, Inc. AEM is a registered trademark of Advanced Engine Management, Inc. All rights reserved.



Advanced Engine Management Inc.
2205 126th Street, Unit A
Hawthorne, CA 90280
Phone: 310.484.2322
<http://www.aempower.com>



Bill of Materials

QTY	PART DESCRIPTION	PART #	QTY	PART DESCRIPTION	PART #
1	Intake Pipe	2-83121	2	Washer ,8mm	559960
1	Heat Shield	20-8312	18	Rubber Edge Trim	8-111
1	Instructions	10-8312	16	Sponge Rubber Gasket	8-119
2	Spacers	2-658	2	AEM Vinyl Decal	10-922Y
2	Washer, 1/4 X 1-1/4 Fender	1-3027	1	Hose, Adapter 2.50/3.0" X3"	5-253
2	Washer, 1/4 SAE Flat	1-3028	1	#48 Hose Clamp	103-BLO-4820
2	Bolt, Hex 1/4-20 X 1 3/4	1-2072	1	#52 Hose Clamp	103-BLO-5220
2	Nut, 1/4-20	1-2073	1	#44 Hose Clamp	103-BLO-4420
1	Grommet, 7/16"	784632	1	3.00"X9.00" Air Filter	21-2039D
1	Hose Clamp, 1"	99024.032	2	8mm Serrated Nut	444.460.08
1	8mm Rubber Mount	1228560			

1. Preparing Vehicle

- a) Make sure vehicle is parked on a level surface.
- b) Set parking brake.
- c) If engine has run in the past two hours let it cool down

2. Removal of Stock System

Recommended Tools:

5/16" Socket
10 mm Socket
5/16" Nut Driver
Extension
Ratchet
10mm Wrench

Installation Time: 2 hours



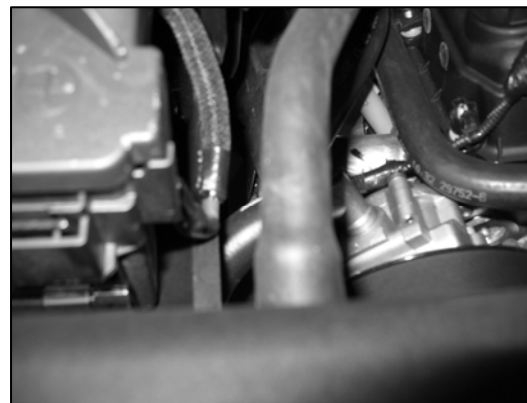
a) This is the stock intake of the Jeep Wrangler.



b) Loosen the hose clamp located at the throttle body.



c) Release the wiring harness from the IAT sensor located on the intake tube.



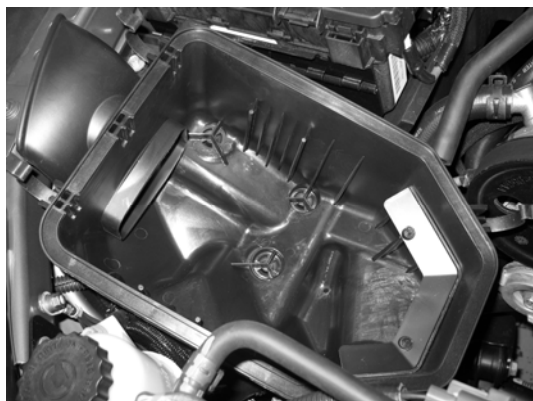
d) Pull off the stock breather hose from the air box lid.



e) Unclasp the two clips securing the air box lid.



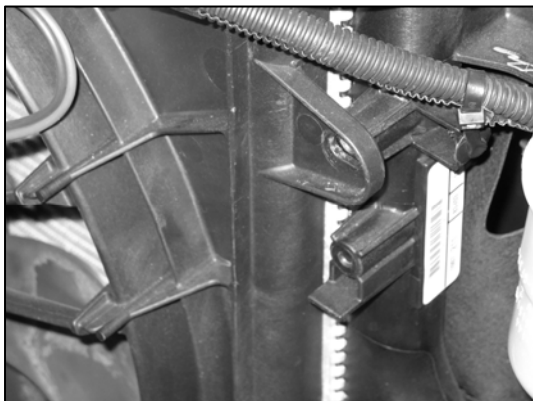
f) Slide the intake tube off of the throttle body and take off the complete assembly. This is the intake tube and air filter lid after removal from vehicle. Be sure to remove the IAT sensor from the intake tube and keep it in a safe place.



g) Remove the stock air filter. Then pull the lower part of the air box straight up out of the vehicle.



h) Remove the three stock grommets.



i) Remove the self tapping screw securing the fan shroud. Keep this screw for later use.



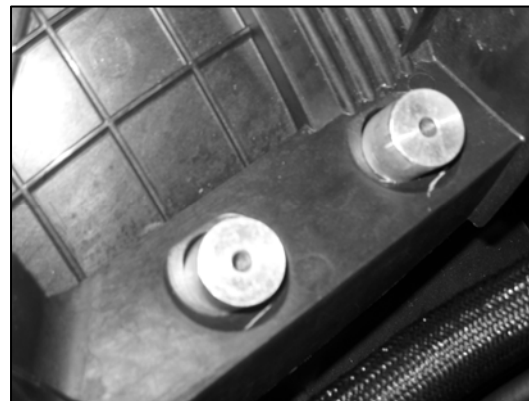
j) Engine bay after the stock intake has been removed..

3. Installation of Brute Force Intake

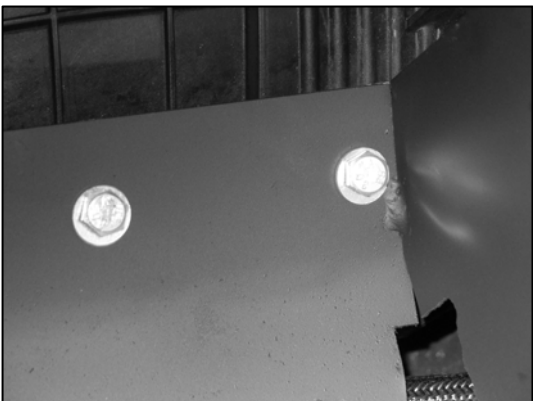
a) When installing the intake system, DO NOT completely tighten the hose clamps or mounting tab hardware until instructed to do so.



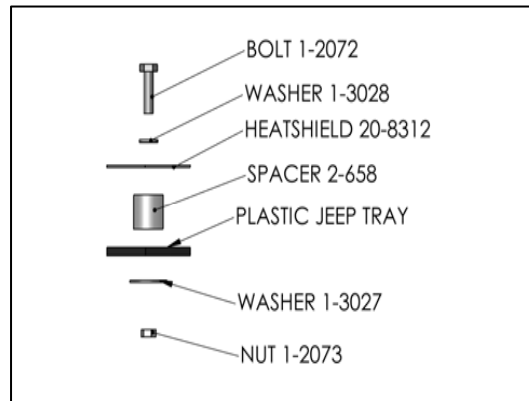
b) Prepare the supplied bolts with the small washers.



c) Place the two supplied spacers in the same location you removed the stock grommets from.



d) Insert the prepared bolts and washers through the heatshield and then guide the bolts through the spacers in the vehicle.



e) Use the larger supplied washers and supplied nuts to secure the heatshield. Refer to diagram to view the assembly.



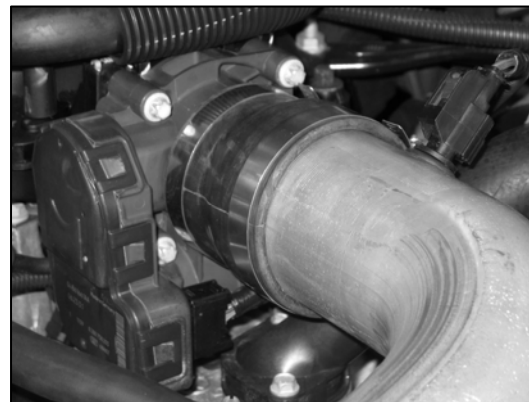
f) Secure the tab on the heatshield using the stock screw removed in step 2(j)



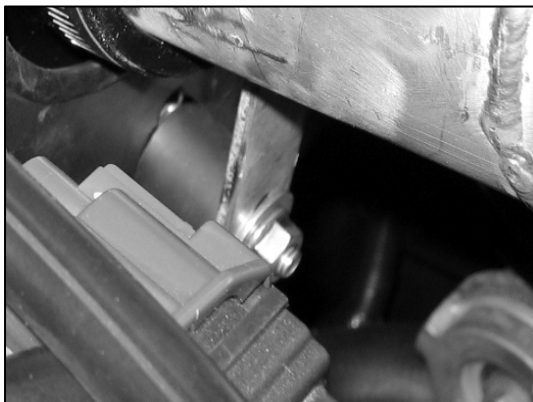
g) Secure the rubber mount to heatshield using the supplied washer and nut. Put the rubber gasket on the edge of the heathshield, and use the rubber edge trim on the pipe opening.



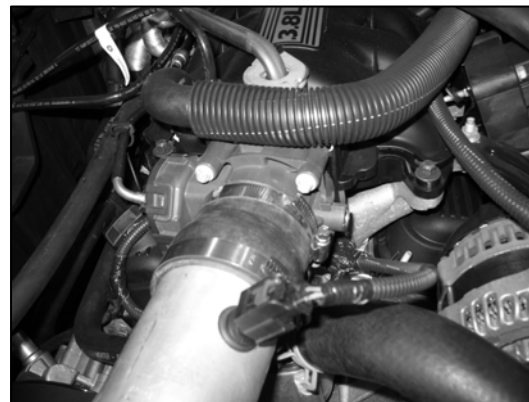
h) Put the reducing coupler on the throttle body.



i) Slide the pipe into the coupler and put the hose clamps loosely around the coupler ends. (#44 hose clamp on the throttle body and the #48 hose clamp on the pipe).



j) Align the bracket to the rubber mount installed on the heatshield then loosely secure the bracket to the rubber mount.



k) Install grommet in pipe and then insert the IAT sensor removed from the stock intake tube into the grommet in the pipe. Then, re-connect the wiring harness to the IAT sensor.



l) Attach the stock breather hose to the nipple on the intake pipe and secure with the supplied hose clamp.



m) Finally, install the Dryflow Filter on the intake tube and secure it with the supplied #52 hose Clamp.



Before

After

Note: Be sure to remove the plastic covering on the AEM Brute Force Emblem

4. Re-assemble Vehicle

- a) Position the inlet pipes for best fitment. Be sure that the pipes or any other components do not contact any part of the vehicle. Tighten the rubber mount, all bolts and hose clamps.
- b) Check for proper hood clearance. Re-adjust pipes if necessary and retighten them. Tighten radiator cap.
- c) Inspect the engine bay for any loose tools and check that all fasteners that were moved or removed are properly tight.
- d) Start engine. Let car idle for 3 minutes. Perform a final inspection before driving the vehicle.

5. Service and Maintenance

- a) It is recommended that you service your AEM Dryflow filter every 20,000 miles for optimum performance. Use AEM Dryflow cleaning kit part # 21-110.
- b) Use aluminum polish to clean your polished AEM Brute Force intake pipe.
- c) Use window cleaner to clean your powder coated AEM Brute Force intake pipe. **(NOTE: DO NOT USE Aluminum polish on a powder coated AEM BRUTE FORCE intake pipe)**

For technical inquiries
e-mail us at
tech@aempower.com
or
call us at
310.484.2322 Option #3

12 MONTH LIMITED WARRANTY

AEM warrants that its intake systems will last for the life of your vehicle. AEM will not honor this warranty due to mechanical damage (i.e. improper installation or fitment), damage from misuse, accidents or flying debris. AEM will not warrant its powder coating if the finish has been cleaned with a hydrocarbon-based solvent. The powder coating should only be cleaned with a mild soap and water solution. Proof of purchase of both the vehicle and AEM intake system is required for redemption of a warranty claim.