

BODY ARMOR

BY TOLAR MFG. CO., INC.

JK INSTALLATION INSTRUCTIONS - ROCKCRAWLER SIDE GUARDS

2007 JEEP WRANGLER JK - 4-DOOR UNLIMITED



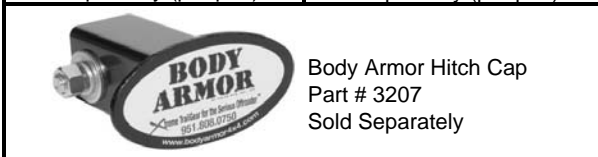
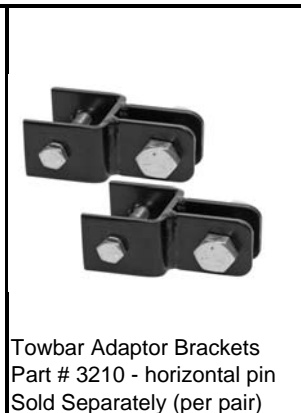
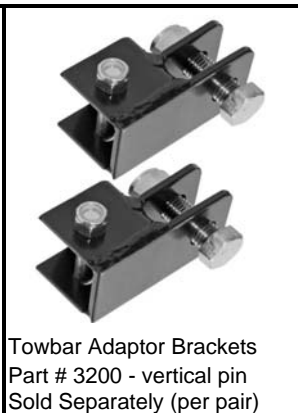
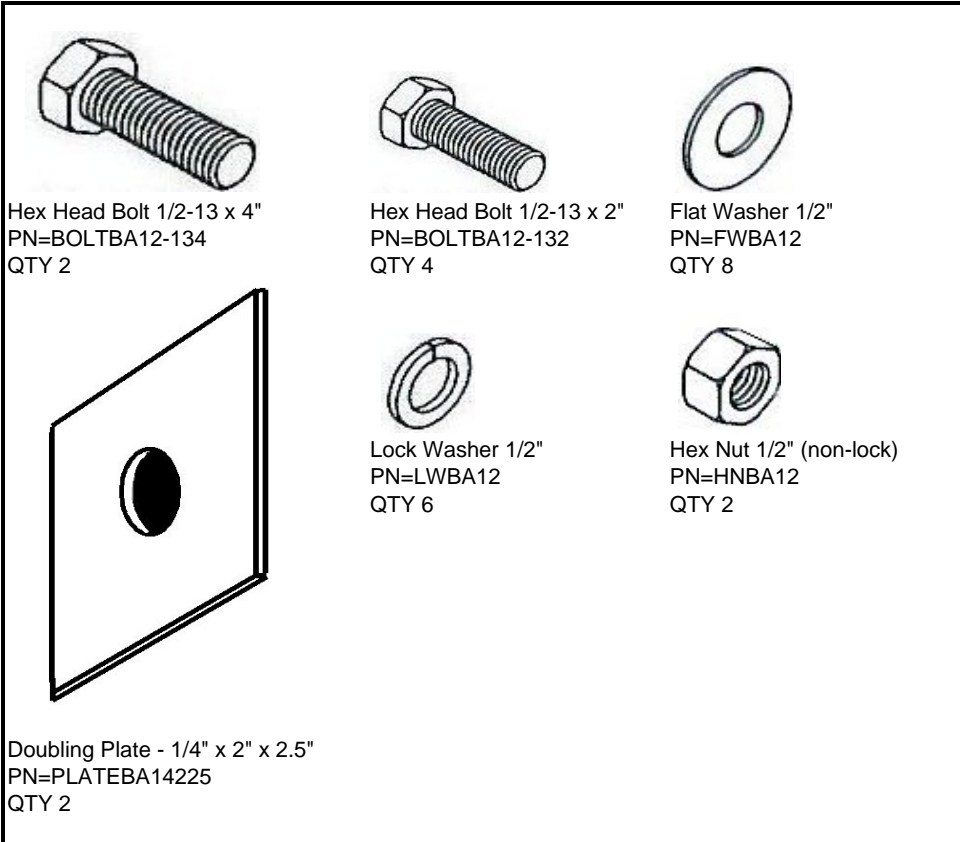
Hardware Kit for Rockcrawler Side Guards - JK Unlimited 4-Door

DO NOT INSTALL THIS PRODUCT ON ANY VEHICLE OTHER THAN JEEP JK UNLIMITED MODELS.

Body Armor designed this product to give you years of dependability and performance. If you encounter any problems during installation of this product, or at any later date, please contact your authorized Body Armor dealer, or call 951-808-0750 for our customer service department, or check our website for tech bulletins regarding your year and model vehicle. Our hours are Monday thru Thursday 7AM-4:30PM and Friday 8AM-12PM, Pacific Time.

Important: Before beginning installation, assure that all parts and hardware listed are contained in this package. Please contact us immediately should you find any shortages in parts and / or hardware.

Check out our line-up of front and rear bumpers for your JK - Available Now!!!



* = Includes Unlimited

Side Guard Installation - Jeep JK Unlimited

Step 1

Unpack side guards using staple puller to remove staples. Save all packing materials and take care not to tear cartons. Remove all hardware and parts. Check parts / hardware list and confirm all parts and necessary hardware are included before installation. It's a good idea to spray all OE attaching hardware with penetrating oil before beginning removal of OE bolts. This will ease removal as well as help assure that none of the bolts' / nuts' threads are damaged during removal.

Step 2

- a. Remove the OE bolt in the forward-most crossmember on the driver's side, located just behind the lower control-arm mounting brackets (see Photo 1 on next page for location reference).
- b. Remove the OE bolt in the center crossmember on the driver's side (see Photo 2 on next page for reference).
- c. With the aid of a helper, hold up the side guard (as in diagram below) and install (2) 1/2" x 2" bolts with (1) flat washer and (1) lock washer on each into the OE crossmember mounting holes. Hand tighten only at this time.
- d. Install a 1/2" x 4" bolt through the rear mount into the existing hole through the frame-rail, with (1) flat washer on the outside, and place (1) doubling plate with (1) flat washer and (1) lock washer on the inside of the frame-rail (see Photo 3 for reference).
- e. Confirm that side guard is even with your JK's rocker panel, and extends beyond the rocker evenly front to rear. Assured it is straight, torque bolts evenly to 75 ft.lbs.

Step 3

- a. Using a floor jack, support the weight of the fuel tank mounting crossmember.
- b. Repeat steps "a" through "e" above on passenger side, though in reverse (as in diagram below).
- c. See Photos 4 through 6 on the next page for reference.

Note: The 1/2" x 4" bolts go through the frame-rail at their attaching points and use the doubling plates on the inside of the frame-rail for added strength / support.

We recommend you check the torque of all bolts after about two weeks, and after every off-road / trail run to assure tightness.

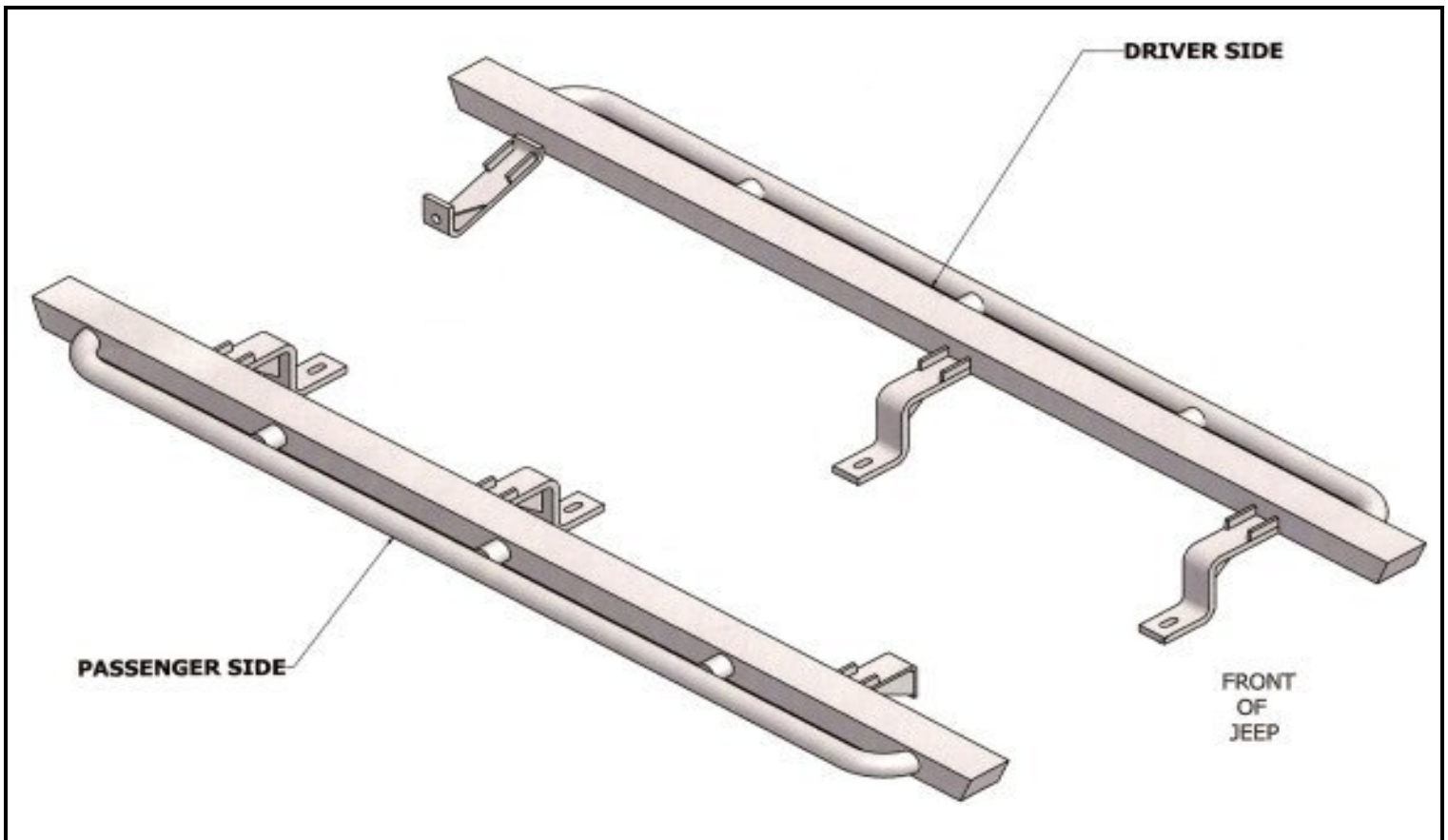




Photo 1 - Driver side forward mount.



Photo 2 - Driver side center mount.



Photo 3 - Driver side rear mount.



Photo 4 - Passenger side forward mount.



Photo 5 - Passenger side center mount.

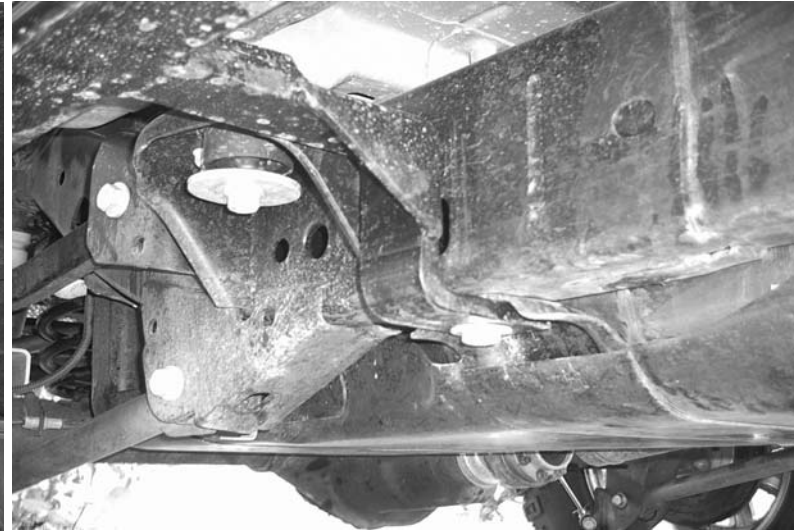


Photo 6 - Passenger side rear mount.

Check out our website for the latest in Body Armor gear, tech bulletins, and our new vehicle photo gallery