



Installation Instructions:

(Part # SB76901)

2007-2010 Jeep JK Unlimited Cage Kit (2-Door) Kit

(Part # SB76902)

2007-2010 Jeep JK Unlimited Cage Kit (4-Door) Kit

NOTE: Carefully read entire instructions thoroughly before attempting to install this part.

(SB76902) Parts Included	Qty	(SB76901) Parts Included	Qty
94-8155 Front Upright: Drvr	1	94-8155 Front Upright: Drvr	1
94-8158 Front Upright: Pass	1	94-8158 Front Upright: Pass	1
94-8164 Dash Bar	1	94-8164 Dash Bar	1
94-8162 Cross Bar: Front Top	1	94-8162 Cross Bar: Front Top	1
94-8160 Main Plate: Main Plate	1	94-8160 Main Plate: Main Plate	1
94-8166 Main Plate: Rear Top	1	94-8242 Rear Tube Assembly	1
96-7288 Drill Template: Drvr	1	96-7288 Drill Template: Drvr	1
96-7289 Drill Template: Pass	1	96-7289 Drill Template: Pass	1
90-2038 Sleeve	2	94-4344 Tube Clamp	8
94-4344 Tube Clamp	4	94-4407 LG Quarter Clamps	4
Hardware Bag (90-6806)	1	Hardware Bag (90-6854)	1

INSTALLATION:

Step 1: Place the vehicle on a flat, level surface and engage the parking brake.

Step 2: If equipped fold down your soft top or remove your hardtop.

Step 3: Remove your sun visors and front top corner plastic molded piece. (Fig 1, 2, 3)



(Fig 1)



(Fig 2)



(Fig 3)

For Technical Support/Warranty Information please call 310-762-9944



Installation Instructions:

(Part # SB76901)

2007-2010 Jeep JK Unlimited Cage Kit (2-Door) Kit

(Part # SB76902)

2007-2010 Jeep JK Unlimited Cage Kit (4-Door) Kit

Step 4: Unzip the sport bar padding covers on the tubes above each door. Remove the hard foam core underneath. Use care when doing so.

Step 5: Remove the vehicles doors and the top inside hinge. Take off both side panels from the side of your front dash. (Fig 4)

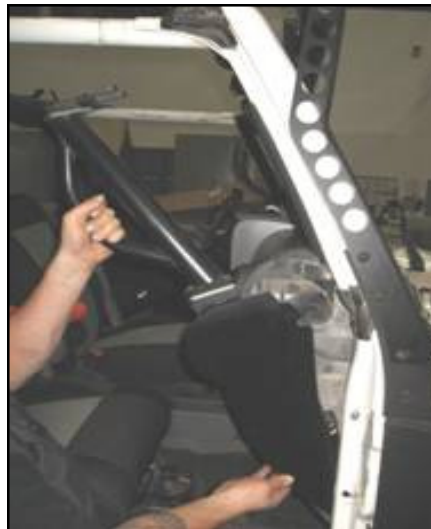
Step 6: Install the passenger side drill template (7289) by attaching it to the top inner hinge location on the vehicle using the OEM hardware. (Fig 8)

Step 7: Using the drill template as a guide, drill the (2) holes using a 1/4" drill bit. (Fig 9)

NOTE: Always use caution when drilling.



(Fig 4)



(Fig 5)



(Fig 6)



(Fig 7)



(Fig 8)

For Technical Support/Warranty Information please call 310-762-9944



Installation Instructions:

(Part # SB76901)

2007-2010 Jeep JK Unlimited Cage Kit (2-Door) Kit

(Part # SB76902)

2007-2010 Jeep JK Unlimited Cage Kit (4-Door) Kit

Step 8: Remove the drill template and drill out the (2) 1/4" holes using a 7/16" drill bit.

Note: It is recommended to use a step drill bit to prevent the drill bit from walking.

Step 9: Install the passenger side vertical front upright; by first sliding the lower corner in first rotating inward slightly and then pushing up horizontally. (Fig 5,6)

Step 10: Line the top of the upright with the two holes near the windshield visor mount. (Fig 7) You may need to knock it into place in order to line up the holes. Re-install the bolts and tighten snug.

Step 11: Repeat steps 5-9 for the opposite side of the vehicle. Re-install the inner top OEM door hinges.

Step 12: Install the passenger side vertical front upright by securing the top bolts and two button head bolts through the door jam area. Do not tighten hardware at this time. (Fig 7, 10, 11)



(Fig 9)



(Fig 10)



(Fig 11)

Step 13: Set dash bar across dash. Loosely attach it to the passenger side. (Fig 12, 13, 14)

For Technical Support/Warranty Information please call 310-762-9944

Smittybilt, 400 W Artesia, Compton, CA 90220



Installation Instructions:

(Part # SB76901)

2007-2010 Jeep JK Unlimited Cage Kit (2-Door) Kit

(Part # SB76902)

2007-2010 Jeep JK Unlimited Cage Kit (4-Door) Kit

Step 14: Install the drive side vertical front upright using the same process as Step 11 and attaching the dash bar in at the same time. After everything is connected proceed to tighten all bolts completely.



(Fig 12)

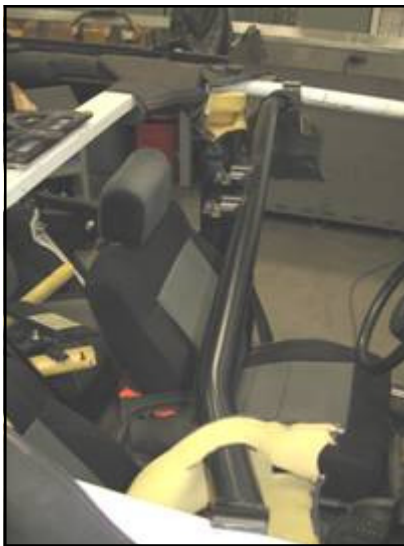


(Fig 13)



(Fig 14)

Step 15: Cut a slot in the OEM top side sport bar cover on the inside part of the cover. (Fig 15, 16)



(Fig 15)



(Fig 16)

Step 16: Install the top front bar (The bend points towards the rear and up) Slide the ends of the bar through the slots you made in the cover. It may be easier to do this at a slight angle first. Move bar forward parallel with the windshield frame. Position it as far forwards as you can.

For Technical Support/Warranty Information please call 310-762-9944



Installation Instructions:

(Part # SB76901)

2007-2010 Jeep JK Unlimited Cage Kit (2-Door) Kit

(Part # SB76902)

2007-2010 Jeep JK Unlimited Cage Kit (4-Door) Kit

Step 17: Loosely attach front clamp brackets with the included socket cap bolts.(Fig 17, 18



(Fig 17)



(Fig 18)



(Fig 19)

Step 18: Remove the center sound bar.

Step 19: Install the front main plate. (From the front top bar back to the center roll cage) Fig 16 Tighten the front where it clamps to the front cross bar snug. (Fig 19)

Step 20: Making sure the rear is centered mark the holes. Then remove the main plate and center punch the holes and drill out to 1/2" (Fig 20, 21)



(Fig 20)



(Fig 21)



(Fig 22)

Step 21: Set the rear main plate on top of the front main plate on the center sport bar. (Fig 22)

For Technical Support/Warranty Information please call 310-762-9944



Installation Instructions:

(Part # SB76901)

2007-2010 Jeep JK Unlimited Cage Kit (2-Door) Kit

(Part # SB76902)

2007-2010 Jeep JK Unlimited Cage Kit (4-Door) Kit

Step 22: 76902 Kit Only: Mark the rear sport cover where the rear of the rear top plate would mount. Remove the rear plate and carefully make a slot in the cover so the clamps can go through. You will also need to notch the foam with a sharp razor knife in order for the bracket to sit flush. (Fig 23, 24, 25)



(Fig 23)



(Fig 24)



(Fig 25)

Step 23: 76902 Kit Only: The rear of the rear main plate mounts into factory holes. Once padding is slotted and foam is notched reinstall the rear main plate by installing the included tube spacers and hex-bolts. Do not tighten hardware completely. (Fig 26, 27, 28, 29, 30)



(Fig 26)



(Fig 27)



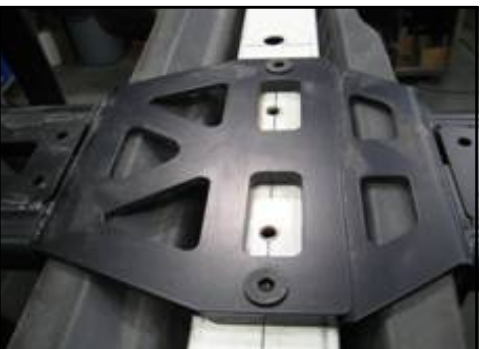
(Fig 28)



(Fig 29)



(Fig 30)



(Fig 31)

For Technical Support/Warranty Information please call 310-762-9944



Installation Instructions:

(Part # SB76901)

2007-2010 Jeep JK Unlimited Cage Kit (2-Door) Kit

(Part # SB76902)

2007-2010 Jeep JK Unlimited Cage Kit (4-Door) Kit

Step 24: 76901 Kit Only: Install the rear bar with the bend points toward the rear of the vehicle facing up. Do not tighten at this time. Install the rear center bar and line up with front main plate.

Step 25: Secure both main plates on the center sport bar with included Allen head hardware. (Fig 31) Do not tighten completely at this time.

Step 26: Reinstall the foam and padding on the roll bar brace bars above the doors. You will also need to trim these in order to clear the front top bar of the front main plate. (Fig 32)

Step 27: Reinstall the sound bar. It will sit a little lower now. You can trim the lip edge on the inside of the large diameter hole that the "T" top screw goes into.

Step 28: OPTIONAL: The front corner molded pieces previously removed can be reinstalled with some careful trimming. If trimming use the installed vertical front uprights as a guide on where to trim. Installation of corner pieces is optional. (Fig 33, 34)

Step 29: SOFT TOPS: If you are using your door surrounds you will need to trim a portion of the front clamp on both sides in order to clear the front top cage bar. This can easily be done with a hacksaw. Hold the surround up into position and mark the area that needs to be cut off and then carefully trim it.



(Fig 32)



(Fig 33)



(Fig 34)

Step 30: Go back and tighten all hardware completely. Installation is now complete.

Step 31: Installation is now complete.

For Technical Support/Warranty Information please call 310-762-9944



Installation Instructions:

(Part # SB76901)

2007-2010 Jeep JK Unlimited Cage Kit (2-Door) Kit

(Part # SB76902)

2007-2010 Jeep JK Unlimited Cage Kit (4-Door) Kit



For Technical Support/Warranty Information please call 310-762-9944

Smittybilt, 400 W Artesia, Compton, CA 90220



Installation Instructions:

(Part # SB76901)

2007-2010 Jeep JK Unlimited Cage Kit (2-Door) Kit

(Part # SB76902)

2007-2010 Jeep JK Unlimited Cage Kit (4-Door) Kit

Use this only as a guide for hardware without a called out torque specification in the instruction manual.

Bolt Torque and ID						
Decimal System			Metric System			
All Torques in Ft. Lbs. Maximums						
Bolt Size	Grade 5	Grade 8	Bolt Size	Class 9.8	Class 10.9	Class 12.9
5/16	15	20	M6	5	9	12
3/8	30	45	M8	18	23	27
7/16	45	60	M10	32	46	50
1/2	65	90	M12	55	75	90
9/16	95	130	M14	85	120	145
5/8	135	175	M16	130	165	210
3/4	185	280	M18	170	240	290

<p>1/2-13x1.75 HHCS D T L X</p> <p>Grade 5 Grade 8 (No. of Marks + 2)</p>	<p>M12-1.25x50 HHCS D T L X</p> <p>P = Property Class (Bolt Strength) D = Nominal Diameter (Millimeters) T = Thread Pitch (Thread Width, mm) L = Length (Millimeters) X = Description (Hex Head Cap Screw)</p>

Product cleaning and maintenance instructions

Stainless Steel Finish – Aluminum polish may be used to polish small scratches and scuffs on the finish. Mild soap, window or glass cleaner may be used to clean the finish. **Dual state powder coat finish** – Mild soap, window or glass cleaner may be used to clean the finish. In order to protect the finish, you may wax your product on a regular basis with pure carnauba automotive wax. Do not use any types of soap, polish or was that contains abrasive that could damage the finish. **Textured coated finishes** should be cleaned with a mild soap on a damp sponge. Do not apply polish or was that requires to be removed by means of buffing. This type of wax is commonly used at car wash facilities. **Chrome Finish** – Mild soap, window or glass cleaner may be used to clean the finish. In order to protect the finish you should wax your product on a regular basis with pure carnauba automotive wax. Do not use any types of soap, polish or was that contains abrasive that could damage the finish.

For Technical Support/Warranty Information please call 310-762-9944



Installation Instructions:

(Part # SB76901)

2007-2010 Jeep JK Unlimited Cage Kit (2-Door) Kit

(Part # SB76902)

2007-2010 Jeep JK Unlimited Cage Kit (4-Door) Kit

Limited Warranties

Smittybilt's products are covered under the following limited warranties only. Note that the duration of the limited warranty differs according to the material and finish of the product purchased. Subject to the duration and conditions of the limited warranty stated below, Smittybilt warrants to the original retail purchaser that its products are free from defects in material and workmanship. All other warranties and representations express or implied, are hereby disclaimed, including fitness for merchantability and buyer's intended use or purpose. All parts are sold "AS IS" except for the limited warranties granted herein. Buyer assumes all risks as to the selection, suitability and performance of all goods and products selected. This limited warranty does not cover damage or impairment in any part due to misuse, improper installation, accident or contact with on-road or off-road hazards, product modification, improper or inadequate cleaning and/or maintenance. Smittybilt is not responsible for items damaged during shipping. This warranty is not transferable from the original buyer. For the original Buyer to be eligible for the limited warranty coverage, the Buyer must provide proof of purchase. Smittybilt strongly recommends returning the warranty registration card.

Customer's remedy hereunder shall be limited only to repair or replacement (at Smittybilt's option) of any defective part(s) returned to Smittybilt at customer's expense. The determination of whether or not a returned part is defective or subject to coverage under the limited warranties stated herein shall be made at Smittybilt's sole discretion.

Duration of Limited Warranty

Limited Lifetime Warranty on Stainless Steel Products -

Smittybilt stainless steel products carry the foregoing limited repair or replacement warranty against workmanship and defects in the material so long as the original purchaser retains the original stainless steel parts.

Limited Five (5) Year / 50,000 Mile Pro-Rata Warranty (whichever occurs first) on Dual-Stage Powder Coating Products -

Smittybilt dual-stage powder coated products carry the foregoing limited repair or replacement warranty for a period of (5) years or 50,000 miles (whichever occurs first) from date of purchase against workmanship and defects in the material, provided that any claim submitted after (2.5) years from date of purchase shall, if accepted, be satisfied by Smittybilt offering customer a credit on the purchase of a replacement product equal to fifty percent (50%) of customer's initial purchase price.

Limited Three (3) Year / 36,000 Mile Pro-Rata Warranty (whichever occurs first) on Chrome Products-

Smittybilt chrome products finished carry the foregoing limited repair or replacement warranty for a period of three (3) years or 36,000 miles against workmanship and defects in the material (whichever occurs first) from the date of purchase.

To assure product quality, Smittybilt reserves the right to change product design, material, specification and finishes without prior notice to customers. This limited warranty gives you specific legal rights and you may also have other rights, which may vary from state to state. Some states do not allow limitations on how long an implied warranty lasts, so the above limitations may not apply as to you. Also, some states do not allow the exclusion or limitation of incidental or consequential damages, so the above limitations or exclusions may not apply to you. Smittybilt reserves the right to discontinue product lines and substitute products, or provide other remedies than those listed in this limited warranty for those discontinued products.

For Technical Support/Warranty Information please call 310-762-9944

Smittybilt, 400 W Artesia, Compton, CA 90220