



**IF YOU'RE MISSING
HARDWARE OR
COMPONENTS OR IN
NEED OF TECHNICAL
ASSISTANCE CONTACT
SMITTYBILT
DIRECTLY AT
1-800-776-0767**

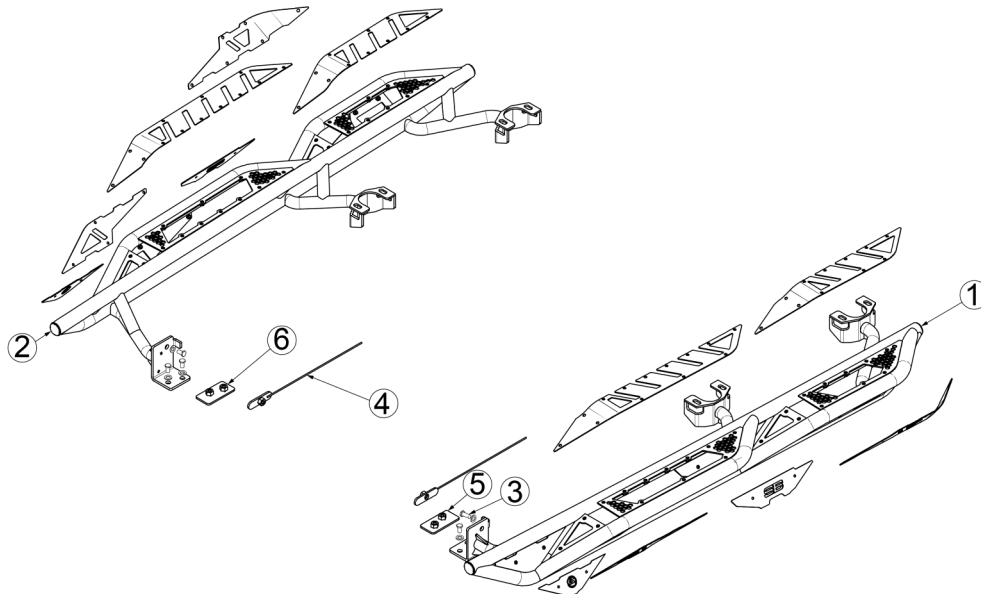
info@smittybilt.com



Installation Instructions:

(Part # SB77633 2DR, SB77634 4DR,
Apollo 77733 2DR, 77734 4DR)
2018+ Jeep JL Sliders/Steps

NOTE: Carefully read entire instructions thoroughly before attempting to install this part.



Smittybilt SB77633, 2 door	Qty	ID
77633DS Driver side	1	1
77633PS Passenger side	1	2
SB7734-02 M12 hardware pack	1	3
401TU215 Wired nut-plate	2	4
401TU216 Driver side nut-plate	1	5
401TU217 Passenger side nut-plate	1	6

Apollo 77733, 2 door	Qty	ID
77733DS Driver side	1	1
77733PS Passenger side	1	2
SB7734-02 M12 hardware pack	1	3
401TU215 Wired nut-plate	2	4
401TU216 Driver side nut-plate	1	5
401TU217 Passenger side nut-plate	1	6

Smittybilt SB77634, 4 door	Qty	ID
77634DS Driver side	1	1
77634PS Passenger side	1	2
SB7734-02 M12 hardware pack	1	3
401TU215 Wired nut-plate	2	4
401TU216 Driver side nut-plate	1	5
401TU217 Passenger side nut-plate	1	6

Apollo 77734, 4door	Qty	ID
77734DS Driver side	1	1
77734PS Passenger side	1	2
SB7734-02 M12 hardware pack	1	3
401TU215 Wired nut-plate	2	4
401TU216 Driver side nut-plate	1	5
401TU217 Passenger side nut-plate	1	6

Tools Required:

Torque wrench

Pliers

Metric Allen bit set

Metric socket & wrench set

For Technical Support/Warranty Information please call 310-762-9944



Installation Instructions:

(Part # SB77633 2DR, SB77634 4DR,
Apollo 77733 2DR, 77734 4DR)
2018+ Jeep JL Sliders/Steps

INSTALLATION:

Check all four wheels and make sure parking brake is engaged before starting this installation procedure.

Step 1 : Remove any OE rub rails or running boards. Consult your owner's manual if needed.

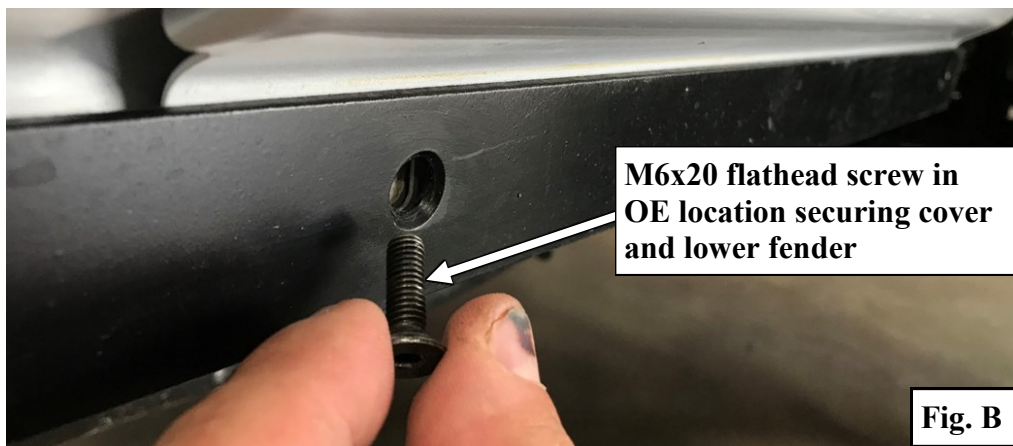
Step 2 : Open the box containing new sliders, check all parts against the bill of material. If anything is missing, then contact Smittybilt technical support immediately.

Step 3 : Remove the (2 each side) OE M6 bolts which is securing the lower portion of the front fenders (**Fig A**).

Note: Pinch Weld plates are used only with the 77634



Step 4 : Locate the (2) pinch-weld covers and M6 hardware. Starting on either side of your vehicle, with the SMITTYBILT logo at the rearmost corner, position the pinch-weld in place. Using the OE locations from the previous step, secure with the M6x20 flat head screws provided (**Fig B**). Tighten just snug at this time.



For Technical Support/Warranty Information please call 310-762-9944



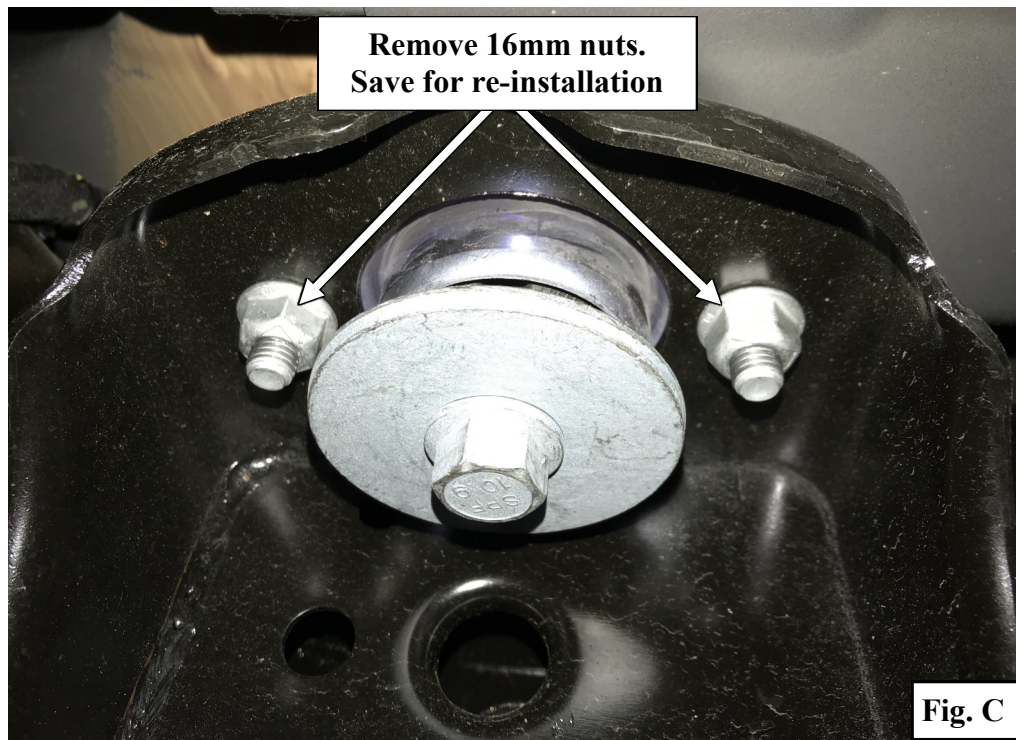
Installation Instructions:

(Part # SB77633 2DR, SB77634 4DR,
Apollo 77733 2DR, 77734 4DR)
2018+ Jeep JL Sliders/Steps

Step 5 : Install M6 flathead screws in the remaining locations using provided M6 fender washers and nylock nuts on the back side. Adjust the pinch weld cover to your liking and torque M6 hardware to **8ft-lbs**. Repeat process on opposite side of vehicle.

Step 6 : Locate the body mounts below the doors, under the vehicle. With a 16mm socket remove the **(2 each)** outer nuts (**Fig. C**).

Note : *4 door models will have two body mounts per side, 2 door models will only have one.*



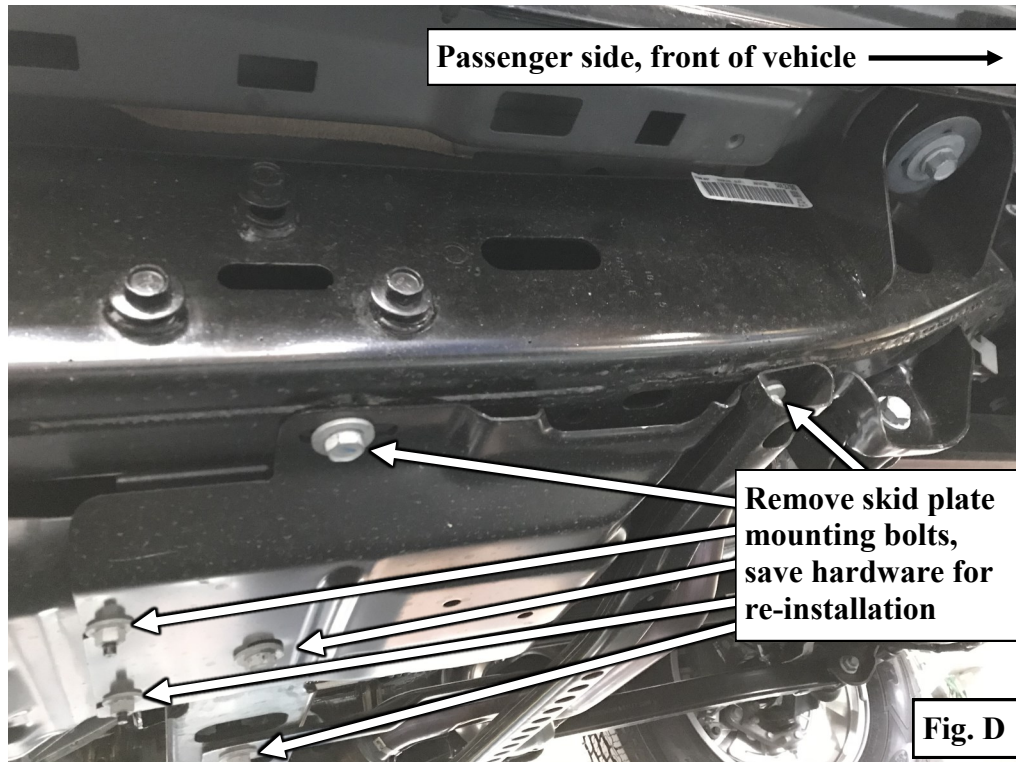
For Technical Support/Warranty Information please call 310-762-9944



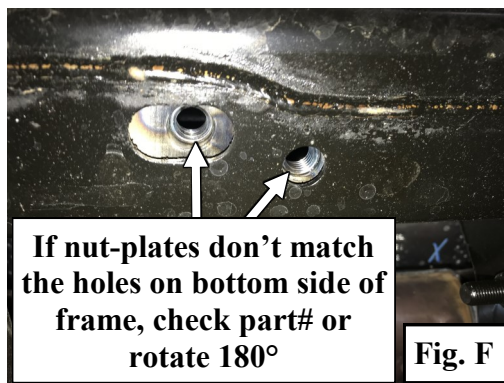
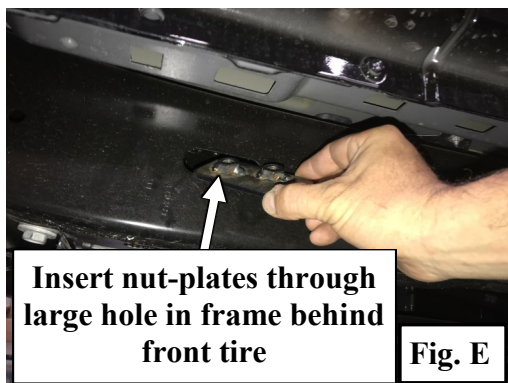
Installation Instructions:

(Part # SB77633 2DR, SB77634 4DR,
Apollo 77733 2DR, 77734 4DR)
2018+ Jeep JL Sliders/Steps

Step 7 : Looking at the passenger side frame just behind the front tire, if your vehicle has OE skid plates. Remove the mounting bolts (**Fig D**) to allow installation of the forward most mounting bracket.



Step 8 : Locate nut-plates (401TU216 drv. and 401TU217 pass.) and insert them into the corresponding frame locations using the large oval hole just behind front tire on each side (**Fig. E**). Adjust them until they align correctly with the holes in the bottom of the frame (**Fig F**).



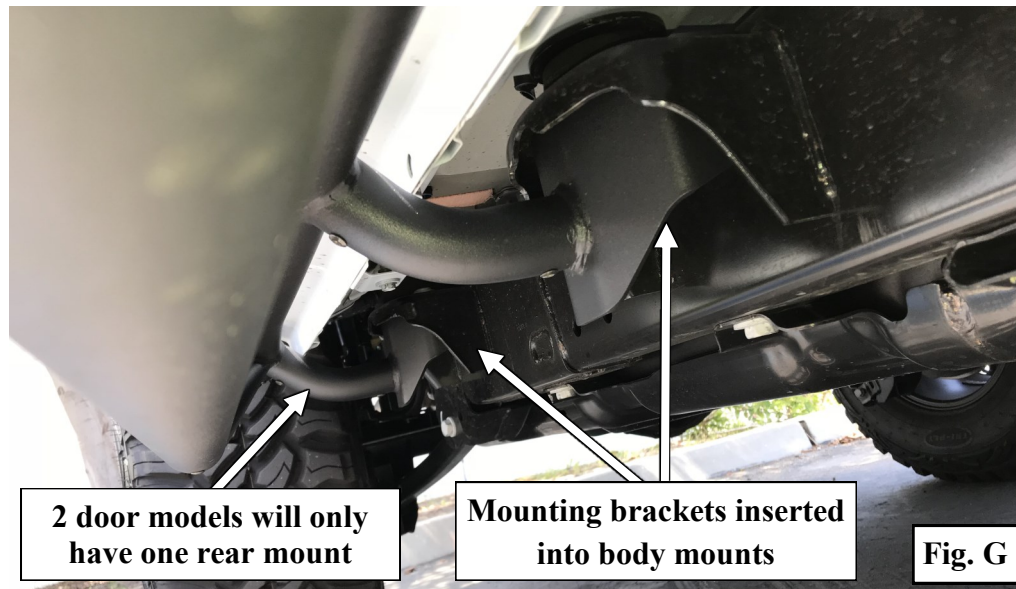
For Technical Support/Warranty Information please call 310-762-9944



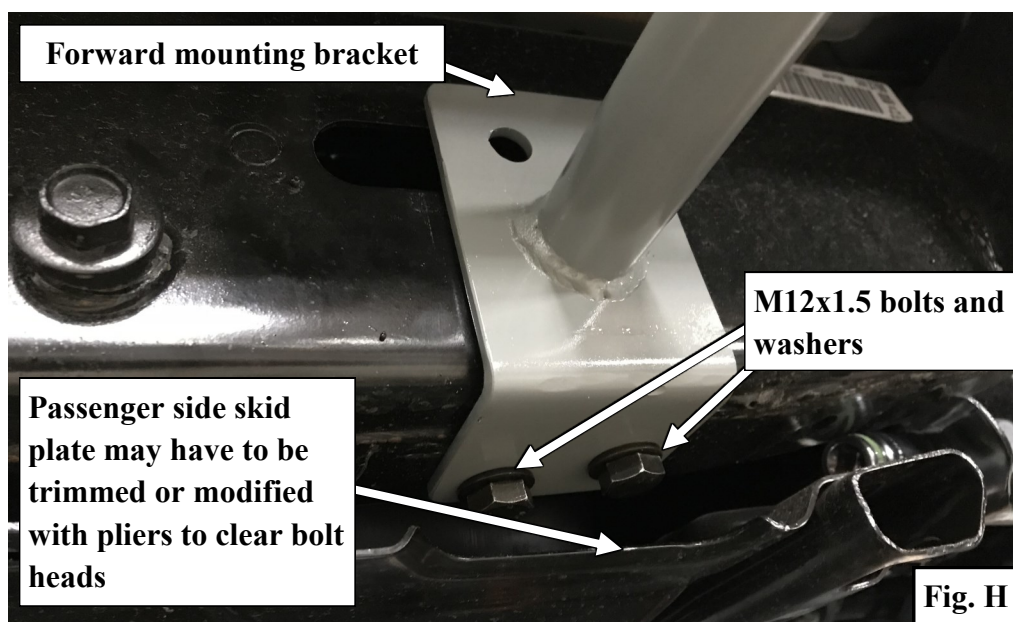
Installation Instructions:

(Part # SB77633 2DR, SB77634 4DR,
Apollo 77733 2DR, 77734 4DR)
2018+ Jeep JL Sliders/Steps

Step 9 : Match the sliders/steps to their corresponding sides of the vehicle. Carefully lift and insert the mounting brackets into the body mounts on the frame (**Fig G**). Secure in place by loosely re-installing the OE nuts removed in **Step 6 (Fig C)**. Do not tighten this hardware yet. Repeat this step on opposite side of vehicle.



Step 10 : Install (2 each side) M12x1.5 bolts and washers through the lower holes into the previously installed nut-plates. Adjust slider/step and tighten currently installed front and rear mounting hardware hand tight. Repeat process on opposite side of vehicle (**Fig H**).



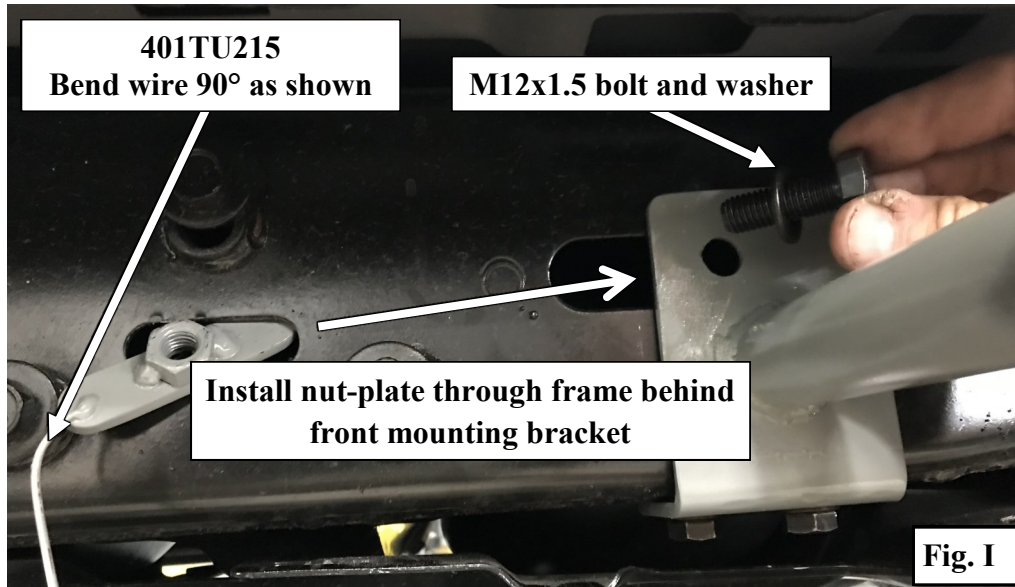
For Technical Support/Warranty Information please call 310-762-9944



Installation Instructions:

(Part # SB77633 2DR, SB77634 4DR,
Apollo 77733 2DR, 77734 4DR)
2018+ Jeep JL Sliders/Steps

Step 11: Locate wired nut-plate (401TU215). Bend the wire 90° at the nut-plate and insert it through the smaller hole in the frame (**Fig I**). Run it up the frame and behind the forward most mounting bracket. Make sure that it is perpendicular to the frame with smooth side facing the mounting bracket. Secure with provided M12x1.5 bolt and washer, tighten hand tight. Repeat process on opposite side of vehicle.



For Technical Support/Warranty Information please call 310-762-9944



Installation Instructions: *(Part # SB77633 2DR, SB77634 4DR, Apollo 77733 2DR, 77734 4DR) 2018+ Jeep JL Sliders/Steps*

Step 12: When both sides are adjusted, and you're satisfied with fitment, tighten and torque all hardware to 50ft-lbs. Install is complete (Fig J, SB77634) (Fig K, Apollo 77734).



For Technical Support/Warranty Information please call 310-762-9944



Installation Instructions:

(Part # SB77633 2DR, SB77634 4DR,
Apollo 77733 2DR, 77734 4DR)
2018+ Jeep JL Sliders/Steps

Use this only as a guide for hardware without a called out torque specification in the instruction manual.

Bolt Torque and ID						
Decimal System			Metric System			
All Torques in Ft. Lbs. Maximums						
Bolt Size	Grade 5	Grade 8	Bolt Size	Class 9.8	Class 10.9	Class 12.9
5/16	15	20	M6	5	9	12
3/8	30	45	M8	18	23	27
7/16	45	60	M10	32	45	50
1/2	65	90	M12	55	75	90
9/16	95	130	M14	85	120	145
5/8	135	175	M16	130	165	210
3/4	185	280	M18	170	240	290

<p>1/2-13x1.75 HHCS</p> <p>D T L X</p>	<p>M12-1.25x50 HHCS</p> <p>D T L X</p>
<p>Grade 5 Grade 8</p> <p>(No. of Marks + 2)</p>	<p>P = Property Class (Bolt Strength)</p>
<p>G = Grade (Bolt Strength)</p> <p>D = Nominal Diameter (Inches)</p> <p>T = Thread Count (Threads per Inch)</p> <p>L = Length (Inches)</p> <p>X = Description (Hex Head Cap Screw)</p>	<p>D = Nominal Diameter (Millimeters)</p> <p>T = Thread Pitch (Thread Width, mm)</p> <p>L = Length (Millimeters)</p> <p>X = Description (Hex Head Cap Screw)</p>

For Technical Support/Warranty Information please call 310-762-9944



Installation Instructions:

*(Part # SB77633 2DR, SB77634 4DR,
Apollo 77733 2DR, 77734 4DR)
2018+ Jeep JL Sliders/Steps*

Product cleaning and maintenance instructions

Stainless Steel Finish – Aluminum polish may be used to polish small scratches and scuffs on the finish. Mild soap, window or glass cleaner may be used to clean the finish. Dual state powder coat finish – Mild soap, window or glass cleaner may be used to clean the finish. In order to protect the finish, you may wax your product on a regular basis with pure carnauba automotive wax. Do not use any types of soap, polish or was that contains abrasive that could damage the finish. Textured coated finishes should be cleaned with a mild soap on a damp sponge. Do not apply polish or was that requires to be removed by means of buffing. This type of wax is commonly used at car wash facilities. Chrome Finish – Mild soap, window or glass cleaner may be used to clean the finish. In order to protect the finish, you should wax your product on a regular basis with pure carnauba automotive wax. Do not use any types of soap, polish or was that contains abrasive that could damage the finish.

Limited Warranties

Smittybilt's products are covered under the following limited warranties only. Note that the duration of the limited warranty differs according to the material and finish of the product purchased. Subject to the duration and conditions of the limited warranty stated below, Smittybilt warrants to the original retail purchaser that its products are free from defects in material and workmanship. All other warranties and representations express or implied, are hereby disclaimed, including fitness for merchantability and buyer's intended use or purpose. All parts are sold "AS IS" except for the limited warranties granted herein. Buyer assumes all risks as to the selection, suitability and performance of all goods and products selected. This limited warranty does not cover damage or impairment in any part due to misuse, improper installation, accident or contact with on-road or off-road hazards, product modification, improper or inadequate cleaning and/or maintenance. Smittybilt is not responsible for items damaged during shipping. This warranty is not transferable from the original buyer. For the original Buyer to be eligible for the limited warranty coverage, the Buyer must provide proof of purchase. Smittybilt strongly recommends returning the warranty registration card.

Customer's remedy hereunder shall be limited only to repair or replacement (at Smittybilt's option) of any defective part(s) returned to Smittybilt at customer's expense. The determination of whether or not a returned part is defective or subject to coverage under the limited warranties stated herein shall be made at Smittybilt's sole discretion.

To assure product quality, Smittybilt reserves the right to change product design, material, specification and finishes without prior notice to customers. This limited warranty gives you specific legal rights and you may also have other rights, which may vary from state to state. Some states do not allow limitations on how long an implied warranty lasts, so the above limitations may not apply as to you. Also, some states do not allow the exclusion or limitation of incidental or consequential damages, so the above limitations or exclusions may not apply to you. Smittybilt reserves the right to discontinue product lines and substitute products or provide other remedies than those listed in this limited warranty for those discontinued products.

Warning

Rollover and other types of vehicle accidents may result in serious injury or death to you, your passengers and others sharing the road. Smittybilt accessories are decorative and are not intended to reduce or avoid injury or damage in the event of an accident. The weight and location of Smittybilt accessories may affect your vehicles' handling, stability and performance, creating an increased risk of accident or rollover. Before installing any accessory, check state laws and assure that the accessory will not obscure any lights or interfere with proper operation on your vehicle's safety equipment. Consult your owner's manual and the Smittybilt instructions, or additional safety information. Smittybilt products, nor the warnings contained herein, are not a substitute for your safe driving. Don't drink and drive, always use seat belts and don't drive faster than conditions permit.

For Technical Support/Warranty Information please call 310-762-9944

Smittybilt, 400 W. Artesia, Compton, CA 90220



NOTE: Please take time to fill in the information requested below. It is highly recommended to keep this with the instructions and warranty information in a safe location. This will help with any warranty or customer service issues if they should arise. Please write down the DOP# that is located on the outside of the box and or on part or hardware box. (Pictured Below)



Part Number: _____
Date of Purchase: _____
Where did you purchase this product? _____
Store or catalog name: _____
Store Location: _____
Invoice # _____
DOP# _____
Who installed or will install your Smittybilt product? _____

For Technical Support/Warranty Information please call 310-762-9944

Smittybilt, 400 West Artesia Blvd, Compton, CA 90220