






# Installation Instructions TrailMax™ Dash Overlays

## Vehicle Application:

- Jeep JK Wrangler and Wrangler Unlimited  
2007 – Current  
Part Number: 81701 Vehicles with Manual Windows  
Part Number: 81702 Wrangler with Power Windows  
Part Number: 81703 Wrangler Unlimited with Power Windows

[www.Bestop.com](http://www.Bestop.com) - We're here to help! Visit our web site and click on "[Ask a Question](#)". Click here for more [Jeep® Accessories by Bestop](#).

INSTALLATION TIME	SKILL LEVEL
 1/4 Hour	 1 - Easy

TOOLS
 Safety Glasses



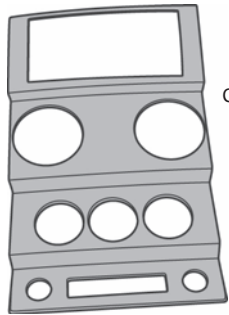
**⚠ WARNING** This product is designed primarily to enhance the appearance of the vehicle. Do not rely in any way on the components of this product to protect against injury or death in the event of an accident. Never operate the vehicle in excess of manufacturer's specifications.

### WEAR SEAT BELTS AT ALL TIMES

Read and follow, precisely, all installation instructions provided when installing product. Failure to do so may result in a poor fit and could place occupants of the vehicle in a potentially dangerous situation.

# TrailMax™ Dash Overlay Installation Instructions

## Parts List and Hardware Identification



□ Center Stack Overlay, Qty - 1



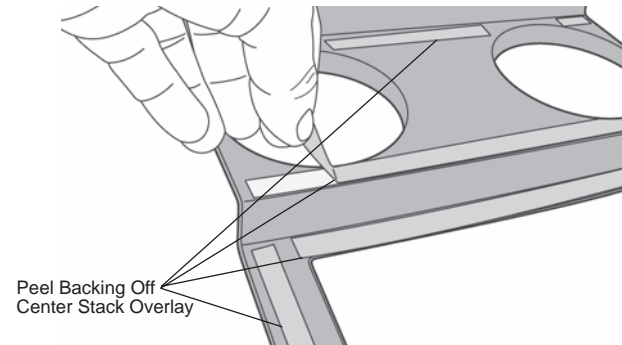
□ Door Bezel Overlay, Qty - 4



Primer Wipe □

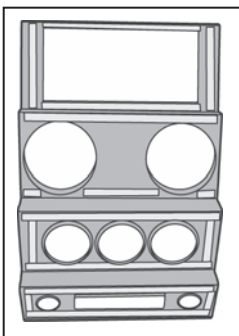
## 2 Remove the Backing Tape

Peel the backing tape off the Center Stack Overlay.



## 1 Prepare Center Stack

Locate the adhesive areas on the back of the Center Stack Overlay. Use the Primer Wipe provided to wipe the corresponding areas on the Center Stack.



Adhesive Areas on Back of Center Stack Overlay

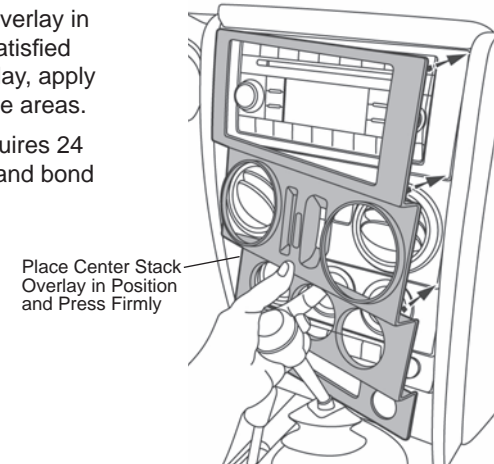


Clean Areas for Adhesive

## 3 Install Center Stack Overlay

Position the Center Stack Overlay in the vehicle. Once you are satisfied with the position of the overlay, apply firm pressure to the adhesive areas.

**NOTE** The adhesive requires 24 hours to fully set and bond to the vehicle.

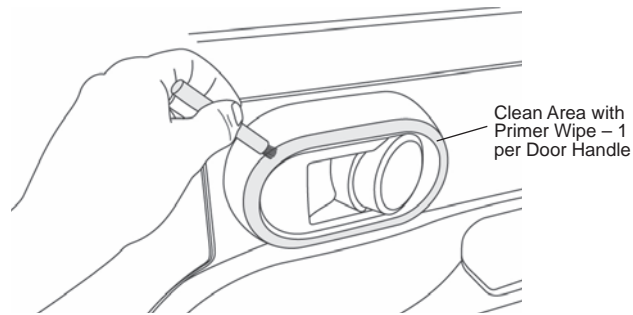


Place Center Stack Overlay in Position and Press Firmly

## TrailMax™ Dash Overlay Installation Instructions

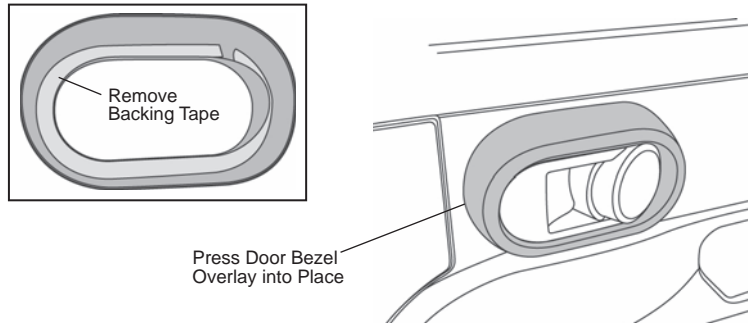
### 4 Prepare Door Handles

Use Primer Wipe to clean the area on each door handle that corresponds to the adhesive on the Door Bezel Overlays. Use a new Primer Wipe to clean each door handle.



### 5 Install Door Bezel Overlays

Peel off the backing tape off one of the Door Bezel Overlays. Place the Overlay in position and press firmly into place. Repeat with the other Door Bezel Overlays.



### LIMITED WARRANTY

We warrant our product to be free from defects in material and workmanship, for the terms specified below, provided there has been normal use and proper maintenance. This warranty applies to the original purchaser only. All remedies under this warranty are limited to the repair or replacement of any item or items found by the factory to be defective within the time period specified. If you have a warranty claim, first you must call our factory at the number below for instructions. You must retain proof of purchase and submit a copy with any items returned for warranty work. Upon completion of warranty work, if any, we will return the repaired or replaced item or items to you freight prepaid. Damage to our products caused by accidents, fire, vandalism, negligence, misinstallation, misuse, Acts of God, or by defective parts not manufactured by us, is not covered under this warranty.

THE WARRANTY TIME PERIOD IS AS FOLLOWS FOR REPLACE-A-TOP™, SAILCLOTH REPLACE-A-TOP™, SUPERTOP®, SUPERTOP® REPLACEMENT SKINS, SUNRIDER®, AND TIGERTOP®: TWO YEARS FROM DATE OF PURCHASE.

THE WARRANTY TIME PERIOD IS AS FOLLOWS FOR ALL OTHER “SOFT GOODS” MANUFACTURED BY OUR COMPANY (USING PRIMARILY VINYL, PLASTICS, AND/OR FOAM): ONE YEAR FROM DATE OF PURCHASE.

THE WARRANTY TIME PERIOD IS AS FOLLOWS FOR ALL OTHER “HARD GOODS” MANUFACTURED BY OUR COMPANY (USING PRIMARILY METALS, PLASTICS, AND/OR FIBERGLASS): ONE YEAR FROM DATE OF PURCHASE.

ANY IMPLIED WARRANTIES OF MERCHANTABILITY AND/OR FITNESS FOR A PARTICULAR PURPOSE CREATED HEREBY ARE LIMITED IN DURATION TO THE SAME DURATION AND SCOPE AS THE EXPRESS WRITTEN WARRANTY. OUR COMPANY SHALL NOT BE LIABLE FOR ANY INCIDENTAL OR CONSEQUENTIAL DAMAGE.

Some states do not allow limitations on how long an implied warranty lasts, or the exclusion or limitation of incidental or consequential damages, so the above limitations or exclusions may not apply to you. This warranty gives you specific legal rights, and you may also have other rights which vary from state to state.



For further information or request for warranty work, please contact:  
Bestop Inc. Customer Service  
Toll-Free: (800)845-3567  
Main: (303)465-1755  
E-mail: [csbestop@Bestop.com](mailto:csbestop@Bestop.com)  
Website: [www.Bestop.com](http://www.Bestop.com)