



# GUARDIAN STAMPED BUMPER INSTALLATION INSTRUCTIONS

Part number 81-20302

Installation for JK: Pgs. 3-7  
Installation for JL/JT: Pgs. 8-13

Fits: 07-18 Jeep Wrangler (JK)  
18-20 Jeep Wrangler (JL)  
2020 Jeep Gladiator (JT)



Thank you for purchasing the Guardian<sup>®</sup> Stamped bumper. Please take a few minutes to read and thoroughly familiarize yourself with the installation procedures in this manual. Following the steps as outlined will save you time and help reduce mistakes. Once the instructions are reviewed, if you feel that you are not capable of safely installing the parts seek the help of a qualified installation expert to help you complete the job. The manufacture is in no way responsible for any personal injury or vehicle damage that may occur during the installation of this product.

For Technical Assistance call: 888-988-8348

## IMPORTANT NOTICE

The new Guardian<sup>®</sup> Stamped Bumper comes complete with all the hardware necessary to install it on vehicles equipped with up to 40 inch tires.

Mounting kit 81-20301-01 has been specifically designed for installing this product on vehicles equipped with tires over 40 inches. Please contact your favorite parts supplier or visit our website for more information. [paramount-automotive.com](http://paramount-automotive.com)



Guardian bumper shown installed on  
2019 Jeep Wrangler (JL)



## COMPONENTS AND HARDWARE

#	QTY		#	QTY	
<b>Components</b>					
A	1	Front Bumper	B	1	Front Hoop
C	1	Skid Plate	D	1	Aftermarket Frame Rail for JL/JT
E	1	Winch Plate	F	2	JL Fog Light Adaptor Bracket
<b>Hardware for Winch plate</b>					
G	16	M12 Flat Washer	H	8	M12 Split Washer
I	8	M12x55mm Hex Head Bolt	J	8	M12 Hex Nut
<b>Hardware for Skid Plate JL and JT</b>					
K	2	M10 Hex Nut	L	2	M10 Flat Washer
M	2	M10 Split Washer	N	2	M10x30mm Allen Head Bolt
O	2	M10 Large Washer			

<b>Hardware for skid plate and fog lights</b>					
P	8	M8 Large Washer	Q	8	M8 Split Washer
R	8	M8 Hex Nut	S	6	M8x30 mm Allen head bolt
T	8	M4x16mm Phillips Screw	U	6	M8 Plastic Washer

<b>Hardware for JK skid plate</b>					
V	2	Z Bracket	W	2	Square Washer



## INSTALLATION FOR JEEP JK

### Removing Factory Bumper



#### Step 1.

Working under the Jeep (You may want to put the vehicle on a ramp) locate and 4 plastic fasteners along the bottom front edge.

These are plastic Philips head screw rivets however you cannot unscrew them because they will spin. Use a fastener pry tool to remove them. Set fasteners aside for later use.



#### Step 2.

Reach up behind the splash shield and using a fastener pry tool or flat screwdriver remove 2 plastic fasteners. Remove splash guard. Set aside in secure location for later use.



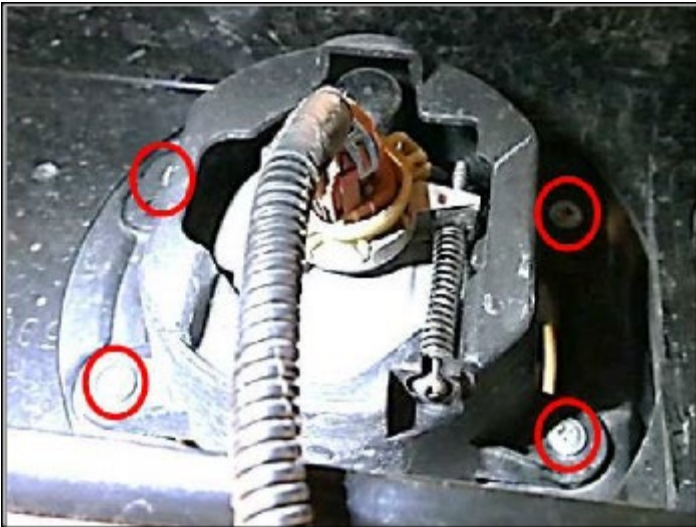
#### Step 3.

Using an 18mm socket, remove the 4 factory mounting nuts (2 on each side of the frame) located next to the outside of your JK's frame rails. Remove the backing plate and set aside all hardware. Repeat process for the other side of the Jeep.

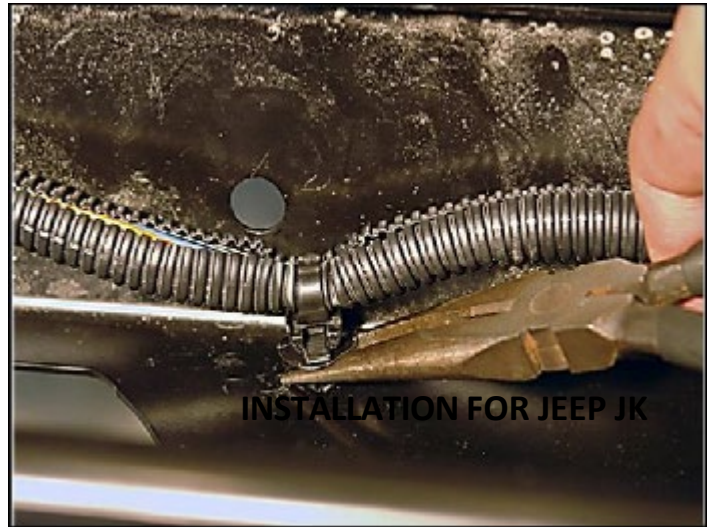


## INSTALLATION FOR JEEP JK

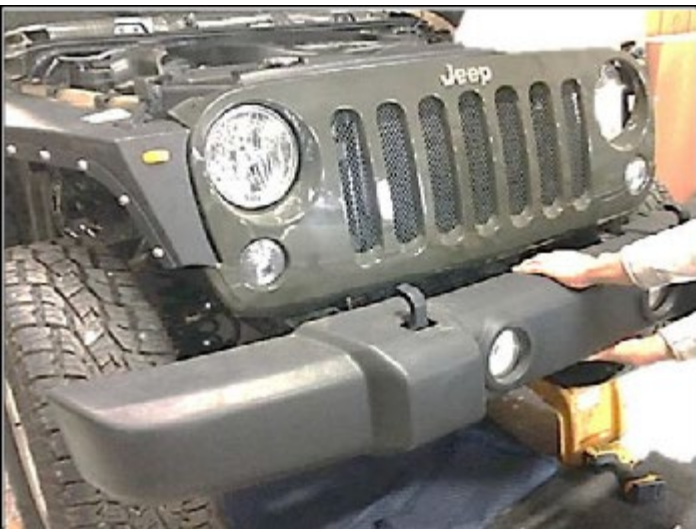
### Removing Factory Bumper continued



Step 4.  
Fog light removal (if your JK has factory fog lights). Working underneath the Jeep locate the wiring harness plug, lift the locking clip and unplug the harness. Repeat process for other side. Using a #2 Philips head screwdriver locate and remove 4 Philips head bolts holding factory fog light onto bumper. Remove fog light from bumper. Set fog light aside for later use. Discard hardware.



Step 5.  
Using a fastener pry tool remove the wiring harness connector attached to the back of the bumper.



Step 6.  
Firmly pull the front bumper off the frame rails and set it aside in a protected area.



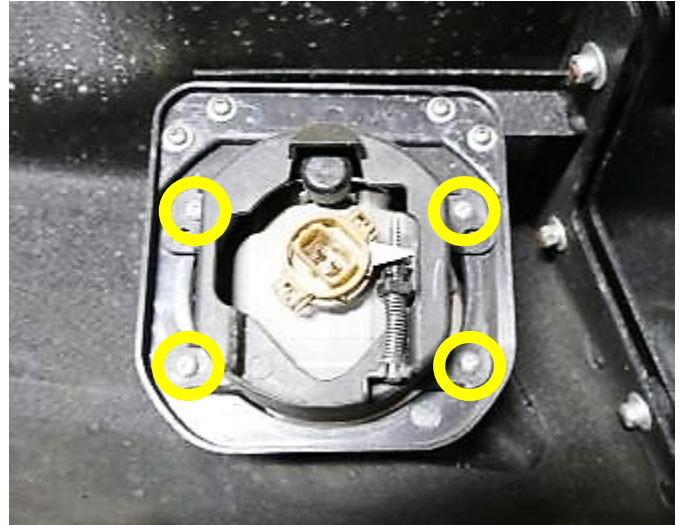
Step 7.  
Remove 2 plastic rivets using a pry tool or flat screw driver. Lift off the plastic cover and set it aside along with the rivets.

## INSTALLATION FOR JEEP JK

### Installing Factory Fog Lights in Guardian Bumper



**Step 1.**  
Place the new Guardian bumper placed face down on a padded work bench to protect the finish, Carefully position the factory fog lights in the bumper light bracket and line up the holes in the factory fog lights with the holes in the bumper bracket.



**Step 2.**  
Using an electric screw gun with a #2 tip install supplied Philips head screws M4x0.7x16mm through the fog light holes and into the holes on the bumper light bracket. Do Not over tighten screws.

### Installing Winch Cradle



**Step 1.**  
Place supplied Winch cradle (E) onto vehicle frame horn. Line up the holes in the winch cradle with the holes in the vehicle frame horns. Install one M12 x 55mm bolt in top right and top left holes of the winch cradle and through the hole in the frame horn.



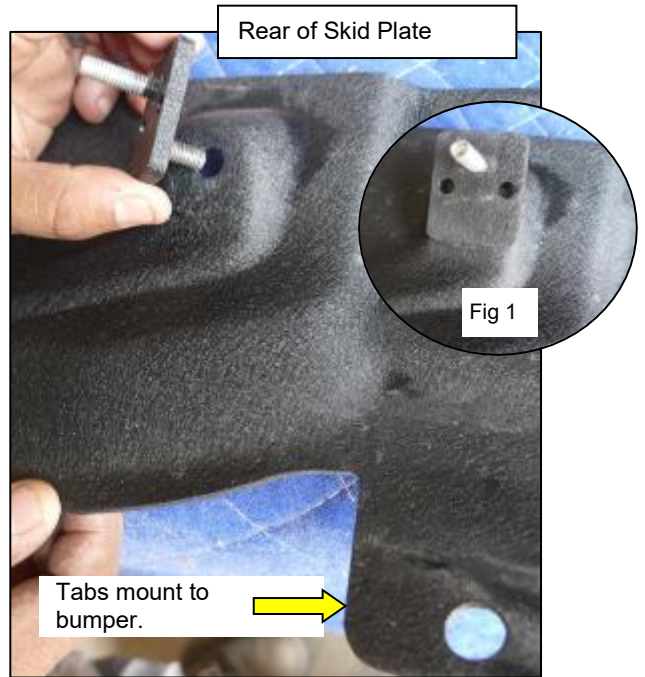
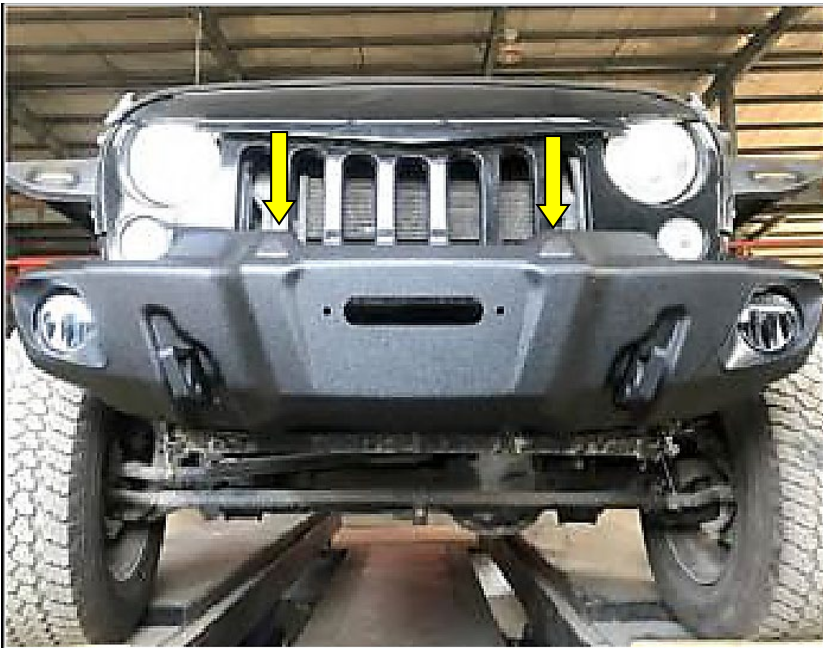
**Step 2.**  
Place supplied M12 flat washer and M12 split washer onto bolts. Start a supplied M12 hex nut onto bolts. Finger tighten. Proceed to install the rest of the bolt's washers and nuts. Once all the bolts are installed tighten down using 18mm socket.

## INSTALLATION FOR JEEP JK

### Installing Guardian Bumper

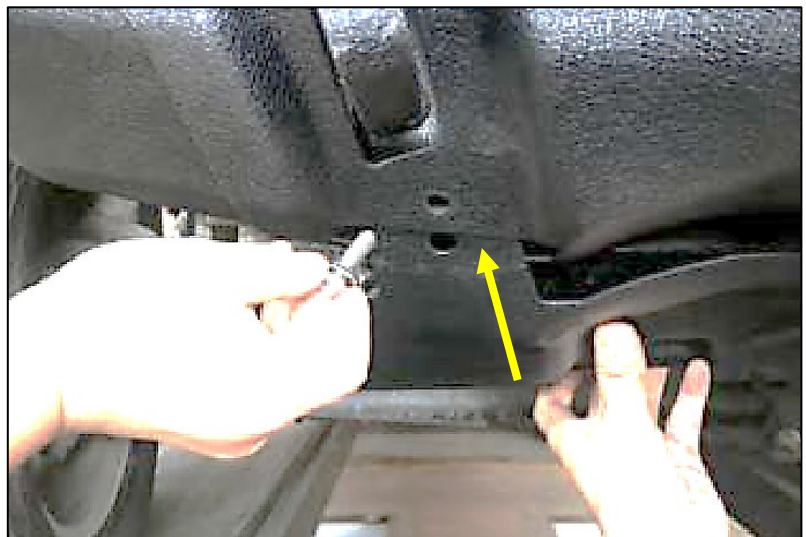


Note: If you plan to install a winch do it now. Once bumper is installed it will be more difficult to access mount points for the winch installation.



**Step 1.**  
Position Guarding bumper (A) onto installed winch cradle. Line up the holes in the top of the bumper with the slots in the winch cradle.

**Step 2.**  
Locate supplied skid plate (C) and Z bracket (V). Working from the back side of the skid plate install the short stud on the z bracket through the hole in the skid plate. The long stud should be towards the rear of the skid plate as shown in Fig 1 above.



**Step 3.**  
Flip the skid plate over and secure the Z bracket to the skid plate with supplied M8 large washer, M8 split washer and M8 hex nut. Repeat steps for the other Z bracket.

**Step 4.**  
Proceed to the lower Front part of the bumper. Carefully pull back the bumper and Insert the skid plate tab between the bumper and winch cradle. Line up holes on bumper, skid plate and winch cradle. Slide supplied large washer and a plastic washer onto a supplied M8 x 30mm Allen head bolt then push the bolt through the hole in the bumper, skid plate and winch cradle. Repeat for the other side.

## INSTALLATION FOR JEEP JK

### Installing Guardian Bumper continued



#### Step 5.

While holding the bolt in position proceed to the inside of the bumper from underneath the vehicle. (Note: You may need an assistant to support the winch plate and hold the mounting bolts). Working inside the bumper install an M8 flat washer and M8 split washer on the Allen head bolt Start an M8 hex nut on the bolt. Finger tighten. Repeat step for other side. Tighten hardware Once both sides are complete



#### Step 6

Locate supplied square washers (T). Reach down through the bumper (If you installed a winch you may need to crawl under the Jeep) and place the square washer onto factory OEM frame rail with the stud on the Z bracket coming through the hole in the square washer.



#### Step 7.

Slide M8 flat washer and M8 split washer onto the stud. Start M8 hex nut on the stud. Finger tighten. Repeat for the other side. Once both sides are finished proceed to tighten hex nuts.



#### Step 8.

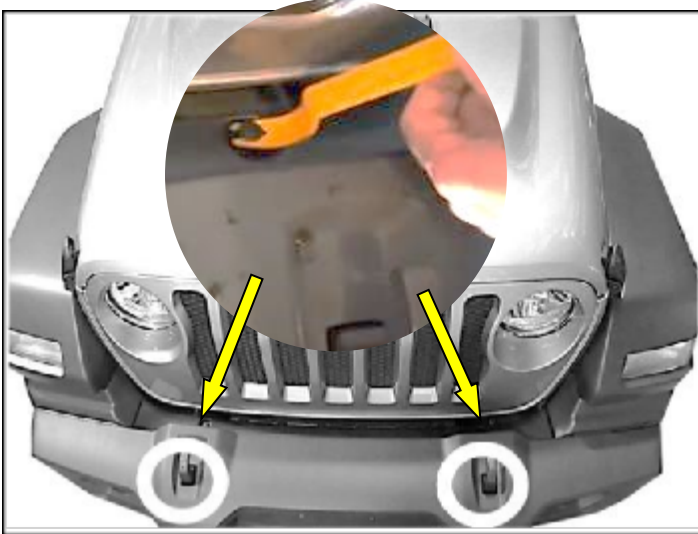
Locate supplied hoop (B) and place it onto bumper. Line up the holes in the hoop with the holes in the bumper. Locate an M8x30mm Allen head bolt. Slide a plastic washer and large washer on the bolt. Push bolt through the holes in the hoop through the holes in the bumper and through the slots in the winch plate. Slide a supplied flat washer and split washer on the bolt. Start a hex nut on the bolt end. Repeat step for other side. Once both sides are complete tighten hardware.

Step 10. Finish the installation by installing factory wiring harness on inside of factory frame rail and securing with zip ties (not supplied). Connect the power plugs to both factory fog lights. JK installation is complete.

## INSTALLATION FOR JEEP JL AND JT

### Removing Factory Bumper

**NOTE:** There are 3 different bumper options and fog lights available for the JL and JT. The basic removal process is the same across all the models however some details are specific to each model. This installation features the JL Sahara. Your model may vary.



Step 1.  
Using a plastic clip pry bar or flat head screwdriver locate and remove two factory plastic rivets. (Directly behind the tow hooks). Discard factory rivets.



Step 2.  
Working under the Jeep locate and 8 plastic fasteners along the bottom front edge. Use a fastener pry tool to remove them. Set fasteners aside in a protected area.



Step 3.  
Using a 8mm socket locate and remove 2 factory bolts holding the factory splash guard onto the bumper. Remove and discard factory splash guard and hardware

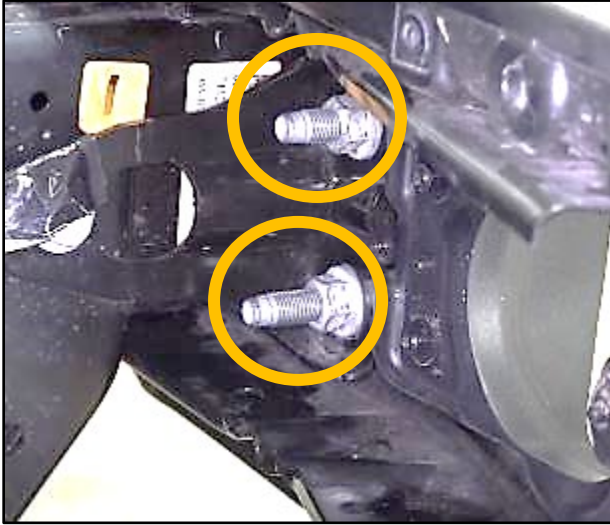


Step 4.  
Once splash guard is removed the factory cross member bracket is revealed. Using a 16 mm socket locate and remove 2 factory bolts holding the factory bracket. Remove and discard factory bracket. Set aside the bolts to use later when installing supplied frame rail (page 11).

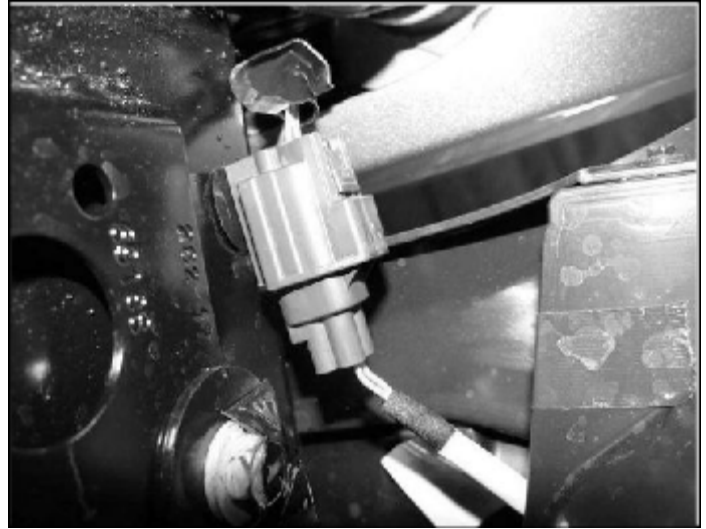


## INSTALLATION FOR JEEP JL AND JT

### Removing Factory Bumper continued



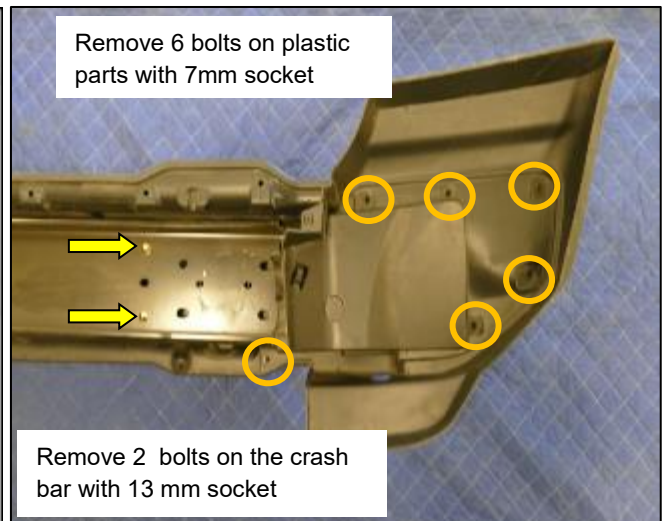
Step 5.  
Behind the bumper locate and remove the 4 factory mounting nuts using an 18mm deep socket. (2 on each side of the frame horn) Set aside factory brackets. Discard hardware. Repeat process for the other side of the Jeep.



Step 6.  
Proceed to the passenger side of the vehicle. Working behind the bumper locate and disconnect factory fog light harness connector.



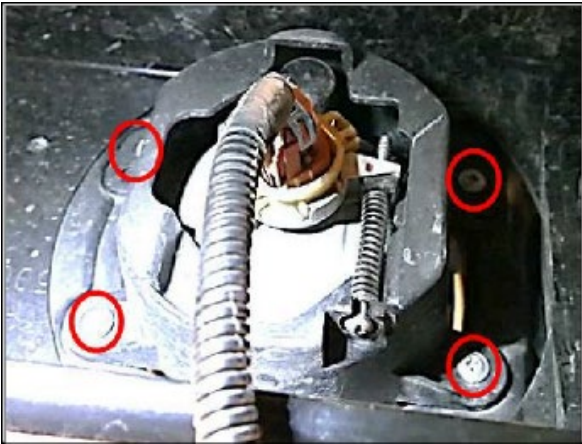
Step 7.  
With help from an assistant firmly pull the front bumper off the frame rails.



Step 8.  
Place factory bumper face down on a padded work bench. To reveal factory fog lights, remove plastic cover and metal crash bar as shown above. Discard hardware and plastic parts. Repeat for other side. Again, various bumper versions are available. Your bumper may differ.

## INSTALLATION FOR JEEP JL AND JT

### Removing Factory Fog Lights



Step 9.  
With plastic cover and metal structure removed locate and remove 4 factory mounting bolts to remove fog lights. Repeat for the others side. Unplug lights and set them aside for later use.



Step 10.  
Using a fastener pry tool remove the wiring harness attached to the back of the bumper. Set harness aside for later use.

### JL Fog Light Adapter Bracket



If your factory bumper is equipped with Incandescent bulb fog lamps with 3 mounting holes as shown above.

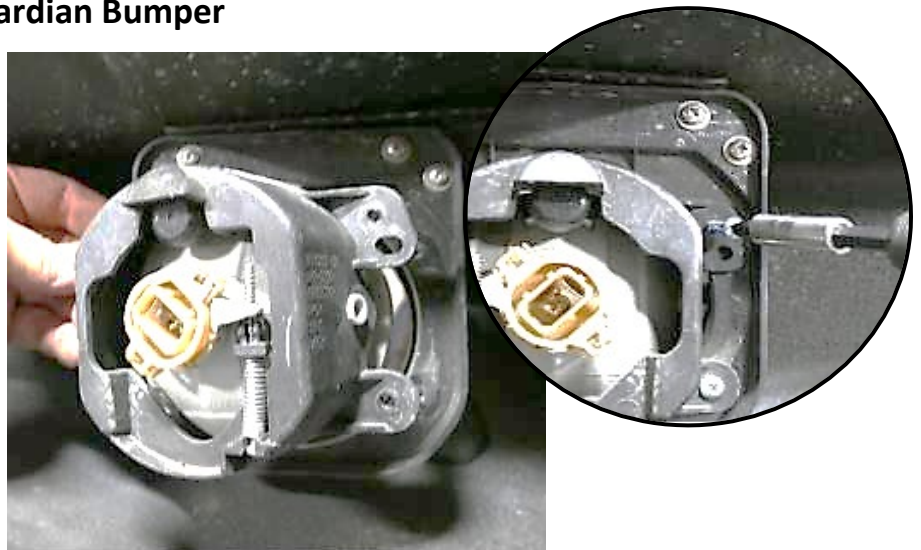


Unclip the factory lamp from the factory housing and install the lamps in the supplied Fog Light adapter brackets (F).

### Installing Factory Fog Lights in Guardian Bumper

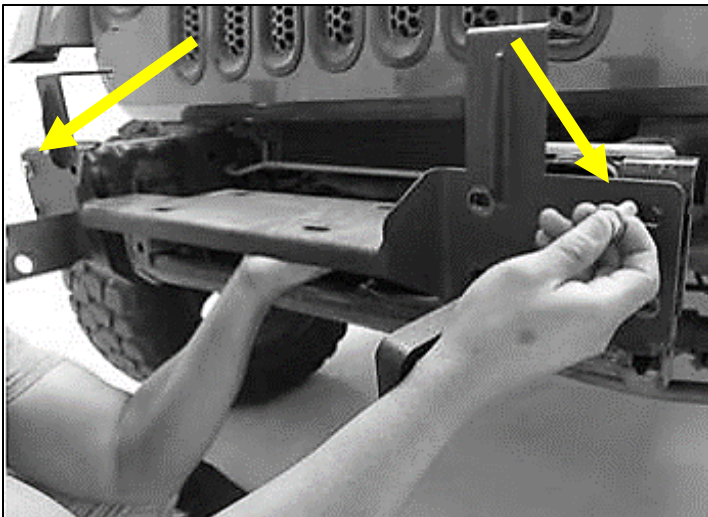
Step 1.  
Place the new Guardian bumper placed face down on a padded work bench. Carefully position the factory fog lights in the bumper light bracket and line up the holes in the factory fog lights with the holes in the bumper bracket.

Step 2.  
Using an electric screw gun with a #2 tip install supplied Philips head screws M4x0.7x16mm through the fog light holes and into the holes on the bumper light bracket. Do Not over tighten screws.



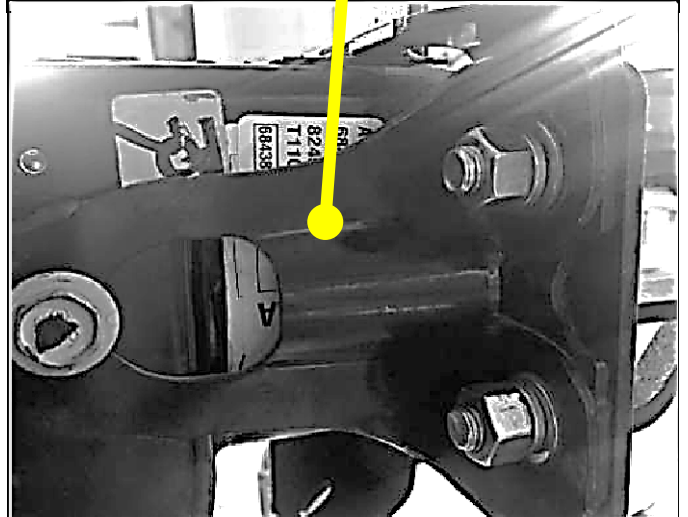
## INSTALLATION FOR JEEP JL AND JT

### Installing Winch Cradle



**Step 1.**  
Place supplied Winch cradle (E) onto vehicle frame horn. Line up the holes in the winch cradle with the holes in the vehicle frame horns. Push one M12 x 55mm bolt through top right and top left holes of the winch cradle and through the hole in the frame horn. Make sure to install the factory support brackets removed in step 5.

**NOTE:** Reinstall factory support bracket on both sides of the frame horn.



**Step 2.**  
Slide supplied M12 flat washer and M12 split washer onto bolts. Start a supplied M12 hex nut onto bolts. Finger tighten. Proceed to install the rest of the bolt's washers and nuts. Once all the bolts are installed tighten down using 18mm socket. Repeat for the other side of vehicle.

### Installing Frame Rail



**Step 1.**  
Place supplied frame rail bracket (D) onto vehicle as shown. Line up the holes in the frame rail with the threaded holes in the vehicle. Re-install hardware removed in page 8 step 4 using M16 socket.

## INSTALLATION FOR JEEP JL AND JT

### Installing Guardian Bumper continued



Note: If you plan to install a winch do it now. Once bumper is installed it will be more difficult to access mount points for the winch installation.



**Step 1.**  
Position Guarding bumper (A) onto installed winch cradle. Line up the holes in the top of the bumper with the slots in the winch cradle.

**Step 2.**  
Locate supplied Skid plate (C). Proceed to the lower Front part of the bumper. Carefully pull back the bumper and Insert the skid plate tab between the bumper and winch cradle. Line up holes on bumper, skid plate and winch cradle. Slide supplied large washer and a plastic washer onto a supplied M8 x 30mm Allen head bolt then push the bolt through the hole in the bumper, skid plate and winch cradle. Repeat for the other side.



**Step 3.**  
While holding the skid plate and bolt in position proceed to the inside of the bumper from underneath the vehicle. (Depending on your experience level you may need an assistant to support the winch plate and hold bolts). Working inside the bumper slide an M8 flat washer and M8 split washer onto the Allen head bolt. Start an M8 hex nut on the bolt. Finger tighten. Repeat step for other side. Once both are complete tighten hex nuts.

## INSTALLATION FOR JEEP JL AND JT

### Installing Guardian Bumper continued.



**Step 4.**  
Locate a supplied M10x30mm Allen head bolt. Slide a supplied M10 split washer and supplied M10 flat washer onto bolt. Proceed to the rear of the skid plate. Push the Allen head bolt through the hole in the skid plate and through the hole in the frame rail bracket (installed on page 11.)



**Step 5.**  
While holding the skid plate and bolt in position reach inside the skid plate and slide an M10 large washer onto the Allen head bolt. Start a supplied M10 hex nut on the bolt. Finger tighten. Repeat steps 4 and 5 for the other side. Once all hardware is installed tighten hex nut.



**Step 6.**  
Locate supplied hoop (B) and place it onto bumper. Line up the holes in the hoop with the holes in the bumper. Locate an M8x30mm Allen head bolt. Slide a plastic washer and large washer on the bolt. Push bolt through the holes in the hoop through the holes in the bumper and through the slots in the winch plate. Slide a supplied flat washer and split washer on the bolt. Start a hex nut on the bolt end. Repeat step for other side. Once both sides are complete, tighten hardware.

**Step 7.** Finish the installation by installing factory wiring harness on inside of frame rail and securing with zip ties (not supplied). Connect the power plugs to both factory fog lights. JL or JT installation is complete.

## PRODUCT CARE

1. Periodically check the product to ensure all fasteners are tight and components are intact.
2. Regular washing and waxing is recommended to protect the finish of the product.
3. Routinely check lighting installed in the product to ensure these components are correctly oriented and functioning properly.

## CHECK OUT THESE OTHER QUALITY PRODUCTS FROM PARAMOUNT AUTOMOTIVE



Red D-Ring 51-0526  
(4.75 Ton, Pair) With Isolator



Black D-Ring 51-0532  
(4.75 Ton, Pair) With Isolator



Aluminum fairlead: 81-10100:  
07-21 Jeep Front Bumper

## WARRANTY



For more information please visit our website. [www.paramount-automotive.com](http://www.paramount-automotive.com)