

THE INFORMATION CONTAINED IN THIS DRAWING IS THE SOLE PROPERTY OF SYNERGY MFG. ANY REPRODUCTION IN PART OR WHOLE WITHOUT THE WRITTEN PERMISSION OF SYNERGY MFG IS PROHIBITED.

Revisions			
Rev.	Description	Date	Approved
A	Initial Release Per ECO 20-108	12/7/2020	KB



## Front Track Bar Bracket

### Installation Instructions

Applications:  
 2018+ Jeep JL Wrangler  
 2020+ Jeep JT Gladiator



TITLE:  
**FRONT TRACK BAR BRACKET  
 INSTALLATION INSTRUCTIONS**

SIZE	DWG NO:	REV
<b>A</b>	<b>8855-01-INST</b>	<b>A</b>
SCALE: N/A		PAGE 1 OF 8



## FRONT TRACK BAR BRACKET INSTALLATION INSTRUCTIONS

Thank you for purchasing the best aftermarket products available for your vehicle. We strongly feel that the parts you are about to install should meet or exceed your expectations for performance. Proper assembly is critical to the performance of these components and the vehicle as a whole. Please take the time to carefully read these instructions and familiarize yourself with the installation procedure before working on your vehicle. If you have any questions PLEASE contact Synergy Manufacturing BEFORE beginning installation. Thanks again for supporting Synergy – enjoy the performance benefits of the best aftermarket products available for your vehicle!

**Synergy Manufacturing**  
**Phone: (805) 242-0397**  
**Email: support@synergymfg.com**

Modifying or otherwise altering vehicle components may cause the vehicle to handle differently than originally designed. It is the driver's responsibility to familiarize themselves with the performance and handling characteristics of the modified vehicle. Vehicles with larger diameter than stock tires must be driven carefully and cannot be expected to perform as stock or meet OEM performance with regard to handling, braking, or crash performance. Ensure all replacement components are compatible with vehicle capacities so as not to overload components, especially tires. It is up to the individual to ensure that the vehicle and all components are compatible with the intended vehicle use, including load ratings, road conditions, and driver abilities. Thorough and frequent vehicle inspections are recommended to ensure a safe and reliable state of readiness, especially after off-highway use.

### PARTS LIST

#### 8855-01 Part Title

QTY	Part Number	Description
1	885501-PC	JL FRONT TRACK BAR BRACKET, POWDER COATED
1	885502-01-PC	JL FRONT SWAY BAR LINK RELOCATION TAB, POWDER COATED
1	885503-PL	JL FRONT TRACK BAR BRACKET, NUT TAB, PLATED
1	805504-PL	FRONT TRACK BAR SPACER, 1.4" LONG, PLATED
1	NA	M14-2.00 X 80MM HEX HEAD BOLT, CLASS 10.9, ZINC PLATED
1	NA	M14-2.00 X 70MM HEX HEAD BOLT, CLASS 10.9, ZINC PLATED
2	NA	M12-1.75 X 40MM HEX HEAD BOLT, CLASS 10.9, ZINC PLATED
2	NA	M14-2.00 TOP LOCK NUT, CLASS 10.9, ZINC PLATED
2	NA	M12-1.75 TOP LOCK NUT, CLASS 10.9, ZINC PLATED
4	NA	M14 FLAT WASHER, CLASS 10.9, ZINC PLATED
4	NA	M12 FLAT WASHER, CLASS 10.9, ZINC PLATED
1	NA	1/2-20 X 3.0", HEX HEAD BOLT, GRADE 8, ZINC PLATED
1	NA	1/2" FLAT SAE WASHER, GRADE 8, ZINC PLATED

## **GENERAL NOTES**

- These instructions are also available on our website; [www.synergymfg.com](http://www.synergymfg.com). Check the website before you begin for any updated instructions and additional photos for your reference.
- To avoid bump steer, this bracket **MUST** be used with the 8800-01 draglink in the flipped position, or a knuckle that flips the drag link to the top like the Reid JL001L-F/JL001R-F.
- You must use a minimum of 3" of front bump stop extension (PN:8057-10) to prevent the track bar and bracket from hitting the bottom of the frame at full jounce travel.
- This bracket must be used with some form of sway bar disconnects and is designed to work with the 8859-01 Front Sway Bar Links with Quick Disconnects. Suspension systems designed to work with the steering correction kit will allow enough suspension travel to overwhelm the stock Rubicon electronic sway bar system and cause sway bar link or mount failure.
- This bracket can also be used with the 8807-03 or 8807-04 Synergy Steering Stabilizer Relocation kits by substituting the lower through bolt for the stud in the relocation kits.

## **TOOLS REQUIRED**

- 18mm, 21mm, 22mm Sockets and Wrenches
- 3/4" Sockets and Wrenches
- Prybar
- Torque Wrench

## **ESTIMATED INSTALLATION TIME**

**1.5 Hours**

## **INSTALLATION**

1. Installation can be done on the ground or in the air on a lift. Pulling the wheels and tires off will allow you more room to work, but isn't required for installation. Disconnect the sway bar links from the axle mounts on each side of the axle and rotate the sway bar and end links up out of the way.
2. Remove the steering stabilizer followed by the front axle track bar bolt and pull the track bar up out of the bracket. Support the passenger side of the track bar by tying up the end so it does not fall down in your way while working on the axle. See **Figure 1**.



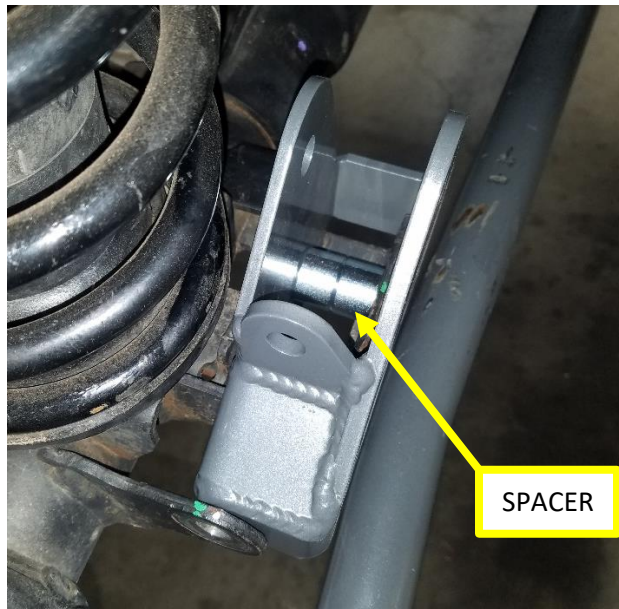
### Figure 1. Draglink End Supported

- Place the Synergy Front Track Bar Bracket over the factory track bar mount on the front axle of the Jeep. The Synergy bracket should overlap the front of the factory mount and fit in between the sway bar mounting tabs. See **Figure 2**.



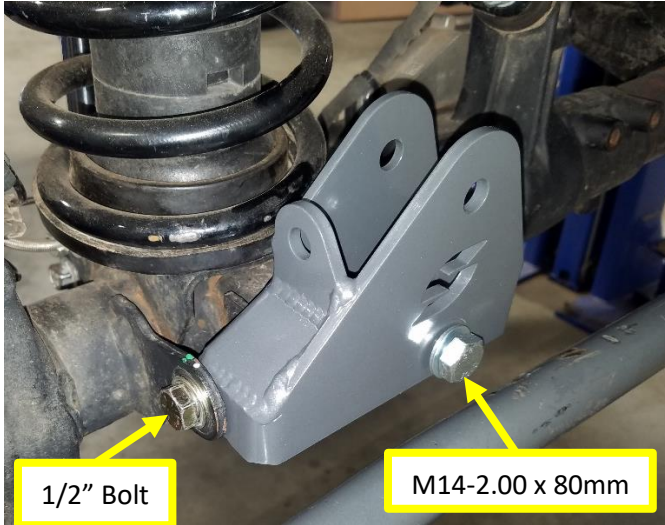
**Figure 2. Synergy Bracket Loosely Installed**

- Insert the 805504-PL 1.4" long spacer inside the Synergy bracket and factory track bar mount where the factory track bar bolt goes. Install the M14-2.00 x 80mm long bolt with a washer on it in the lower hole of the Synergy bracket and through the factory track bar bolt holes. The bolt should pass through the Synergy bracket, factory mount, spacer, Synergy mount, and exit the back of the factory mount. Use another washer and an M14-2.00 top lock nut to keep the bolt from falling out. Do not tighten yet. See **Figure 3**.

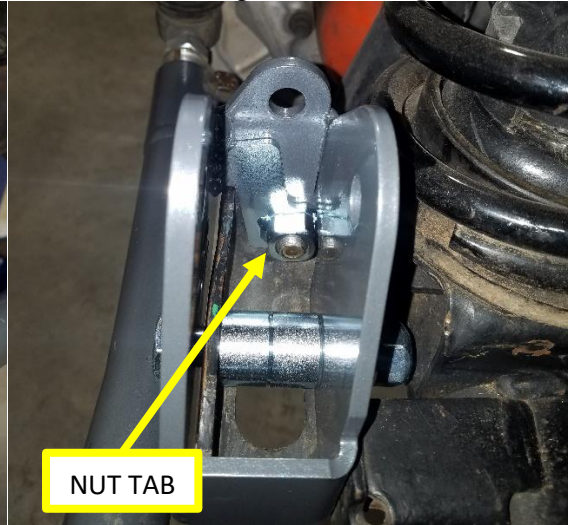


### Figure 3. Spacer Installed Inside Bracket

5. Install the 1/2-13 x 3.0" long bolt and washer through the sway bar mounting holes in the side of the bracket. Use the included nut tab on the inside of the bracket and hand tighten. See **Figure 4 and 5**.

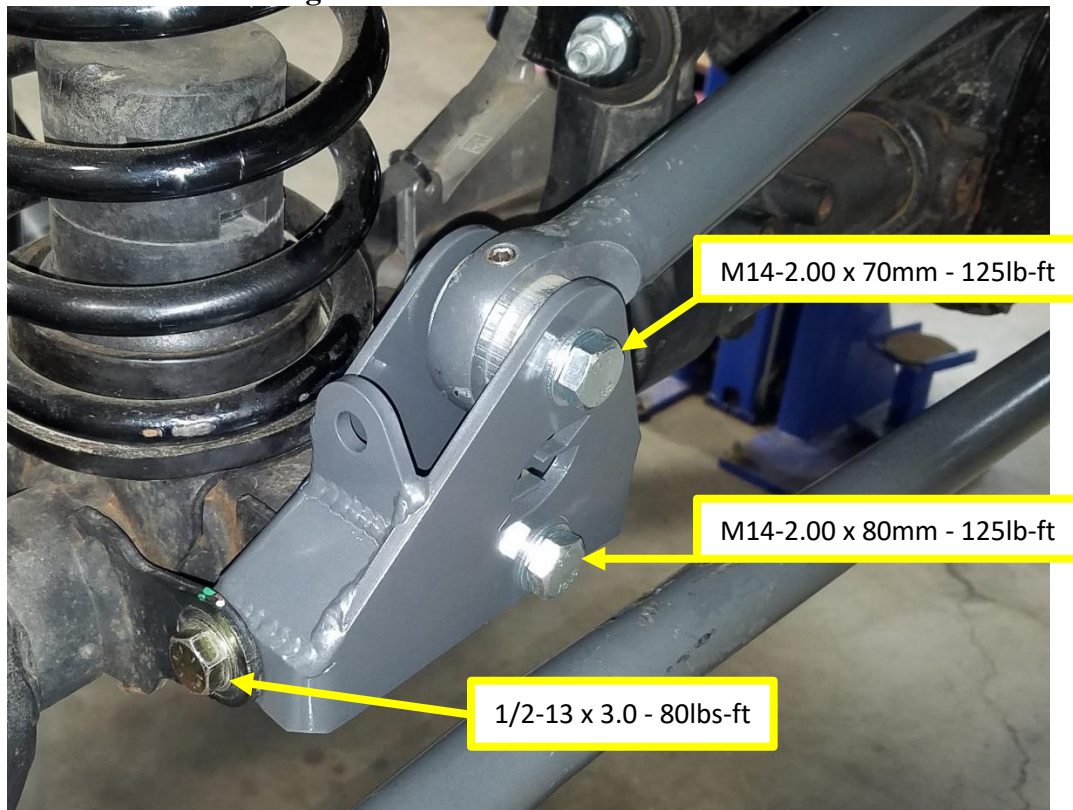


**Figure 4. 1/2" Bolt Through Side**



**Figure 5. Nut Tab on Inside of Bracket**

6. Drop the track bar down into the Synergy bracket and use the M14-2.00 x 70mm, remaining 14mm washers, and an M14-2.00 top lock nut to hold the track bar in place. You may have to lower the axle relative to the chassis or adjust the length of the track bar if you have an adjustable track bar in order to get the bolt hole and track bar to line up properly. See **Figure 6**.
7. Torque all the bolts in the bracket to specification. Torque both M14-2.00 bolts to 125lb-ft, and torque the 1/2"-13 bolt to 80lb-ft. See **Figure 6**.



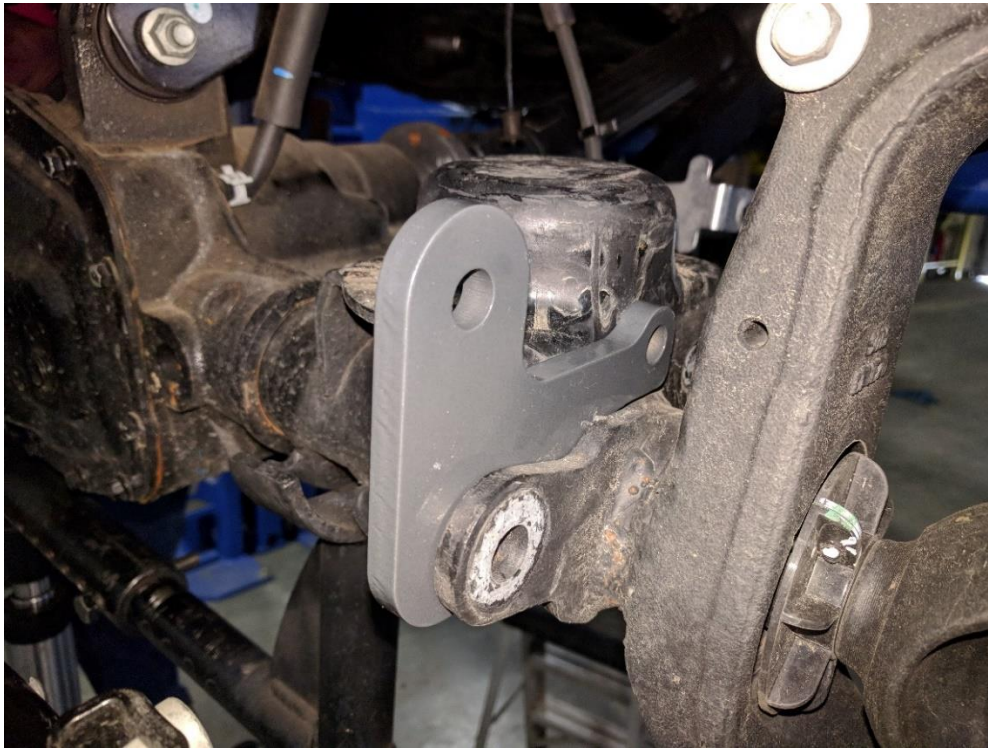
**Figure 6. Track Bar Installed into Bracket**

8. Install the 885502-01-PC Synergy Sway Bar Relocation Bracket on the driver's side of the front axle. Installation is best done with the driver's side spring removed, but may be done with it in place. These instructions assume the bracket is being used with Synergy springs. If using with a stock lower spring isolator, the isolator must be trimmed as shown in **Figures 7 and 8**.



**Figures 7 and 8. Trimming Stock Lower Spring Isolator**

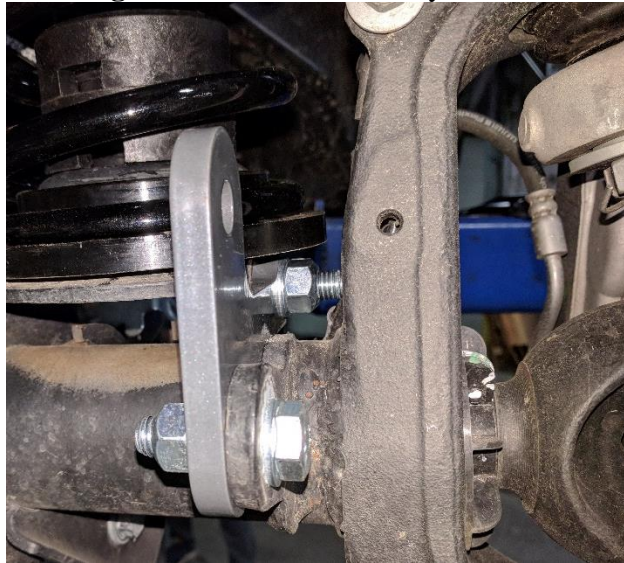
9. The Synergy sway bar relocation bracket has a radius to accommodate the axle tube. Insert the relocation bracket between stock axle side sway bar link bracket and the coil spring mount on the driver's side. It may be necessary to tap the bracket into place using a soft face hammer. See **Figure 9**.



**Figure 9. Sway Bar Bracket Orientation**

10. Align the inner Synergy sway bar link relocation bracket hole with the hole in the lower spring perch. Loosely install an M12 bolt through the spring perch and the Synergy sway bar link relocation bracket. Use a washer under the head of the bolt and under the nut. Install the hardware with the bolt head facing 'in', towards the center of the vehicle.
11. It may be necessary to use a soft face mallet (or a block of wood with a metal hammer) in order to get the stock sway bar mount hole to line up. Once the forward hole is aligned, loosely install an M12 bolt through the stock sway bar mount and the Synergy sway bar link relocation bracket.

12. Use a washer under the head of the bolt and under the nut. Install the M12 bolt with the bolt head facing 'out' towards the wheel. **Figure 10** shows a correctly installed bracket.



**Figure 10. Correctly Installed Bracket**

13. With all 4 pieces of hardware installed, torque the M12 bolts and nuts to 70lb-ft.
14. Re-install sway bar end link with factory hardware in the upper hole in the Synergy sway bar relocation bracket. The bushing end of the link attaches to the axle, on the inside of the tab (towards the center of the vehicle). **Figure 11** shows a correctly installed link on the driver side of the vehicle. If using the factory nut and bolt, torque the nut and bolt to 59lb-ft. If using the Synergy 8859-01 disconnect pin, torque the pin nut to 80lb-ft.



**Figures 11. Correctly Installed Driver's Side Sway Bar Link**

15. Install the passenger side sway bar end link onto the upper hole in the side of the Synergy front track bar bracket. If using the factory nut and bolt, torque the nut and bolt to 59lb-ft. If using the Synergy disconnect pin, torque the pin nut to 80lb-ft. See **Figure 12**.



**Figure 12. Sway Bar Link Installed on Bracket**

16. Installation is now complete. Check bolt torques after approximately 100 miles.

**Table 1. Vehicle Bolt Torques**

<b>Bolted Joint Location</b>	<b>Wrench Size</b>	<b>Torque</b>
Lug Nuts	21mm (OEM)	125lb-ft
M14-2.00 bolts, all	22mm	125lb-ft
1/2-13 x 3.0" bolt	3/4"	80lb-ft
Sway Bar End Link Bolts to Axle	18mm (OEM)	59lb-ft
Synergy Sway Bar Disconnect Studs	3/4"	80lb-ft