

THE INFORMATION CONTAINED IN THIS DRAWING IS THE SOLE PROPERTY OF SYNERGY MFG. ANY REPRODUCTION IN PART OR WHOLE WITHOUT THE WRITTEN PERMISSION OF SYNERGY MFG IS PROHIBITED.

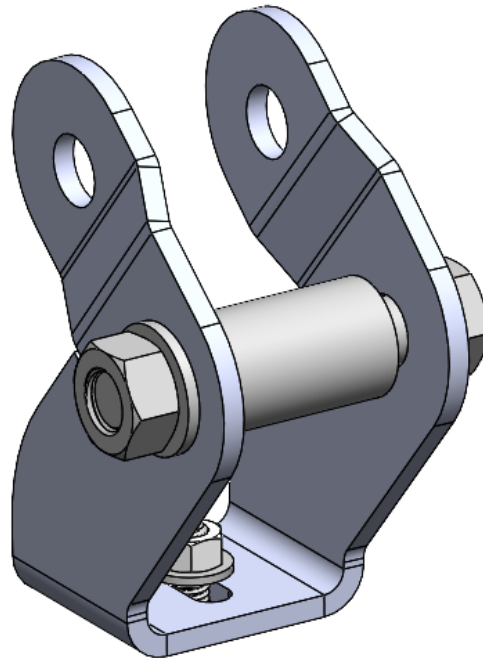
Revisions			
Rev.	Description	Date	Approved
-	Initial Release Per ECO 21-060	10/14/2021	M.B.



## JEEP JT REAR SHOCK RELOCATION BRACKET

Installation Instructions

Applications:  
JEEP GLADIATOR (JT)



TITLE:  
**JEEP JT REAR SHOCK RELOCATION  
BRACKET**

SIZE	DWG NO:	REV
<b>A</b>	<b>8876-01-INST</b>	<b>-</b>
SCALE: N/A		PAGE 1 OF 5



## JEEP JT REAR SHOCK RELOCATION BRACKET INSTALLATION INSTRUCTIONS

Thank you for purchasing the best aftermarket products available for your vehicle. We strongly feel that the parts you are about to install should meet or exceed your expectations for performance. Proper assembly is critical to the performance of these components and the vehicle as a whole. Please take the time to carefully read these instructions and familiarize yourself with the installation procedure before working on your vehicle. If you have any questions PLEASE contact Synergy Manufacturing BEFORE beginning installation. Thanks again for supporting Synergy – enjoy the performance benefits of the best aftermarket products available for your vehicle!

**Synergy Manufacturing**  
**Phone: (805) 242-0397**  
**Email: support@synergymfg.com**

Modifying or otherwise altering vehicle components may cause the vehicle to handle differently than originally designed. It is the driver's responsibility to familiarize themselves with the performance and handling characteristics of the modified vehicle. Vehicles with larger diameter than stock tires must be driven carefully and cannot be expected to perform as stock or meet OEM performance with regard to handling, braking or crash performance. Ensure all replacement components are compatible with vehicle capacities so as not to overload components, especially tires. It is up to the individual to ensure that the vehicle and all components are compatible with the intended vehicle use, including load ratings, road conditions, and driver abilities. Thorough and frequent vehicle inspections are recommended to ensure a safe and reliable state of readiness, especially after off-highway use.

### PARTS LIST

<b>8876-01 JT REAR SHOCK RELOCATION</b>		
<b>QTY</b>	<b>Part Number</b>	<b>Description</b>
2	887601-01-PC	JT REAR SHOCK RELOCATION BRACKET
2	887601-02-PL	REAR SHOCK SPACER
4	N/A	M14 WASHER
2	N/A	M14 -1.50 X 75mm HEX HEAD BOLT
2	N/A	M14 -1.50 HEX NUT
4	N/A	5/16 WASHER
2	N/A	5/16-18 X 0.75" HEX HEAD BOLT
2	N/A	5/16-18 HEX NUT



## **GENERAL NOTES**

- These instructions are also available on our website; [www.synergymfg.com](http://www.synergymfg.com). Check the website before you begin for any updated instructions and additional photos or videos for reference.
- Minimum of 2" of bump stop spacing is required if using factory length shocks. It is the customers responsibility to determine shock fitment for aftermarket shocks.
- Intended for use with 2" JT lift in rear retaining factory length shocks.

## **TOOLS REQUIRED**

- 5/16 Drill bit and Drill
- Sockets: 1/2", 21mm, 22mm
- Wrenches: 1/2", 21mm, 22mm
- Optional: Floor Jack and Jack Stands

## **ESTIMATED INSTALLATION TIME**

**30 Minutes**

## **PRE-INSTALLATION CHECKLIST**

- Inspect the stock rear shock brackets for damage or faulty welds.
- Inspect the rear shocks for wear and damage and replace as necessary.
- Inspect the rear shock hardware for damage and replace as necessary.

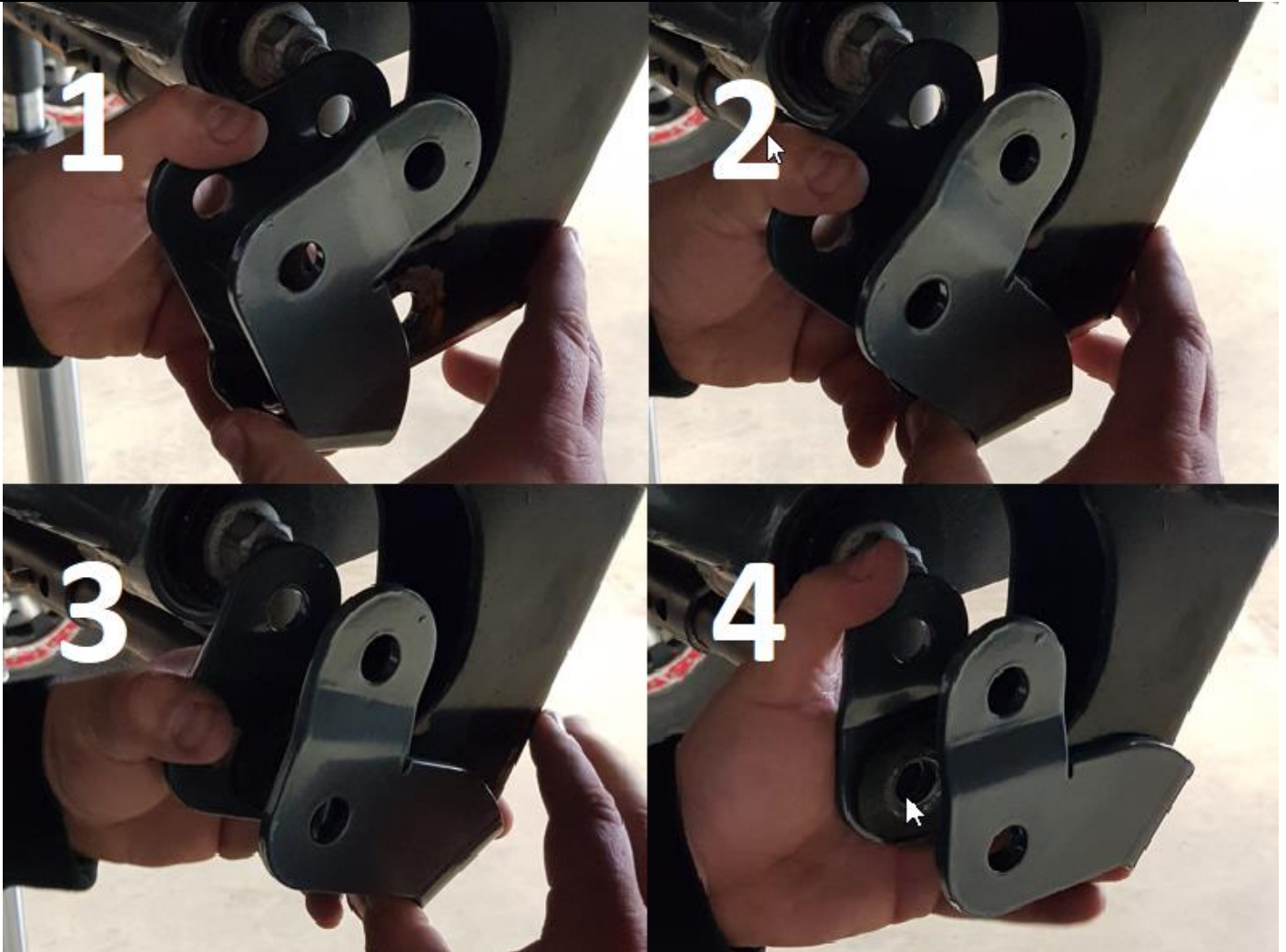
## **INSTALLATION**

1. Park the vehicle on a flat, level surface, or safely raise the vehicle on a lift. Chock the rear wheels, make sure the vehicle is in park or in gear, and set the parking brake.
2. Unbolt the lower eyelet of the rear shocks and pull the shocks out of the way. The upper bolt may be loosened to ease the removal process. The factory supplied shocks are nitrogen charged and will begin to extend, be careful not to get pinched.



**Figure 1. Hole drilled for rear shock relocation.**

3. Drill a hole centered on the back of the factory rear shock bracket 1 inch from the bottom. To aid in measuring the relocation bracket can be temporarily installed and used as a guide to mark the location of the hole. If the relocation bracket is used as a guide; it is recommended that the bracket is removed before drilling so as not to damage the powder coat. See **Figure 1**.
4. Install the bracket by sliding it down and rotating back until the lower bolt holes on the relocation bracket align with the bolt holes on the factory shock bracket. See **Figure 2**.



**Figure 2. Relocation bracket sliding onto the shock mount.**

5. Loosely attach the 5/16" bolt, washer and nut to the back of the relocation bracket through the hole drilled in step 3.
6. Install the rear shock spacer and M14X75mm bolt in the lower hole in the shock relocation bracket. Loosely install the M14 nut See **Figure 3**.



**Figure 3. Bracket and spacer installed**

7. Torque the 5/16" bolt to 20 ft lbs. then torque the M14 nut to 89 ft lbs.
8. Install the lower eyelet, the shocks are gas pressurized and may be difficult to compress. Use caution to not get pinched. Compress the shock until the eyelet of the shock is aligned with the upper hole of the relocation bracket. If using a hoist or jacks, lift the frame of the vehicle until the eyelet of the shock aligns with the upper hole of the relocation bracket. Install the factory shock bolt through the upper hole of the relocation bracket and the eyelet of the shock.
9. Install the factory nut on the lower shock bolt and tighten to 89 ft lbs.
10. Torque the upper shock bolt to 89 ft lbs.

**INSTALLATION IS COMPLETE**