

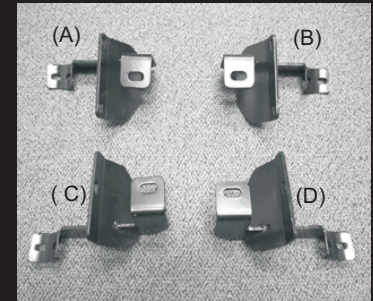


Installation Instructions

PART#:8627/8827/9427
SIDE BARS - 3" ROUND
2007- 14 JEEP WRANGLER 2 DOOR

Parts List

- | | |
|---|----------------------------|
| (1) Driver Side Bar | (4) 10mm Fender Washers |
| (1) Passenger Side Bar | (8) 8mm X 25mm Hex Bolts |
| (1) Passenger Side Front Mounting Bracket (B) | (8) 8mm Lock Washers |
| (1) Passenger Side Rear Mounting Bracket (D) | (8) 8mm Flat Washers |
| (1) Driver Side Front Mounting Bracket (A) | (6) 6mm X 25MM Allen Bolts |
| (1) Driver Side Rear Mounting Bracket (C) | (6) 6mm Nylock Nuts |
| (1) 4mm Allen Tool | (12) 6mm Fender Washers |
| (4) 10mm X 35mm Hex Head Bolts | (4) 8mm X 35mm Hex bolts |
| (4) 10mm Nut Plates | (4) 8mm Fender Washer |
| (4) 10mm Lock Washers | (4) 8mm Lock Washer |



1. REMOVE CONTENTS FROM BOX. VERIFY ALL PARTS ARE PRESENT. READ INSTRUCTIONS CAREFULLY.
2.
 - a) For 2007 - 2011 models only. Insert a nut plate into the frame opening on the front driver side with the nut facing up.(Figure 1)
 - b) For 2012+ models, there are pre-threaded holes in the under side of the floor board. They are covered by a black piece of tape. (Figure 2)
3. Locate two factory holes on the front driver side pinch weld. Attach the Front Driver Side Mounting Bracket to the pinch weld using the included (2) 6-1.00mm x 25mm Allen Bolt, (2) 6mm Nylock Nut, and (4) 6mm Fender Washers (Figure 3). Do not tighten at this time.
4.
 - a) For 2007 - 2011 models - Attach the Front Driver Side Mounting Bracket to the under side panel using the included (1) 10mm x 35mm hex head bolt (1) 10mm lock washer and (1) 10mm flat washer. See Figure 3. Do not tighten at this time.
 - b) For 2012+ models - Attached the Front Driver Side Mounting Bracket to the under sidepanel using the included (1) 8mm x 35mm hex head bolt (1) 8mm lock washer and (1) 8mm flat washer. Do not tighten at this time.
5. Repeat steps 2 - 4 for rear driver side, front and rear passenger side Mounting Brackets. NOTE: You will only use (1) 6-1.00mm x 25mm Allen Bolt to attach both rear brackets to pinch weld (Figure 4).
6. Position Driver Side Bar onto brackets. Attach Side Bar to Mounting Brackets using the included (4) 8-1.25mm x 25mm Hex Head Bolt, (4) 8mm Lock Washers, and (4) 8mmFender Washers (Figure 5). Do not tighten at this time.
7. Level and adjust Side Bar and Brackets, then tighten all hardware at this time.
8. Repeat steps 6 & 7 for Driver Side Bar.
9. Do periodic inspections to the installation to make sure that all hardware is secure and tight.
10. Be sure to clean and maintain your step bars regularly. It is recommended to wax the bars regularly to protect their finish.



Figure 1

Nut Plate

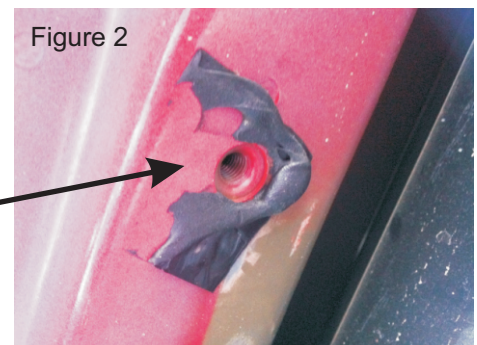


Figure 2

Pre-threaded hole on 2012 and newer Wranglers.

Front Driver Side shown

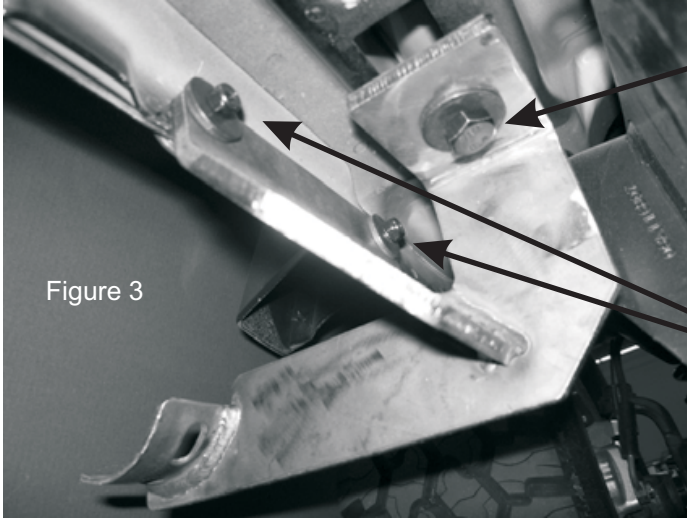


Figure 3

2007-2011 models - (1) 10mm x 35mm Hex Head Bolt, (1) 10mm Fender washer, & (1) 10mm Lock Washer.

2012+ models - (1) 8mm x 35mm, (1) 8mm Lock Washer, (1) 8mm Flat Washer.

(2) 6mm x 25mm Allen Bolts, (4) 6mm Fender washers, & (2) 6mm Lock Washers

Rear Driver Side Shown

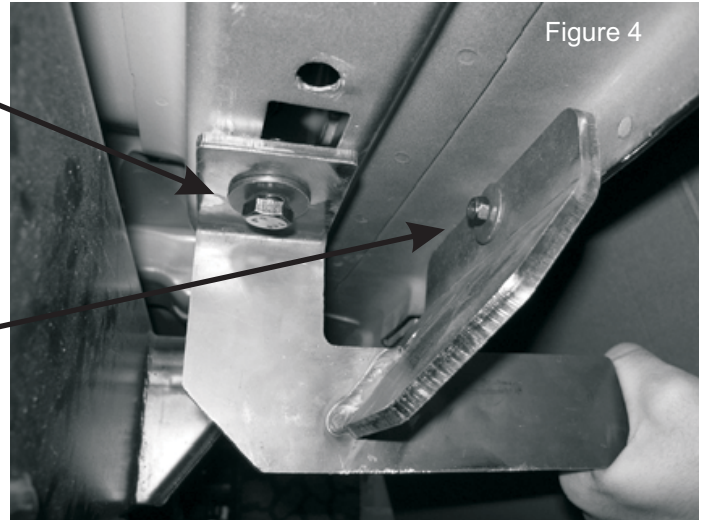


Figure 4

2007-2011 models - (1) 10mm x 35mm Hex Head Bolt, (1) 10mm Fender washer, & (1) 10mm Lock Washer.

2012+ models - (1) 8mm x 35mm, (1) 8mm Lock Washer, (1) 8mm Flat Washer.

(1) 6mm x 25mm Allen Bolts, (2) 6mm Fender washers, & (1) 6mm Lock Washers

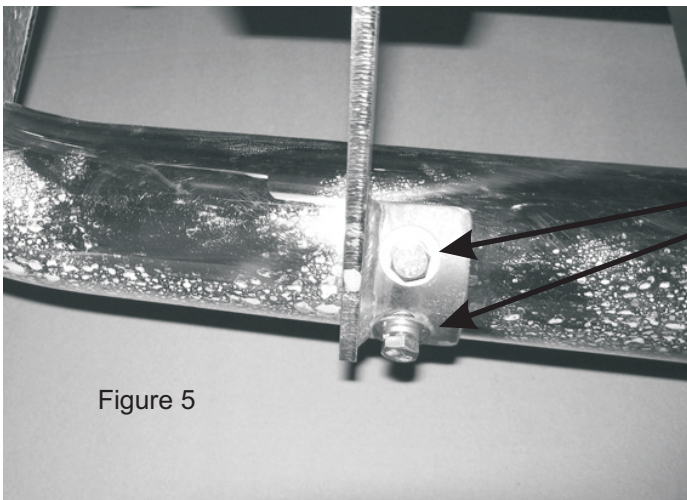


Figure 5

(2) 8mm x 25mm Hex Head Bolts, (2) 8mm Fender washers, & (2) 8mm Lock Washers at each bracket.