

INSTALLATION INSTRUCTIONS

DRAWERS #148

Please read and fill out the enclosed warranty registration card to activate your warranty.

SHIPMENT CONTENTS



Main box



Slide End (Pre-mounted)



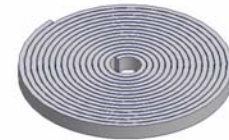
#11 Slide Cap



#17 Left Rear Bracket



#13 (2) Mounting Brackets



(2) Rubber Seal Packs

HARDWARE PACKAGE



#15.3 (4) 5/16 x 1 Allen Bolts



#15.7 (1) 5/16" x 3/4 Bolt



#15.4 (4) 5/16 x 3/4" Carriage Bolts



#15.5 (9) 1/4-20 x 1/2" Screws



#15.1 (8) 5/16 Nuts



#15.6 (9) 1/4-20 Nuts



#15.2 (13) 5/16" Washers

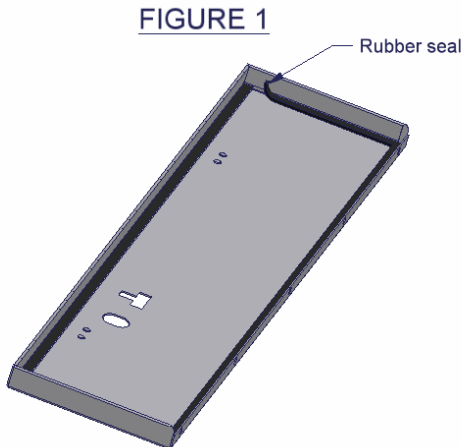
TOOLS REQUIRED

- 7/16" Wrench
- Phillips head screwdriver
- 1/2" Socket and Ratchet
- 10mm Socket
- 3/16 Allen wrench
- 1/2" Wrench
- Electric Drill and 3/8" drill bit (a 3/16" drill bit is also helpful for a pilot hole)
- Marker
- Silicone sealant (Optional)

INSTALLATION

PLEASE READ ALL SAFETY WARNINGS AND INSTRUCTIONS THOROUGHLY BEFORE STARTING INSTALL

1. Remove original floor storage cover. Save this it will reused.
2. Remove original rear door guide assembly ((2) #15.10 Bolts, 15.9 Guide, and 15.8 Spacer) located on the drivers side wall below the latch striker. Save these they will be reused. (See Figure 2)
3. Install the rubber seal on the underside of the lid then check the lock operation. (See Figure 1)



If the vehicle does not have an OEM subwoofer mounted on the right side perform these steps

4. Remove the hardware ((9) #15.5 ¼-20 x ½ screws and (9) #15.6 ¼-20 Nuts) securing the Slide End to the Main Box. (See Figure 2)
 5. Remount the Slide End in the outermost position and place the #11 Slide Cap on top. Fasten together using (14) #15.5 ¼-20 x ½ Screws and (14) #15.6 ¼-20 Nuts. Plug the open holes in the Slide assembly with (4) #15.5 ¼-20 x ½" Screws and (4) #15.6 ¼-20 Nuts. (See Figure 2)
6. Mount #17 Left Rear Bracket to the Main Box using #15.7 5/16 x ¾" Bolt and #15.2 5/16" Washer.
 7. Place the Main Box in the vehicle to mark the location for drilling the mounting holes. Position the box so the rear door shuts and the rear seat will still fold and tumble. Also, the Jack storage compartment should be accessible and the two holes in the #17 Left Rear Mounting bracket should be in line horizontally with the holes for the original door guide. These holes will not be in line vertically because the brackets are not under the box raising it up yet.
 8. Mark the spots on the floor under the (4) mounting holes in the bottom of the Main Box.

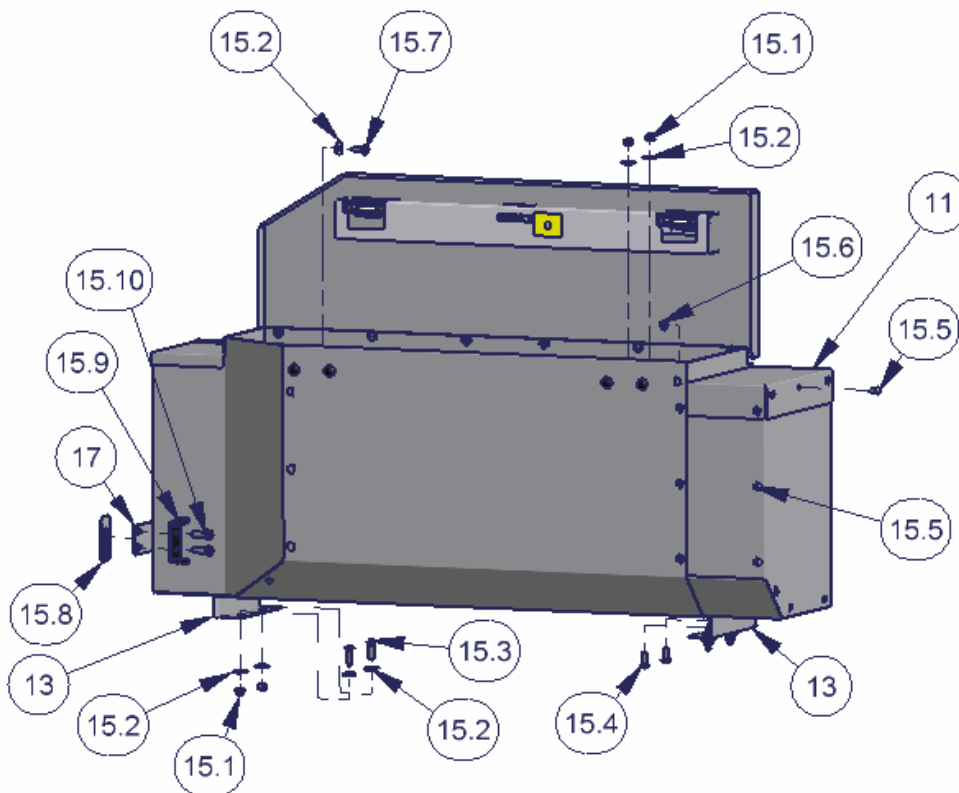
WARNING!

Make sure that there is nothing under the vehicle that will be damaged by the drill bit when drilling.

9. Drill out the (4) marked spots on the floor of the vehicle to 3/8" holes.
10. Mount both #13 Mounting Brackets to the bottom of the Main Box using (4) #15.4 5/16 x ¾ Carriage Bolts, (4) #15.1 5/16 Nuts, and (4) #15.2 5/16" Washers. Make sure they are oriented as illustrated or the original floor storage cover will not slide underneath the Main Box. (See Figure 2)
11. Place the Main Box in the vehicle and fasten it to the 3/8" holes drilled in the vehicle floor using (4) #15.3 5/16 x 1" Allen Bolts, (4) #15.1 5/16 Nuts, and (8) #15.2 5/16" Washers. If the holes do not line up loosen the hardware fastening the #13 Mounting Brackets to the Main Box and adjust as required. (See Figure 2)
12. Fasten the #17 Left Rear Bracket to the door guide holes with the original door guide assembly hardware. Be sure to place the #15.8 original spacer behind the #17 Left Rear Bracket. (See Figure 2)

13. Check the lock operation. Make sure the Jack can still be removed and replaced. Check the rear door clearance and make sure the rear seat will still fold and tumble. Loosen mounting hardware and adjust as required.
14. Replace the original floor storage cover. Do this by sliding it under the Main Box while at the same time reaching over the top of the Main Box and guiding the flaps into position. The catch mechanism cannot be used for the original floor storage cover and should be flipped down or removed (Difficult to remove). The vehicle rear door closes against the original floor storage cover to prevent it from shifting. To access the original floor storage reverse this operation.

Figure 2



Call (970) 564-1762 for Technical Support