

24 TACOMA CREW CAB BA2 STEP

Thank you for choosing Rough Country for all your vehicle needs.

Please read instructions before beginning installation. Check the kit hardware against the kit contents shown below. Be sure you have all needed parts and know where they go.

If question exist, please call us @1-800-222-7023. We will be happy to answer any questions concerning this product.

Check all fasteners for proper torque. Check to ensure for adequate clearance between all components.

Periodically check all hardware for tightness.

Kit Contents

2 - BA2 Steps

1-Dr Fr Mounting Bracket
 1-Dr Center Mounting Bracket
 1-Dr Rr Mounting Bracket

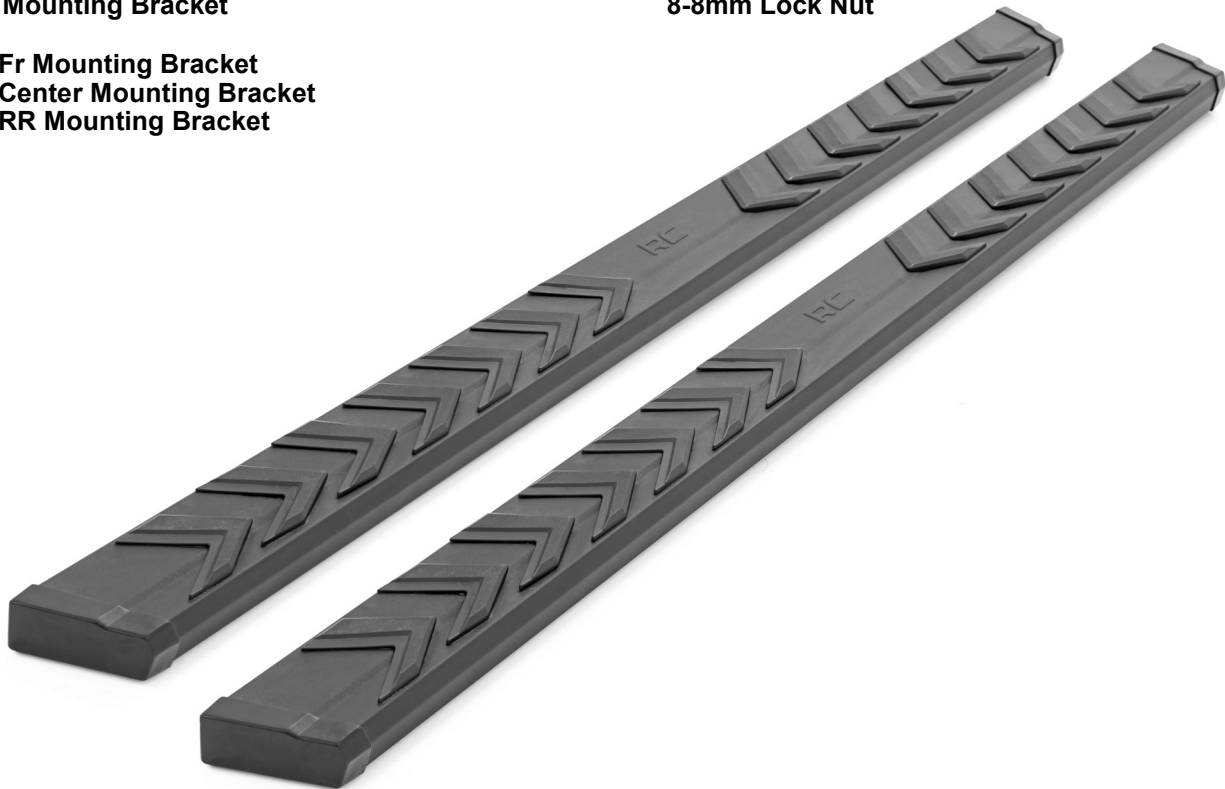
1-Pass Fr Mounting Bracket
 1-Pass Center Mounting Bracket
 1-Pass RR Mounting Bracket

Hardware Included:

6-8mm x 35mm Nut Plate
 12-8mm Lock Washer
 24-8mm Flat Washer
 12-8mm x 30mm Hex Bolt
 8-8mm Lock Nut

Tools Needed:

13mm Wrench / Socket



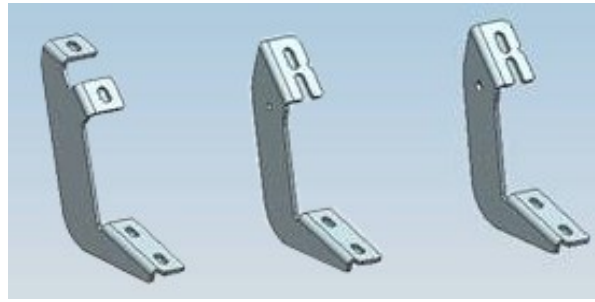
Torque Specs:

Size	Grade 5	Grade 8	Size	Class 8.8	Class 10.9
5/16"	15 ft/lbs	20ft/lbs	6MM	5ft/lbs	9ft/lbs
3/8"	30 ft/lbs	35ft/lbs	8MM	18ft/lbs	23ft/lbs
7/16"	45 ft/lbs	60ft/lbs	10MM	32ft/lbs	45ft/lbs
1/2"	65 ft/lbs	90ft/lbs	12MM	55ft/lbs	75ft/lbs
9/16"	95 ft/lbs	130ft/lbs	14MM	85ft/lbs	120ft/lbs
5/8"	135ft/lbs	175ft/lbs	16MM	130ft/lbs	165ft/lbs
3/4"	185ft/lbs	280ft/lbs	18MM	170ft/lbs	240ft/lbs



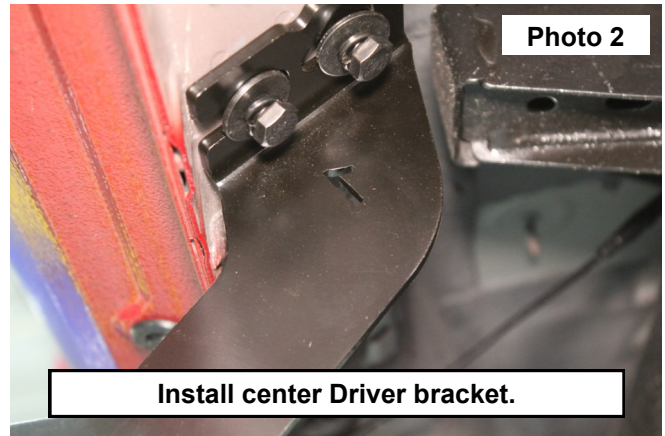
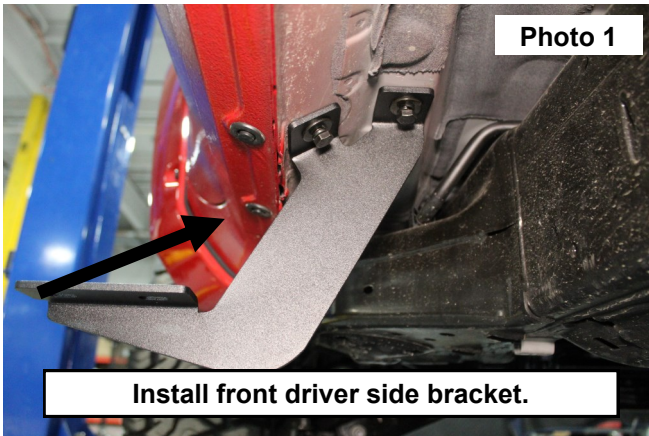
Bracket Orientation / Location

← Driver Front

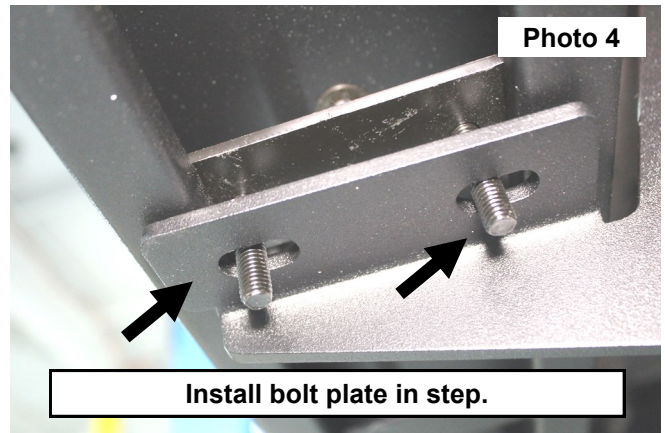
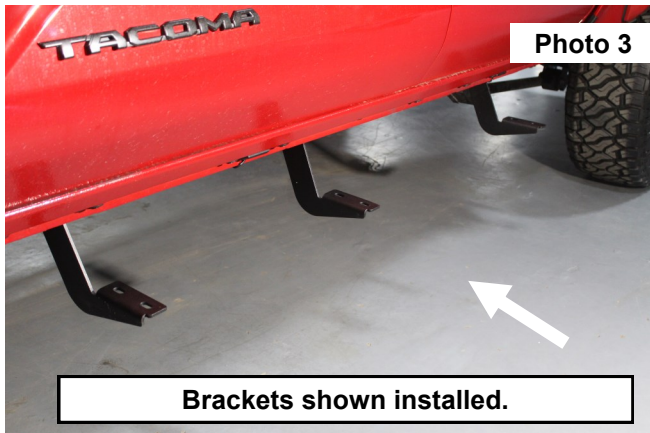


INSTALLATION INSTRUCTIONS

1. Before beginning installation, locate driver side brackets as shown in illustration above.
2. Install front driver side bracket in the factory location with supplied (2 ea.) 8mm x 30mm bolts, nuts, and flat washers using a 13mm wrench. Do not fully tighten at this time. **See Photo 1.**
3. Install center driver side bracket in the factory location with supplied 8mm x 30mm bolts, nuts, and flat washers using a 13mm wrench. Do not fully tighten at this time. **See Photo 2.**



4. Install the rear Driver side brackets into the stock holes with the supplied 8mm x 30mm hardware. **See Photo 3.**
5. Install the BA2 steps on the brackets and insert the supplied bolt plates in the step and secure with the supplied 8mm flat washers and lock nuts. Do not tighten until all hardware is installed. **See Photo 4.**
6. After all brackets and hardware has been installed, tighten all hardware using a 13mm wrench.
7. Repeat Steps 2-6 for passenger side.



By purchasing any item sold by Rough Country, LLC, the buyer expressly warrants that he/she is in compliance with all applicable, State, and Local laws and regulations regarding the purchase, ownership, and use of the item. It shall be the buyers responsibility to comply with all Federal, State and Local laws governing the sales of any items listed, illustrated or sold. The buyer expressly agrees to indemnify and hold harmless Rough Country, LLC for all claims resulting directly or indirectly from the purchase, ownership, or use of the items.

