

ROUGH COUNTRY

SUSPENSION SYSTEMS®



WARNING: This product contains a chemical known to the State of California to cause Cancer and Reproductive Harm. For more information, go to www.P65Warnings.ca.gov.

2016-UP TOYOTA TACOMA DEFENDER STYLE FLARES

PRIOR TO INSTALLATION

- A) Install the flares according to these written instructions with the hardware provided. **WARNING:** Failure to install according to these instructions will invalidate the warranty. This includes, but is not limited to, using alternative installation methods, hardware, or materials. **DO NOT USE:** Loctite, Superglue, or similar products on the hardware or the flares. *Install flares on cleaned vehicle surfaces.*
- B) **Fit:** Verify the fit of the flares to vehicle prior to installation (some filing, sanding, or cutting may be necessary to ensure proper fit).
- C) **Painting:** (Optional) if paint is desired it must be done prior to installing flares on vehicle. Clean outer surface with a good grade degreaser. **DO NOT USE LACQUER THINNER OR ENAMEL REDUCER AS A DEGREASER.** Wipe outer surface thoroughly with a tack rag prior to paint. Application of plastic adhesion promoter for ABS plastic as per your paint system manufacturer's recommendations is required. Paint flares using a high-quality enamel, or polyurethane automotive paint. If painting edge trim (not recommended), use a flex additive.
- D) **Performance:** Using larger tires may increase the area required to turn the vehicle. Some tire/rim combinations may require lowering bump stops and or installing steering stops to prevent tire from contacting flare.
- E) **Exhaust System:** Modifications may be necessary to maintain a minimum 4" clearance between flares and exhaust pipes. (Exhaust gases should not vent directly onto flares)
- F) **Metal Protection:** All exposed fasteners and bare metal should be treated with rust resistant paint **BEFORE** installing flares. Spray inner fender wells with undercoating **AFTER** flare attachments have been completed.
- G) **Decals:** Flares may interfere with existing decals on vehicle. If you wish, remove decals prior to installation of flares.
- H) **Care & Cleaning:** Fender flares are built to last; any detergent you use to wash your vehicle is sufficient to clean the flare. Do not use any harsh abrasive detergents.

TOOLS FOR EASY INSTALLATION:

- Soft Cloth or Alcohol Wipe
- 1/2" or 13mm Wrench
- Vise Grips or Pliers
- Socket Wrench
- 10mm Socket
- Pry Tool

PLEASE READ: Dirt and debris can become lodged between the fender flares and the vehicle's fenders, causing scratching and paint wear from vibration. Manufacturer is not responsible for any damage, and the installation of our fender flares is done with the buyer's understanding that this scratching and paint wear may occur.

LIMITED LIFETIME WARRANTY AGAINST ANY MANUFACTURING DEFECTS: To claim warranty you must provide Proof of Purchase.

INCLUDED IN HARDWARE KIT:

1.



SS Pocket Torx Bolt
34 pcs

2.



SS Pocket Washer
34 pcs

3.



Pocket Nylock Nut
34 pcs

4.



T-45 Torx Bit
1 pc

5.



#14 "U" Clip
4 pcs

6.



20mm Hex Screw
32 pcs

7.



Wiper Style Edge
Trim
316 inches



IF YOU PURCHASED GLOSSY BLACK FLARES (CODE "RCGB"):



Prior to beginning installation process, peel the protective liner from each plastic piece included in the flare kit – all flares and inner pieces.

NOTE: It will be difficult to remove liner once edge trim and hardware are installed.

Once liner is removed, take care not to scratch flare surfaces. If flare needs to be cleaned, wipe gently with a clean soft cloth.

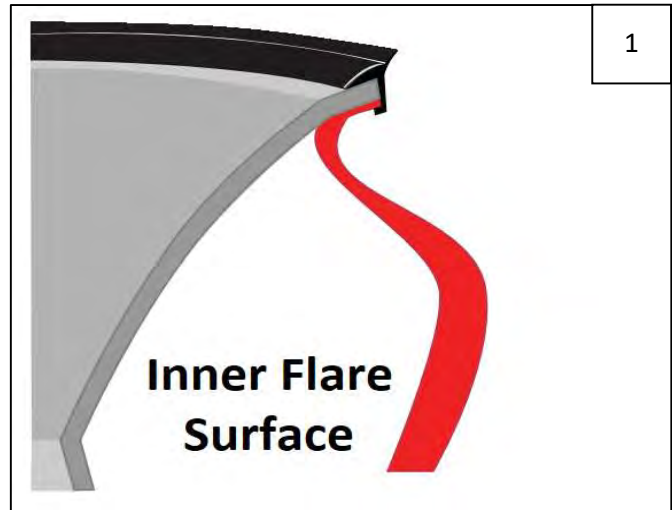


SECTION 1: EDGE TRIM INSTALLATION

Using a debris-free soft cloth or alcohol wipe, clean vehicle at areas of installation.

Peel 2-3 inches of red vinyl backing away from supplied edge trim tape. Applying the adhesive side of the edge trim to the inner side of the flare, affix the edge trim to the top edge of the flare (the portion that comes in contact with the side of the vehicle).

Press edge trim into place along the top edge of the flare in one-foot increments, pulling red vinyl backing free as you continue to work your way around the top edge of the flare. Trim edge trim flush with ends of flare.



SECTION 2: POCKET HARDWARE INSTALLATION



Install a supplied SS Pocket Washer onto each SS Pocket Torx Bolt.



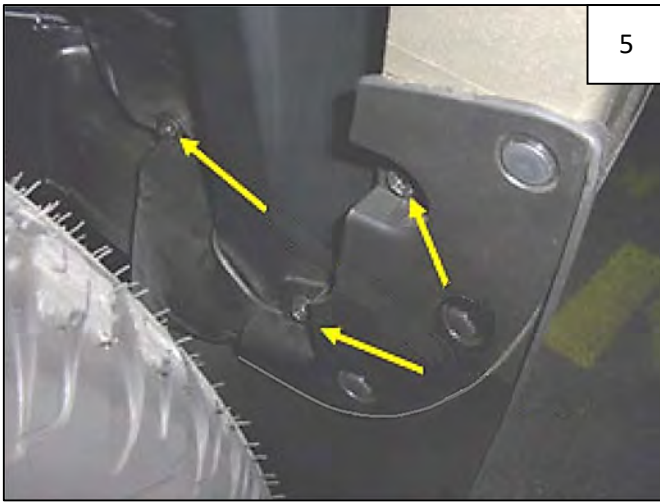
Insert each Bolt/Washer combination through pocket holes in flare, Bolt head and Washer on the outside.



Place a supplied Pocket Nylock Nut over the end of each bolt and tighten using a 1/2" wrench for the Nut and the supplied T-45 Torx Bit for the Bolt. Repeat for all pockets.



SECTION 3: FRONT FLARE INSTALLATION



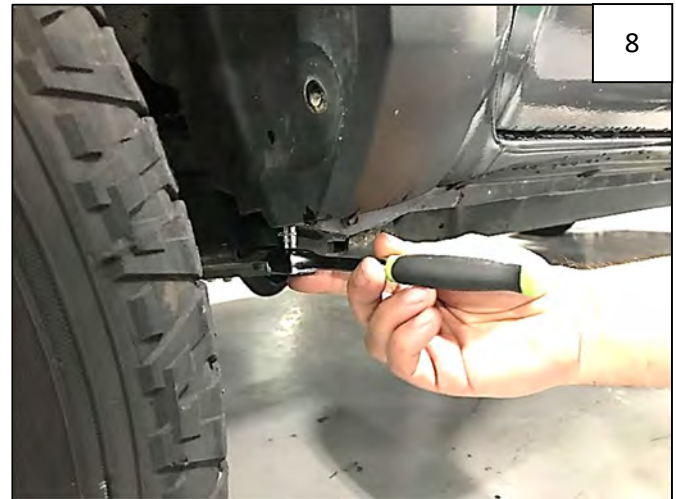
If factory mudflap is present, remove 3 factory screws indicated by arrows.



Remove 1 plastic push pin at lower front of factory flare by turning 90-degrees and pulling out.



Remove 6 factory screws from wheel well as indicated by arrows. **NOTE:** If factory flare is not present, skip to step 12.



Remove 1 factory screw from underside of factory flare at rear.



Remove factory flare by pulling firmly away from side of vehicle. Use a pry tool to protect paint if desired.



Remove 9 factory clips from fender by twisting 90-degrees and then pulling free with vise grip or pliers. 1 circled factory clip requires force, as outlined in next step. **NOTE:** It is possible to leave the factory clips in, however, rattling may occur when the vehicle is driven.



11 Use a vise grip or pliers to remove 1 factory clip as indicated by circle in Step 10, pulling with a rocking motion.



12 Attach 2 supplied #14 "U" Clips to supplied Inner Bracket as shown. Left Front Bracket is marked as "LF" and Right Front Bracket is marked as "RF"



13 Clip locations.



14 Line 3 holes in Inner Bracket with 3 uppermost holes in fender. Start 3 supplied 20mm Hex Screws through Inner Bracket and into holes in fender. Tighten screws.



15 Aligning flare on fender and pressing toward vehicle, start 2 supplied 20mm Hex Screws through flare and into clips installed on Inner Bracket.



16 Install 4 supplied 20mm Hex Screws through remaining holes in flare and into holes in fender.



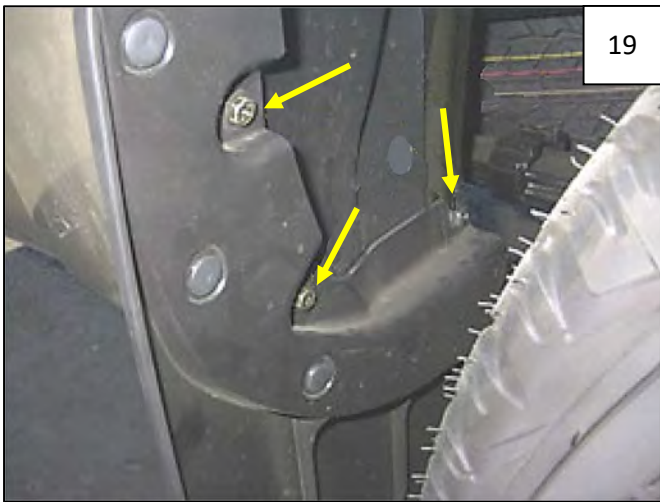


Apply pressure to flare towards vehicle body at each fastening point and tighten all fasteners.



Complete Front Flare Installation.

SECTION 4: REAR FLARE INSTALLATION



If factory mudflap is present, remove 3 factory screws indicated by arrows.



If your vehicle does not come with factory flares, the trim piece located at the rear must be removed – this part will interfere with flare installation. If flares are present, skip to Step 18.



Remove 6 factory screws from factory flare as indicated by arrows. NOTE: If no factory flare is present, skip to Step 26.



Remove 1 factory screw from underside of factory flare at rear.



23

Remove factory flare by pulling firmly away from side of vehicle. Use a pry tool to protect paint if desired.



24

Remove 10 factory clips from fender by twisting 90-degrees and then pulling free with vise grips or pliers. 1 circled factory clip requires force, as outlined in next step. **NOTE:** It is possible to leave the factory clips in, however, rattling may occur when the vehicle is driven.



25

Use a vise grip or pliers to remove 1 factory clip as indicated by circle in Step 23, pulling with a rocking motion.



26

Aligning flare on fender and pressing toward vehicle, start 7 supplied 20mm Hex Screws through flare and into fender as indicated by arrows.



27

Apply pressure to flare towards vehicle body at each fastening point and tighten all fasteners.



28

Complete Rear Flare Installation.