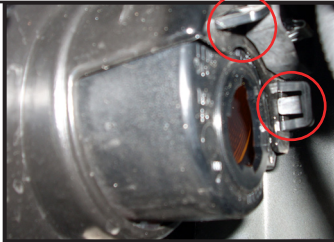


2007-08 Wrangler  
 Side Marker Light Euro-Guard  
 11231.11 - Black Powdercoated  
 11142.11 - Stainless Steel



**Step 1.** Begin by removing the bulb and socket assembly from the marker light. Twist the socket up and away from the vehicle until it loosens.



**Step 2.** With the bulb removed, locate the two housing retaining tabs (circled) and pry them outwards, releasing the housing.



**Step 3.** The housing may now be removed from the front of the vehicle.

**Step 4.** Align the 3 metal tabs with the 3 housing tabs (they are spaced uniquely and only go on one way). Slide the bottom guard tab over the housing until it clears the lens (use the lens stamping letters to determine bottom).



**Step 5.** Slide the remaining guard tabs onto the housing. The fit will be tight.



**Step 6.** With the guard seated onto the housing, squeeze the guard tabs tightly for a snug fit.



**Step 7.** Re-insert the housing into the grille. Push the housing back until it snaps into place.



**Step 8.** Reinstall the bulb/socket assembly, remembering to rotate it to secure it to the housing.



**Step 9.** Installation is now complete!

**LIMITED 90 DAY WARRANTY**  
**Applies to Rugged Ridge - Outland Automotive by Omix-Ada Inc. Products**

Rugged Ridge - Outland Automotive and OMIX - ADA (the company) warrants to the original purchaser of this product that should the product or any part thereof, under normal use and conditions, be proven defective in material or workmanship within 90 DAYS from the date of original purchase, such defect(s) will be repaired or replaced or credited at the Company's sole option.

To obtain repair or replacement within the terms of this Warranty, the product is to be delivered with proof of warranty coverage (e.g. Dated bill of sale), specification of defect(s) to the place of purchase or, with prior approval from the Company (Return Authorization Number is required), freight pre-paid to the Company address listed below.

This warranty does not apply to any product or part thereof which, in the opinion of the Company, has suffered or been damaged through alteration, improper installation, mishandling, misuse, neglect, accident or by acts of nature. THE EXTENT OF THE COMPANY'S LIABILITY UNDER THIS WARRANTY IS LIMITED TO THE REPAIR OR REPLACEMENT PROVIDED ABOVE AND, IN NO EVENT, SHALL THE COMPANY'S LIABILITY EXCEED THE PURCHASE PRICE PAID BY PURCHASER FOR THE PRODUCT.

This Warranty is in lieu of all express warranties or liabilities. ANY IMPLIED WARRANTIES, INCLUDING ANY IMPLIED WARRANTY OF MERCHANTABILITY, SHALL BE LIMITED TO THE DURATION OF THIS WRITTEN WARRANTY. ANY ACTION FOR BREACH OF ANY WARRANTY HEREUNDER INCLUDING ANY IMPLIED WARRANTY OF MERCHANTABILITY MUST BE BROUGHT WITHIN THE PERIOD OF 90 DAYS FROM DATE OF ORIGINAL PURCHASE.

IN NO CASE SHALL THE COMPANY BE LIABLE FOR ANY CONSEQUENTIAL OR INCIDENTAL DAMAGES FOR BREACH OF THIS OR ANY OTHER WARRANTY, EXPRESS OR IMPLIED, WHATSOEVER. No person or representative is authorized to assume for the Company any liability other than expressed herein in connection with the sale of this product.

Some States do not allow limitations on how long an implied warranty lasts or the exclusion or limitation of incidental or consequential damage, so the above limitations may not apply to you. This warranty gives you specific legal rights and you may also have other rights, which vary from state to state.

Omix-Ada Inc.  
 460 Horizon Dr. Suite 400  
 Suwanee, Georgia 30024

