

906-Top Hat Rack

Olympic 4x4 Products are serviced by our factory. We provide answers to installation questions. We ship parts ASAP. Try us before the hassle of returning Olympic 4x4 Products to your retailer or mail order specialist.

For assistance please call (800) 777-0878.



Top hat rack on a '00 TJ Wrangler mounted over front seats also shown with optional 131-Safari doors and 907-Mountaineer rack.



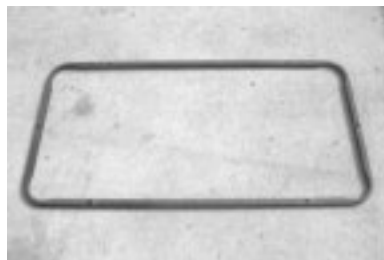
Top hat racks mounted above front and rear seats. Also show with optional 907-Mountaineer rack. Items shown are for illustration purposes only and are **not** included.

Top hat rack on a '72 CJ-5

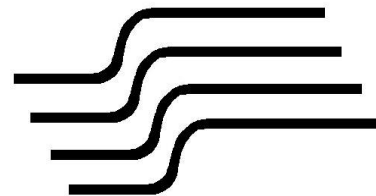
Contents photos



(1) Super structure



(1) Top rack loop



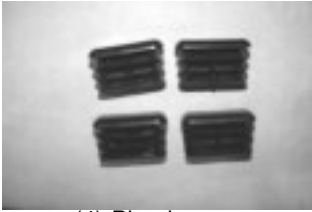
(4) Sliding support crossbeams



(1) Crossbar rack



Special clamps (May not be used for every application so you may save them if not used)



(4) Plastic caps

Parts list

8	Small spacer tubes
4	Sliding support crossbeams
1	Super structure
1	Crossbar rack
1	Top rack loop
6	Spacer tubes
4	Special clamps
4	Plastic caps

Hardware list

8	5/16" X 2 1/2" hex head bolts
4	5/16" x 3 1/4" Hex head bolts
24	5/16" Flat washers
12	5/16" NyLock nuts
6	3/8" X 5" Eyebolts
24	3/8" Flat washers
6	3/8" NyLock nuts
8	1/4" x 3/4" Allen set screws

Tools needed

3/8" or 1/2" drive ratchet wrenches

Socket wrench sizes: 1/2", 9/16"

Open end/ combination wrench sizes: 1/2", 9/16"

1/8" Allen wrench

Silicon sealer

Note:

5/16" bolts use 1/2" wrench

5/16" nuts use 1/2" wrench

3/8" bolts use 9/16" wrench

3/8" nuts use 9/16" wrench



Photo 1



Photo 2



Photo 3

Step 1. Lay the center super structure down with flat braces pointing up. Install 1/4" x 3/4" Allen head set screws loosely. Sliding support crossbeams will be slid into place at this time. Install sliding support crossbeams with the curve pointing down. Install the plastic caps in the sliding support cross beams. See photos 1,2, &3, note that the sliding support crossbeams you will receive will be curved.

Step 2. Place crossbar rack on top of super structure and align mounting holes in the square tube with the holes in the super structure.

Note: You may want to use an eyebolt to align the super structure with the crossbar rack.

Step 3. Place flat washers, then 1/2" x 3" spacer tubes on top of the holes in the crossbar rack.

Note: The eyebolt assemblies will use 4 flat washers; all flat washer will be directly against the painted parts of the rack. We recommend sealing all eyebolt assemblies with a silicon sealer.

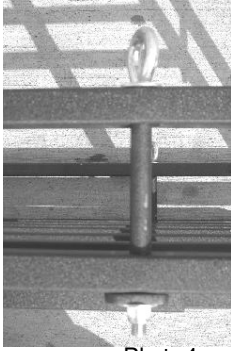


Photo 4



Photo 5

- Step 4. Place top rack loop on top of flat washers that are on top of spacer tubes and secure with $3/8$ " eyebolts, flat washer, and $3/8$ " NyLock nuts. Do this by installing a flat washer on eyebolt, slide eyebolt through top rack loop, through 3" spacer tube, through crossbar rack, through super structure, and then install a flat washer and NyLock nut. Securely tighten bolts at this time. Place completed rack to the side. Basically you will use 4 flat washers for each eyebolt assembly. See photos 4 & 5. Photo 4 shows the order and how the rack is secured together.



Photo 6

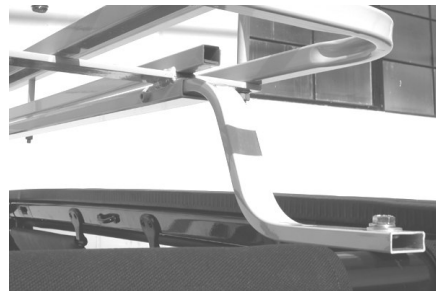


Photo 7

- Step 5. On 1997-present model Wranglers, secure top hat rack by using $5/16$ " X $3 1/4$ " hex head bolts. The bolts will replace the existing bolts that currently secure the plastic door mount that is bolted to the top of the roll bar. See photo 6,7. On all other model Wranglers and CJ's, use the special clamps that fit around the tubular roll bar and fasten with $5/16$ " X $2 1/2$ " hex head bolts, flat washers, small spacer tubes, and $5/16$ " NyLock nuts. Install the small spacer tubes between the special clamps and the sliding support crossbeams. You can also use the special clamps to secure the top hat rack above the rear seat on 1997-present Wranglers and all other model Wranglers and CJ's.
- Step 6. Securely tighten all nuts and bolts at this time. After 500 miles or first off road trip, re-tighten all nuts and bolts.