

TERAFLEX

INSTALLATION GUIDE

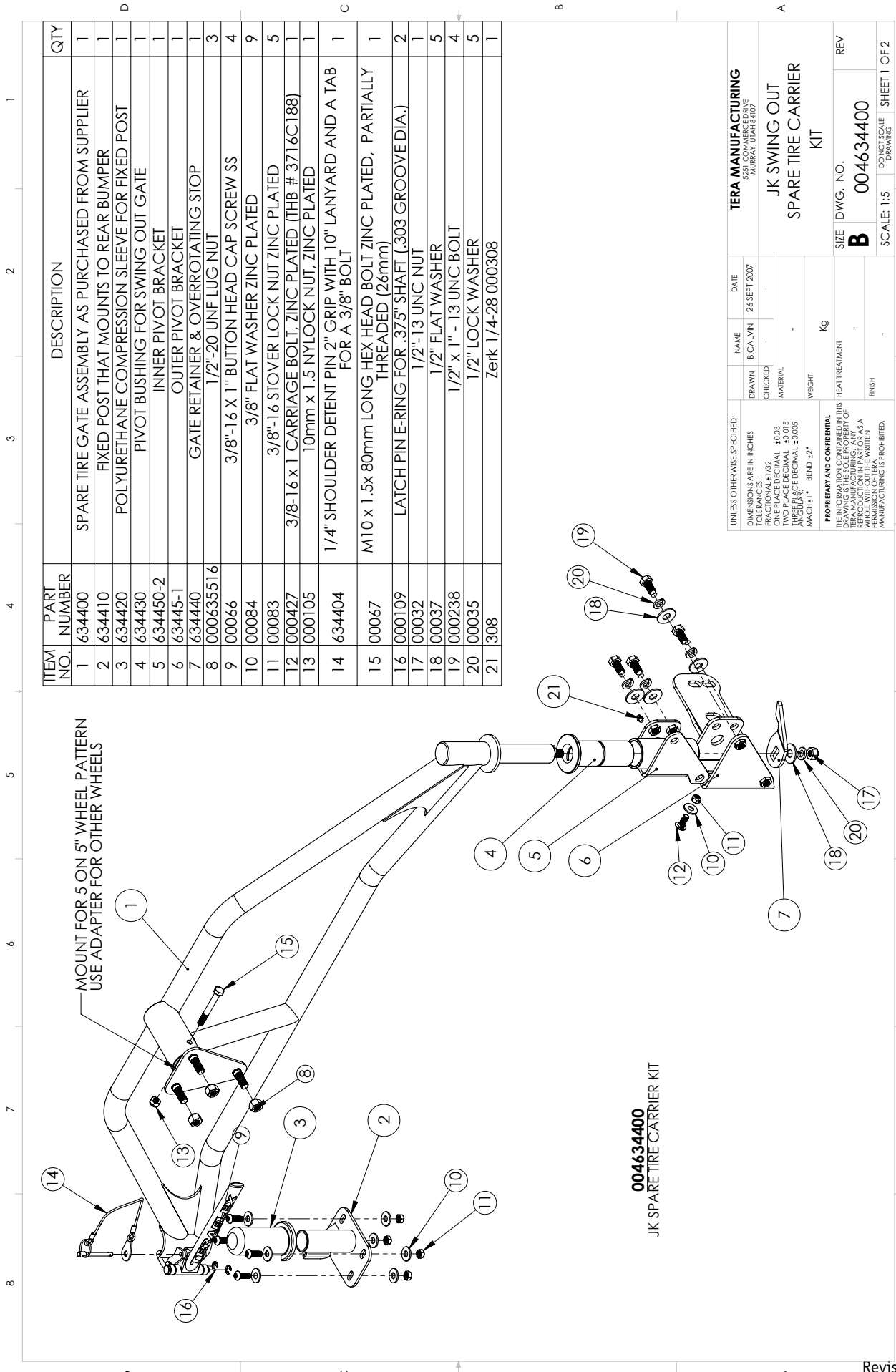
Installation Guide for the JK RockGuard Spare Tire Carrier Part #4634400



The JK RockGuard Spare Tire Carrier includes a multi-plane adjustable mounting bracket that must be installed inside the rear bumper before the bumper is installed on the JK. The TeraFlex Tire Carrier will only work with a TeraFlex RockGuard rear bumper p/n 4654100.

Tera Manufacturing, Inc.
5251 South Commerce Dr.
Murray, Utah 84107
Phone/801.288.2585
Fax/801.713.2313
www.teraflex.biz





ITEM NO.	PART NUMBER	DESCRIPTION	QTY
1	634400	SPARE TIRE GATE ASSEMBLY AS PURCHASED FROM SUPPLIER	1
2	634410	FIXED POST THAT MOUNTS TO REAR BUMPER	1
3	634420	POLYURETHANE COMPRESSION SLEEVE FOR FIXED POST	1
4	634430	PIVOT BUSHING FOR SWING-OUT GATE	1
5	634450-2	INNER PIVOT BRACKET	1
6	63445-1	OUTER PIVOT BRACKET	1
7	634440	GATE RETAINER & OVERROTATING STOP	1
8	000635516	1/2"-20 UNF LUG NUT	3
9	00066	3/8"-16 X 1" BUTTON HEAD CAP SCREW SS	4
10	00084	3/8" FLAT WASHER ZINC PLATED	9
11	00083	3/8"-16 STOVER LOCK NUT ZINC PLATED	5
12	000427	3/8-16 x 1 CARRIAGE BOLT, ZINC PLATED (IHB # 3716C188)	1
13	000105	10mm x 1.5 NYLOCK NUT, ZINC PLATED	1
14	634404	1/4" SHOULDER DETENT PIN 2" GRIP WITH 10" LANYARD AND A TAB FOR A 3/8" BOLT	1
15	00067	M10 x 1.5x 80mm LONG HEX HEAD BOLT ZINC PLATED, PARTIALLY THREADED (26mm)	1
16	000109	LATCH PIN E-RING FOR .375" SHAFT (.303 GROOVE DIA.)	2
17	00032	1/2"-13 UNC NUT	1
18	00037	1/2" FLAT WASHER	5
19	000238	1/2" x 1" - 13 UNC BOLT	4
20	00035	1/2" LOCK WASHER	5
21	308	Zeik 1/4-28 000308	1

004634400
JK SPARE TIRE CARRIER KIT

DRAWN		NAME	DATE
B.CALVIN		B.CALVIN	26 SEPT 2007
CHECKED		MATERIAL	
		Kg	
WEIGHT		HEAT TREATMENT	
FINISH		SCALE: 1:5	
		DRAWING	

UNLESS OTHERWISE SPECIFIED:
DIMENSIONS ARE IN INCHES
TOLERANCES - FRACTIONS: 1/32
DECIMALS: 0.005
ONE PLACE DECIMAL: ±0.03
TWO PLACE DECIMAL: ±0.015
THREE PLACE DECIMAL: ±0.005
MACH: 1* BEND ±2*

PROPRIETARY AND CONFIDENTIAL
THIS DRAWING IS THE SOLE PROPERTY OF TERA MANUFACTURING. ANY REPRODUCTION OR TRANSMISSION OF ANY PART OF THIS DRAWING WITHOUT THE WRITTEN PERMISSION OF TERA MANUFACTURING IS PROHIBITED.

TERA MANUFACTURING
MURRAY, UTAH 8407

JK SWING OUT
SPARE TIRE CARRIER
KIT

SIZE DWG. NO. **B** 004634400
REV

SCALE: 1:5 SHEET 1 OF 2

Assembly and Installation:

Start with the brackets for the pivot end of the tire carrier. Assemble them inside the bumper and leave all the bolts just finger tight for easy adjustment and alignment. Be sure to use the carriage head bolt for this step. You won't be able to put a wrench on this bolt head once the bumper is installed.



Next assemble the fixed post end, again leaving the bolts loose until the final adjustment is made. Install the polyurethane cover sleeve on the fixed post.



At this point you can set the swing out tire carrier in place on the bumper and then lift the bumper/tire carrier assembly into place. Make sure you get plenty of help as this is a heavy assembly. When you install the bumper leave the bolts just finger tight until final adjustments are made.

The most critical adjustment is the alignment of the latch mechanism. Before installing the spare tire, make sure the latch assembly is perfectly aligned with the fixed post. You can move the pivot end brackets and move the fixed end post until the latch opens and closes easily and the tire carrier is parallel to the top of the bumper.



The top rail of the tire carrier should line up with and slightly compress the urethane bump stops on the tailgate when the latch is closed.



The swing out carrier should be centered on the fixed post. The first photo shows the carrier set too high and the second photo shows correct alignment of the swing out carrier and the fixed post and latch mechanism. ***Do not force the latch closed! Once the alignment is correct the latch will open and close easily.***



The final step is to install the pivot bushing grease zerk and then tighten all the mounting bolts and bracket bolts. Tighten the bolts in a criss-cross pattern so the pivot and fixed brackets don't move out of place. Check the proper movement and alignment of the carrier several times as you finalize the installation.



Put the rotation stop on the bottom of the pivot post as shown with the supplied flat washer, lock washer and nut. This will keep the tire carrier from swinging open too far.



The tire mount is set for 5 on 5 lug pattern for the stock JK wheels. Wheel adapters are available from TeraFlex for other wheel lug patterns.

Adjust the wheel mount so the tire pushes gently against the tubes of the tire carrier as you tighten the spare tire lug nuts. This will minimize movement of the spare wheel when driving.

The tire carrier has been tested up to a 37 inch tire and wheel combination.

Torque Specifications:

3/4 inch main bumper mount - 120 ft lbs

12 mm bumper mount - 40 ft lbs

3/8 bolts - 35-40 ft lbs