



OFF-THE-TURNBUCKLE HOOD LATCHES BLACK OUT SERIES

Installation Instructions
JEEP WRANGLER JK / JL / JEEP GLADIATOR JT
99-1091

QTY	Parts List
1	Off-theTurnbuckle Hood Latches
1	Installation Hardware Bag
1	Installation Instructions

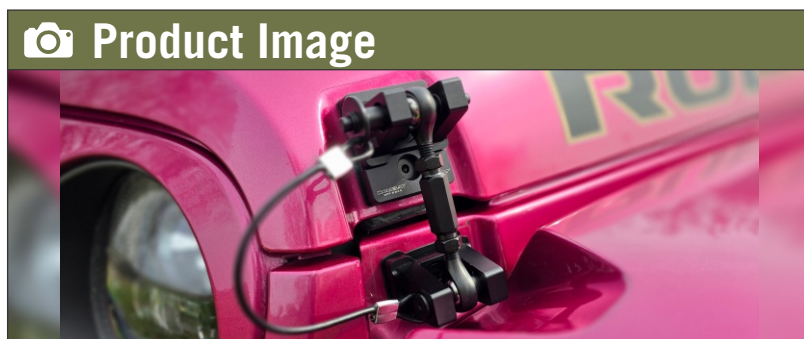
Difficulty Level: Easy

Product Support

1-888-531-7183

info@combat-offroad.com

Tool List	
13mm wrenches	10 + 13mm sockets
4mm Hex Key	5mm Hex Key
6mm Hex Key	Ratchet
Green Painters Tape	



Notes and Maintenance



IMPORTANT NOTE Damage caused to finish by tools during installation is not covered by warranty. Clean your tools first. Apply green painters tape on the contact areas of the tools and the black hardware including the turnbuckle, jam nuts and Allen head bolts. Take care not to mark these components.

Before you begin installation, read all instructions thoroughly.

Proper tools will improve the quality of installation and reduce the time required.

Periodic inspections should be performed to ensure all mounting hardware remains tight.

Mild automotive detergent may be used to clean the product. Do not use dish detergent, abrasive cleaners, abrasive pads, wire brushes or other similar products that may damage the finish.

For additional information on ongoing maintenance please see:

<https://www.youtube.com/watch?v=aMOV679txyU>

Feedback

COMBAT OFF ROAD industry leading warranty. Register your purchase by visiting:
www.combat-offroad.com/registration

Be social, tag us on your install or out on the trail enjoying, use: #combat4x4 and #combatooffroad



OFF-THE-TURNBUCKLE HOOD LATCHES

Installation Instructions

JEEP WRANGLER JK / JL
JEEP GLADIATOR JT

Step 1

Open hood of the vehicle. Ensure that you have it secure for working so it does not fall closed on you or your team mate.

Using the 10mm socket and ratchet, remove the factory latch upper assembly from the hood.

Repeat for the opposite side.

Step 2

Align your new upper mounting brackets with the base plate and install with the supplied M6 bolts, washer and nuts. Using a 4mm hex key and 10mm socket, tighten hardware once aligned with hood features (body lines).

Repeat for the opposite side.

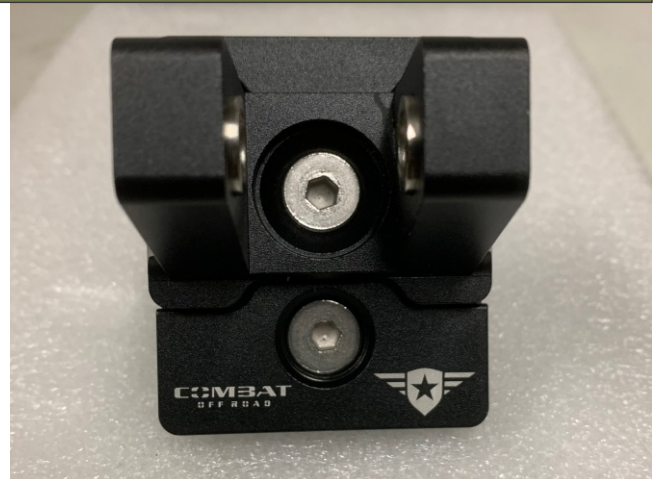


Fig. Upper Mount and Base Plate Alignment

Step 3

Using the 13mm socket or wrench remove the lower mounting hardware from the factory lower hood latch on both sides.



OFF-THE-TURNBUCKLE HOOD LATCHES

Installation Instructions

JEEP WRANGLER JK / JL
JEEP GLADIATOR JT

Step 4

In order to mount the new lower bracket, the assembly will need to be taken apart slightly. Using a 6mm hex key, remove the retaining bolt and spacer. This is required to access the mounting hole to attach the bracket to the vehicle.

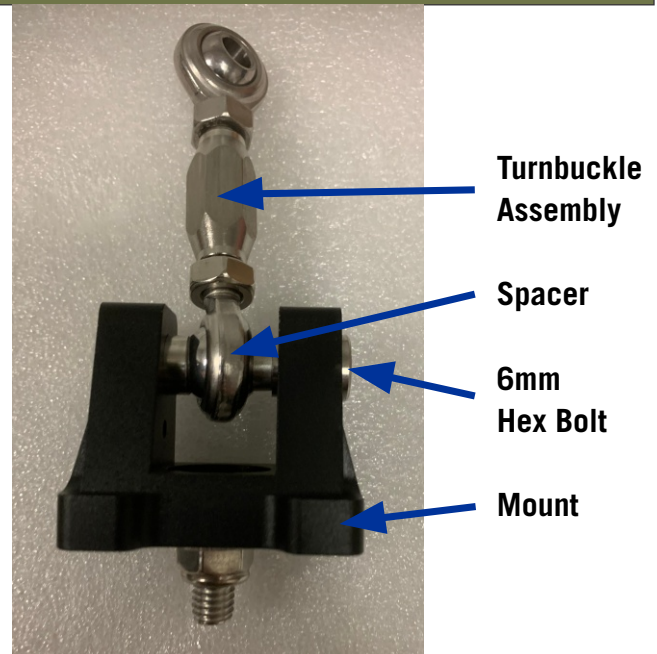


Fig. Lower Mount

Step 5

Align the lower mount with body using the M8 bolt, washer and nut. Using a 5mm hex key and 13mm socket, tighten hardware.

NOTE: The retaining lanyard can go on the front or rear side on the JK model. On the JL/JT model it must be positioned forward.

Reinstall the turnbuckle, sleeves and hardware into the lower mount using a 6mm hex key. Tighten hardware.

Repeat for the opposite side.

If you have a Jeep JL or JT with the stock Rubicon/Mojave fenders please watch for additional installation information:
<https://www.youtube.com/watch?v=nHs9inGDVRO>

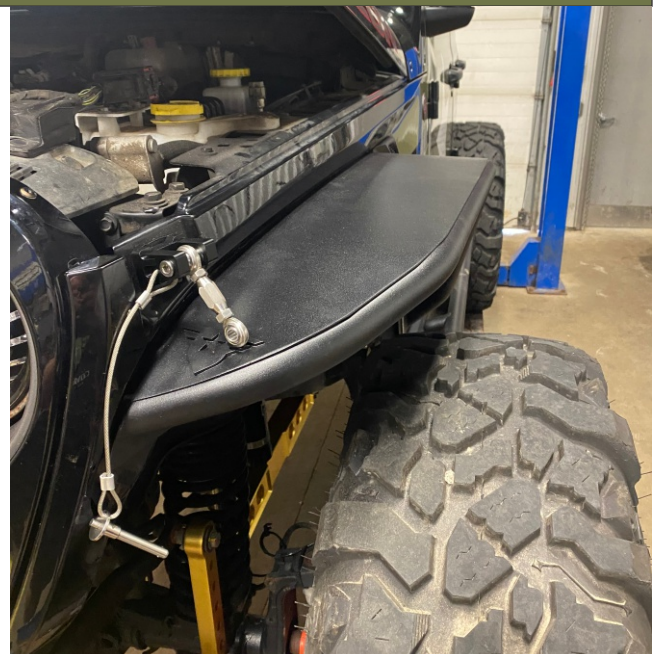


Fig. Lower Mount on Vehicle



OFF-THE-TURNBUCKLE HOOD LATCHES

Installation Instructions

JEEP WRANGLER JK / JL
JEEP GLADIATOR JT

Step 6

Close the hood and prepare for final adjustments of the new latches.

NOTE: Ensure the turnbuckles are laid out on the fenders before trying to close the hood or damage to the hood will result.

Step 7

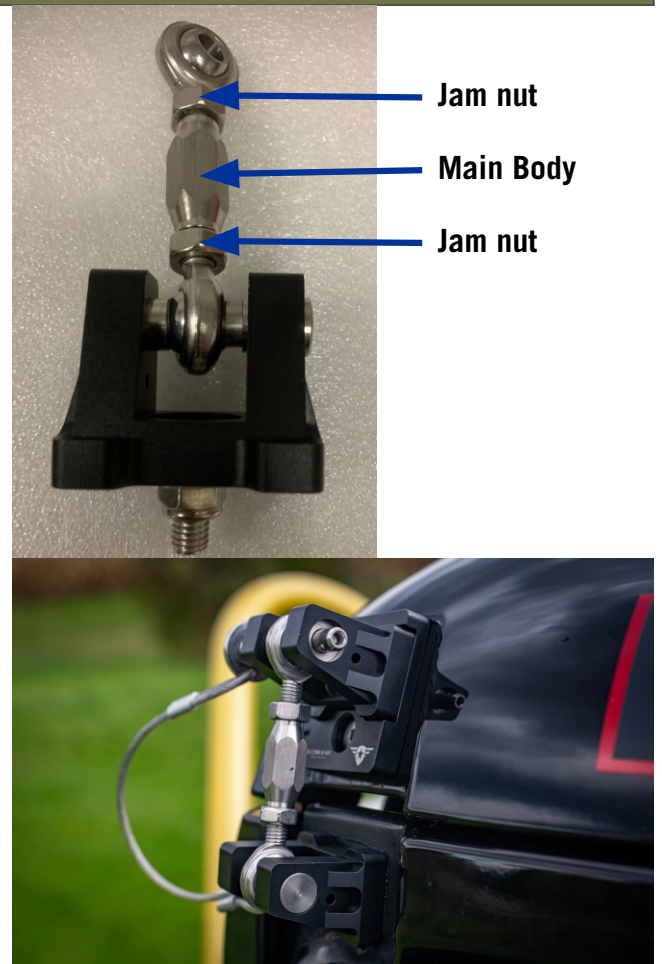
Adjustment Phase:

Adjust turnbuckle length by rotating the main body until the quick release pin can be placed into the upper mount thru the rod end.

Snug the hood up to the desired gap between the hood and fender by rotating the turnbuckle body.

Tighten the jam nuts on each end to the main body using the 13mm wrenches.
NOTE: The main body uses Left Hand and Right Hand threads. Ensure both are tight.

Test out the adjustment by removing and reinstalling the quick release pins from the upper mounts. Pressure down on the hood may be required depending on application.



Step 8 - Enjoy!



WARNING: Cancer
and Reproductive Harm -
www.P65Warnings.ca.gov