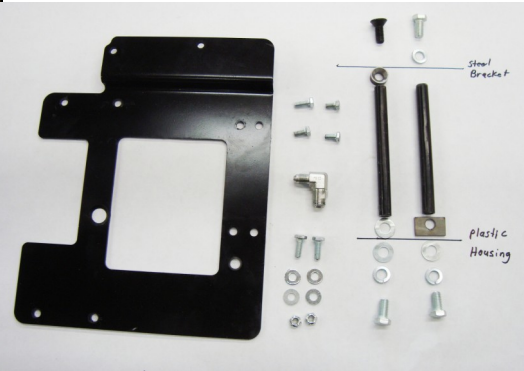


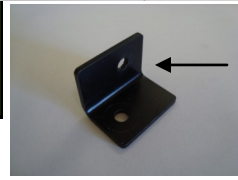


MOUNTAIN OFF ROAD ENTERPRISES, LLC.  
 P.O. BOX 690 DELTA COLORADO 81416  
 (877)JEEP-A2Z or (877)533-7229  
 888-698-5337 FAX  
 E-mail: info@mountainoffroad.com  
 www.mountainoffroad.com

**INSTALLATION INSTRUCTIONS for ARB07 Compressor Bracket Jeep JK 2007– Current**



- HARDWARE KIT:**
- 1– Steel Bracket
  - 2– 1/2" dia. X 5-3/8" long tube
  - 1– 1/4"xNPT to 4AN 90 fitting
  - 1-5/16" thick cone spacer
  - 1-3/8"x3/4 Flat Hd. Cap Screw
  - 3-3/8" x 3/4" bolt
  - 3-3/8" Lock Washers
  - 3-3/8" Flat Washers
  - 1-Rectangle Flat Washers
  - 4-1/4"x 3/4" Bolt
  - 4-1/4" Top Lock
  - 4-1/4" Flat Washers
  - 4– 6mm x 16mm long bolt
  - 4– 6mm lock washers
  - 1– Angle Bracket
  - 1-Split Tube
  - 2– Zip Ties
  - 1-Stainless Steel Angle
  - 1-Stainless Steel Tab



Manifold angle bracket for 2007-2011 Jeep JK



Stainless Steel Clips for 2015 models and newer. Used to move air conditioner hose towards the middle

Please read and understand all instructions before beginning the installation of the ARB Compressor Bracket for Jeep JK. Please read the terms and policies on the back of these instructions.

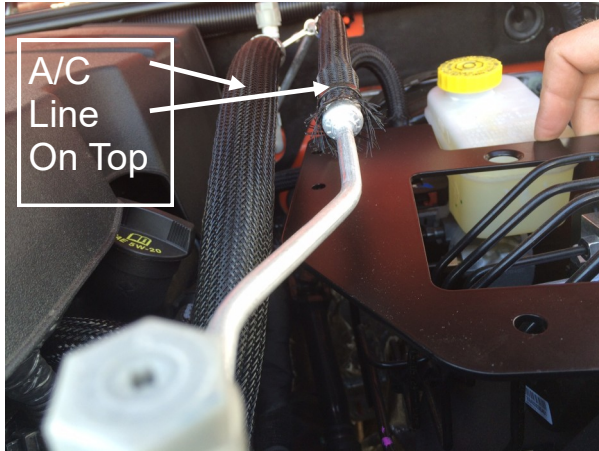
The **ARB07** Air Compressor Bracket is designed to fit the following Jeep® vehicles: 2007-current JK Wranglers and will accommodate the SPOD box.

**STEP 1:** Loosen the 2 each 10mm bolts holding in the plastic housing to the fender. This is to allow you to have better access to tighten nuts when final assembly will occur (Photo 1 and Photo 2)

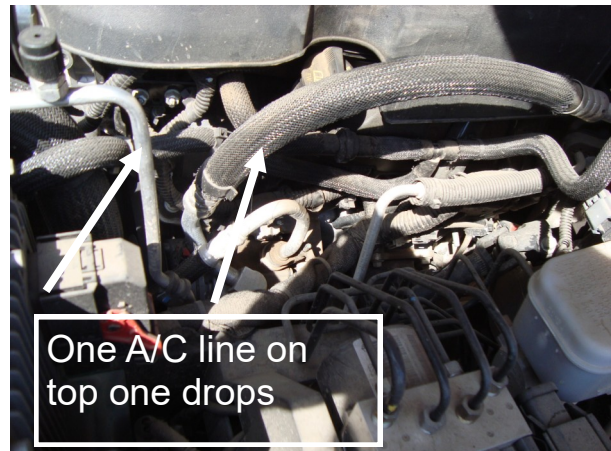


**STEP 1A: If you have a 2015 and up model PLEASE READ**

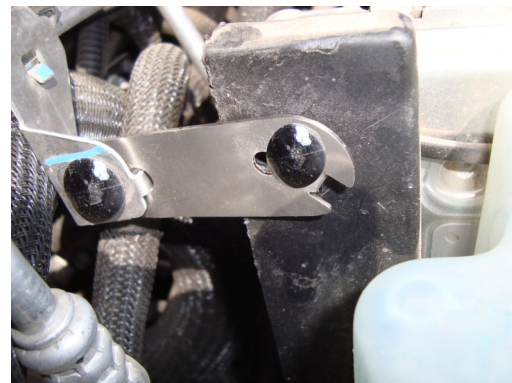
In mid 2015 Jeep made a design and routing change on their air conditioning line. In earlier models, one of the two lines drops down and goes below the brake booster. In newer models both A/C lines stay up on top, and without the following re-locating of the A/C line, they will interfere with the ARB compressor. See photos to see which A/C line you have.



Newer 2015 and up.. Both A/C lines running on top.



Older 2015 down to 2012. One A/C line runs on top the other line drop down and back to firewall



Move the smaller A/C line to the inside by removing push in keeper (re-use). Bend small tab on bracket down. Insert bent tab into original hole and push in new keeper.



Factory Firewall location of A/C mount

Use angle bracket to move the A/C line to the inside toward the motor



Modified location of Firewall bracket

**STEP 2:** Assemble the 2 each 1/2" tubes with tapped threads in the in side of the tube. For the tube closest to the fire wall use the Allen head cap screw and under the plate bracket add the counter sunk thick washer next then the tube. (Photo 3 A tube) On the tube closest to the grill just use the 3/8 x 3/4" long bolt. (Photo 3 B tube)

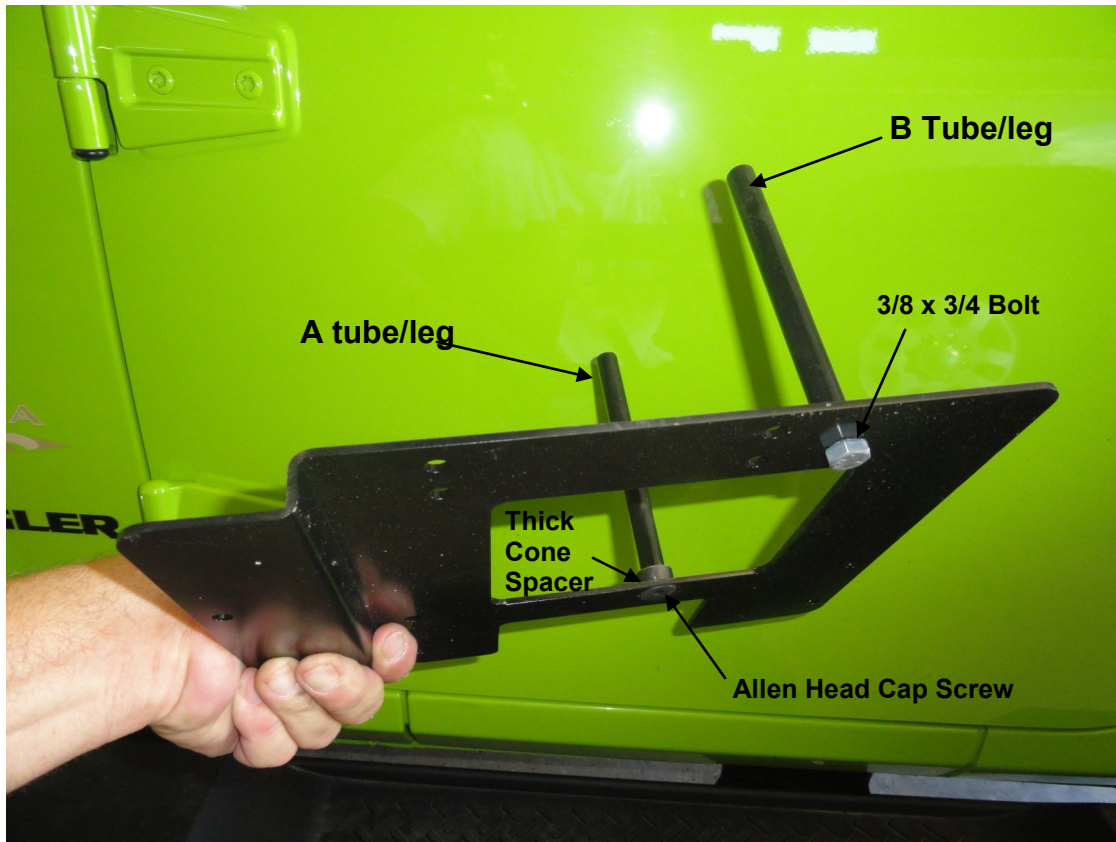


Photo 3

**Step 3:** Place Assembled bracket over Power steering and Power Brake Manifold. Insert the two 1/4 x 3/4" bolts into the top of the steel bracket and thru the top of the plastic housing. You have two options to mark the center of the 1/2" tube legs. Option 1– Use a silver sharpie and trace on the plastic housing, around the two 1/2" diameter tube / legs. Option 2– With the bracket in place and the 1/4 x 3/4" bolts into the top of the steel bracket and thru the top of the plastic housing, tighten nuts. Gently remove the two bolts holding the tubes in place and use a bright colored spray can of paint and shoot a spot of paint down the hole of the tube to mark the center of the 1/2" tube. Wipe off excess paint on the top of the mounting bracket. See (Photo4, 5, 6)

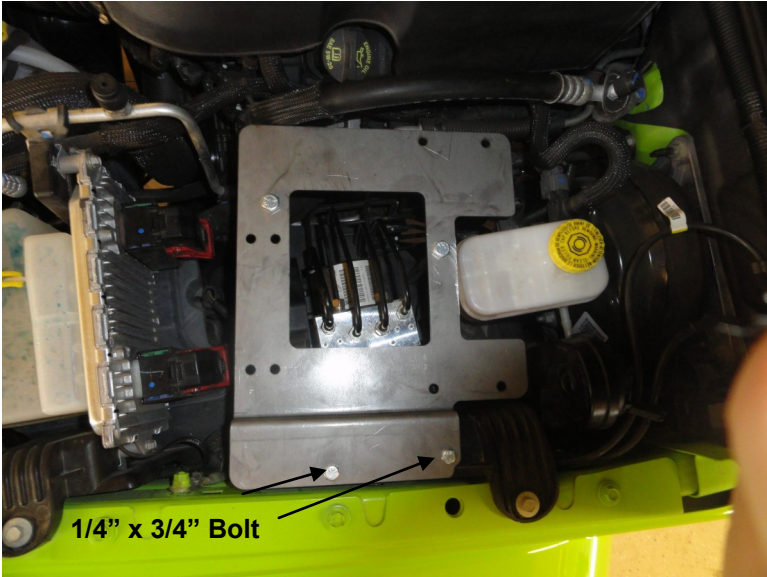


Photo 4

Photo 5 Marking Option 1



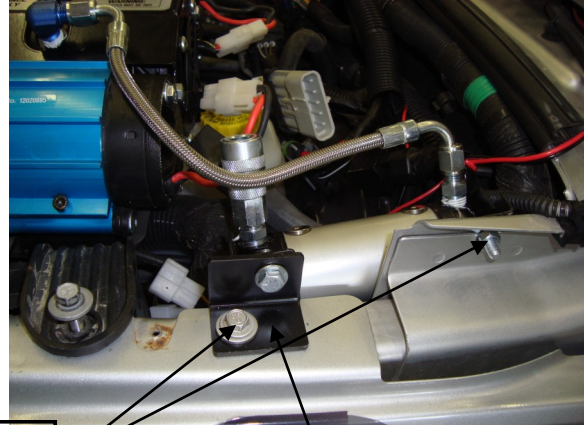
Photo 6 Marking option 2

**Step 4:** With you holes marked, drill two the two holes using a 13/32 drill bit. Place the rectangle washer on the plastic housing, over the hole, nearest the radiator (leg B). Place the regular flat washer, on the plastic housing, over the hole nearest the firewall. (leg A). These are to re-enforce the plastic when the legs rest on the plastic housingPhoto 7



Photo 7

Factory Bolt hole. Use 1/4x3/4 bolt & nut



Supplied Angle

Photo 8a

**Step 5:** Making sure all your bolts attaching your legs to your steel bracket are tight then assemble the ARB Air Compressor. If you are NOT mounting a SPOD this is the location for your manifold. (Photo 8). If you ARE mounting a SPOD to 2007-2011 model, use supplied angle and bolt through factory hole locations to mount the manifold (photo 8a). If you have 2012 and newer JK, mount the manifold on the firewall.

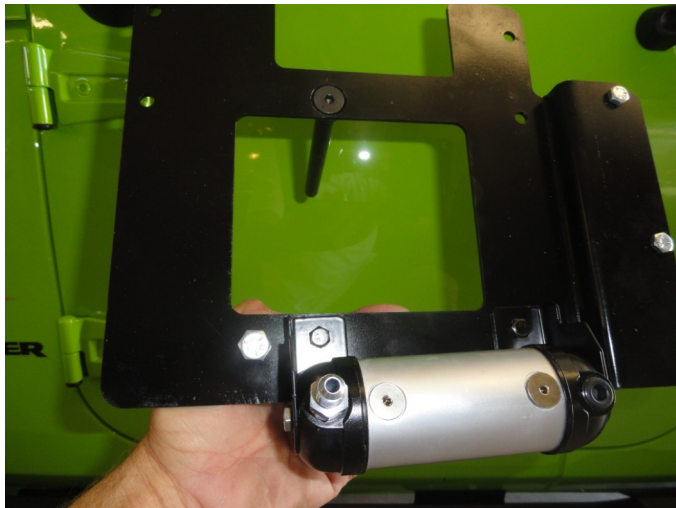


Photo 8

In some instances you may want to zip tie the air condition hose back to the oil dip stick tube incase the hose rubs the compressor.



Photo 9

**Step 7:** Once the ARB Air Compressor and Manifold is bolted tight to the steel bracket set the assembly into place where the two legs will rest on top of the two flat washers and over the holes. Under your wheel well skirt remove the bolt using a 10mm socket and pull the skirt away to expose the hole you drilled Photo 10. Insert the 3/8 x 3/4" bolt with flat washer and lock washer into the bottom of the firewall leg. Photo 11 and 12



Photo 10



Photo 11

**Step 8:** With the air compressor, manifold and bracket tight and in place insert the 45 degree AN fitting into the top of the ARB air compressor. Attach and tighten the steel braided line to the compressor and manifold. You are done !!!!

**Step 9:** The AC coolant line may come close to the cooling fins of the ARB compressor and rub a hole in the Freon line. Wrap the split plastic tube around the Freon line and zip tie tight for protection. Photo 13

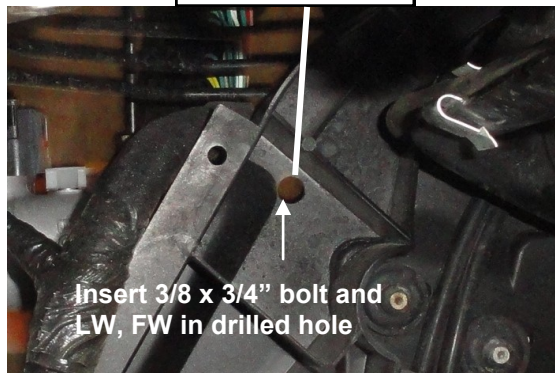


Photo 12

Photo 13

