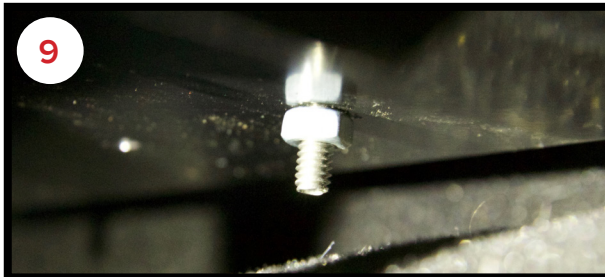
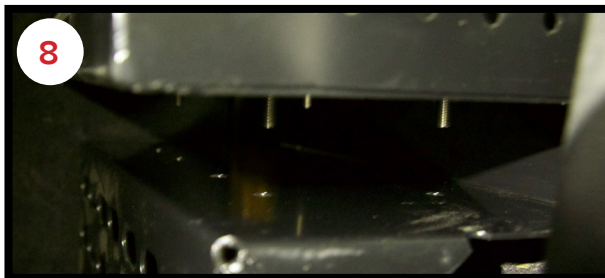
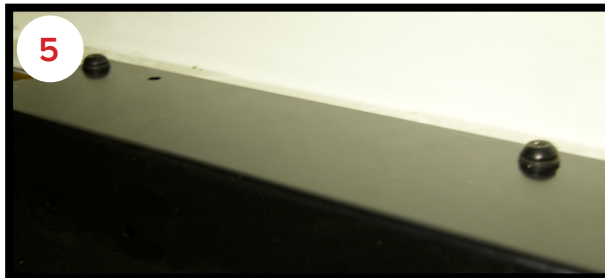
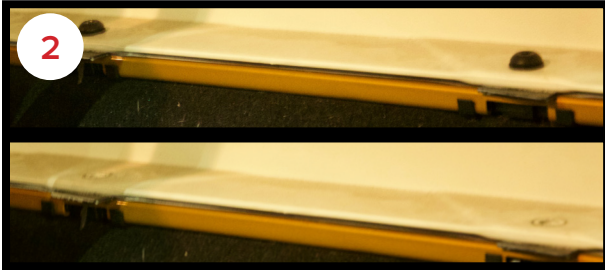


# JEEP AMMO CAN CARRIER MOUNT INSTALLATION INSTRUCTIONS



1. The MORryde Ammo Can Carrier can be installed on the driver or passenger side of the Jeep. Decide which side of the Jeep you prefer to have the carrier installed on.
2. **If your Jeep has a hardtop:** Remove the (2) factory Torx head bolts above the rear wheel well on the desired side of the Jeep.  
**If your Jeep has a soft top:** Your Jeep may not be equipped with hardtop retainer nuts under the tub rail. If your Jeep has the retainer nuts, these accept 8mm x 25mm bolts, so you'll need to purchase two of those. If your Jeep does not have the hardtop retainer nuts, they can be purchased through a Jeep dealer or through many online outlets. The factory part number is 55397093AC. You will also need (2) 8mm x 25mm bolts. Alternately, if your Jeep does not have the hardtop retainer nuts, you can use 5/16" x 1" bolts and nuts to secure the Ammo Can Carrier.
3. Install the (2) swivel feet into the bottom of the Ammo Can Carrier Mount.
4. **If your Jeep has a hardtop:** Align holes on Ammo Can Mount with the holes on the Jeep where the (2) Torx head bolts were removed in Step 2.  
**If your Jeep has a soft top:** Position the Ammo Can Mount to determine which holes in the top of the Jeep tub are to be used. Ensure that the correct holes are aligned and that the mount is not rubbing against the rear seat.
5. **If your Jeep has a hardtop:** Reinstall the (2) Torx head bolts to secure the Ammo Can Carrier Mount to the Jeep.  
**If your Jeep has a soft top:** Depending on which bolt option you will be using as described in Step 2, use that hardware to secure the mount to the Jeep.
6. Adjust the swivel feet out until the mount is properly supported. When the feet are adjusted, the Ammo Can Carrier Mount should not bounce during travel.
7. Tighten the locking nut on the swivel foot against the bottom of the carrier to lock the feet in position.
8. Align holes in the bottom of the Ammo Can Tray with the set of holes on the Ammo Can Carrier Mount nearest to the rear of the Jeep.
9. The Ammo Can Tray will be secured to the Mount using (2) of the supplied 5/16" flathead bolts in the bottom of the tray and (2) of the supplied 5/16" flathead bolts in the back of the tray in the holes indicated on the parts diagram (located on backside of this paper).
10. Insert rubber tread into Ammo Can Carrier.

# JEEP AMMO CAN CARRIER MOUNT INSTALLATION INSTRUCTIONS

These (4) holes match the bolt pattern of a standard Rotopax® Mount.

These (4) holes match the bolt pattern in the back of a standard ("Blitz" or Military) Jerry Can Tray.

These (4) holes match the bolt pattern in the bottom of a standard ("Blitz" or Military) Jerry Can Tray

